



CITY OF
**PALO
ALTO**

Baylands Comprehensive Conservation Plan (BCCP)

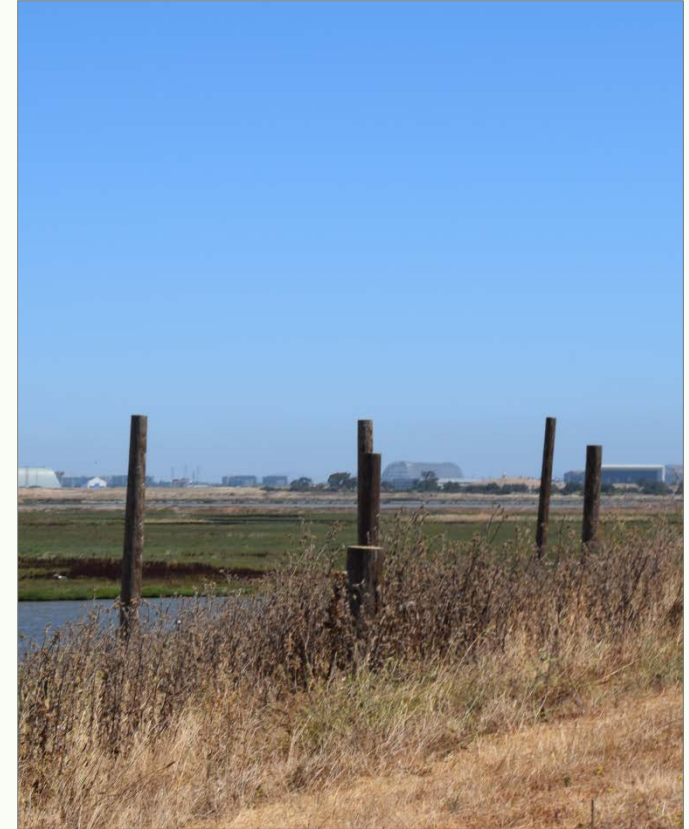
Community & Stakeholder Advisory Group Meeting 2

December 5, 2017



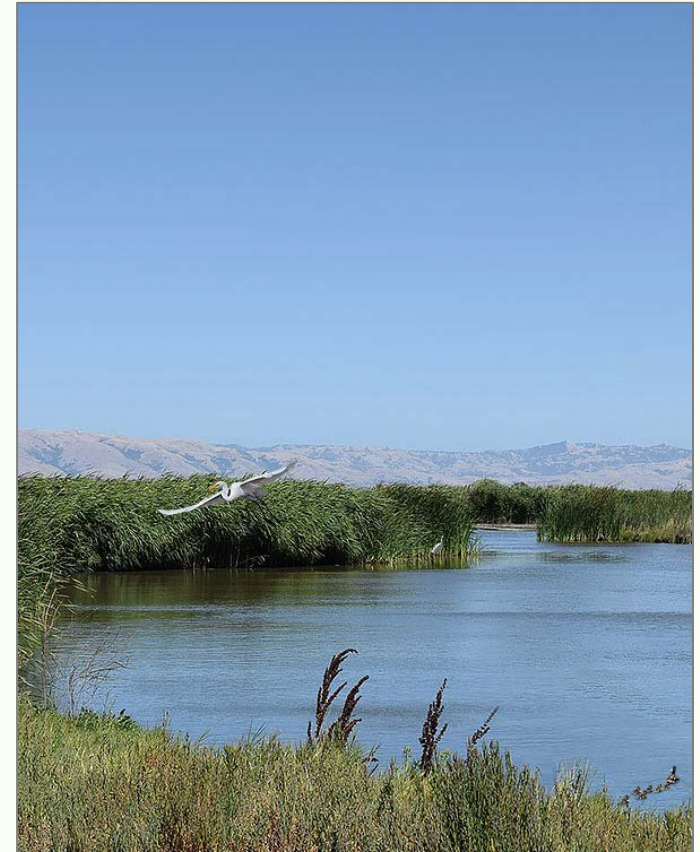
Welcome and Introductions

- City of Palo Alto
 - Daren Anderson, Open Space, Parks and Golf, Division Manager
 - Karin North, Watershed Protection Manager
- AECOM
 - Petra Unger, Project Manager
 - Diana Edwards, Deputy Project Manager
 - Laura Adleman, Outreach Specialist
 - Carol Maxwell, Restoration Ecologist



Today's Agenda

- BCCP Overview
 - Planning process
 - Steps to date
- Themes from last meeting
- Byxbee Park overview
- Former ITT site/Renzel Wetlands overview
- Stakeholder activity - share your ideas
- Report back





BCCP Overview

- What is it?
 - A comprehensive plan for holistically managing the City of Palo Alto's 1,976.5 acre Baylands Preserve for the next 15 years and beyond
 - An ecosystem-based approach that strives to balance resource protection, environmental education, and recreational use
 - Takes future projects and current trends such as sea level rise and climate change into account
 - Includes site-specific aspects for the former ITT property and Byxbee Park





BCCP Overview (cont'd)

- Planning Process
 - 18 month process (June 2017 to December 2018)
 - Incorporation of 2008 Baylands Master Plan Update
 - New trends/projects/data
 - Stakeholder outreach and engagement
 - 12 distinct tasks





BCCP Overview (cont'd)

- Steps to date

- Developed Work Plan
- Documented Existing Conditions
- Developed Stakeholder Engagement Plan
- Stakeholder meeting 1 on October 18
- Tour of former ITT site/Renzel Wetlands on November 13
- Project website:
http://www.cityofpaloalto.org/gov/depts/csd/parks/preserves/baylands_comprehensive_conservation_plan.asp



Themes from Oct 18 Meeting

- **Recreation:**

- Continued opportunities for recreation through an appropriate trail network

- **Natural Resources:**

- Comprehensive management of natural resources
- Prioritize preservation, restoration, and enhancement of natural resources, native habitat, and open space

- **Wildlife:**

- Migratory bird habitat, healthy habitats are important
- Restrict ground squirrel control at Byxbee Park



Themes from Oct 18 Meeting (cont'd)

- **Sea Level Rise/Climate Change**
 - Planning for SR/CC should be an important goal
- **Community/Organization Partnerships**
 - Partnerships with community and environmental education organizations are important
- **Stakeholder/Community Involvement**
 - Process should include public input
- **Projects**
 - Limit projects within Baylands
 - Timing of projects should be sequenced to limit disturbance





Themes from Oct 18 Meeting (cont'd)

- **Former Los Altos Treatment Plant**

- Would like to see areas of former LATP restored and dedicated as parkland

- **Byxbee**

- Trail connections to former ITT property
- Completion of interpretive signage and trail system
- Fewer trails and better connections

- **Former ITT Property/Renzel Wetlands**

- Remove buildings, restore landscape, restrict human access
- Restore buildings, promote access to site





Former ITT Site/Renzel Wetlands

- 154-acre former radio transmitting station with antenna field
- City dedicated as parkland 1982 (except 36.5 acres)
- 1992 Renzel Wetlands beneficial use project:
 - Created 15-acre freshwater marsh
 - Restored 12-acre saltwater marsh
- 2016 city acquired and dedicated 36.5 acre parcel





CITY OF
**PALO
ALTO**

Renzel Wetlands – Restored in 1992





CITY OF
**PALO
ALTO**

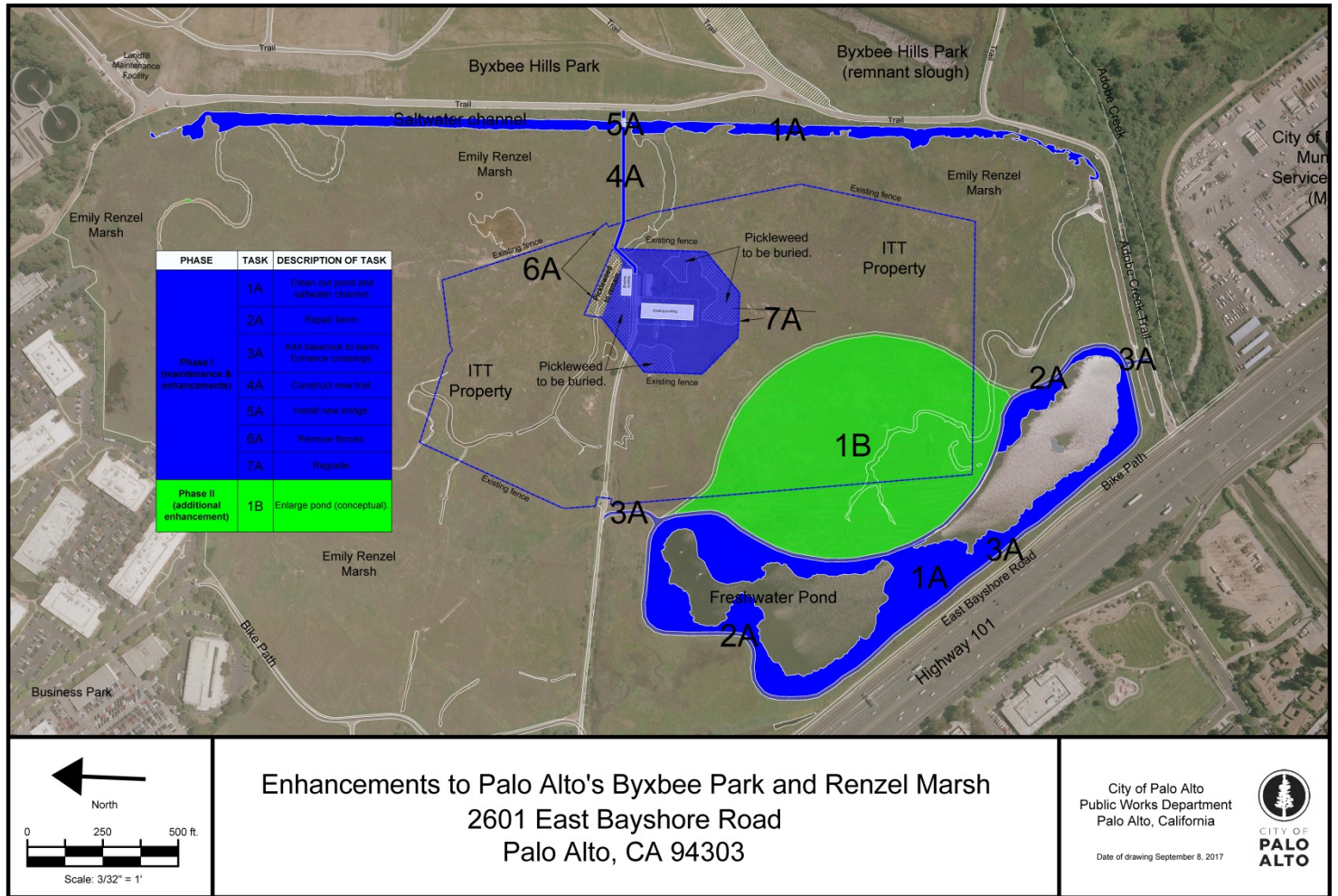
Palo Alto Regional Water Quality Control Plant





CITY OF
**PALO
ALTO**

Renzel Wetlands/Former ITT - Proposed Enhancements





Byxbee Park – Site History

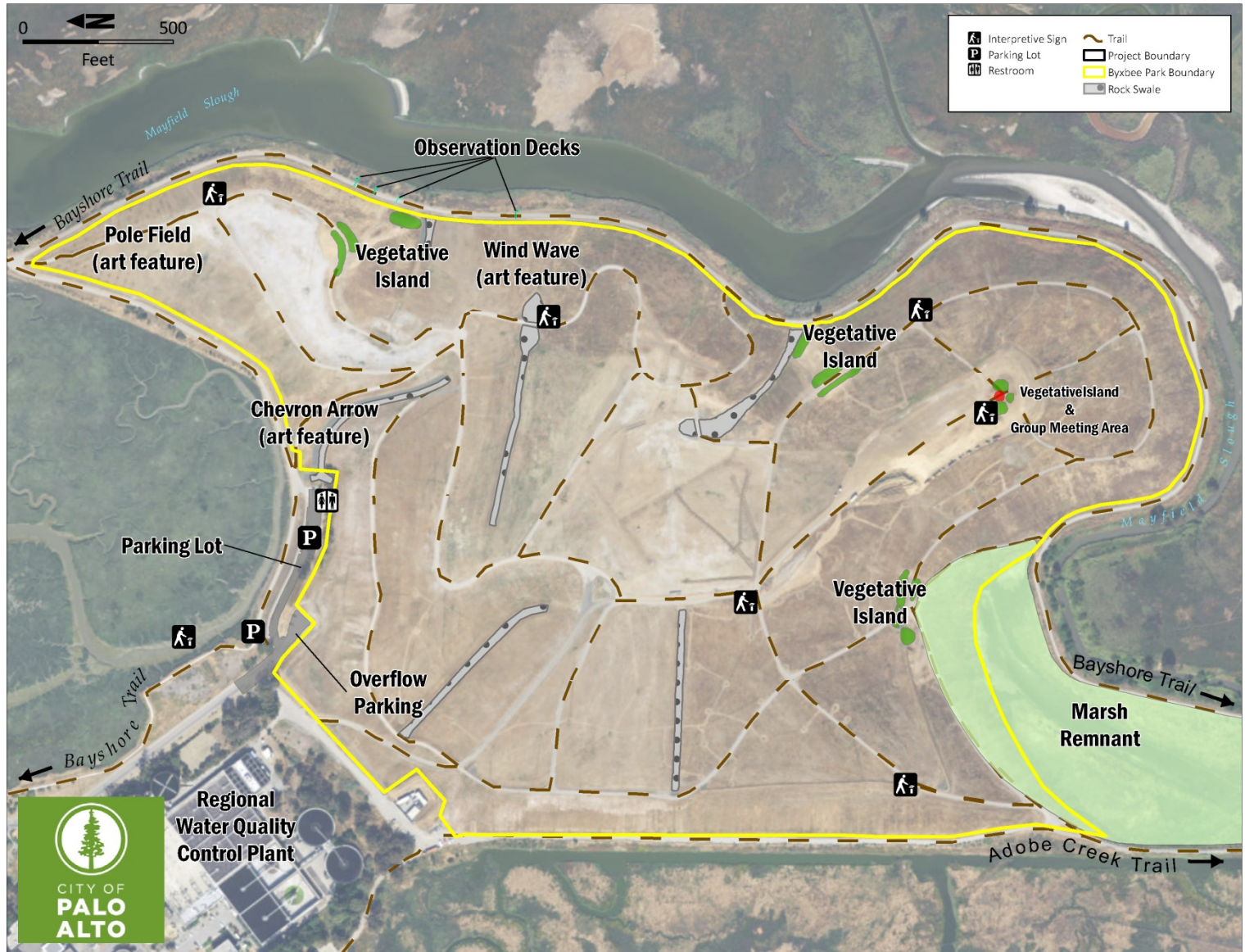
- Landfill 1930 – 2014
- Landfill closure/pastoral park developed in phases
- Clay cap to seal buried refuse





CITY OF
**PALO
ALTO**

Byxbee Park – Site Features





Byxbee Park – Interim Park Plan 2015

- Elements of the Plan that need to be finalized:
 - Vegetation Management Plan
 - Trail Plan
 - Parking Plan
 - Bench Location Plan
 - Interpretive Signage Plan





CITY OF
**PALO
ALTO**

BCCP Community & Stakeholder Workshop

Stakeholder Activity





Discussion questions to consider

- What opportunities/features would you like to see at Byxbee Park and/or the former ITT site, if any?
- Do you support public use of the former ITT site? To what extent?
- What is the best use of the potentially historic building on the former ITT, if any?
- Where do you see opportunities for benches, signage, or parking at Byxbee Park?
- What changes or additions, if any, would you like to see in Byxbee Park?
- What are your ideas for creating better trail connections among the various parcels?
- Where do you see opportunities for public art, if any?
- What is the role of both parcels in conservation?





Group Discussion

- Report-back:
 - What are the top 3 things you discussed at your table?
 - 1)
 - 2)
 - 3)





CITY OF
**PALO
ALTO**

Thank You

Kristen O’Kane – Kristen.O'Kane@CityofPaloAlto.org

Daren Anderson – Daren.Anderson@CityofPaloAlto.org

Petra Unger – Petra.Unger@aecom.com

