

BIKE TRAIL HEAD CHARACTER



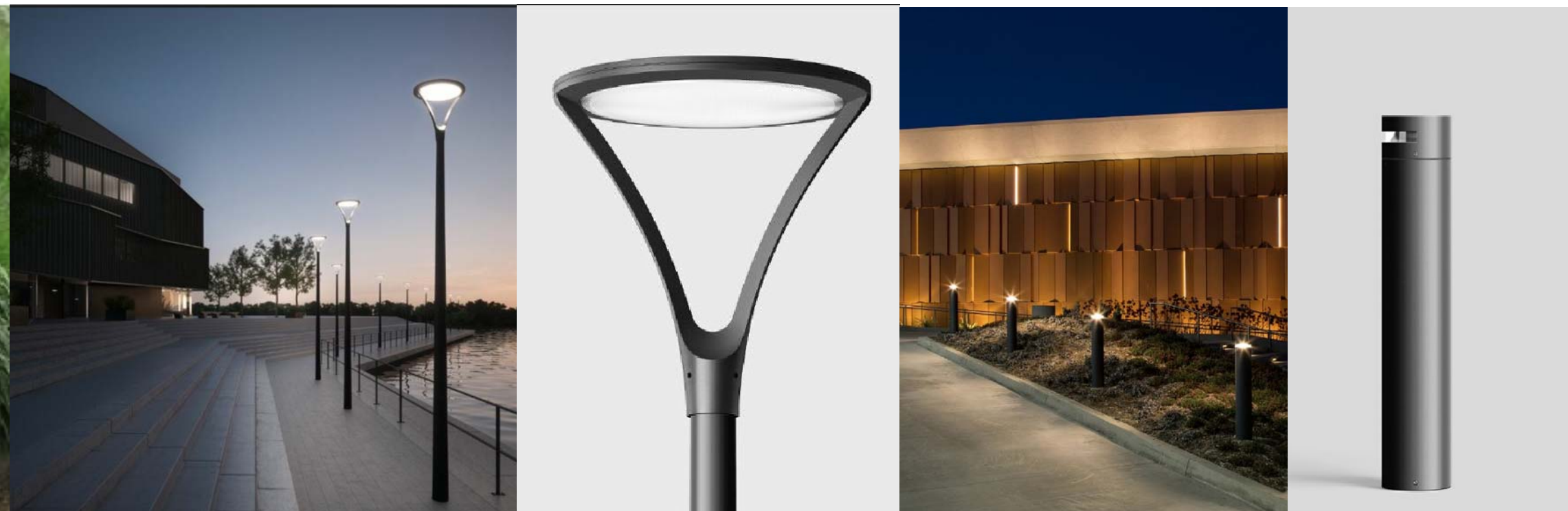
PLANT PRECEDENT IMAGES



Tulip Tree California Buckeye Coast Live Oak



Autumn Moor Grass Creeping Wild Rye Deer Grass



L-1. Pole Light, Bega #84121 L-2. Bollard Light, Bega #77753



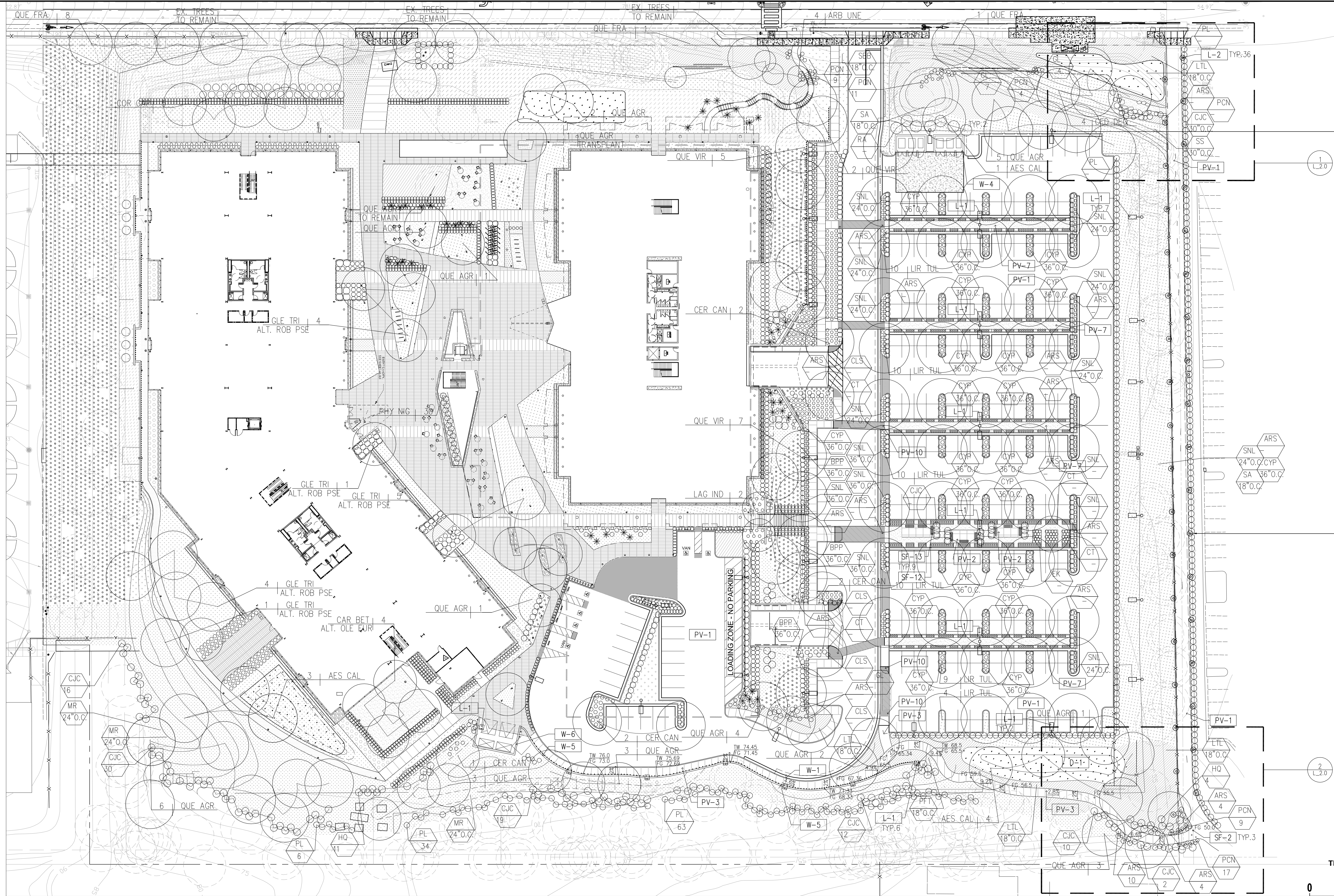
Ceanothus 'Yankee Point' English Laurel Sunset Manzanita Oak-leaved Hydrangea Dwarf Karo Coyote Brush Ceanothus 'Joyce Coulter'


MATERIALS SCHEDULE – 3223 HANOVER STREET (PH2) – BIKE PATH/PARKING

SYMBOL	DESCRIPTION	PRODUCTS/ITEM #	FINISH/COLOR	SOURCE
PAVING				
PV-1	ASPHALT	S.C.D.		
PV-2	NOT USED			
PV-3	4" CONCRETE PAVING-PED.	SEE CITY STANDARD	SANDBLAST, NATURAL GRAY	SEE CITY STANDARDS
PV-4	NOT USED			
PV-5	3/8" TOOL JOINT W/ 3/8" EJ.	P.I.P CONCRETE, INTEGRAL COLOR, MED. SAND BLAST FINISH	SANDSTONE	DAVIS COLOR
PV-6	NOT USED			
PV-7	DECOMPOSED GRANITE W/ GRAVEL PAVE2 SYSTEM	1/4" CLEAN/GRAVELPAVE2	D.G. COLOR: SIERRA TAN GRAVELPAVE2: CHARCOAL	SBI BUILDING MATERIALS/ INVISIBLE STRUCTURE
PV-8	NOT USED			
PV-9	NOT USED			
PV-10	TRUNCATED DOME PAVER	2x12"x12"	CITY STANDARDS-CHARCOAL GREY	ACKERSTONE
PV-11	PRECAST CONC. PAVING-VEH. TYPE 1	NARROW MOD. PAVER, 4"x3"x12"	FINISH: SHOT BLAST, COLOR: PORCELAIN	ACKERSTONE
PV-12	PAVE EDGE RESTRAINT (NATURAL GROUND)	3"x3" W/ ASPHALT EDGE	FINISH: MILL	PERMALOC
PV-13	NOT USED			
WALL & CURBS				
W-1	SITE CURB & GUTTER	S.C.D.		
W-2	NOT USED			
W-3	NOT USED			
W-4	TRASH ENCLOSURE WALLS	S.A.D.		
W-5	SITE RETAINING WALL – TYPE 1	GRAVITY BLOCK W/ PLANT POCKET	GREY/OLIVE	FURBISH CO. CONTACT: 443.874.7465
W-6	SITE RETAINING WALL – TYPE 2	P.I.P CONCRETE, INTEGRAL COLOR	FINISH: MED. SAND BLAST, COLOR: SANDSTONE	DAVIS COLOR
SITE FURNISHINGS				
SF-1	WOODEN BENCH	PALISADE	PALISADE	LANDSCAPE FORMS
SF-2	FIXED BOLLARD	36"H X 6" DIA #SSF06080 FIXED	6" DIA 316 STAINLESS STL. POLISHED STAINLESS STL. #4 FINISH, FLAT CAP	CALPIPE SECURITY BOLLARD
DRAINAGE				
D-1	BIORETENTION	S.C.D. FOR DRAINAGE PLAN		
LIGHTING				
L-1	POLE LIGHT	#84121	32.0W LED	BEGA
L-2	BOLLARD LIGHT	#77753	STAINLESS STEEL	BEGA

PLANT SCHEDULE – 3223 HANOVER STREET (PH2)

SIZE	ID	BOTANICAL NAME	COMMON NAME	QUANTITY	WUCOL
TREES					
24" BOX	CER CAN	Cercis canadensis	Redbud		M
24" BOX	QUE KEL	Quercus kelloggii	California Black Oak		M
24" BOX	QUE VIR	Quercus virginiana 'standard'	Southern live Oak		M
36"/48" BOX	QUE AGR	Quercus agrifolia 'natural'	California live oak		M
36" BOX	GLE TRI	Gleditsia tricanthos	Thornless Honey Locust		M
24" BOX	MAG GRA	Magnolia grandiflora	Magnolia 'Majestic Beauty'		M
24" BOX	ROB PSE	Robinia pseudoacacia	Black Locust		M
15 GAL	FEJ SEL	Feijoa sellowiana	Pineapple Guava		L
36" BOX	LAG IND	Lagerstroemia indica 'Natchez'	Crape Myrtle, Single/Multi		L
36" BOX	AES CAL	Aesculus californica	California Buckeye		L
24" BOX	COR CAP	Cornus capitata 'Mountain Moon'	Evergreen Dogwood		L
24" BOX	ARB MAR	Arbutus 'Marina'	Arbutus		L
24" BOX	QUE FRA	Quercus frainetto	Hungarian Oak		L
24" BOX	CED DEO	Cedrus deodara	Himalayan Cedar		L
24" BOX	OLE EUR	Olea europaea	Olive Tree		L
24" BOX	CAR BET	Carpinus beetles 'fastigate'	Hornbeam		L
15 GAL	PHY NIG	Phyllostachys nigra	Black Bamboo		L
24" BOX	LIR TUL	Liriodendron tulipifera	Tulip Tree		M
SIZE	ID	BOTANICAL NAME	COMMON NAME	SPACING	WUCOL
SHRUBS					
5 Gal.	AUC	Arbutus unedo 'Compacta'	Strawberry Tree	AS SHOWN	L
1 Gal.	APM	Arctostaphylos 'Pacific Mist'	Manzanita	36" O.C.	L
5 Gal.	ARS	Arctostaphylos 'Sunset'	Manzanita	30" O.C.	L
1 Gal.	BPP	Baccharis pilularis 'Pigeon Point'	Coyote Brush	36" O.C.	L
5 Gal.	RCM	Rhamnus cal. 'Mound San Bruno'	Coffee 'Mound San Bruno'	24" O.C.	L
5 Gal.	OLE	Olea europaea 'little ollie'	Little Ollie	AS SHOWN	M
5 Gal.	RA	Rhamnus alternus	Italian Buckthorn	24" O.C.	L
1 Gal.	CAS	Calandrinia spectabilis	Rock Purslane	24" O.C.	L
5 Gal.	CJC	Ceanothus 'Joyce Coulter'	Evergreen Mountain Lilac	24" O.C.	L
5 Gal.	HQ	Hydrangea quercifolia 'Pee Wee'	Oak-leaved Hydrangea	AS SHOWN	M
5 Gal.	PCN	Pittosporum crassifolium 'Nana'	Dwarf Karo	30" O.C.	M
5 Gal.	BJ	Buxus japonica 'Green Beauty'	Green Beauty Boxwood	AS SHOWN	M
15 Gal.	PL	Prunus laurocerasus	English Laurel	AS SHOWN	M
1 Gal.	ROS	Rosmarinus officinalis 'Tuscan Blue'	Upright Rosemary	AS SHOWN	L
PERENNIALS					
1 Gal.	SS	Salvia sonomensis	Creeping Sage	24" O.C.	L
1 Gal.	SC	Salvia chamaedryoides	Blue Sage	24" O.C.	L
4" Pot	AM	Achillea millefolium – White	Yarrow	24" O.C.	L
1 Gal.	SGA	Salvia greggii 'Alba'	White Sage	24" O.C.	L
1 Gal.	VB	Verbena bonariensis	Purple Top Verbena	24" O.C.	L
1 Gal.	BF	Bulbine frutescens	Stalked Bulbine	24" O.C.	M
1 Gal.	GL	Gaura lindheimeri	Gaura Whirling Butterflies	24" O.C.	L
1 Gal.	LSW, LSP	Liatris spicata – White & Lavender	Gayfeather	24" O.C.	M
4" Pot	NF	Nepeta x faassenii	Catmint	24" O.C.	L
4" Pot	ERI	Erigeron karvinskianus	Fleabane	AS SHOWN	M
1 Gal.	SNL	Salvia greggii 'Nuevo Leon'	Nuevo Leon Autumn Sage	24" O.C.	L
1 Gal.	AZ	Azalea 'Fielder's White'	Fielder's White Azalea	AS SHOWN	M
SUCCULENTS/GROUNDCOVERS/GRASSES					
5 Gal.	AL	Aloe barbadensis	Aloe	24" O.C.	L
15 Gal.	YG	Yucca gloriosa	Yucca	24" O.C.	L
4" Pot	SM	Scenecio montevidensis	Bluefingers	24" O.C.	L
1 Gal.	CS	Cistus spp 'alba'	Sageleaf Rockrose	18/36" O.C.	L
4" Pot	LTL	Leymus tridicoites 'Lagunitas'	Creeping Wild Rye	18" O.C.	L
2" Plug	CP	Carex pansa	California Meadow Sedge	24" O.C.	L
4" Pot	LLB	Lomandra longifolia 'Breeze'	Dwarf Mat Rush	24" O.C.	L
2" Plug	CT	Carex tumulicola	Berkeley Sedge	18" O.C.	M
1 Gal.	JP	Juncus patens	California Gray Rush	24" O.C.	M
2" Plug	MR	Muhlenbergia rigens	Deer Grass	24" O.C.	M
2" Plug	SA	Sesleria autumnalis	Autumn Moor Grass	18" O.C.	M
2" Plug	PS	Pennisetum spathiolatum	Slender Veldt Grass	24" O.C.	L
1 Gal.	SBB	Salvia sonomensis 'Bees Bliss'	Creeping Sage	18" O.C.	L
4" Pot	HS	Helictotrichon sempervirens	Blue Oat Grass	18" O.C.	L
1 Gal.	NC	Nephrolepis cordifolia	Sword Fern	AS SHOWN	M
Sod	FR	Festuca rubra 'No Mow'	Red Fescue/No Mow	24" O.C.	L
1 Gal.	CGY	Ceanothus griseus var. horizontalis 'Yankee Point'	Yankee Point California Lilac	36" O.C.	VL
1 Gal.	CLS	Cistus x laxus 'Snow White'	Rock Rose 'Snow White'	AS SHOWN	VL

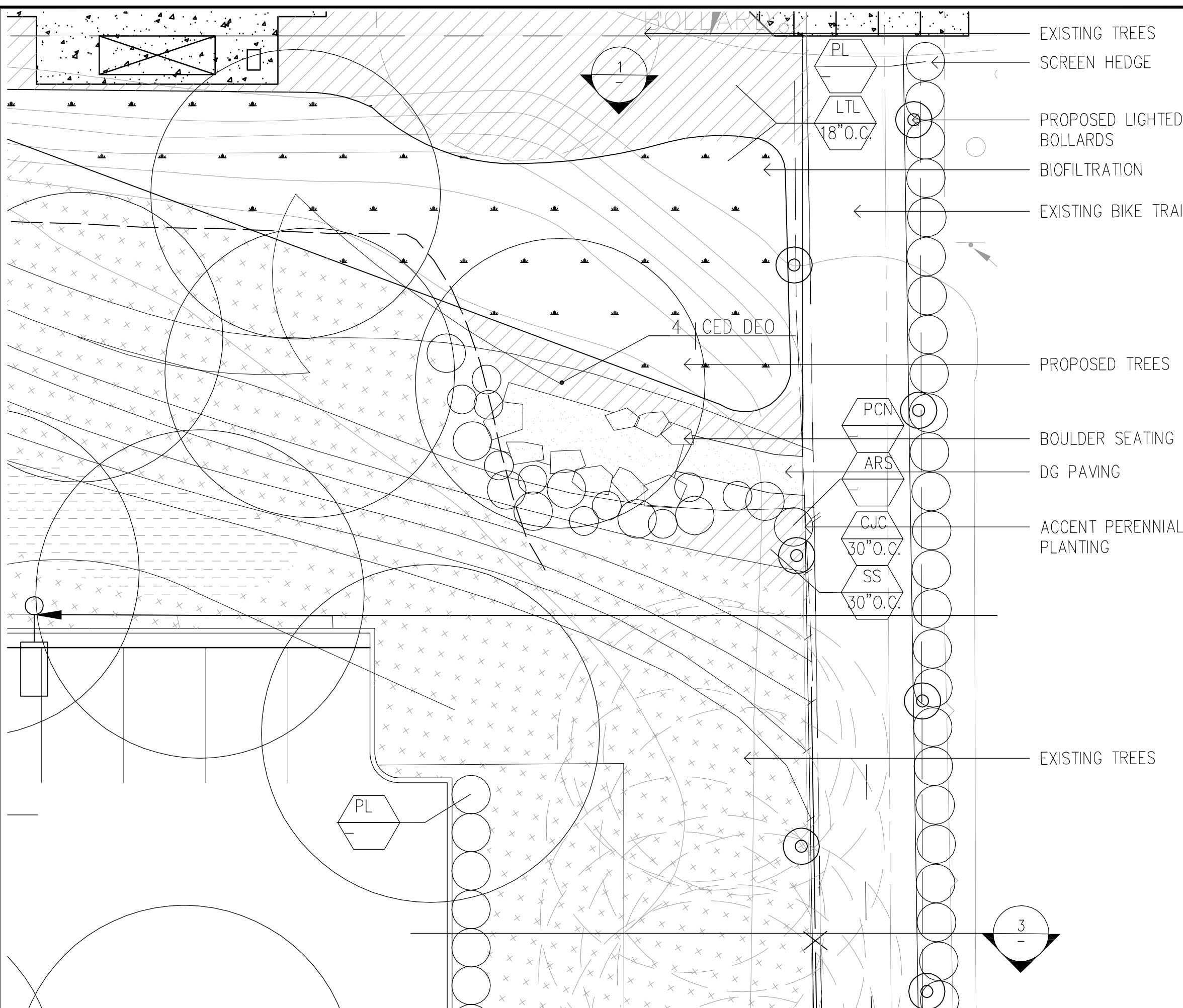



Form 4
 126 Post Street, 3rd Floor
 San Francisco, CA 94108
 T 415.775.8748
 F 415.775.8752
 WWW.FORM4INC.COM

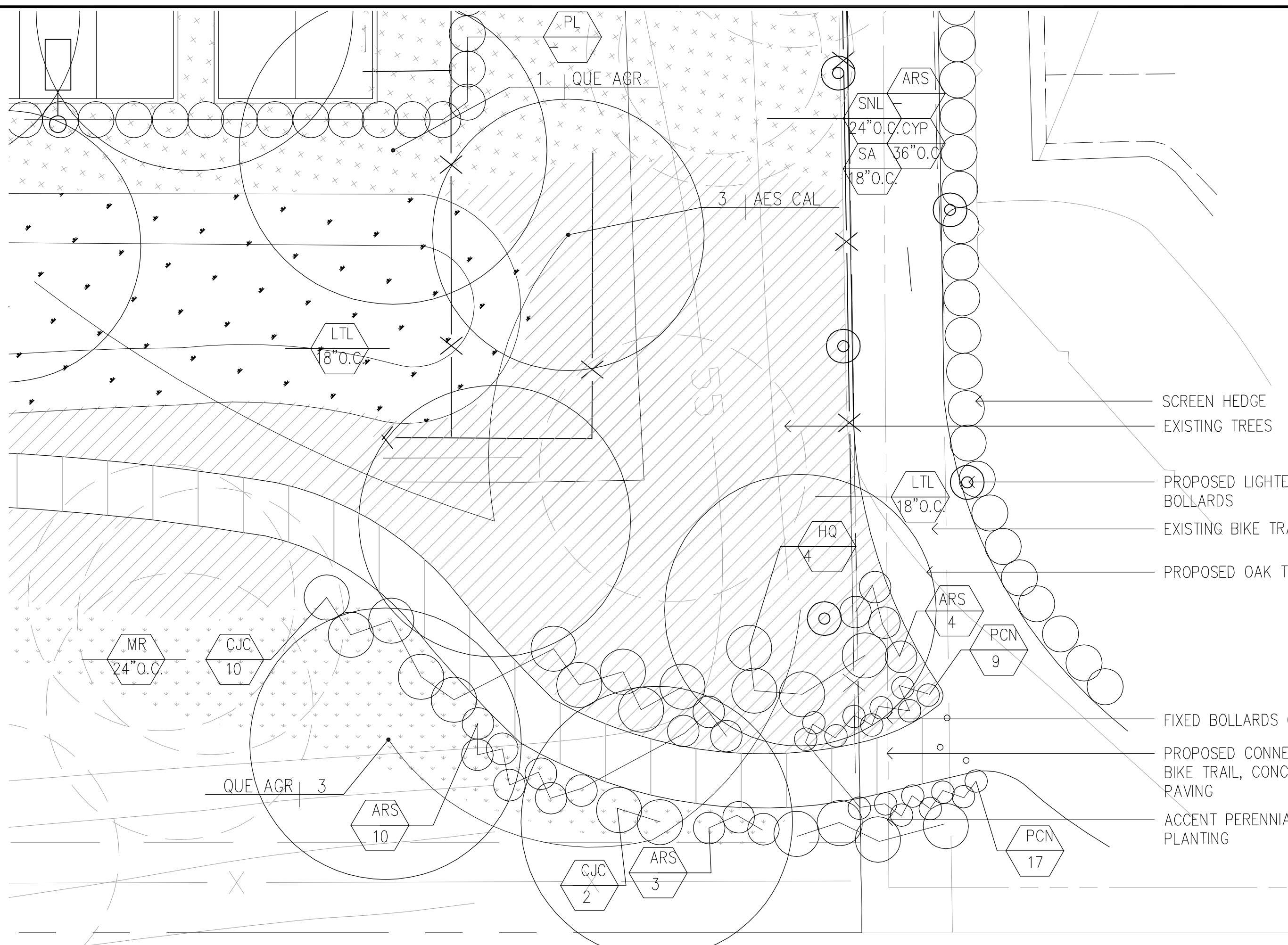
STUDIO FIVE | DESIGN
 Landscape Architecture + Site Planning
 25 SAN ANSELMO AVE
 SAN ANSELMO, CA 94960 P 415.524.8517

3223 HANOVER ST. (PH2)
 PALO ALTO, CA.
SAND HILL PROPERTIES COMPANY

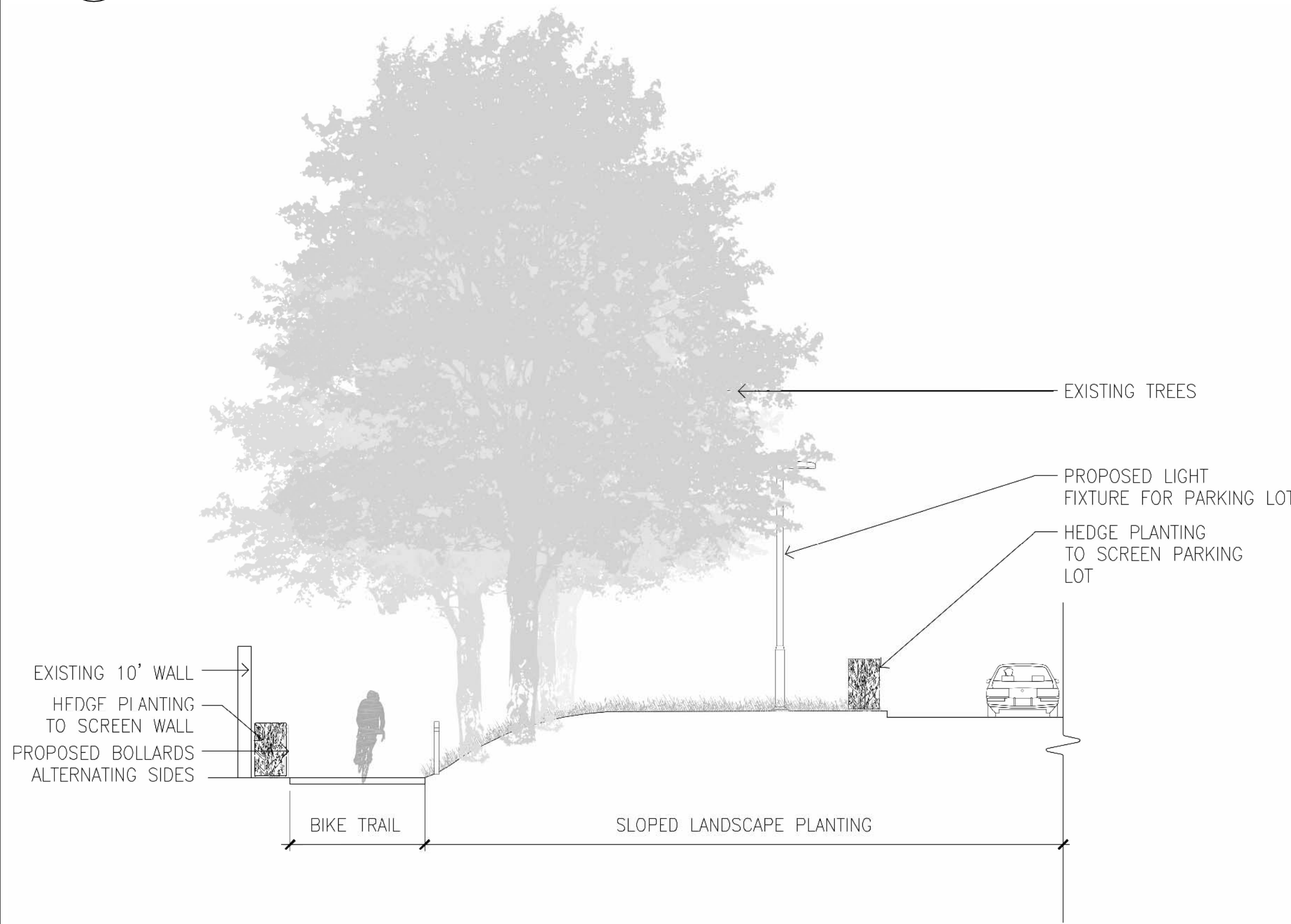
MATERIALS PLAN **L 1.0**
 10/26/2018



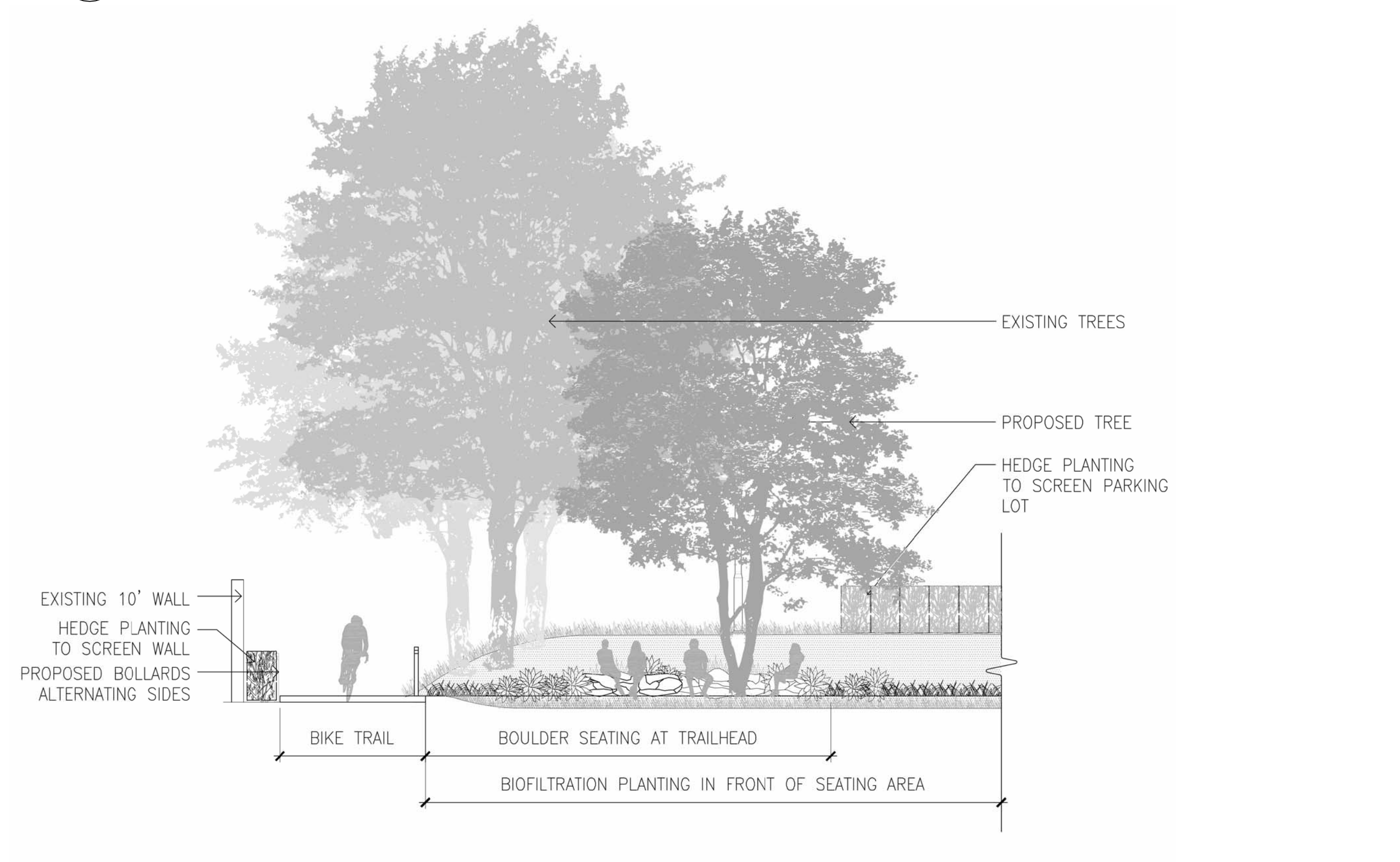
1 BIKE TRAILHEAD ENLARGEMENT PLAN
SCALE: 1" = 10'-0"



2 BIKE TRAIL ENLARGEMENT PLAN
SCALE: 1" = 10'-0"



3 BIKE TRAIL SECTION
SCALE: 1/8" = 1'-0"



4 BIKE TRAIL SEATING AREA SECTION ELEVATION
SCALE: 1/8" = 1'-0"

