

PRELIMINARY PARCEL MAP

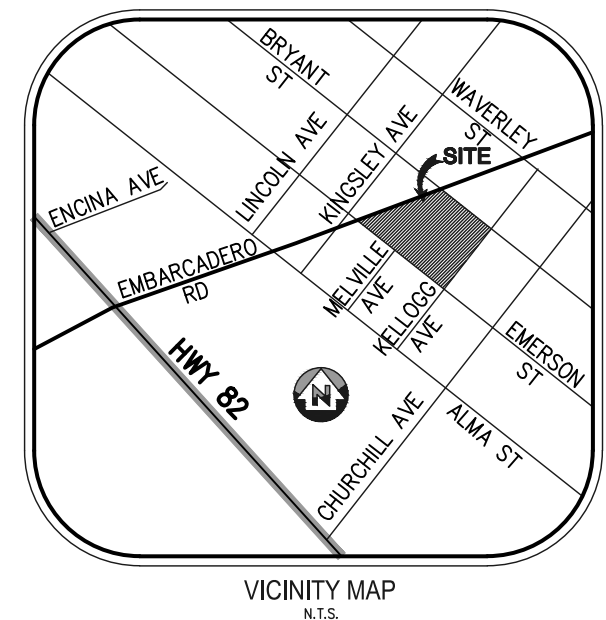
FOR THREE LOT MERGER

PALO ALTO COUNTY OF SANTA CLARA

JUNE 23, 2017

LEGEND

	BUILDING LINE
	BUILDING OVERHANG
	CENTERLINE
	CURB LINE
	EASEMENT LINE
	FENCE LINE
	PROPERTY LINE
	LOT LINE
	GAS LINE
	COMMUNICATION LINE
	OVERHEAD ELECTRIC LINE
	UNDERGROUND ELECTRIC LINE
	WATER LINE
	SANITARY SEWER LINE
	STORM DRAIN LINE

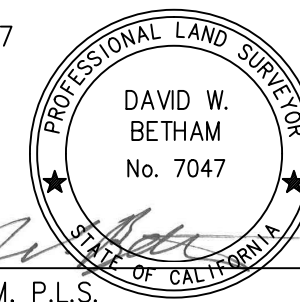


PARCEL AREAS		
PARCEL#	SQ. FT.	ACRE
PARCEL "A"	7,500	0.17
PARCEL 1	10,500	0.24
PARCEL 2	268,783	6.17
TOTAL AREA	286,783	6.58

SURVEYOR'S STATEMENT

THIS MAP WAS PREPARED BY ME OR UNDER MY DIRECTION AND IS BASED UPON A FIELD SURVEY IN CONFORMANCE WITH THE REQUIREMENTS OF THE SUBDIVISION MAP AND LOCAL ORDINANCE AT THE REQUEST OF CASTILLEJA SCHOOL IN JUNE OF 2017.

DATE: JUNE 23, 2017



BY: *David W. Betham*
DAVID W. BETHAM, P.L.S.
CALIFORNIA REG. NO. 7047

OWNER AND SUBDIVIDER

CASTILLEJA SCHOOL FOUNDATION, A CALIFORNIA CORPORATION
1310 BRYANT STREET, PALO ALTO, CA 94301

ZONING

R-1 (10000), CITY OF PALO ALTO

MERGER NOTES:

THIS PRELIMINARY MAP ILLUSTRATES THE MERGING OF PARCELS 124-12-033 AND 124-12-031 TO BECOME PART OF 124-12-034.

FLOOD ZONE DESIGNATION

THE SUBJECT PROPERTY IS DETERMINED TO BE IN ZONE X (OTHER FLOOD AREAS), WHICH INCLUDE AREAS OF 0.2% ANNUAL CHANCE FLOOD; AREAS OF 1% ANNUAL CHANCE FLOOD WITH AVERAGE DEPTHS OF LESS THAN 1 FOOT OR WITH DRAINAGE AREAS LESS THAN 1 SQUARE MILE; AND AREAS PROTECTED BY LEVEES FROM 1% ANNUAL CHANCE FLOOD AS PER FEDERAL EMERGENCY MANAGEMENT AGENCY FLOOD INSURANCE RATE MAP PANEL 0017 H, MAP NUMBER 06085C0017H, DATED MAY 18, 2009.

BASIS OF BEARINGS

THE BEARING NORTH 51°42'00" WEST OF BRYANT STREET AS SHOWN ON THE "MAP OF THE SEALE ADDITION TO THE TOWN OF PALO ALTO" FILED IN BOOK F-3 OF MAPS AT PAGE 63, SANTA CLARA COUNTY RECORDS, WAS USED AS BASIS OF BEARINGS FOR THIS MAP.

BENCHMARK

THE ELEVATION REFERENCE FOR THIS SURVEY IS A CITY OF PALO ALTO BENCHMARK, BM ID 2103, AT THE INTERSECTION OF EMERSON AND KELLOGG, DESCRIBED AS CHISELED SQUARE LOCATED IN THE NORTHWEST CORNER OF KELLOGG AND THE NORTHEAST PART OF THE RETENTION. (ORIGINALLY NGVD 29, ADJUSTED TO NAVD 88)

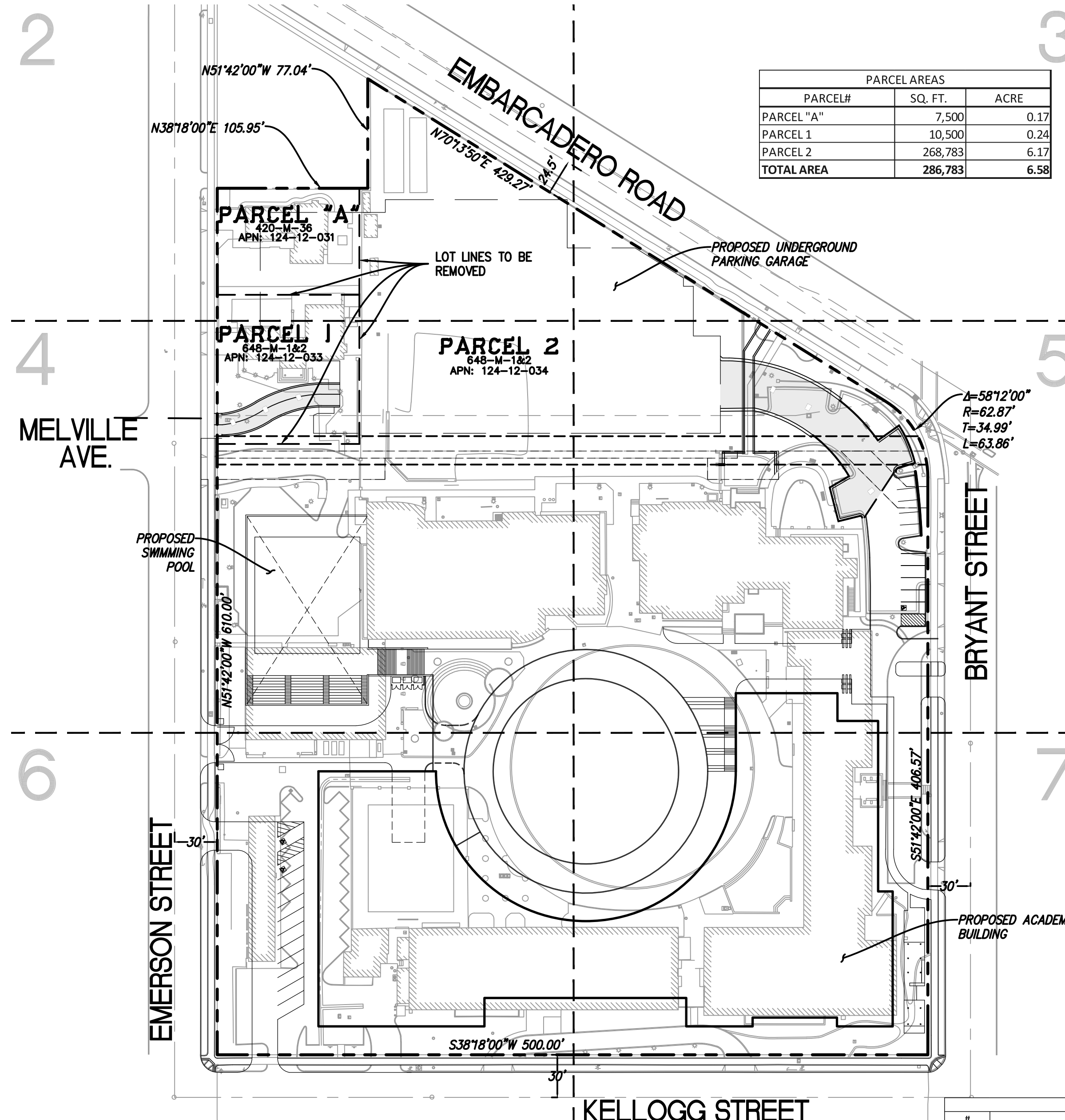
ELEV=41.010 FEET (NAVD 88 DATUM)

NOTES:

- ALL DISTANCES AND DIMENSIONS ARE SHOWN IN FEET AND DECIMALS THEREOF.
- DATES OF FIELD SURVEY: 12/27/2016-01/24/17
- THERE WILL BE NO IMPACT TO EXISTING STREETS.
- THERE WILL BE NO CHANGES TO ZONING.
- THERE ARE NO WATER WELLS.

EASEMENTS FROM TITLE REPORT

#	EXCEPTION/EASEMENT/PURPOSE	DOCUMENT #/BK & PG	PLOTTED? LOCATION.
13	EASEMENT FOR PUBLIC UTILITIES	BOOK M218 PAGE 0593	BETWEEN SOFTBALL FIELD AND SCHOOL YARD WHERE MELVILLE WOULD CONTINUE
14	EASEMENT FOR ACCESS TO INSTALL, OPERATE AND MAINTAIN PUBLIC UTILITIES	BOOK M671 PAGE 1019	BETWEEN SOFTBALL FIELD AND SCHOOL YARD WHERE MELVILLE WOULD CONTINUE



NO PART OF THIS DOCUMENT MAY BE REPRODUCED IN ANY FORM INCLUDING PHOTOCOPY, RECORDING OR ANY INFORMATION RETRIEVABLE AND STORAGE SYSTEM, WITHOUT PERMISSION IN WRITING FROM SANDIS.



**CIVIL ENGINEERS
SURVEYORS
PLANNERS**

1700 Winchester Boulevard, Campbell, CA 95008 | P. 408.636.0900 | F. 408.636.0999 | www.sandis.net

SILICON VALLEY TRI-VALLEY CENTRAL VALLEY SACRAMENTO EAST BAY/SF

DATE	No.	REVISION/ISSUE	DATE	BY
06-23-2017				
SCALE	1"= 60'			
DRAWN BY:	LW			
APPROVED BY:	ND			
DRAWING NO.	216111			

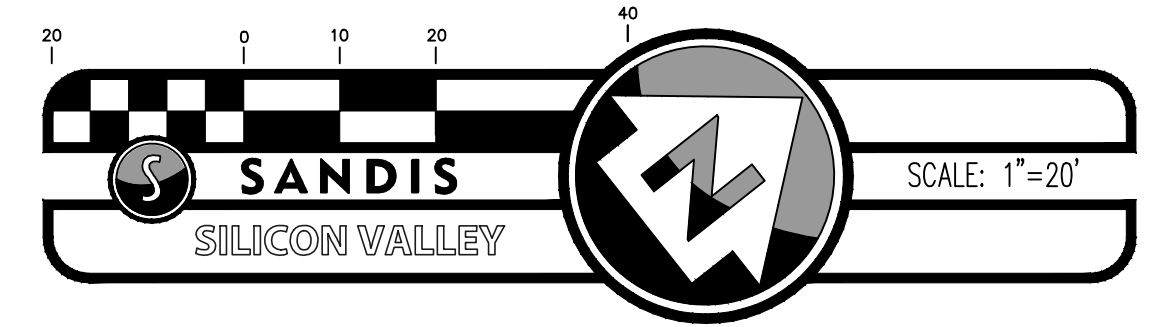
CASTILLEJA SCHOOL
PALO ALTO CALIFORNIA

SHEET

1

OF 7 SHEETS

NO PART OF THIS DOCUMENT MAY BE REPRODUCED IN ANY FORM INCLUDING PHOTOCOPY, RECORDING OR ANY INFORMATION RETRIEVABLE AND STORAGE SYSTEM, WITHOUT PERMISSION IN WRITING FROM SANDIS.



MATCHLINE - SEE SHEET 3

SDMH RIM 43.53
INV 10" IN(W) 39.83
INV 12" IN(SW) 37.91
INV 18" IN(NW) 37.78
INV 18" OUT(NE) 37.73

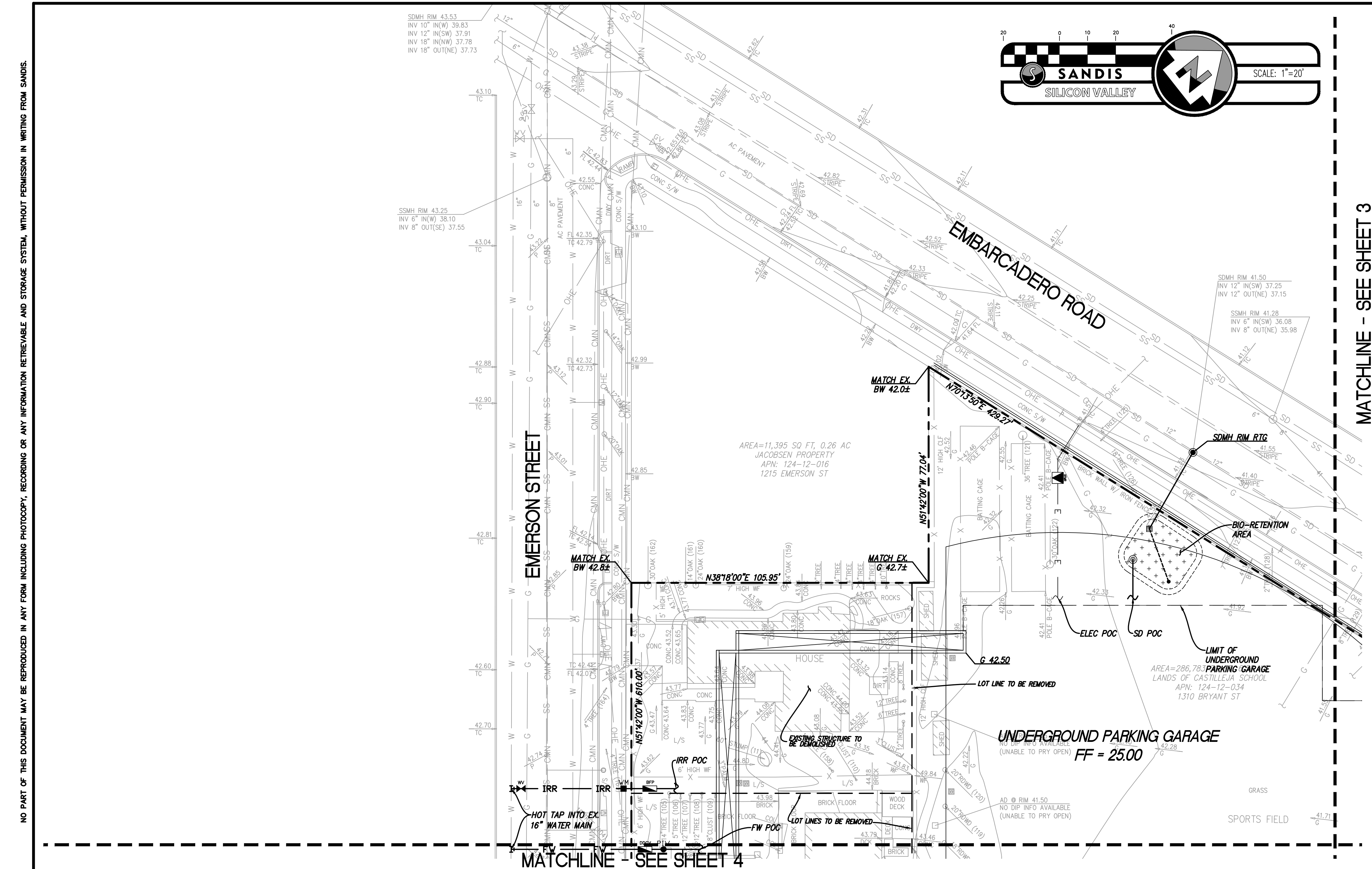
SSMH RIM 43.25
INV 6" IN(W) 38.10
INV 8" OUT(SE) 37.55

SDMH RIM 41.50
INV 12" IN(SW) 37.25
INV 12" OUT(NE) 37.15

SSMH RIM 41.28
INV 6" IN(SW) 36.08
INV 8" OUT(NE) 35.98

AREA=11,395 SQ FT, 0.26 AC
JACOBSEN PROPERTY
APN: 124-12-016
1215 EMERSON ST

AREA=286,783 SQ FT
LANDS OF CASTILLEJA SCHOOL
APN: 124-12-034
1310 BRYANT ST



MATCHLINE - SEE SHEET 4



CIVIL ENGINEERS
SURVEYORS
PLANNERS

1700 Winchester Boulevard, Campbell, CA 95008 | P. 408.636.0900 | F. 408.636.0999 | www.sandis.net

SILICON VALLEY TRI-VALLEY CENTRAL VALLEY SACRAMENTO EAST BAY/SF

DATE	No.	REVISION/ISSUE	DATE	BY
06-23-2017				
SCALE	1" = 20'			
DRAWN BY:	LW			
APPROVED BY:	ND			
DRAWING NO.	216111			

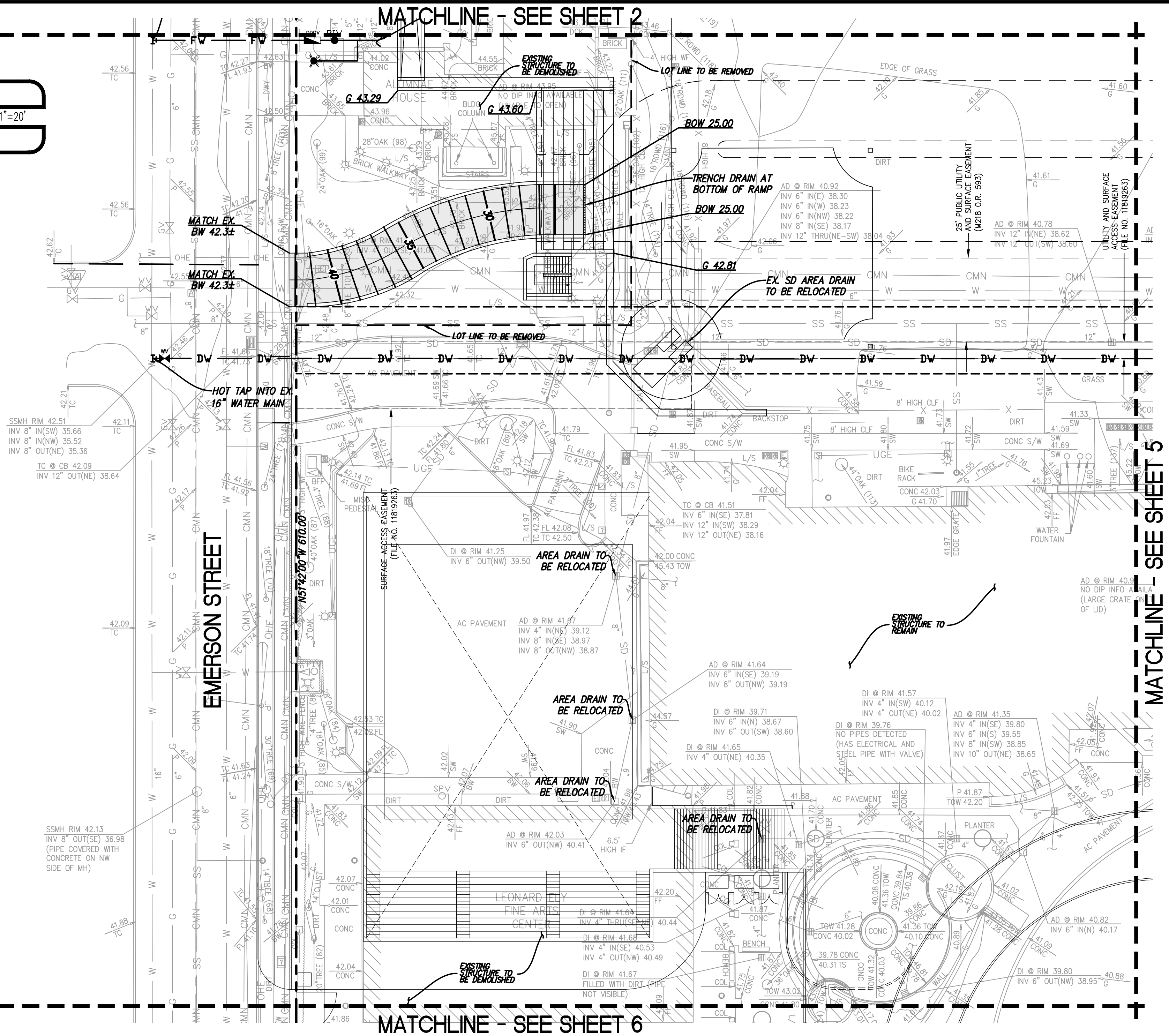
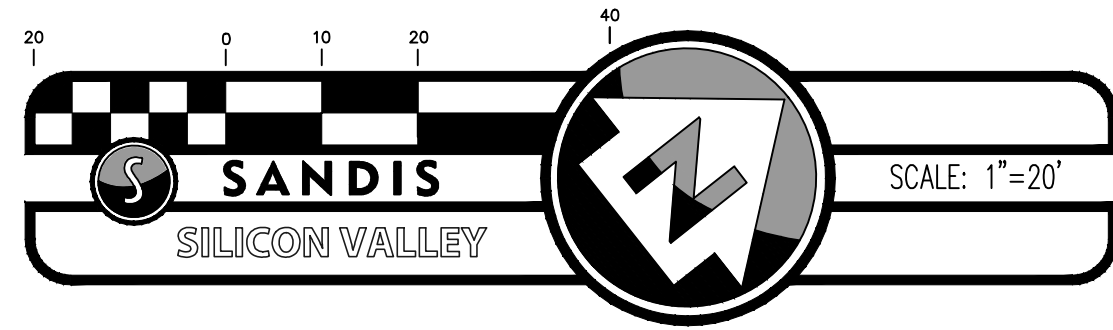
CASTILLEJA SCHOOL
PALO ALTO
CALIFORNIA

SHEET

2

OF 7 SHEETS

NO PART OF THIS DOCUMENT MAY BE REPRODUCED IN ANY FORM INCLUDING PHOTOCOPY, RECORDING OR ANY INFORMATION RETRIEVABLE AND STORAGE SYSTEM, WITHOUT PERMISSION IN WRITING FROM SANDIS.



SANDIS

**CIVIL ENGINEERS
SURVEYORS
PLANNERS**

1700 Winchester Boulevard, Campbell, CA 95008 | P. 408.636.0900 | F. 408.636.0999 | www.sandis.net

SILICON VALLEY TRI-VALLEY CENTRAL VALLEY SACRAMENTO EAST BAY/SF

DATE	No.	REVISION/ISSUE	DATE	BY
06-23-2017				
SCALE	1" = 20'			
DRAWN BY:	LW			
APPROVED BY:	ND			
DRAWING NO.	216111			

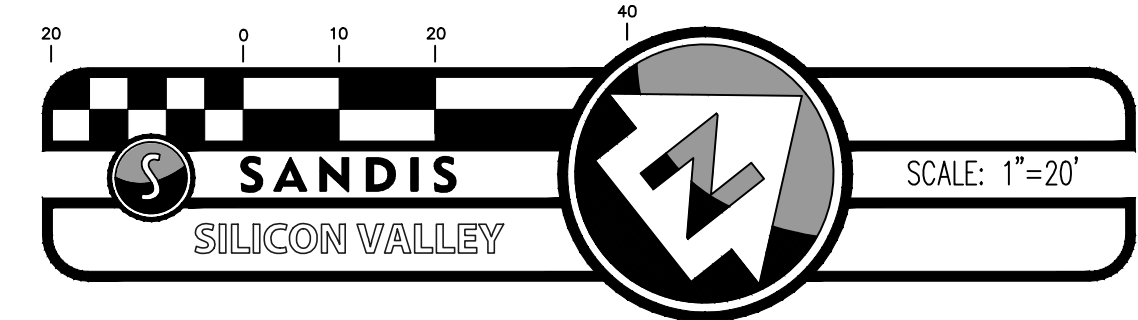
**CASTILLEJA SCHOOL
PALO ALTO
CALIFORNIA**

SHEET

4

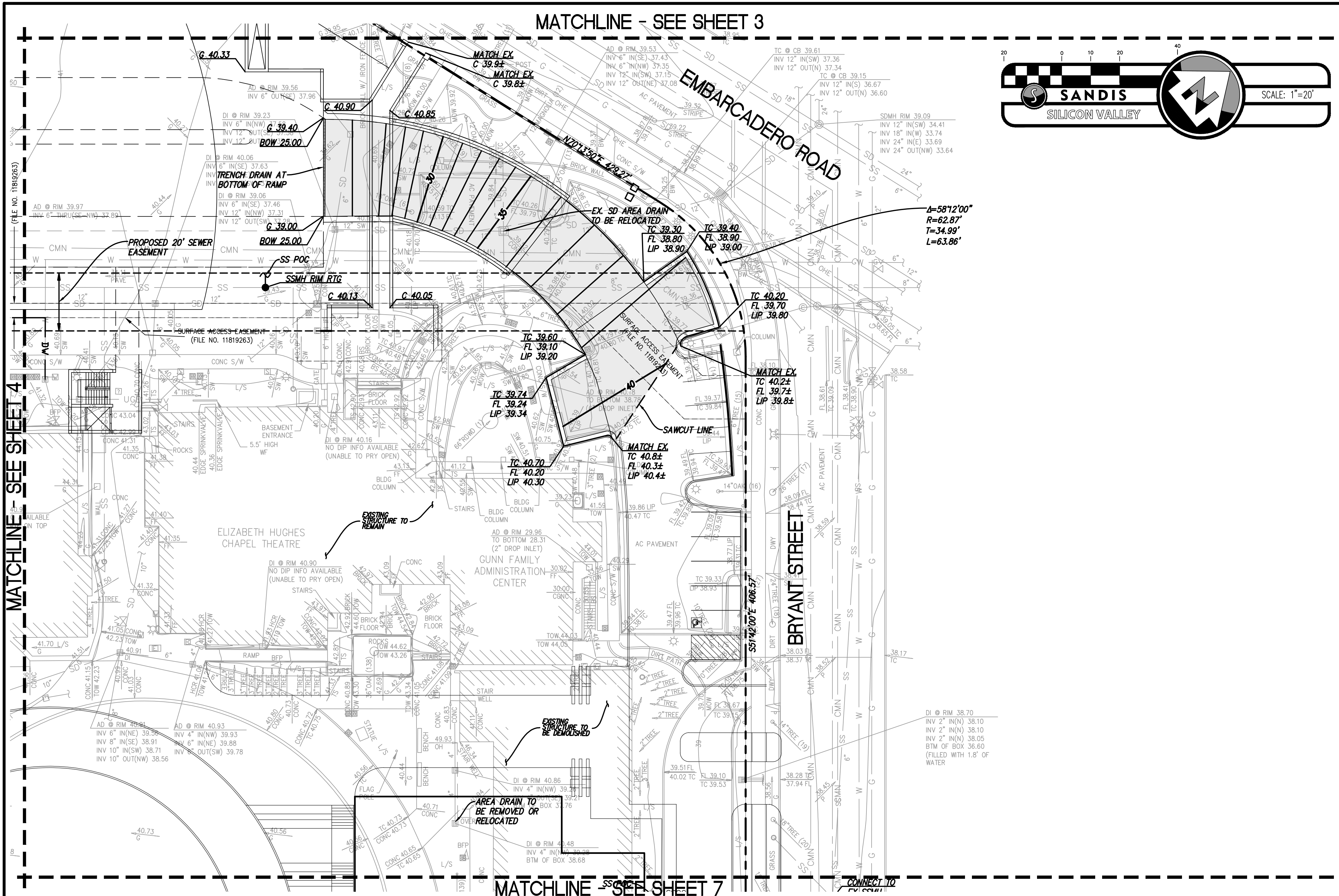
OF 7 SHEETS

MATCHLINE - SEE SHEET 3



NO PART OF THIS DOCUMENT MAY BE REPRODUCED IN ANY FORM INCLUDING PHOTOCOPY, RECORDING OR ANY INFORMATION RETRIEVABLE AND STORAGE SYSTEM, WITHOUT PERMISSION IN WRITING FROM SANDIS.

MATCHLINE - SEE SHEET 4



MATCHLINE - SEE SHEET 7



CIVIL ENGINEERS
SURVEYORS
PLANNERS

1700 Winchester Boulevard, Campbell, CA 95008 | P. 408.636.0900 | F. 408.636.0999 | www.sandis.net

SILICON VALLEY TRI-VALLEY CENTRAL VALLEY SACRAMENTO EAST BAY/SF

DATE	No.	REVISION/ISSUE	DATE	BY
06-23-2017				
SCALE		1" = 20'		
DRAWN BY:		LW		
APPROVED BY:		ND		
DRAWING NO.		216111		

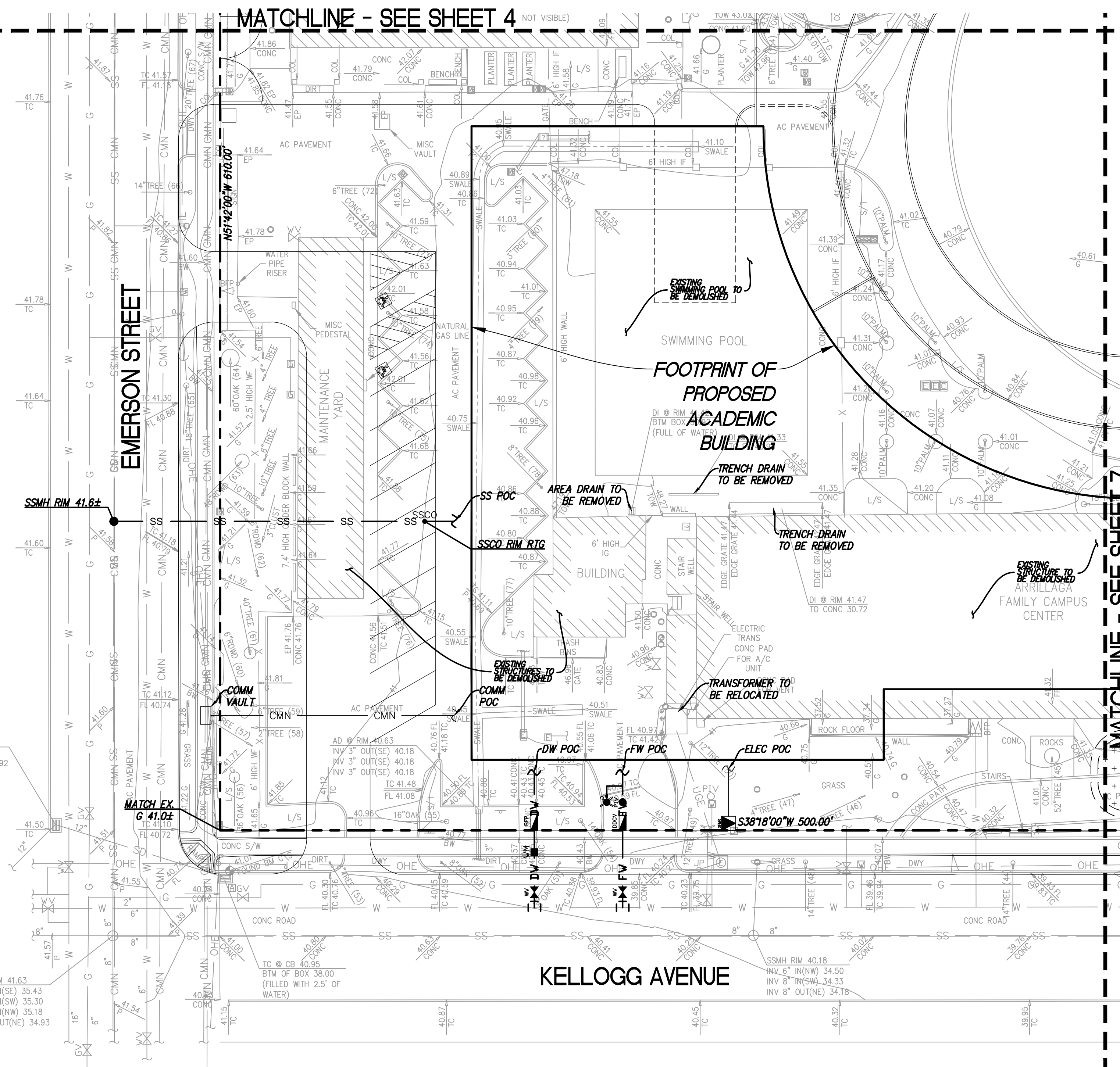
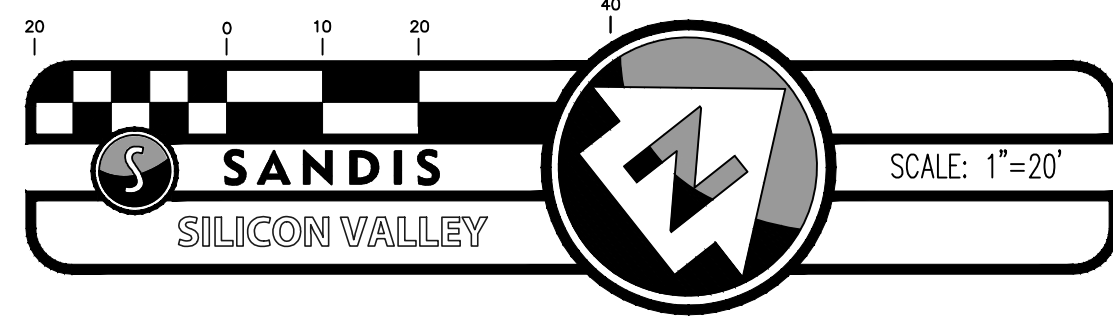
CASTILLEJA SCHOOL
PALO ALTO
CALIFORNIA

SHEET

5

OF 7 SHEETS

NO PART OF THIS DOCUMENT MAY BE REPRODUCED IN ANY FORM INCLUDING PHOTOCOPY, RECORDING OR ANY INFORMATION RETRIEVABLE AND STORAGE SYSTEM, WITHOUT PERMISSION IN WRITING FROM SANDIS.



MATCHLINE - SEE SHEET 4

MATCHLINE - SEE SHEET 7



**CIVIL ENGINEERS
SURVEYORS
PLANNERS**

1700 Winchester Boulevard, Campbell, CA 95008 | P. 408.636.0900 | F. 408.636.0999 | www.sandis.net

SILICON VALLEY TRI-VALLEY CENTRAL VALLEY SACRAMENTO EAST BAY/SF

DATE	No.	REVISION/ISSUE	DATE	BY
06-23-2017				
SCALE	1" = 20'			
DRAWN BY:	LW			
APPROVED BY:	ND			
DRAWING NO.	216111			

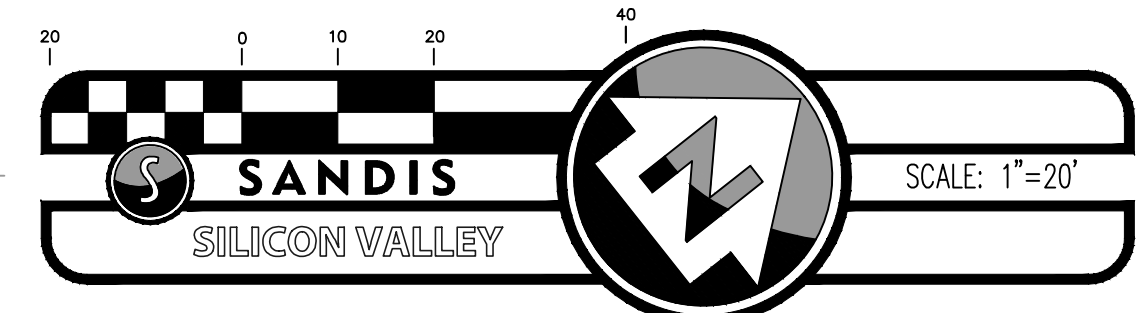
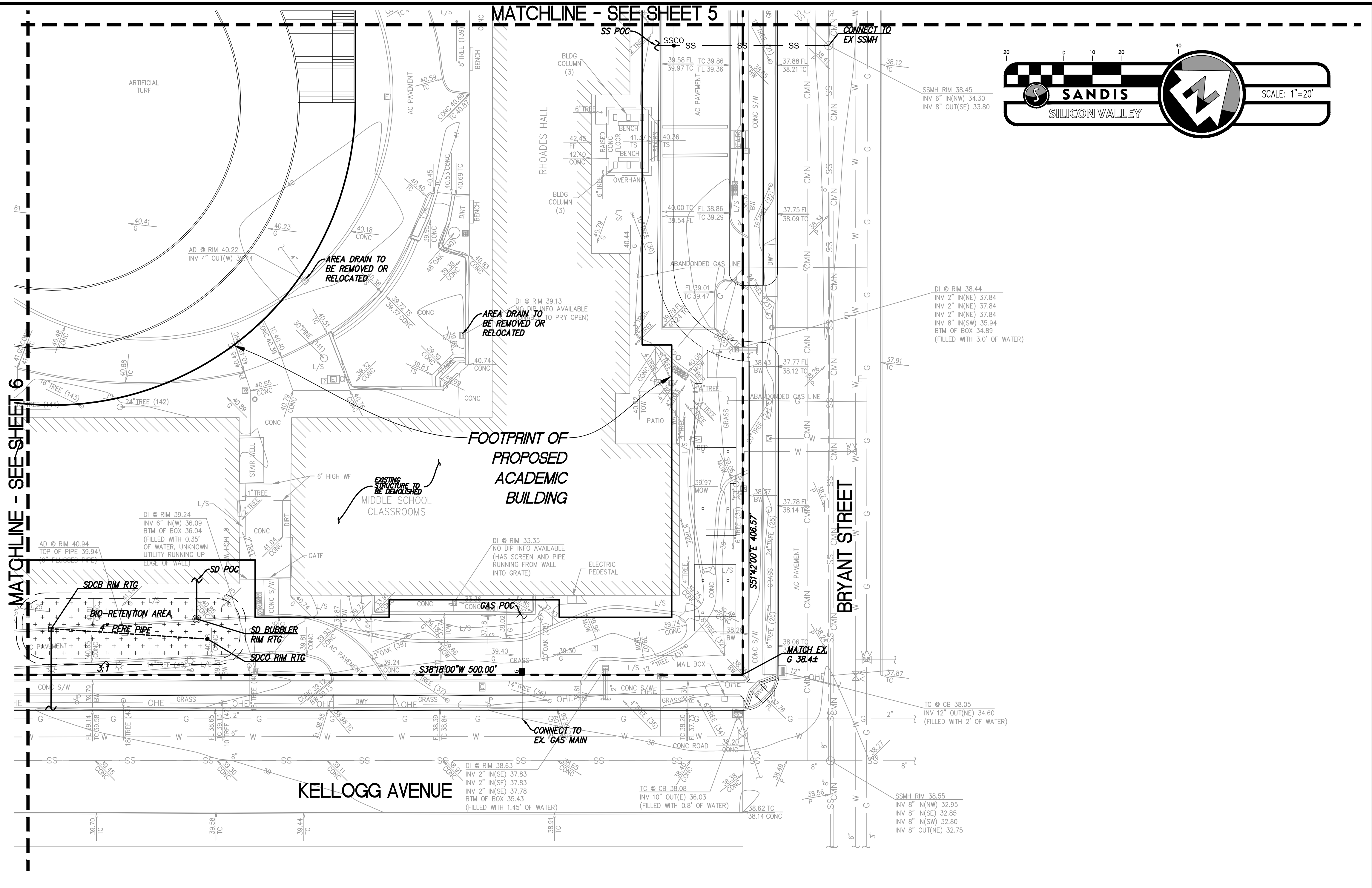
**CASTILLEJA SCHOOL
PALO ALTO
CALIFORNIA**

SHEET

6

OF 7 SHEETS

NO PART OF THIS DOCUMENT MAY BE REPRODUCED IN ANY FORM INCLUDING PHOTOCOPY, RECORDING OR ANY INFORMATION RETRIEVABLE AND STORAGE SYSTEM, WITHOUT PERMISSION IN WRITING FROM SANDIS.



SANDIS CIVIL ENGINEERS SURVEYORS PLANNERS
 1700 Winchester Boulevard, Campbell, CA 95008 | P. 408.636.0900 | F. 408.636.0999 | www.sandis.net
 SILICON VALLEY TRI-VALLEY CENTRAL VALLEY SACRAMENTO EAST BAY/SF

DATE	No.	REVISION/ISSUE	DATE	BY
06-23-2017				
SCALE: 1"= 20'				
DRAWN BY: LW				
APPROVED BY: ND				
DRAWING NO. 216111				

CASTILLEJA SCHOOL
PALO ALTO CALIFORNIA

SHEET **7**
 OF 7 SHEETS