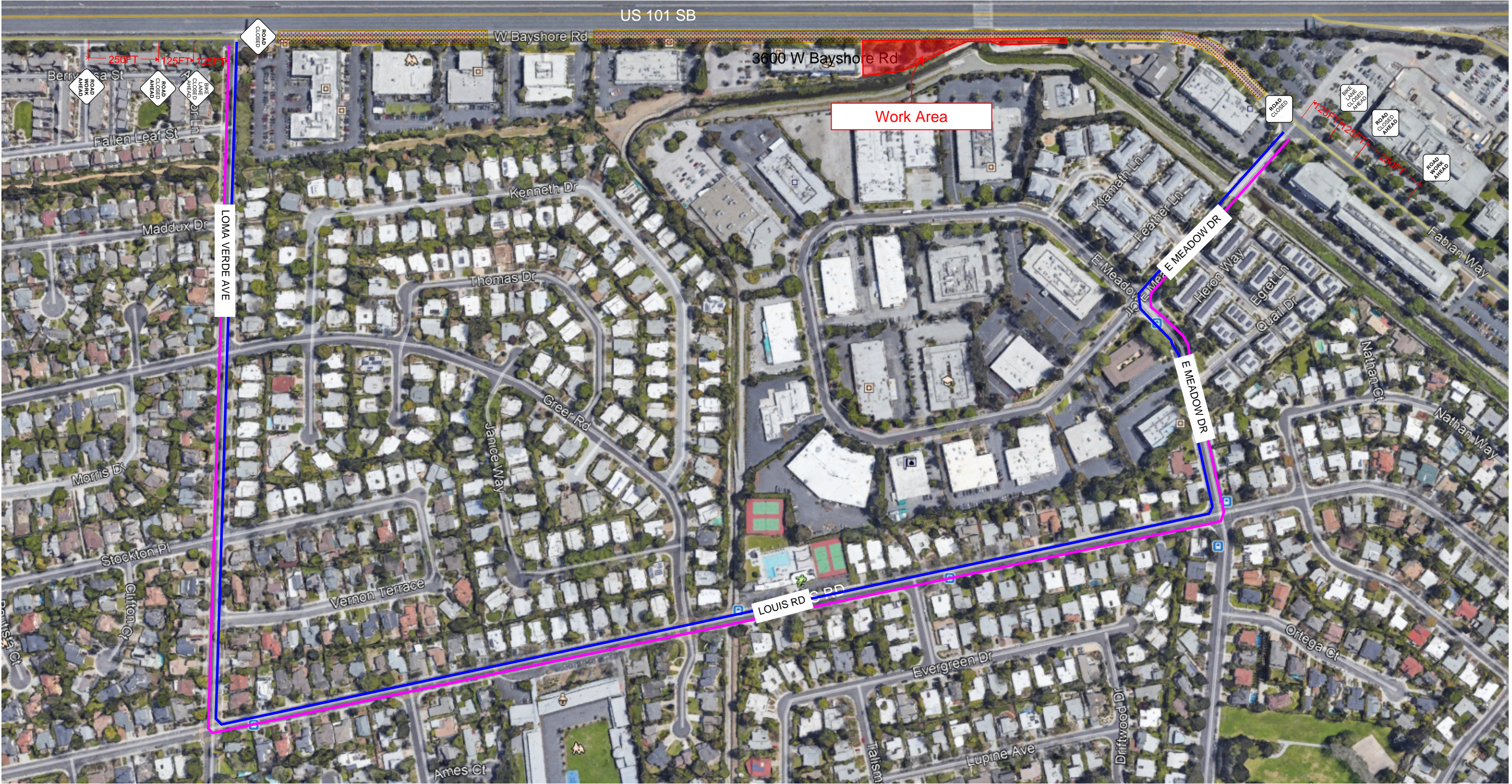


WEST BAYSHORE ROAD FULL CLOSURE DETOUR  
THURSDAY, FEBRUARY 11 AT 08:00PM - FRIDAY, FEBRUARY 12 AT 06:00AM



- NOTES:
- 1. TRAFFIC CONTROL PLAN TO FOLLOW CURRENT CA MUTCD.
  - 2. 28" RETROREFLECTIVE TRAFFIC CONES, RETROREFLECTIVE SIGNAGE AND FLASHING BEACONS REQUIRED FOR TRAFFIC CONTROL DURING HOURS OF DARKNESS.
  - 3. ROAD CLOSED SIGNS TO BE MOUNTED ON TYPE 3 BARRICADES
  - 4. CERTIFIED FLAGGERS WILL BE PRESENT ON THE GROUND TO ASSIST WITH DIRECTING LOCAL TRAFFIC THROUGH TO BUSINESSES, AS NEEDED.
  - 5. WEST BAYSHORE ROAD SPEED LIMIT 35MPH.
  - 6. THIS TRAFFIC PLAN IS INTENDED TO BE PICKED UP PRIOR TO END OF SHIFT.
  - 7. WORK ACTIVITIES MAY INCLUDE SETUP/RECONFIGURATION/REMOVAL OF TEMPORARY TRAFFIC SIGNAL, STEEL BRIDGE ERECTION, K-RAIL.
  - 8. UTILIZE DETOUR IN PROJECT PLANS SHEET CS-4



WORK ZONE  
28" CONES

NB DETOUR  
SB DETOUR



CERTIFIED FLAGGER