



South San Francisco Bay Shoreline Phase II Feasibility Study

Palo Alto Sea Level Rise Adaptation Virtual Public Meeting - Wednesday, September 9, 2020

Project website: www.valleywater.org/shoreline

Outline

- South San Francisco Bay Shoreline Project Background
 - Relationship to other projects in the region
- South San Francisco Bay Shoreline Phase II Feasibility Study Overview and Progress
 - Study Partners and objectives
 - Study Process and Milestones
 - Environmental Review and Permitting
 - Upcoming Public Meetings and Study Mailing List

South San Francisco Bay Shoreline (Shoreline) Project Background

Exploring options to protect Santa Clara County from coastal flooding and sea level rise as well as identifying opportunities for ecosystem restoration and expanded public access to San Francisco Bay.

Start

2005-2015

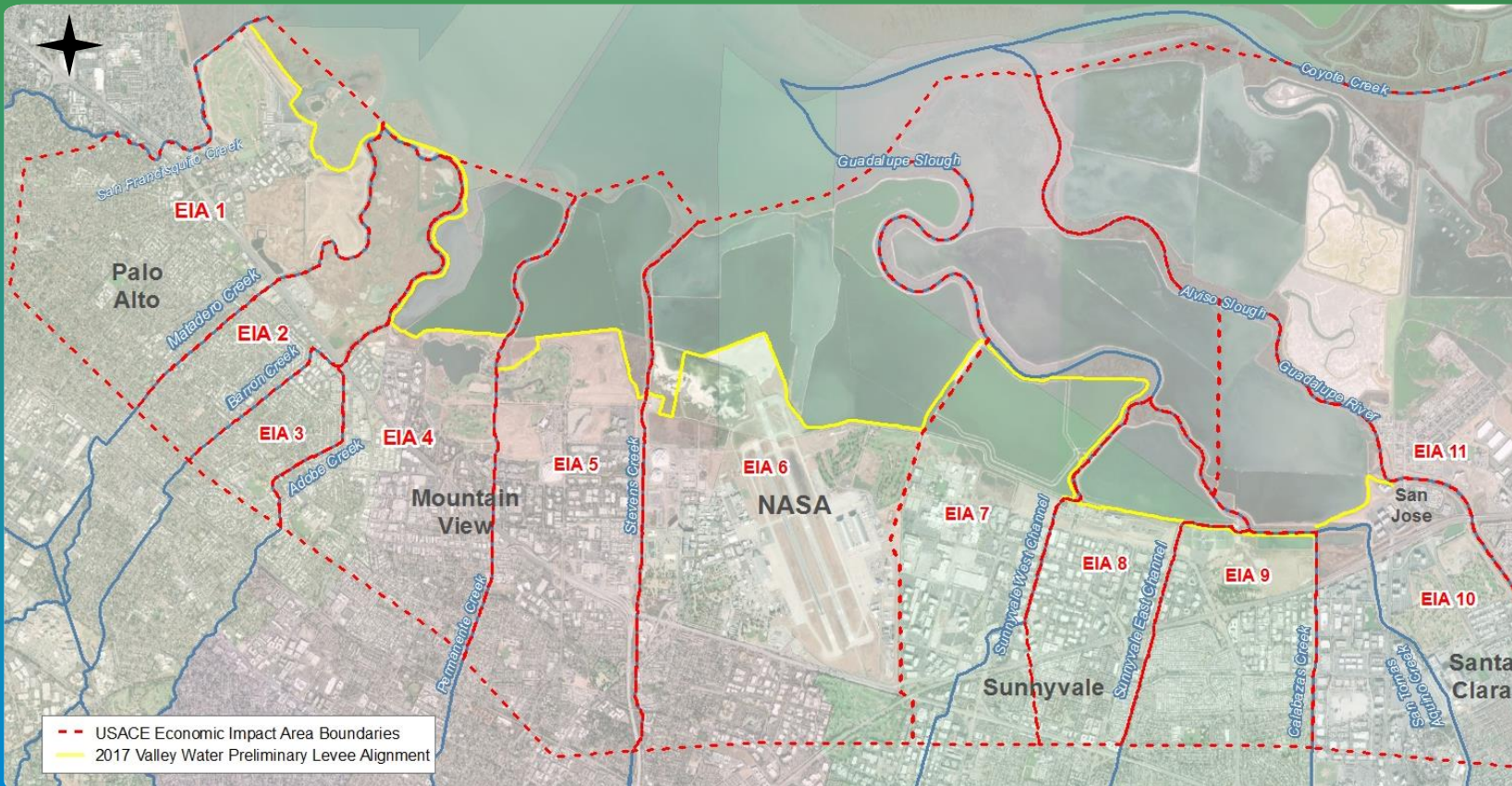
Shoreline Phase I Feasibility Study

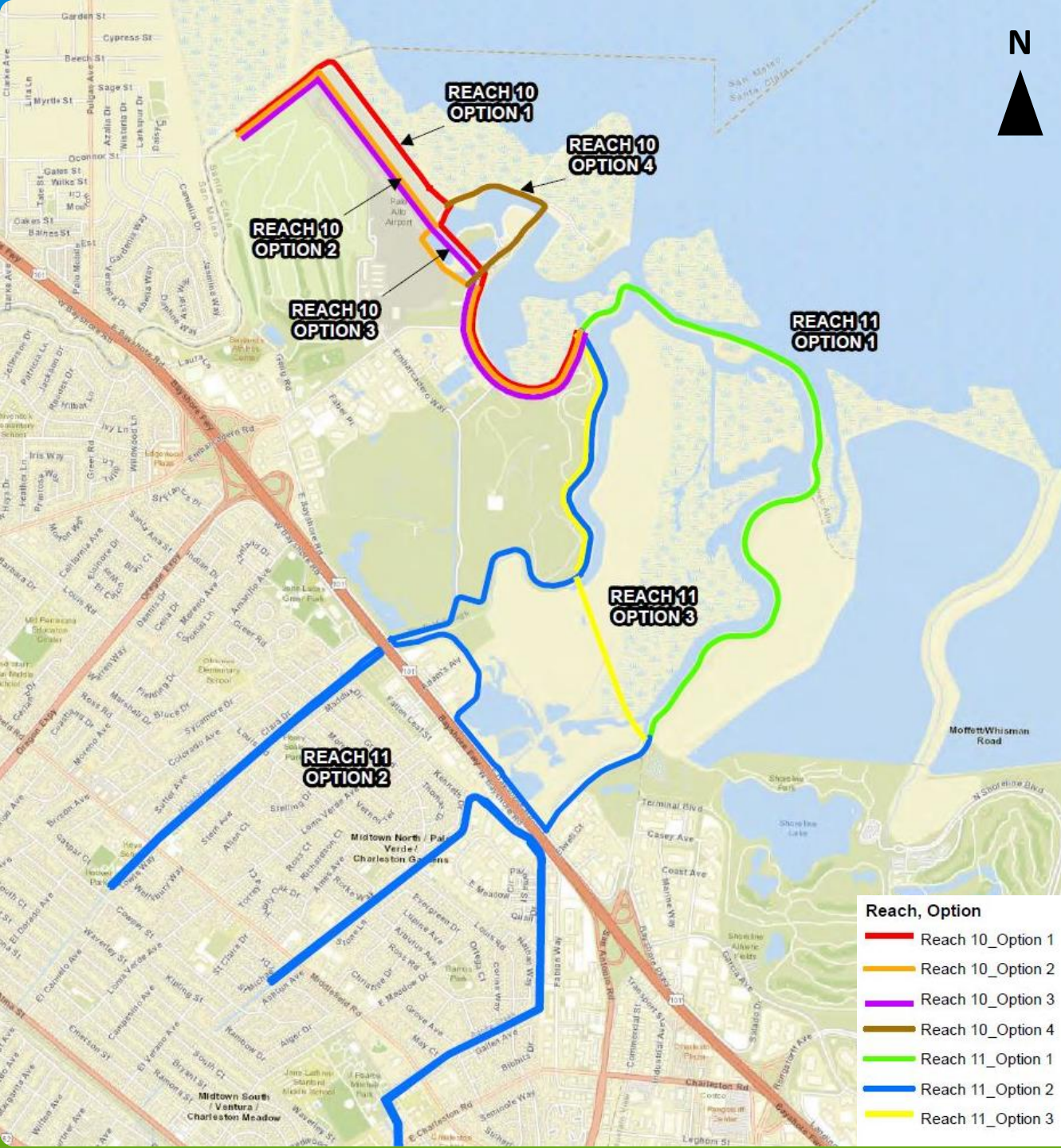
- Project Area – EIA 11 North San José
- Study Partners – U.S. Army Corps of Engineers, State Coastal Conservancy, Valley Water
- Project aims to start construction in 2021.

2014-2017

Valley Water Preliminary Feasibility Report

- Project Area – EIAs 1-10
- Identified preliminary water surface elevations for a 1% coastal flood & preliminary coastal levee alignment with key stakeholder input.





June 2019

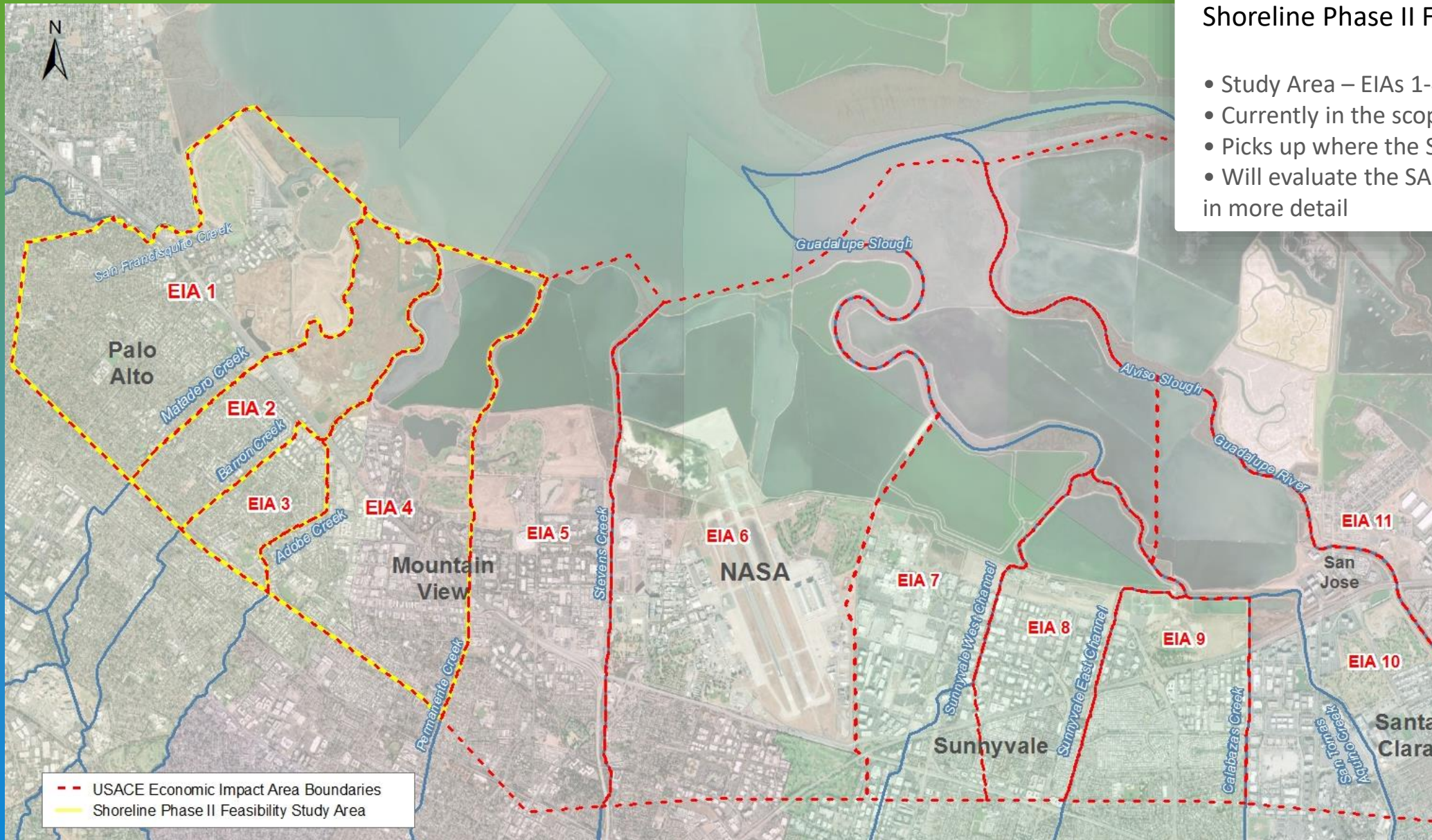
Strategy to Advance Flood Protection, Ecosystems, and Recreation along San Francisco Bay (SAFER Bay)
Public Release of Draft Feasibility Report for the Palo Alto Area

- Prepared by a consultant on behalf of the San Francisquito Creek Joint Powers Authority (SFCJPA)
- Similar to Valley Water's 2014 Preliminary Feasibility Report, the SAFER Report identified preliminary levee alignments along the Palo Alto shoreline and baylands that would protect the community from coastal flooding and sea level rise.
- Recommended three alternatives – the best low cost, environmental restoration, and recreation alternatives.

Sept 2019 - Today

Shoreline Phase II Feasibility Study

- Study Area – EIAs 1-4
- Currently in the scoping phase
- Picks up where the SAFER Bay study left off
- Will evaluate the SAFER levee alignments in more detail





Graphic does not reflect planning efforts such as the Baylands Comprehensive Conservation Plan, or the Sea Level Rise Adaptation Plan.

Vicinity Project Map

Shoreline Phase II Feasibility Study Partners

7

Study Lead



**US Army Corps
of Engineers®**

Study Lead

The federal lead agency is the USACE San Francisco District.

Non-Federal Sponsors



Study Non-Federal Sponsors

Valley Water and the California State Coastal Conservancy are Non-Federal Sponsors of the Feasibility Study. Sponsors pay 50% of the study cost, while USACE pays for the other 50%.

Local Partner



Study Partner

The City of Palo Alto is a vital local partner for this study.

STUDY OBJECTIVES

Coastal Storm Risk Management



01.

Reduce risk to human life, health, and safety, caused by coastal flooding and sea level rise along the South Bay shoreline.

02.

Reduce economic damage from coastal flooding to businesses and communities, including critical infrastructure.

03.

Reduce flood risks to the extent practicable in a manner that maintains or improves beneficial ecological functions of baylands by increasing the number of natural and nature-based features implemented.



STUDY OBJECTIVES

Ecosystem Restoration

01.

Restore ecological function and habitat quantity, quality, and connectivity in the study area, for native plant and animal species, including special status species.

02.

Reduce risk to baylands from coastal flooding and sea level rise.

03.

To the extent practicable, implement measures that expand the opportunity for shoreline access to comply with local agency regulations.



Coastal Storm Risk Management solutions should not affect critical infrastructure or facilities or increase flood risk.



Design Coastal Storm Risk Management solution to avoid impacts to restoration projects in the bay.



Do not reduce recreational access opportunities and ensure that any proposed new recreational features do not preclude achievement of project objectives.

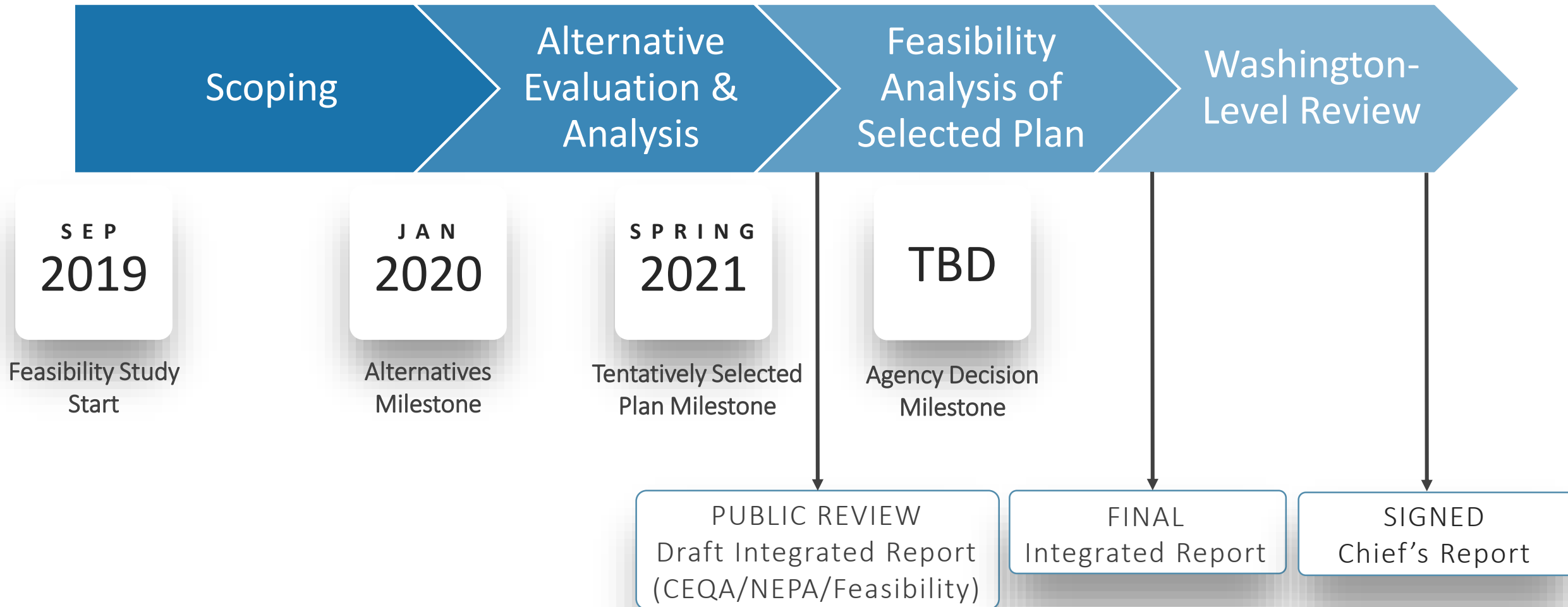
PLANNING

Constraints

The levee alignment and ecosystem restoration alternatives will be formulated within the listed constraints.

USACE Feasibility Study Process

ROAD MAP OF KEY DECISION AND PRODUCT MILESTONES



Environmental Review & Permitting

- Joint NEPA/CEQA virtual public scoping meeting planned for this fall
- Resource Agency Working Group:



**For more information or
to sign up for email updates:**

www.valleywater.org/shoreline

Roxanne Grillo, Project Manager
RGrillo@valleywater.org

Tony Mercado, Neighborhood Liaison
TMercado@valleywater.org



QUESTIONS





Valley Water

Clean Water • Healthy Environment • Flood Protection