



2022 CALIFORNIA CODE WILL APPLY TO THIS PROJECT

- SIGN TYPE A - PRIMARY MONUMENT
- Fabricate and install (x1) internally illuminated primary monument sign, concrete footing. Connecting to power source ( BY OTHERS) with dedicated 20amp circuit, photocell, and timer.
- SIGN TYPE B - CANOPY ADDRESS ID
- Fabricate and install (x1) internally illuminated canopy address id, wall mounting. Connecting to power source ( BY OTHERS) with dedicated 20amp circuit, photocell, and timer.
- SIGN TYPE C - PROPERTY ID
- Fabricate and install (x1) internally illuminated property id, wall mounting. Connecting to power source ( BY OTHERS) with dedicated 20amp circuit, photocell, and timer.
- SIGN TYPE D - OVERHEAD PARKING ID
- Fabricate and install (x1) fco lettering, and painted existing wall overhead parking id. Applied upward light, wall mounting. Connecting to power source ( BY OTHERS) with dedicated 20amp circuit, photocell, and timer.
- SIGN TYPE E - BLADE PARKING ID
- Fabricate and install (x1) internally illuminated parking monument it, concrete footing. Connecting to power source ( BY OTHERS) with dedicated 20amp circuit, photocell, and timer.

525

UNIVERSITY

PROJECT:

525 UNIVERSITY AVE, SUITE 200  
PALO ALTO, CA 94301

EXTERIOR PACKAGE

02/13/2024

Design + Build.



408.292.1600  
2464 De La Cruz Blvd., Santa Clara, CA 95050  
[www.corporatesigns.com](http://www.corporatesigns.com)  
CONTRACTOR'S LIC# 765078  
CLASS C45-ELECTRICAL SIGN CONTRACTOR

TABLE OF CONTENTS:

1. CALCULATION

3

2. SIGN ELEMENTS

4

3. SIGN HIERARCHY

5

4. LOCATION PLAN

6

5. SIGN TYPE A - PRIMARY MONUMENT ID

7

6. SIGN TYPE B - CANOPY ADDRESS ID

9

7. SIGN TYPE C - PROPERTY ID

11

8. SIGN TYPE D - OVERHEAD PARKING ID

14

9. SIGN TYPE E - BLADE PARKING ID

17

10. EXISTING SIGN

23

11. PARCEL MAP

24



408.292.1600  
2464 De La Cruz Blvd., Santa Clara, CA 95050  
[www.corporatesigns.com](http://www.corporatesigns.com)  
CONTRACTOR'S LIC# 765078  
CLASS C45-ELECTRICAL SIGN CONTRACTOR

CLIENT  
525 UNIVERSITY

PROJECT  
**525**  
UNIVERSITY  
  
525 UNIVERSITY AVE, SUITE 200  
PALO ALTO, CA 94301

DRAWING / REVISION DATE  
06/29/23 - YY 02/09/24 - YY  
07/05/23 - YY 02/13/24 - YY  
07/11/23 - YY  
07/17/23 - YY  
07/28/23 - YY  
01/25/24 - YY  
02/06/24 - YY

FILE NAME / LOCATION  
Orchard Commercial\525  
University Ave\\_LUX\Drawings\  
1512 525 University Exterior.cdr

ORDER NUMBER  
**1512**

SIGN TYPE

SHEET TITLE  
TABLE OF CONTENTS

All drawings as well as creative content are the property of Corporate Sign Systems. You must have written consent by a Corporate Sign Systems' Officer prior to disclosure, reproduction, or distribution outside of your organization.

PAGE NUMBER  
**2**

ALLOWABLE SIGNAGE - CALCULATIONS

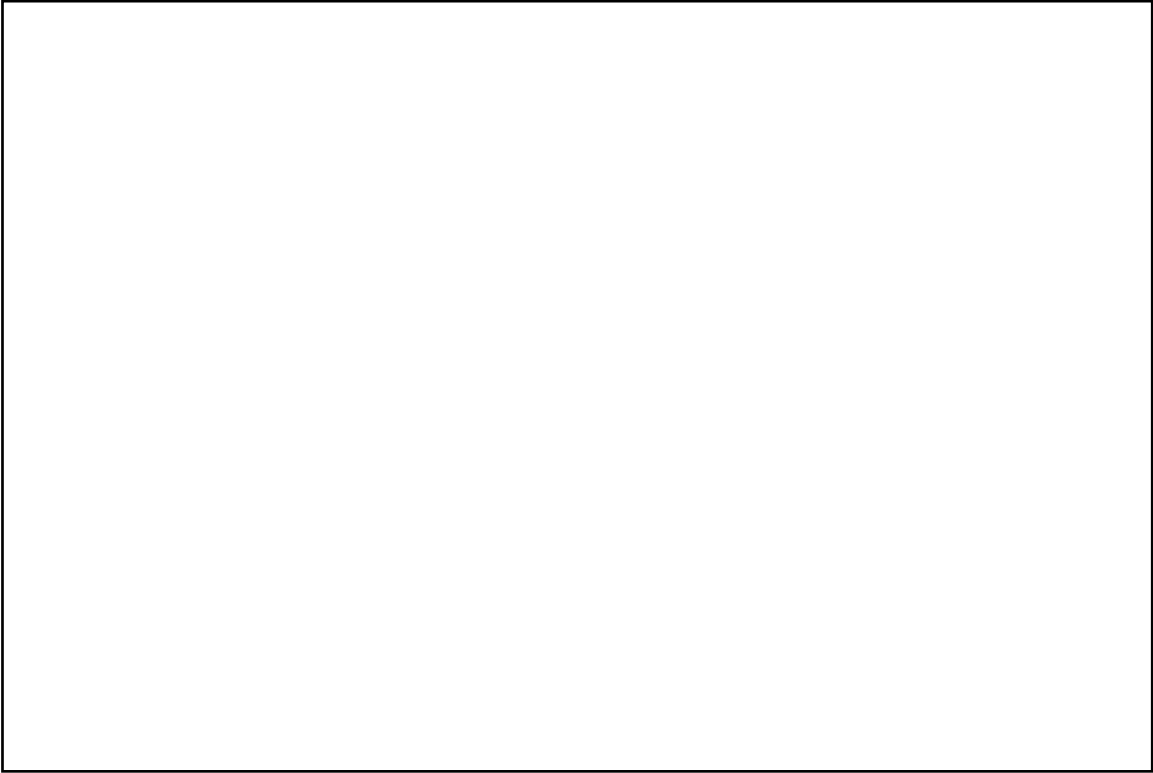
TOTAL SIGN AREA CALCULATIONS

Total Sign Area Calculations in SF

525 UNIVERSITY AVENUE

LOT FRONTAGE	MAXIMUM SIGN AREA	SIGN TYPE	PROPOSED SF	x QTY PROPOSED	x QTY ALLOWED	SIGN AREA ALLOWED	= TOTAL SIGN AREA USED
FT	SF	C. PROPERTY ID (WALL SIGN)	58.5 SF	1	ANY	150 SF (TOTAL AGGREGATE OF ALL WALL SIGNS)	58.5 SF
393 FT		D. OVERHEAD PARKING ID (WALL SIGN)	22.95 SF	1	ANY	150 SF (TOTAL AGGREGATE OF ALL WALL SIGNS)	22.95 SF
						SUBTOTAL =	81.45 SF

SIGN TYPE	PROPOSED SF	x QTY PROPOSED	x QTY ALLOWED	SIGN AREA ALLOWED	= TOTAL SIGN AREA USED
A. PRIMARY MONUMENT ID (DIRECTORY)	20 SF	1	2	REPLACING EXISTING LIKE-FOR-LIKE	20 SF
E. PARKING MONUMENT ID	7.36 SF	1	N/A	N/A	7.36 SF
				SUBTOTAL =	27.36 SF
				TOTAL =	108.81 SF



408.292.1600  
2464 De La Cruz Blvd., Santa Clara, CA 95050  
www.corporatesigns.com  
CONTRACTOR'S LIC# 765078  
CLASS C45-ELECTRICAL SIGN CONTRACTOR

CLIENT  
525 UNIVERSITY

PROJECT  
**525**  
UNIVERSITY

525 UNIVERSITY AVE, SUITE 200  
PALO ALTO, CA 94301

DRAWING / REVISION DATE

06/29/23 - YY 02/09/24 - YY  
07/05/23 - YY 02/13/24 - YY  
07/11/23 - YY  
07/17/23 - YY  
07/28/23 - YY  
01/25/24 - YY  
02/06/24 - YY

FILE NAME / LOCATION

Orchard Commercial\525  
University Ave\\_LUX\Drawings\  
1512 525 University Exterior.cdr

ORDER NUMBER

1512

SIGN TYPE



SHEET TITLE  
CALCULATIONS

All drawings as well as creative content are the property of Corporate Sign Systems. You must have written consent by a Corporate Sign Systems' Officer prior to disclosure, reproduction, or distribution outside of your organization.

PAGE NUMBER

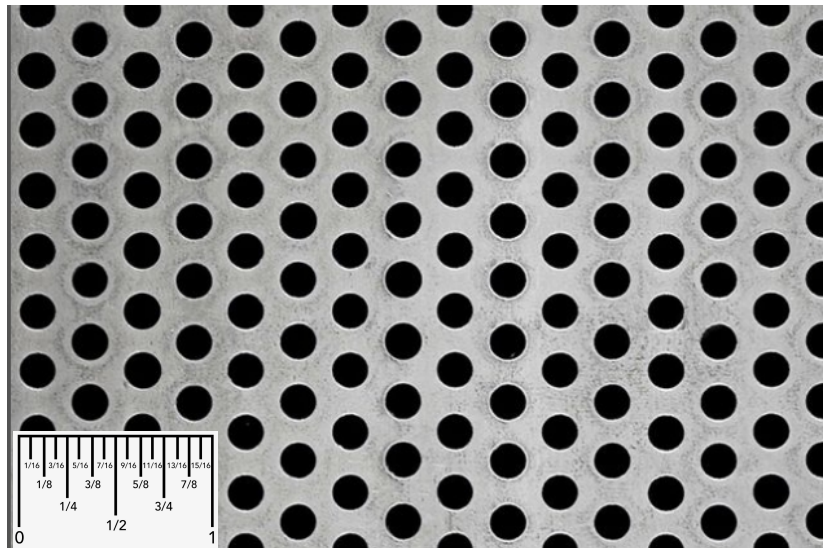
3

BRAND ARTWORK

525

UNIVERSITY

PATTERN



3/16" ROUND ON 5/16" STAGGER CENTERS  
1/8" BAR, 11.95 HPSI, 33% OPEN AREA  
ALUMINUM ALLOY 3003-H14

FONTS

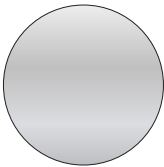
Roboto Condensed

ABCDEFGHIJKLMNOPQRSTUVWXYZ  
abcdefghijklmnopqrstuvwxyz  
1234567890

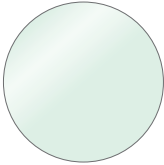
Roboto Condensed Bold

ABCDEFGHIJKLMNOPQRSTUVWXYZ  
abcdefghijklmnopqrstuvwxyz  
1234567890

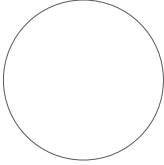
MATERIAL AND COLOR SCHEDULE



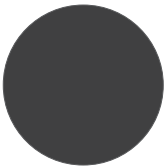
M1aluminum



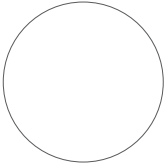
M2acrylic



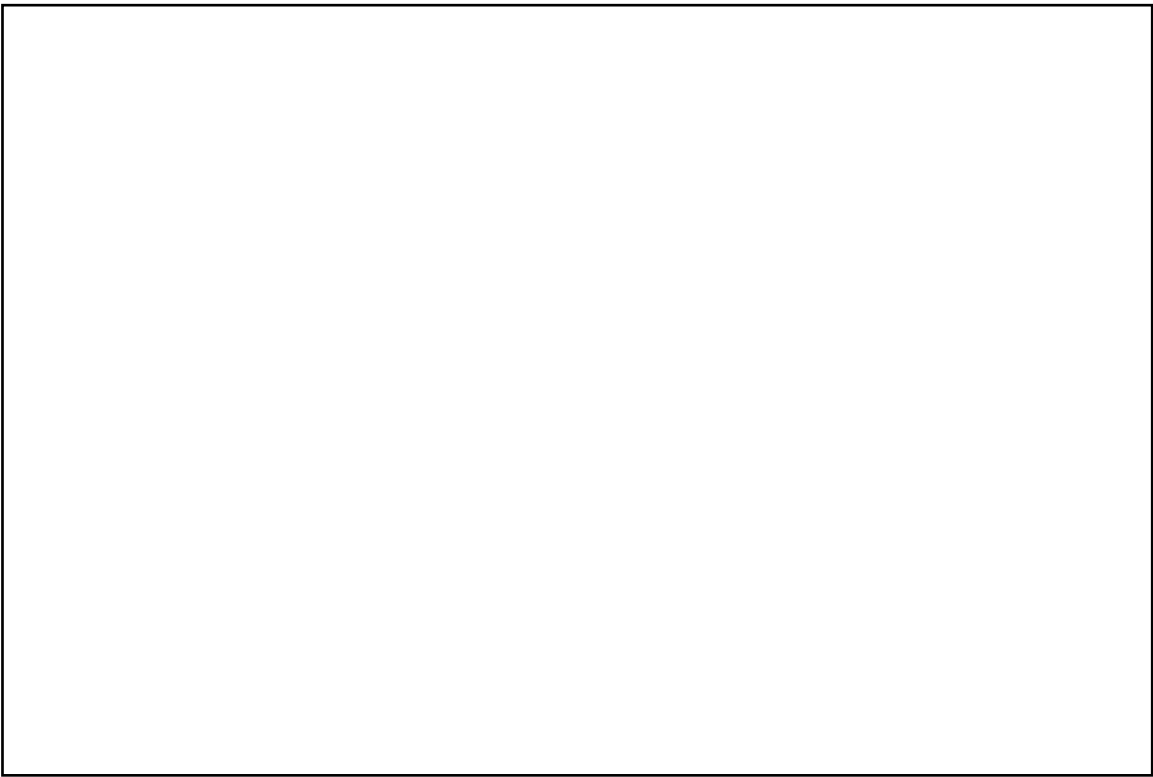
M3vinyl



C1Black Umber  
MAP30116



C2White Wonder  
MAP 32071



CLIENT  
525 UNIVERSITY

PROJECT  
525  
UNIVERSITY

525 UNIVERSITY AVE, SUITE 200  
PALO ALTO, CA 94301

DRAWING / REVISION DATE  
06/29/23 - YY 02/09/24 - YY  
07/05/23 - YY 02/13/24 - YY  
07/11/23 - YY  
07/17/23 - YY  
07/28/23 - YY  
01/25/24 - YY  
02/06/24 - YY

FILE NAME / LOCATION  
Orchard Commercial\525  
University Ave\\_LUX\Drawings\  
1512 525 University Exterior.cdr

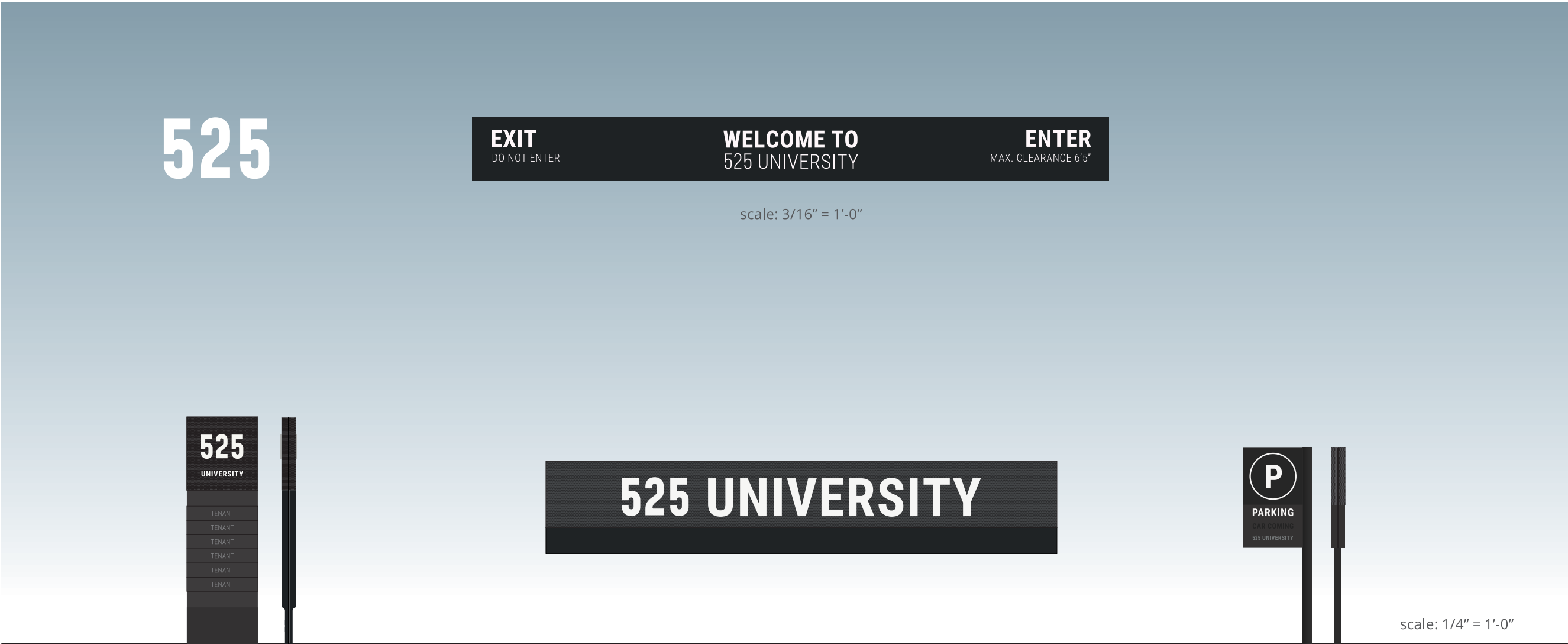
ORDER NUMBER  
1512

SIGN TYPE

SHEET TITLE  
SIGN ELEMENTS

All drawings as well as creative content are the property of Corporate Sign Systems. You must have written consent by a Corporate Sign Systems' Officer prior to disclosure, reproduction, or distribution outside of your organization.

PAGE NUMBER  
4



**A** PRIMARY MONUMENT  
**B** ADDRESS ID

**C** PROPERTY ID  
**D** OVERHEAD PARKING

**E** PARKING MONUMENT ID

CLIENT  
525 UNIVERSITY

PROJECT  
**525**  
UNIVERSITY

525 UNIVERSITY AVE, SUITE 200  
PALO ALTO, CA 94301

DRAWING / REVISION DATE

06/29/23 - YY 02/09/24 - YY  
07/05/23 - YY 02/13/24 - YY  
07/11/23 - YY  
07/17/23 - YY  
07/28/23 - YY  
01/25/24 - YY  
02/06/24 - YY

FILE NAME / LOCATION

Orchard Commercial\525  
University Ave\\_LUX\Drawings\  
1512 525 University Exterior.cdr

ORDER NUMBER

1512

SIGN TYPE



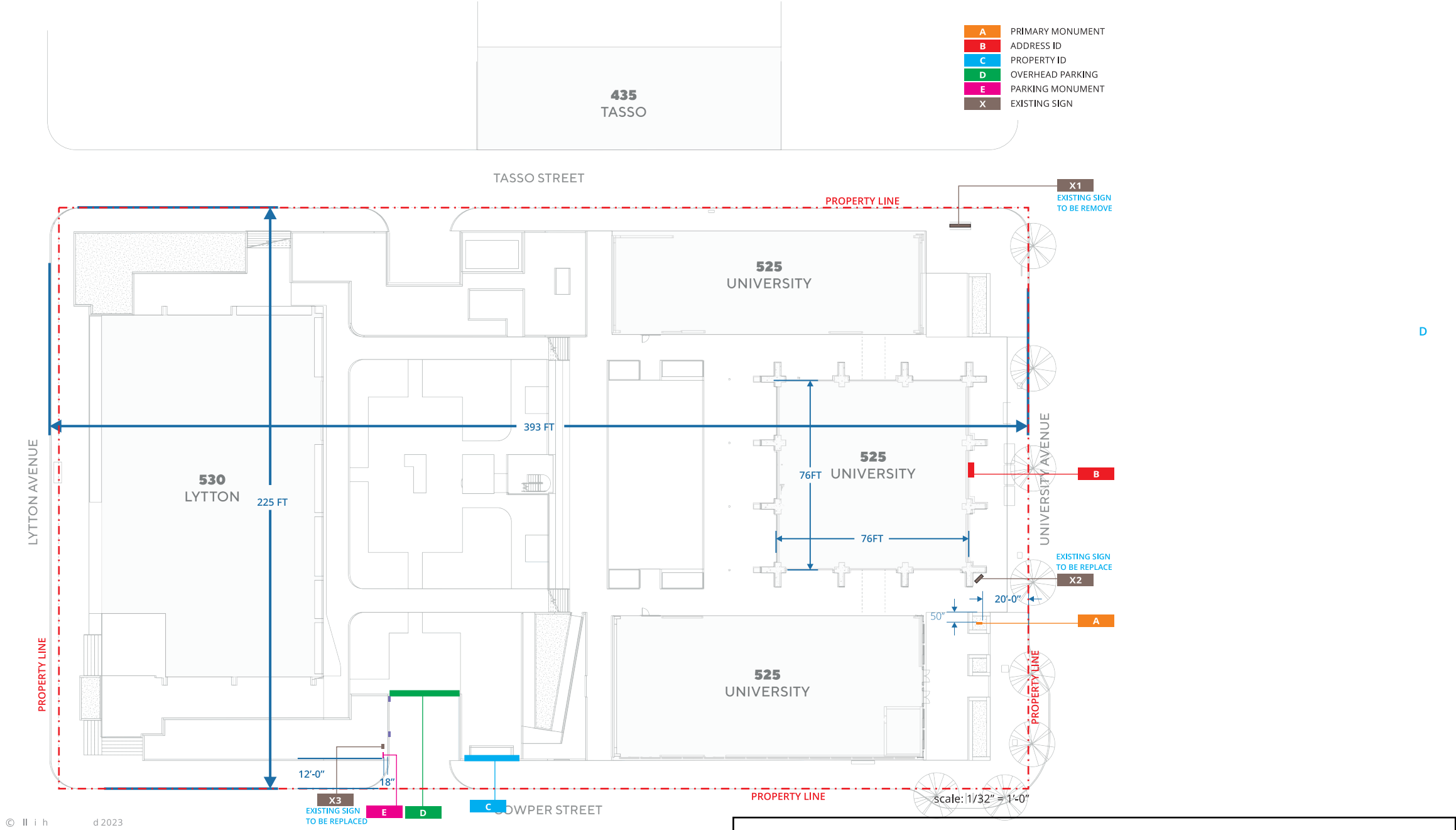
SHEET TITLE

SIGN HIERARCHY

All drawings as well as creative content are the property of Corporate Sign Systems. You must have written consent by a Corporate Sign Systems' Officer prior to disclosure, reproduction, or distribution outside of your organization.

PAGE NUMBER

5



CLIENT  
525 UNIVERSITY

PROJECT  
**525**  
UNIVERSITY

525 UNIVERSITY AVE, SUITE 200  
PALO ALTO, CA 94301

DRAWING / REVISION DATE

06/29/23 - YY 02/09/24 - YY  
07/05/23 - YY 02/13/24 - YY  
07/11/23 - YY  
07/17/23 - YY  
07/28/23 - YY  
01/25/24 - YY  
02/06/24 - YY

FILE NAME / LOCATION

Orchard Commercial\525  
University Ave\\_LUX\Drawings\  
1512 525 University Exterior.cdr

ORDER NUMBER

1512

SIGN TYPE



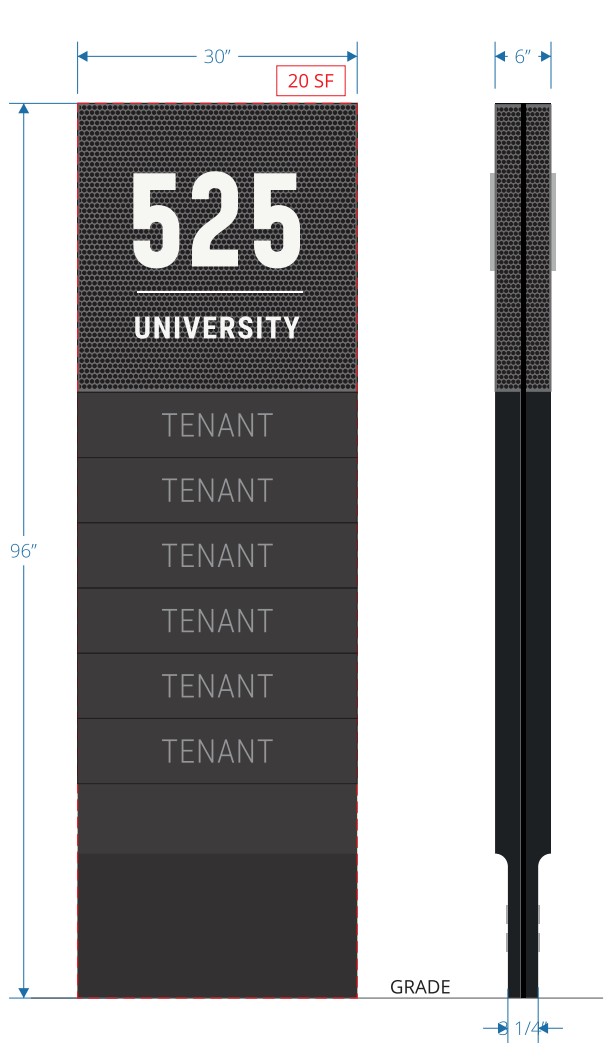
SHEET TITLE

LOCATION PLAN

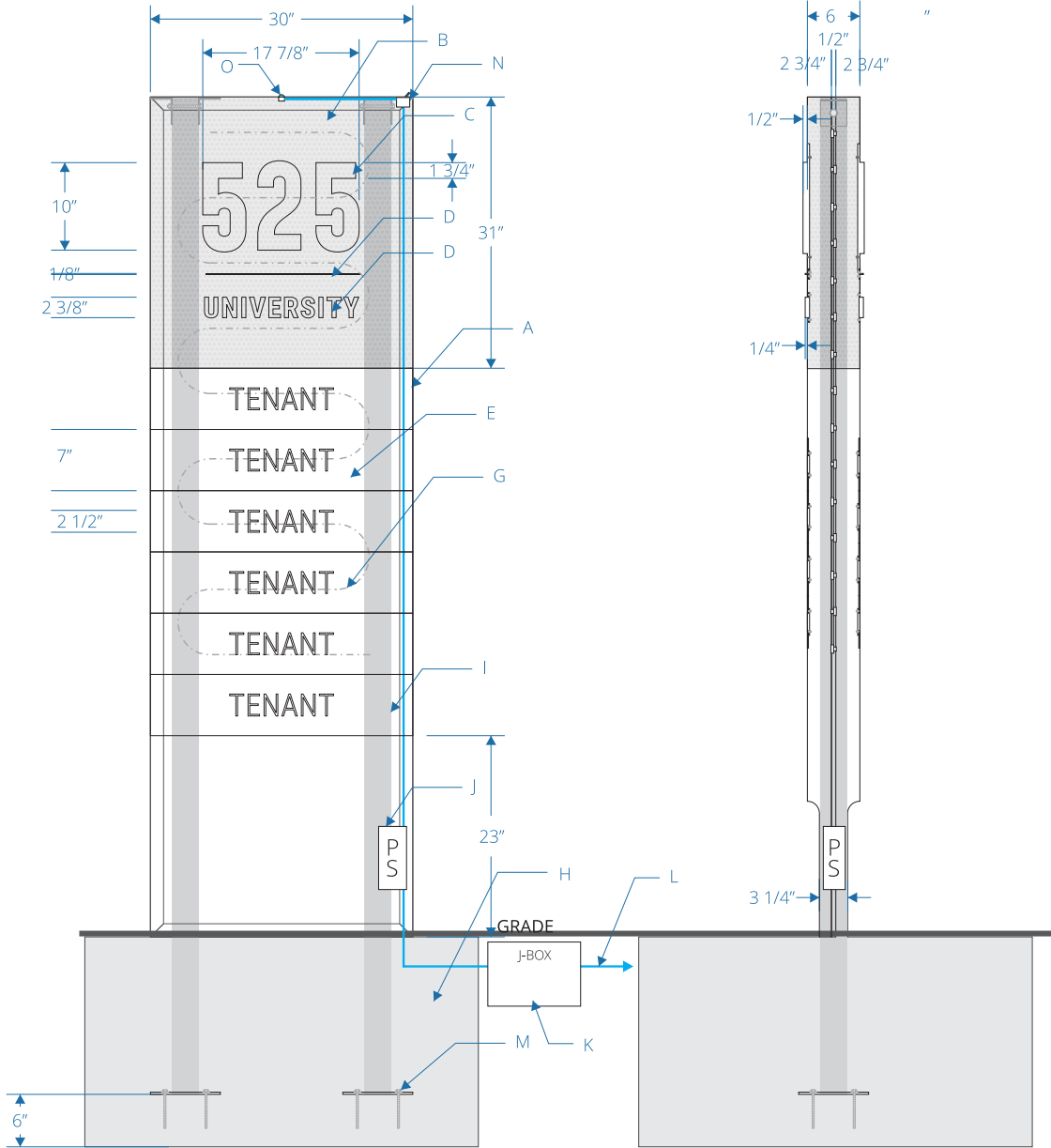
All drawings as well as creative content are the property of Corporate Sign Systems. You must have written consent by a Corporate Sign Systems' Officer prior to disclosure, reproduction, or distribution outside of your organization.

PAGE NUMBER

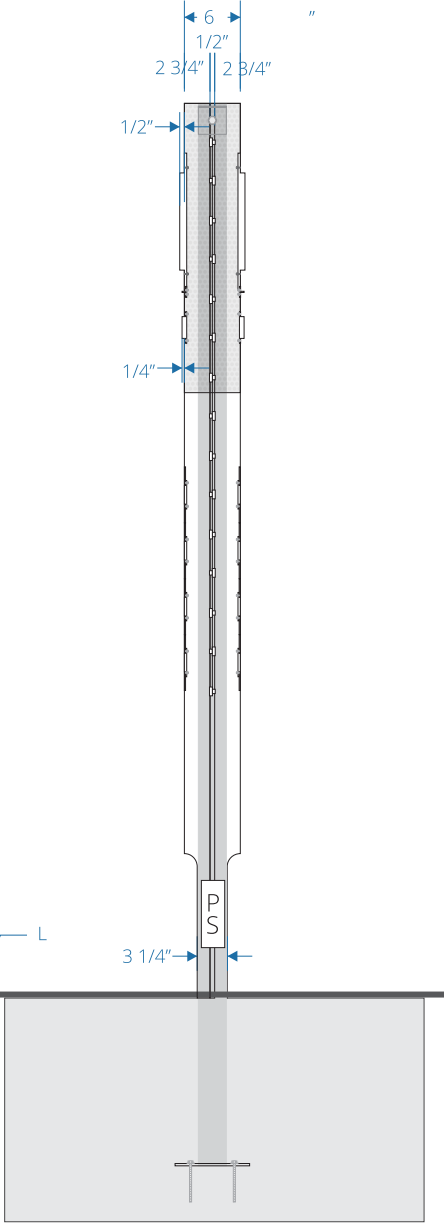
6



1 FRONT VIEW  
scale: 3/4" = 1'-0"



2 FRONT VIEW - DETAIL  
scale: 3/4" = 1'-0"



3 SIDE VIEW - DETAIL  
scale: 3/4" = 1'-0"

DESCRIPTION	QTY: 1
A. 96"h x 30"w x 6"d -3 1/4"d fabricated aluminum cabinet, painted C1 black umber	
B. 31"h x 30"w x 6"d fabricated perforated panel on the top portion of sign cabinet	
C. 10"h x 1/2" thick push thru acrylic address number id, painted C2 white wonder	
D. 2 3/8"h x 1/4" thick push thru acrylic lettering and 1/8" rule line, painted C2 white wonder	
E. 7"h x 30"w removable tenant panel, painted C1 black umber; with 2 1/2"h x 1/4"d flush face acrylic push thru tenant name, painted C2 white wonder	
G. LEDs	
H. concrete footing (see engineering page for detail)	
I. 3" x 3" aluminum tube post with 1/2"dia galvanized steel thru bolt	
J. 110v-277v ul listed power supply	
K. <a href="#">christy box by OTHERS</a>	
L. <a href="#">primary line 110-277v on dedicated circuit 20AMP by others</a>	
M. <a href="#">1/4" thick aluminum plate and expansion bolt mounted with waterproofing by bothers</a>	
N. disconnect switch box	
O. photocell	

CLIENT  
525 UNIVERSITY

PROJECT  
**525**  
UNIVERSITY

525 UNIVERSITY AVE, SUITE 200  
PALO ALTO, CA 94301

DRAWING / REVISION DATE  
06/29/23 - YY 02/09/24 - YY  
07/05/23 - YY 02/13/24 - YY  
07/11/23 - YY  
07/17/23 - YY  
07/28/23 - YY  
01/25/24 - YY  
02/06/24 - YY

FILE NAME / LOCATION  
Orchard Commercial\525  
University Ave\\_LUX\Drawings\  
1512 525 University Exterior.cdr

ORDER NUMBER  
**1512**

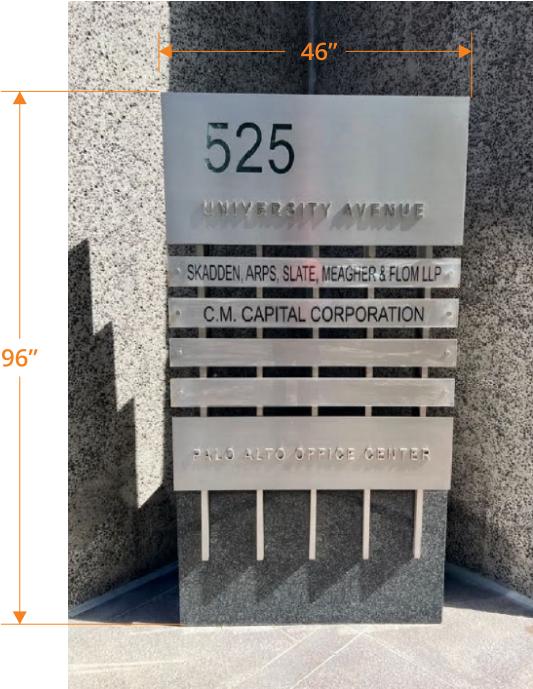
SIGN TYPE  
**A**

SHEET TITLE  
PRIMARY MONUMENT

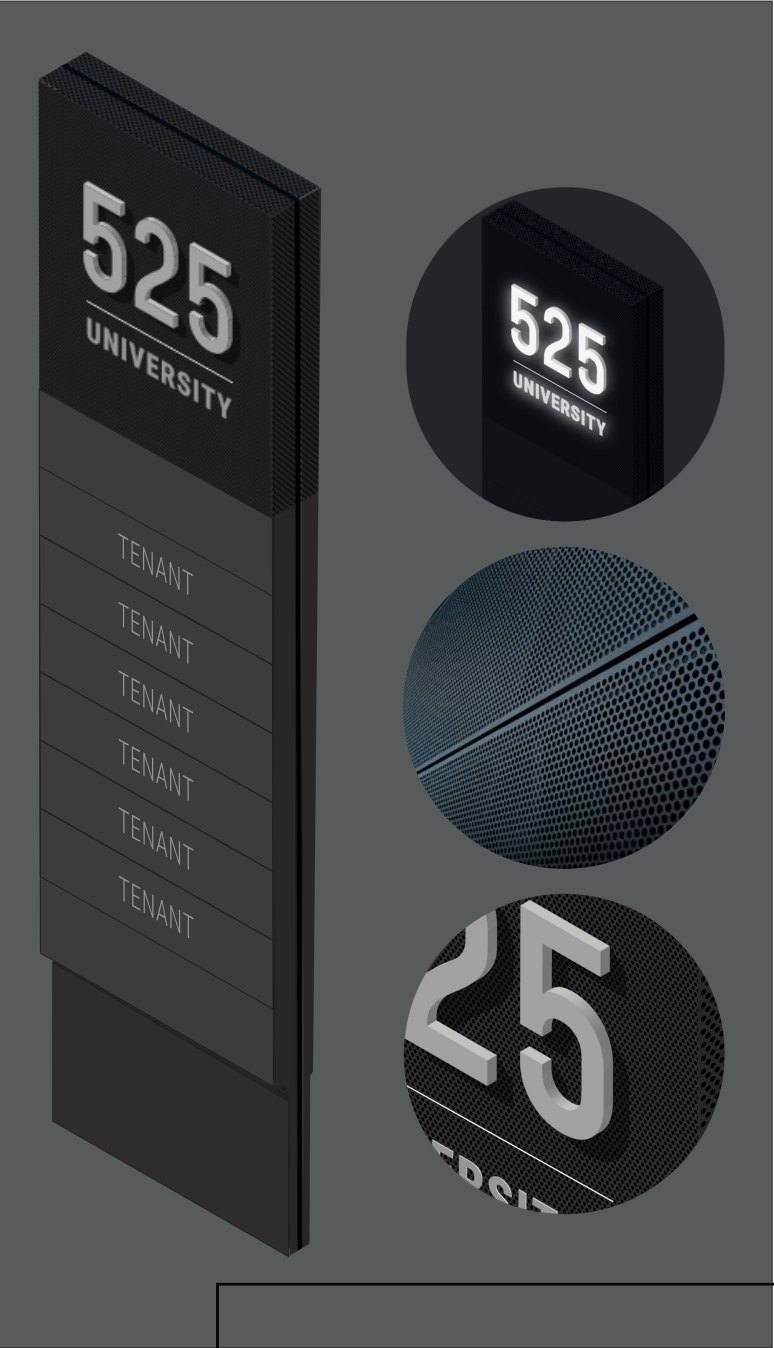
All drawings as well as creative content are the property of Corporate Sign Systems. You must have written consent by a Corporate Sign Systems' Officer prior to disclosure, reproduction, or distribution outside of your organization.

PAGE NUMBER  
**7**

This sign is intended to be installed in accordance with the requirements of Article 600 of the National Electrical Code and/or other applicable local codes. This includes proper grounding and bonding of the sign.



EXISTING SIGN TO BE LIKE FOR LIKE



CLIENT  
525 UNIVERSITY

PROJECT  
**525**  
UNIVERSITY

525 UNIVERSITY AVE, SUITE 200  
PALO ALTO, CA 94301

DRAWING / REVISION DATE

06/29/23 - YY 02/09/24 - YY  
07/05/23 - YY 02/13/24 - YY  
07/11/23 - YY  
07/17/23 - YY  
07/28/23 - YY  
01/25/24 - YY  
02/06/24 - YY

FILE NAME / LOCATION

Orchard Commercial\525  
University Ave\\_LUX\Drawings\  
1512 525 University Exterior.cdr

ORDER NUMBER

1512

SIGN TYPE

A

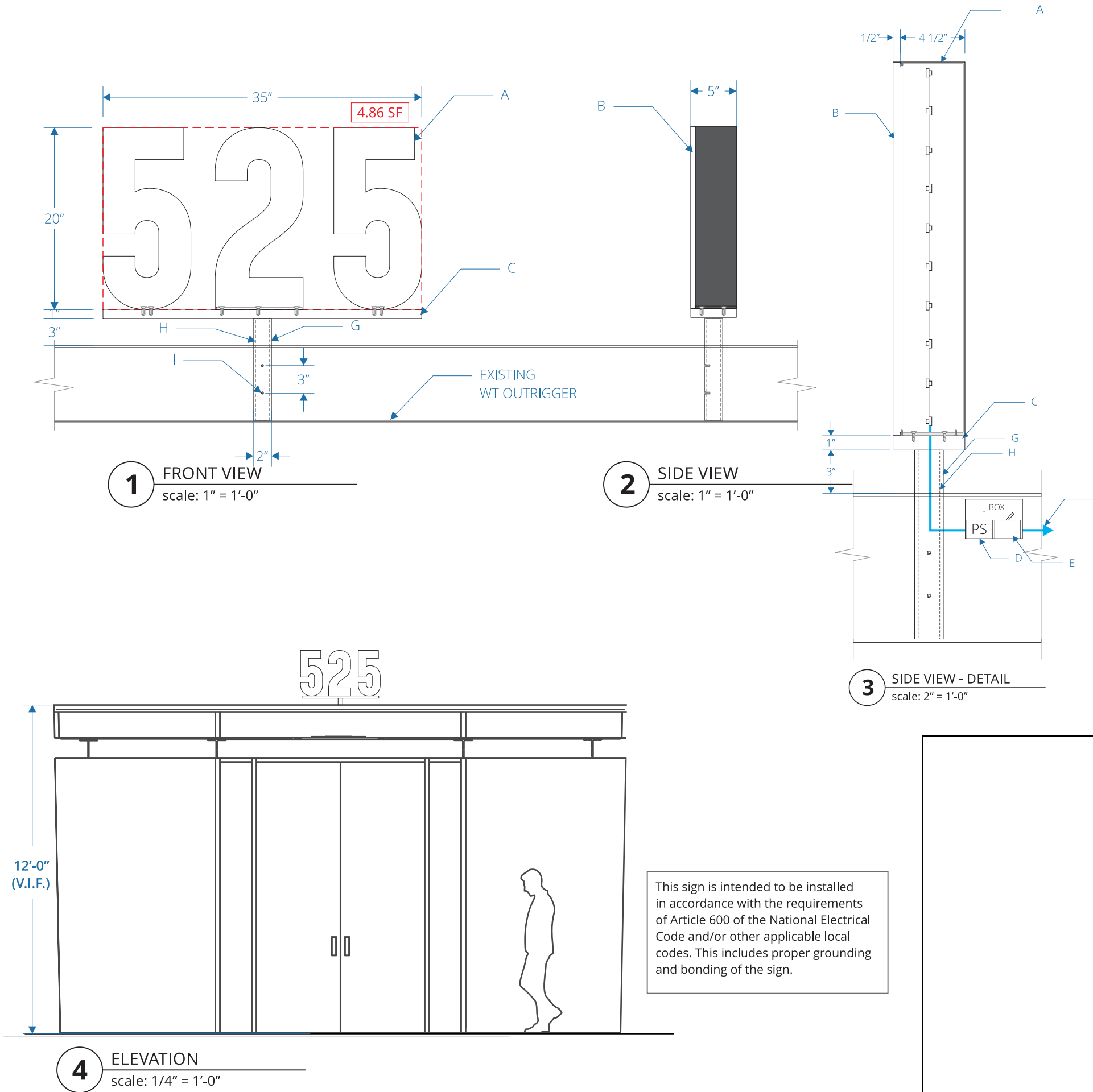
SHEET TITLE

PRIMARY MONUMENT  
(PHOTO ELEVATION)

All drawings as well as creative content are the property of Corporate Sign Systems. You must have written consent by a Corporate Sign Systems' Officer prior to disclosure, reproduction, or distribution outside of your organization.

PAGE NUMBER

8



DESCRIPTION	QTY: 1
A. 20"h x 5"d fabricated aluminum lettering, internally illuminated, 4"d aluminum returns painted C1 umber black, and acrylic face and back painted C2 white wonder	
B. 1/2"d face acrylic, painted C2 white wonder	
C. 1/4" thick aluminum plate, painted C2 white wonder, and attached to canopy with 3/8"dia - 16 x 4"L x 18-8 stainless steel hex drive flat head screw with steel spacer	
D. 110v-277v ul listed power supply	
E. j-box and disconnect switch box by others	
F. primary line 110-277v on dedicated circuit 20AMP by others	
G. 2" x 2" x 1/4" steel square aluminum tube, fully welded to top of WT outrigger by GC (see engineering for detail)	
H. 1 1/2" x 1 1/2" x 1/8" steel square aluminum tube sleeves into 2" x 2" x 1/4" aluminum tube (see engineering for detail)	
I. stainless steel counter-sunk drill and tap bolt	

CLIENT  
525 UNIVERSITY

PROJECT  
**525**  
UNIVERSITY

525 UNIVERSITY AVE, SUITE 200  
PALO ALTO, CA 94301

DRAWING / REVISION DATE  
06/29/23 - YY 02/09/24 - YY  
07/05/23 - YY 02/13/24 - YY  
07/11/23 - YY  
07/17/23 - YY  
07/28/23 - YY  
01/25/24 - YY  
02/06/24 - YY

FILE NAME / LOCATION  
Orchard Commercial\525  
University Ave\\_LUX\Drawings\  
1512 525 University Exterior.cdr

ORDER NUMBER  
**1512**

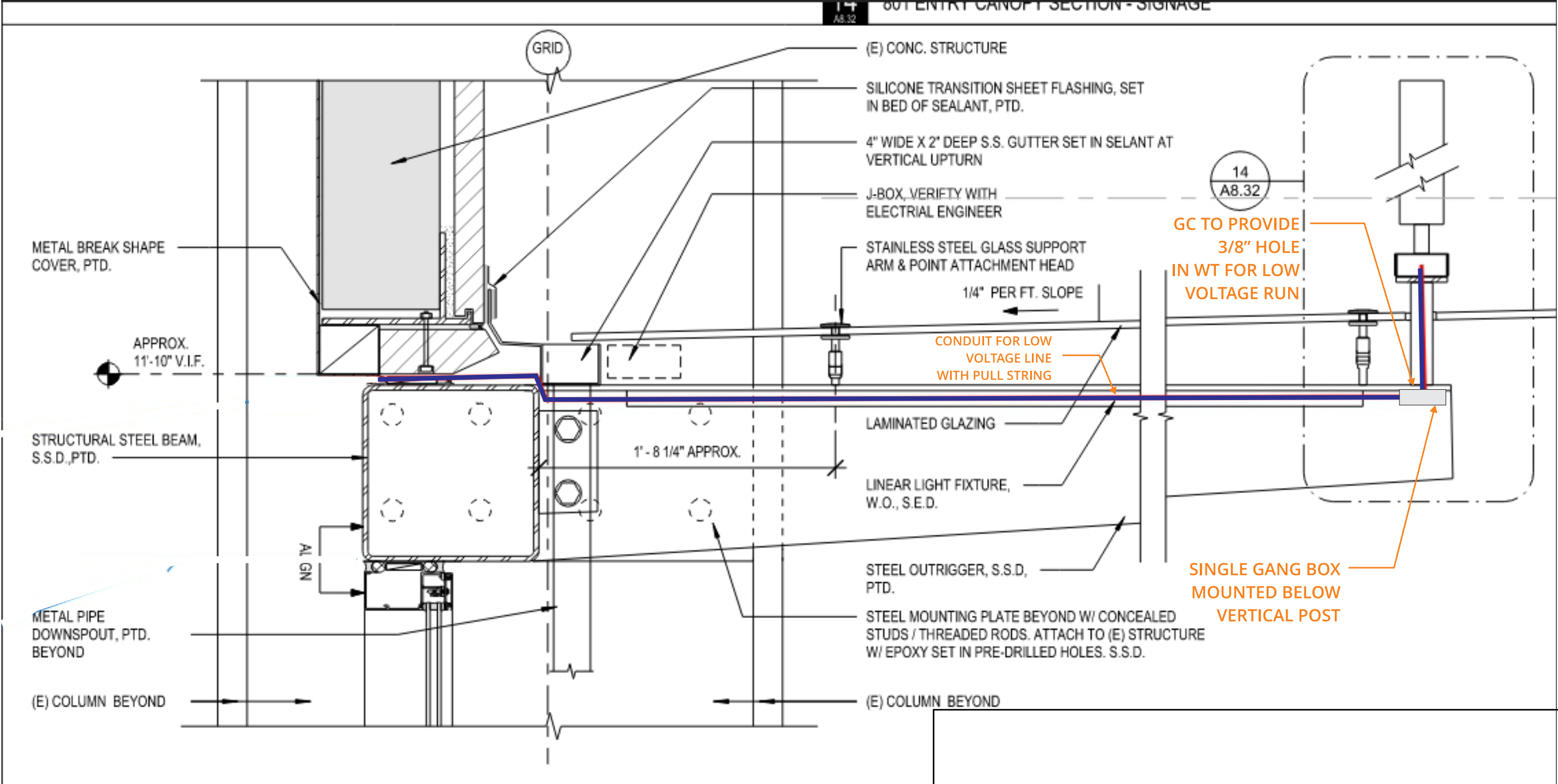
SIGN TYPE  
**B**

SHEET TITLE  
ADDRESS ID

All drawings as well as creative content are the property of Corporate Sign Systems. You must have written consent by a Corporate Sign Systems' Officer prior to disclosure, reproduction, or distribution outside of your organization.

PAGE NUMBER  
**9**

ENTRY CANOPY CONNECTION TO (E) BUILDING - SECTION



CLIENT  
525 UNIVERSITY

PROJECT  
**525**  
UNIVERSITY

525 UNIVERSITY AVE, SUITE 200  
PALO ALTO, CA 94301

DRAWING / REVISION DATE  
06/29/23 - YY 02/09/24 - YY  
07/05/23 - YY 02/13/24 - YY  
07/11/23 - YY  
07/17/23 - YY  
07/28/23 - YY  
01/25/24 - YY  
02/06/24 - YY

FILE NAME / LOCATION  
Orchard Commercial\525  
University Ave\\_LUX\Drawings\  
1512 525 University Exterior.cdr

ORDER NUMBER

1512

SIGN TYPE

B

SHEET TITLE  
ADDRESS ID

All drawings as well as creative content are the property of Corporate Sign Systems. You must have written consent by a Corporate Sign Systems' Officer prior to disclosure, reproduction, or distribution outside of your organization.

PAGE NUMBER

10



CLIENT  
525 UNIVERSITY

PROJECT  
**525**  
UNIVERSITY

525 UNIVERSITY AVE, SUITE 200  
PALO ALTO, CA 94301

DRAWING / REVISION DATE  
06/29/23 - YY 02/09/24 - YY  
07/05/23 - YY 02/13/24 - YY  
07/11/23 - YY  
07/17/23 - YY  
07/28/23 - YY  
01/25/24 - YY  
02/06/24 - YY

FILE NAME / LOCATION  
Orchard Commercial\525  
University Ave\\_LUX\Drawings\  
1512 525 University Exterior.cdr

ORDER NUMBER  
1512

SIGN TYPE  
B

SHEET TITLE  
ADDRESS ID

All drawings as well as creative content are the property of Corporate Sign Systems. You must have written consent by a Corporate Sign Systems' Officer prior to disclosure, reproduction, or distribution outside of your organization.

PAGE NUMBER  
11



1 FRONT VIEW  
scale: 3/8" = 1'-0"

2 SIDE VIEW  
scale: 3/8" = 1'-0"



3 FRONT VIEW - DETAIL  
scale: 1/2" = 1'-0"

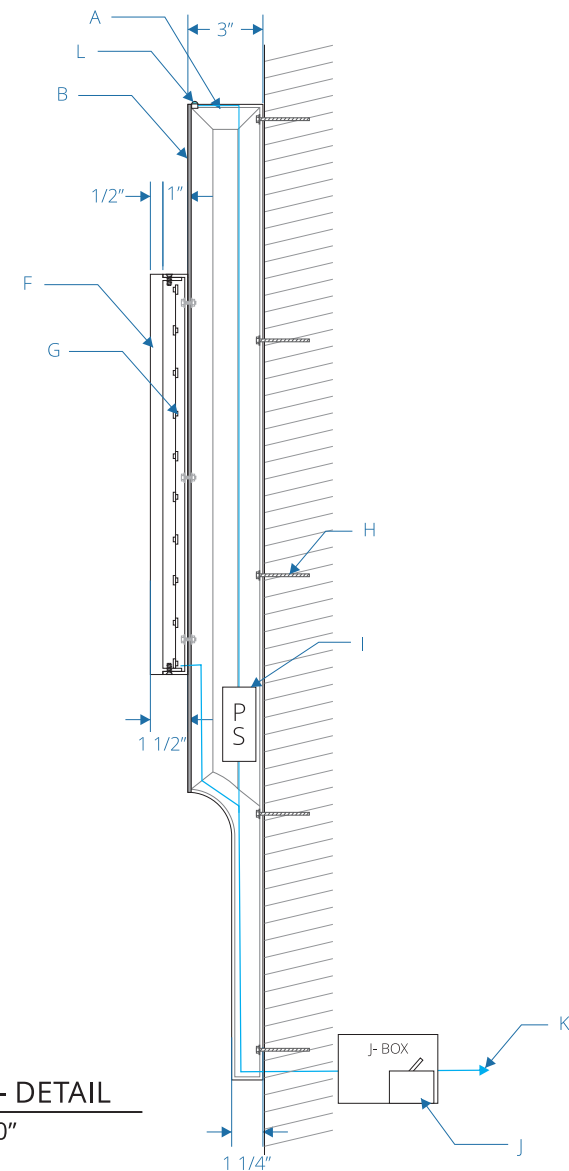
DESCRIPTION

QTY: 1

- A. 39"h x 216"w x 3"d - 1 1/2"d fabricated aluminum cabinet with face perforated on the top portion, painted C1 umber black
- B. 1/8" thick perforated aluminum face
- C. bottom curved portion of fabricated aluminum sign cabinet at 1 1/2"d, painted C1 umber black
- D. 16"h x 1 1/2"d fabricated aluminum lettering with 1/2" thick acrylic face lit mount to sign face cabinet
- F. 1/2" thick acrylic face, painted C2 white wonder
- G. LEDs
- H. attached to existing wall with tapcon concrete anchor
- I. 110v-277v ul listed power supply
- J. [christy box and disconnect switch box by others](#)
- K. [primary line 110-277v on dedicated circuit 20AMP by others](#)
- L. photocell

This sign is intended to be installed in accordance with the requirements of Article 600 of the National Electrical Code and/or other applicable local codes. This includes proper grounding and bonding of the sign.

4 SIDE VIEW - DETAIL  
scale: 2" = 1'-0"



CLIENT  
525 UNIVERSITY

PROJECT  
**525**  
UNIVERSITY

525 UNIVERSITY AVE, SUITE 200  
PALO ALTO, CA 94301

DRAWING / REVISION DATE

06/29/23 - YY 02/09/24 - YY  
07/05/23 - YY 02/13/24 - YY  
07/11/23 - YY  
07/17/23 - YY  
07/28/23 - YY  
01/25/24 - YY  
02/06/24 - YY

FILE NAME / LOCATION

Orchard Commercial\525  
University Ave\\_LUX\Drawings\  
1512 525 University Exterior.cdr

ORDER NUMBER

1512

SIGN TYPE

C

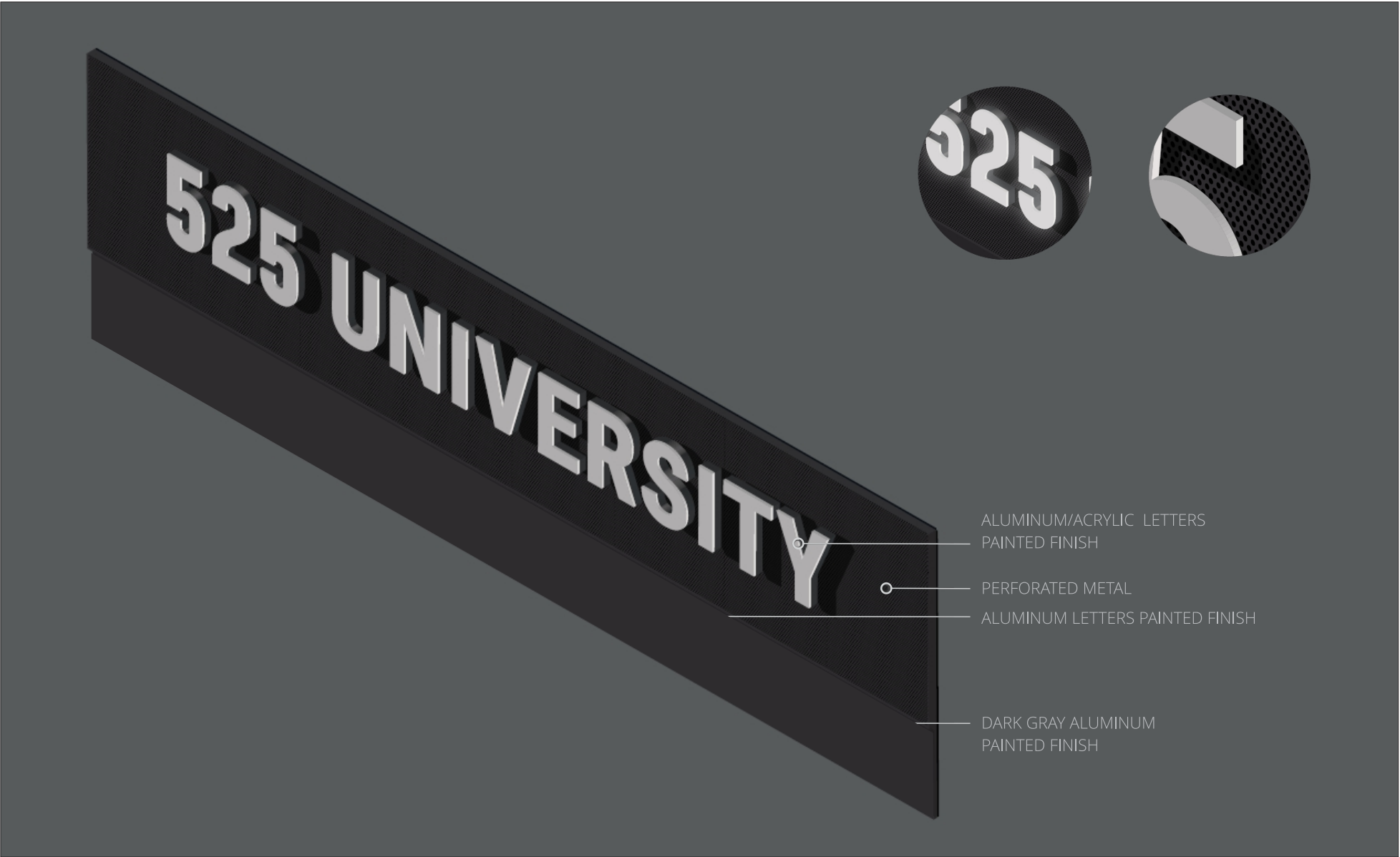
SHEET TITLE

PROPERTY ID

All drawings as well as creative content are the property of Corporate Sign Systems. You must have written consent by a Corporate Sign Systems' Officer prior to disclosure, reproduction, or distribution outside of your organization.

PAGE NUMBER

12



- ALUMINUM/ACRYLIC LETTERS  
PAINTED FINISH
- PERFORATED METAL
- ALUMINUM LETTERS PAINTED FINISH
- DARK GRAY ALUMINUM  
PAINTED FINISH

5 RENDERING  
scale: NTS

CLIENT  
525 UNIVERSITY

PROJECT  
**525**  
UNIVERSITY

525 UNIVERSITY AVE, SUITE 200  
PALO ALTO, CA 94301

DRAWING / REVISION DATE  
06/29/23 - YY 02/09/24 - YY  
07/05/23 - YY 02/13/24 - YY  
07/11/23 - YY  
07/17/23 - YY  
07/28/23 - YY  
01/25/24 - YY  
02/06/24 - YY

FILE NAME / LOCATION  
Orchard Commercial\525  
University Ave\\_LUX\Drawings\  
1512 525 University Exterior.cdr

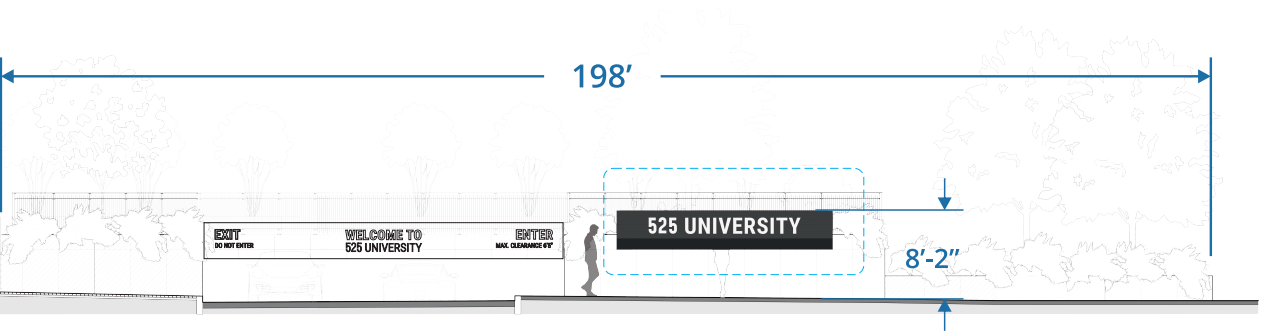
ORDER NUMBER  
**1512**

SIGN TYPE  
**C**

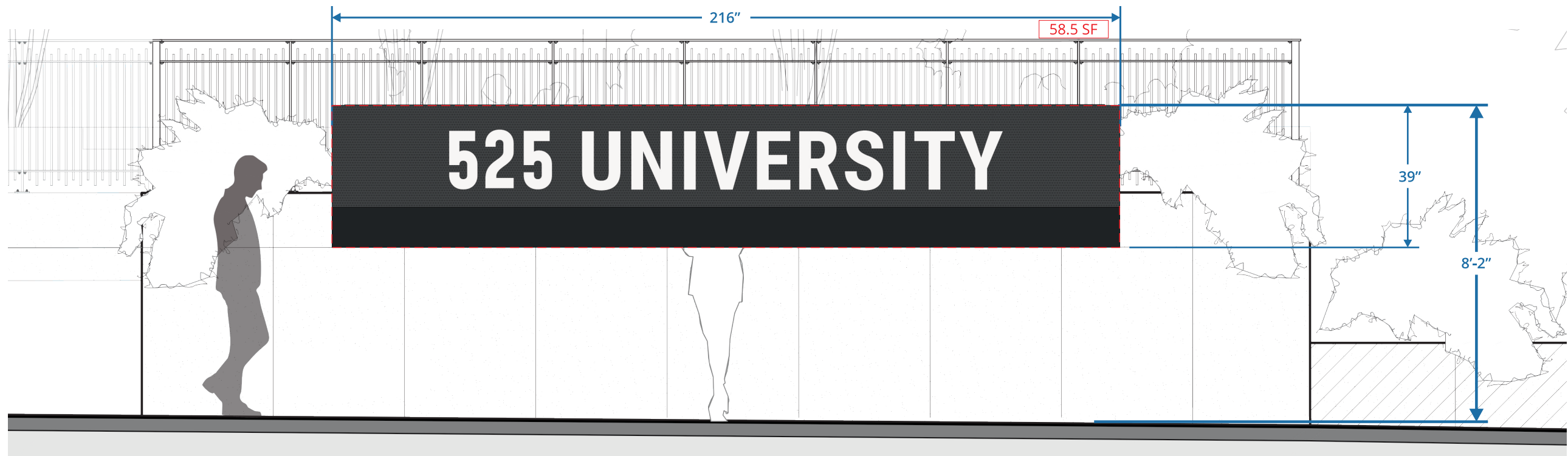
SHEET TITLE  
PROPERTY ID

All drawings as well as creative content  
are the property of Corporate Sign  
Systems. You must have written consent  
by a Corporate Sign Systems' Officer prior  
to disclosure, reproduction, or distribution  
outside of your organization.

PAGE NUMBER  
**13**

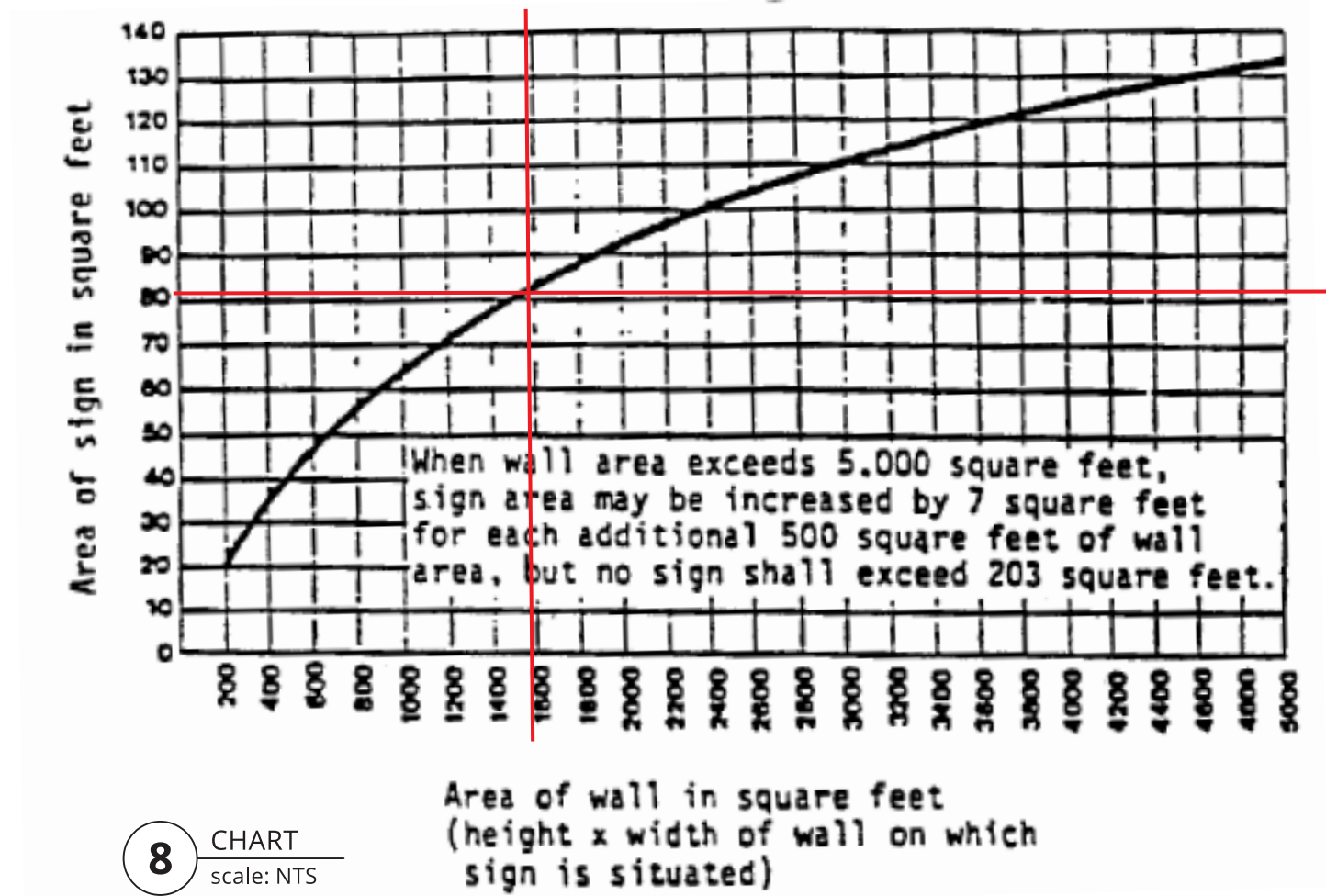


6 ELEVATION  
scale: 1/16" = 1'-0"



**7** ELEVATION - ENLARGED  
scale: 3/8" = 1'-0"

WALL SIGNS: COMBINED SIGN TYPE C AND SIGN TYPE D



**8** CHART  
scale: NTS

CLIENT  
525 UNIVERSITY

PROJECT  
**525**  
UNIVERSITY

525 UNIVERSITY AVE, SUITE 200  
PALO ALTO, CA 94301

DRAWING / REVISION DATE

06/29/23 - YY 02/09/24 - YY  
07/05/23 - YY 02/13/24 - YY  
07/11/23 - YY  
07/17/23 - YY  
07/28/23 - YY  
01/25/24 - YY  
02/06/24 - YY

FILE NAME / LOCATION

Orchard Commercial\525  
University Ave\\_LUX\Drawings\  
1512 525 University Exterior.cdr

ORDER NUMBER

1512

SIGN TYPE

C

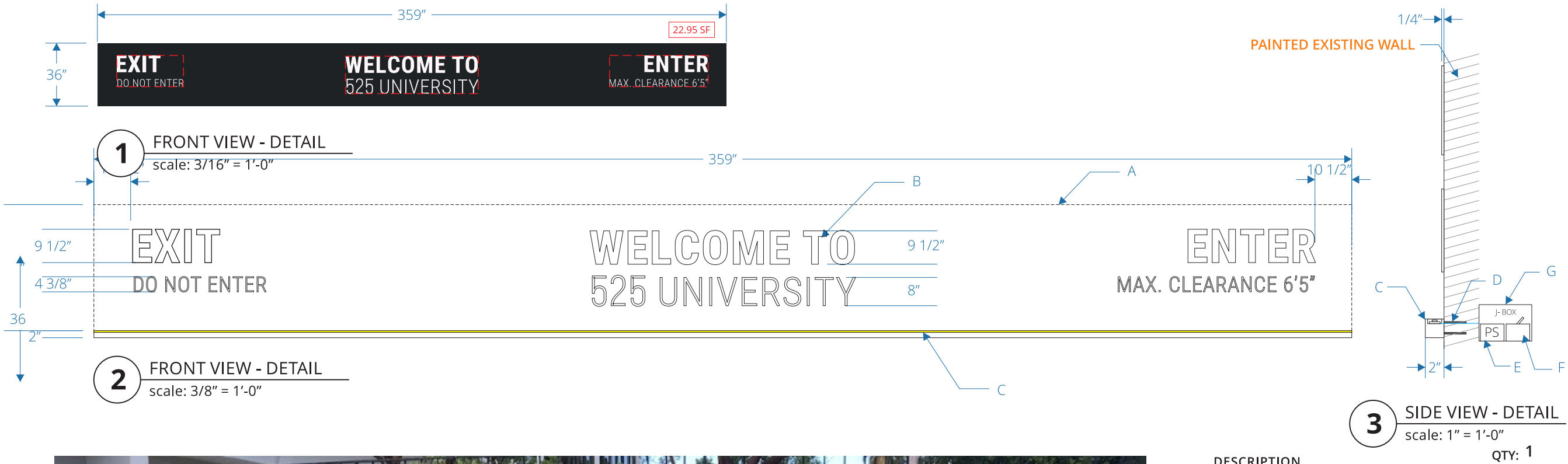
SHEET TITLE

PROPERTY ID

All drawings as well as creative content  
are the property of Corporate Sign  
Systems. You must have written consent  
by a Corporate Sign Systems' Officer prior  
to disclosure, reproduction, or distribution  
outside of your organization.

PAGE NUMBER

14



- DESCRIPTION**
- A. existing concrete wall, painted C1 umber black
  - B. 1/4" thick fco acrylic lettering, painted C2 white
  - C. fabricated aluminum race box with upward light mounted to base of sign, painted C1 umber black
  - D. attached to wall with stud mounting
  - E. 110v-277v ul listed power supply
  - F. J-box and disconnect switch box by others
  - G. primary line 110-277v on dedicated circuit 20AMP by others

CLIENT  
525 UNIVERSITY

PROJECT  
**525**  
UNIVERSITY

525 UNIVERSITY AVE, SUITE 200  
PALO ALTO, CA 94301

**DRAWING / REVISION DATE**

06/29/23 - YY 02/09/24 - YY  
07/05/23 - YY 02/13/24 - YY  
07/11/23 - YY  
07/17/23 - YY  
07/28/23 - YY  
01/25/24 - YY  
02/06/24 - YY

**FILE NAME / LOCATION**

Orchard Commercial\525  
University Ave\\_LUX\Drawings\  
1512 525 University Exterior.cdr

**ORDER NUMBER**

1512

**SIGN TYPE**

D

**SHEET TITLE**

OVERHEAD PARKING ID

All drawings as well as creative content are the property of Corporate Sign Systems. You must have written consent by a Corporate Sign Systems' Officer prior to disclosure, reproduction, or distribution outside of your organization.

**PAGE NUMBER**

15

CLIENT  
525 UNIVERSITY

PROJECT  
**525**  
UNIVERSITY  
  
525 UNIVERSITY AVE, SUITE 200  
PALO ALTO, CA 94301

DRAWING / REVISION DATE  
06/29/23 - YY 02/09/24 - YY  
07/05/23 - YY 02/13/24 - YY  
07/11/23 - YY  
07/17/23 - YY  
07/28/23 - YY  
01/25/24 - YY  
02/06/24 - YY

FILE NAME / LOCATION  
Orchard Commercial\525  
University Ave\\_LUX\Drawings\  
1512 525 University Exterior.cdr

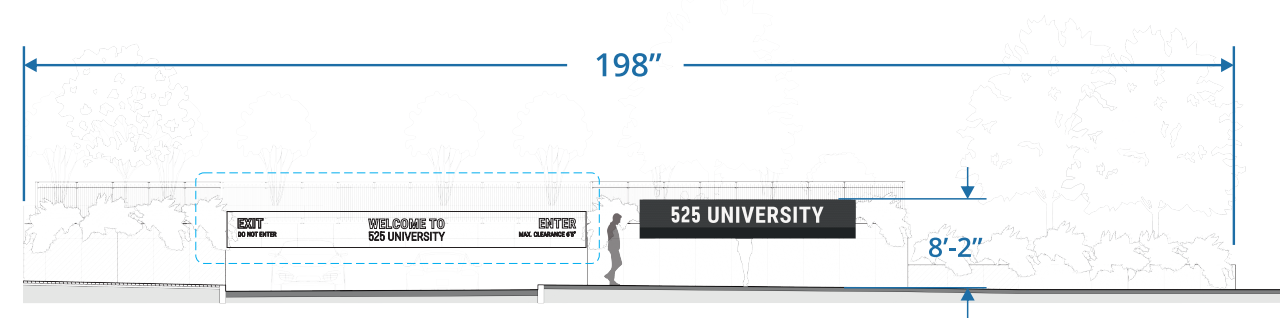
ORDER NUMBER  
**1512**

SIGN TYPE  
**D**

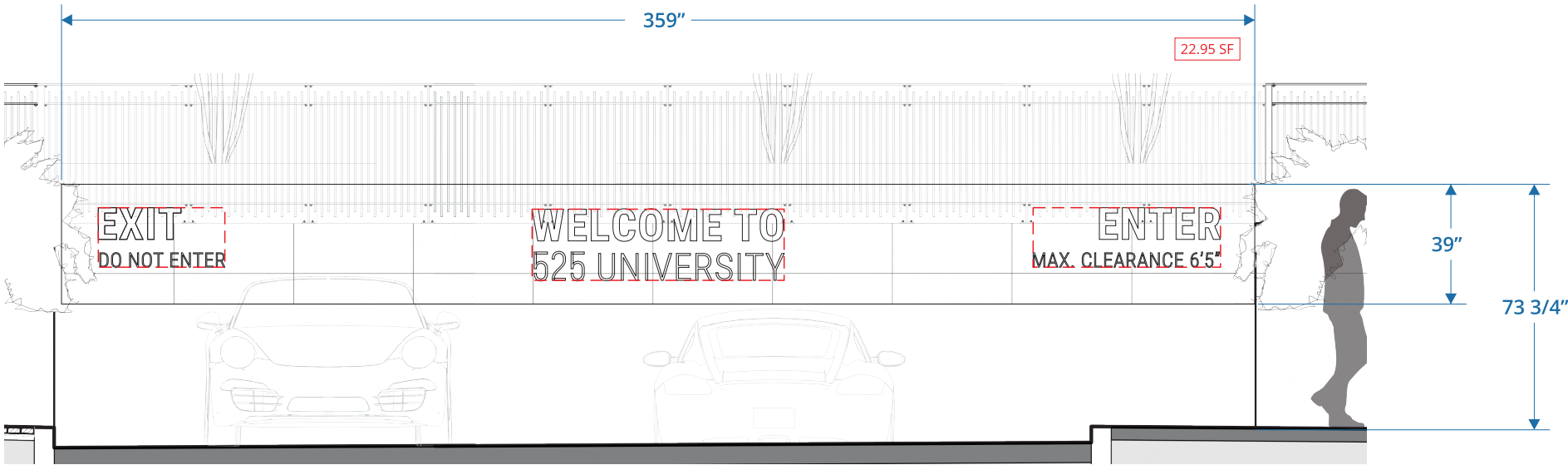
SHEET TITLE  
OVERHEAD PARKING ID

All drawings as well as creative content are the property of Corporate Sign Systems. You must have written consent by a Corporate Sign Systems' Officer prior to disclosure, reproduction, or distribution outside of your organization.

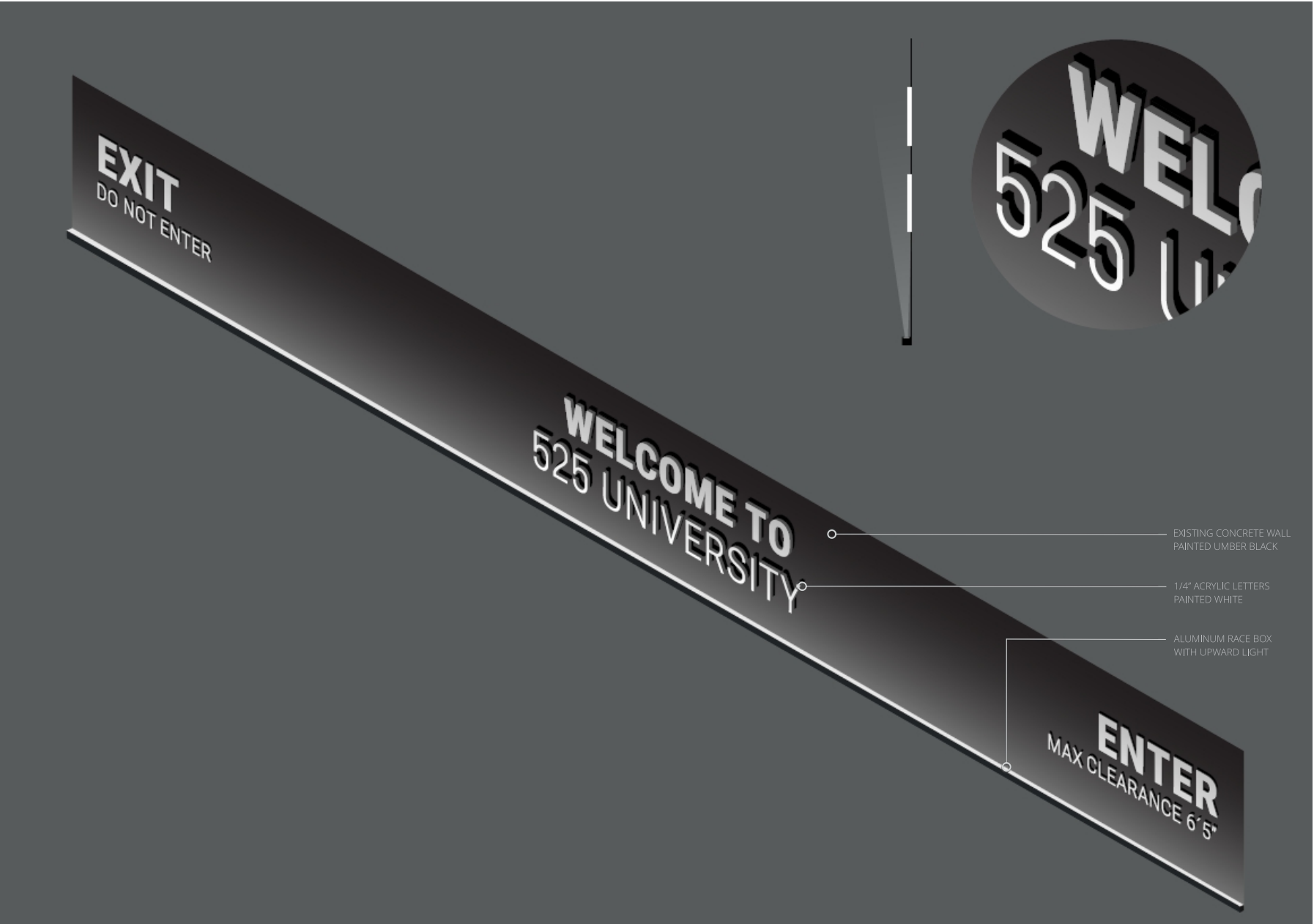
PAGE NUMBER  
**16**



**5** ELEVATION  
scale: 1/16" = 1'-0"



**6** ELEVATION - ENLARGED  
scale: 1/4" = 1'-0"



EXISTING CONCRETE WALL  
PAINTED UMBER BLACK

1/4" ACRYLIC LETTERS  
PAINTED WHITE

ALUMINUM RACE BOX  
WITH UPWARD LIGHT

CLIENT  
525 UNIVERSITY

PROJECT  
**525**  
UNIVERSITY

525 UNIVERSITY AVE, SUITE 200  
PALO ALTO, CA 94301

DRAWING / REVISION DATE

06/29/23 - YY 02/09/24 - YY  
07/05/23 - YY 02/13/24 - YY  
07/11/23 - YY  
07/17/23 - YY  
07/28/23 - YY  
01/25/24 - YY  
02/06/24 - YY

FILE NAME / LOCATION

Orchard Commercial\525  
University Ave\\_LUX\Drawings\  
1512 525 University Exterior.cdr

ORDER NUMBER

1512

SIGN TYPE

D

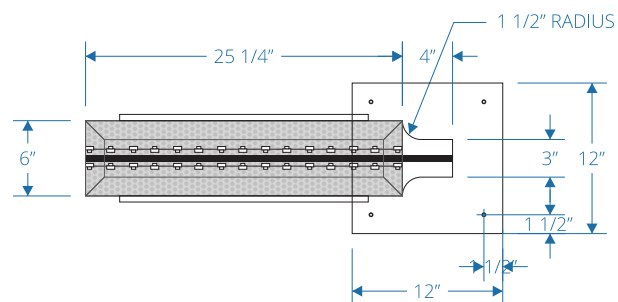
SHEET TITLE

OVERHEAD PARKING ID

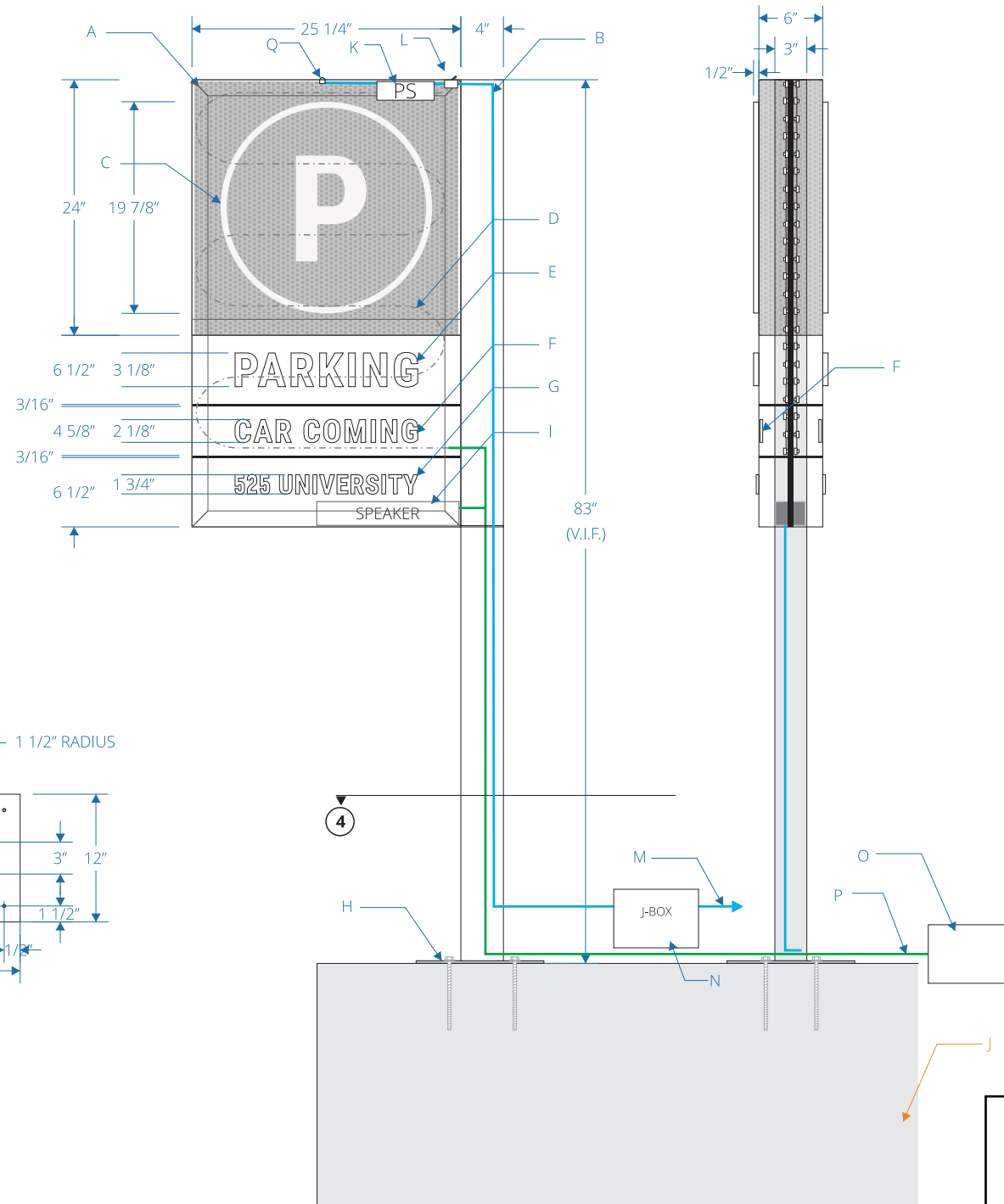
All drawings as well as creative content  
are the property of Corporate Sign  
Systems. You must have written consent  
by a Corporate Sign Systems' Officer prior  
to disclosure, reproduction, or distribution  
outside of your organization.

PAGE NUMBER

17



This sign is intended to be installed in accordance with the requirements of Article 600 of the National Electrical Code and/or other applicable local codes. This includes proper grounding and bonding of the sign.



DESCRIPTION

QTY: 1

**A.** 42"h x 25 1/4"w x 6"d fabricated aluminum cabinet with partially 24"h x 25 1/4"w perforated panel at the top part and internally illuminated, painted C1dark gray

**B.** 4"w x 3"thick aluminum post, painted C2 dark gray

**C.** 1/2" thick acrylic graphic and lettering push thru,  
painted C2 white

#### D. LEDs

**E.** 3 1/8" h x 1/2" thick push thru acrylic "Parking" lettering, painted C2 white

**F.** cutout lettering with vehicle detection sensor program to lit, applied red LEDs and day night acrylic.

**G.** 1 3/4" h x 1/4" thick FCO address lettering stainless steel

H. 1/4" thick aluminum plate attached with steel thru bolt to existing base

I. installed speaker inside the sign cabinet  
(see spec sheet for programming and installation detail)

## J. EXISTING base by Others

**K.** 110v-277v ul listed power supply

### L. Disconnect switch box

**M.** primary line 110-277v on dedicated circuit  
20AMP by others

## N. J-box by others

- O.** "Car Coming" controller box supplier by sign contractor installed and **programmed by OTHERS**

**P. 12v line brought to the sign by OTHERS.**  
Connection made by sign contractor.

**Q. Photocell**

Notes: Programming and wiring of the “car coming” sensor and controller by OTHERS

**0**  
**corporate**<sup>TM</sup>  
SIGN SYSTEMS

408.292.1600  
2464 De La Cruz Blvd., Santa Clara, CA 95050  
[www.corporatesigns.com](http://www.corporatesigns.com)  
CONTRACTOR'S LIC# 765078  
CLASS C45-ELECTRICAL SIGN CONTRACTOR

CLIENT  
525 UNIVERSITY

PROJECT  
**525**  
UNIVERSITY

525 UNIVERSITY AVE, SUITE 200  
PALO ALTO, CA 94301

DRAWING / REVISION DATE

06/29/23 - YY 02/09/24 - YY  
07/05/23 - YY 02/13/24 - YY  
07/11/23 - YY  
07/17/23 - YY  
07/28/23 - YY  
01/25/24 - YY  
02/06/24 - YY

FILE NAME / LOCATION

Orchard Commercial\525  
University Ave\\_LUX\Drawings\  
1512 525 University Exterior.cdr

ORDER NUMBER

1512

SIGN TYPE

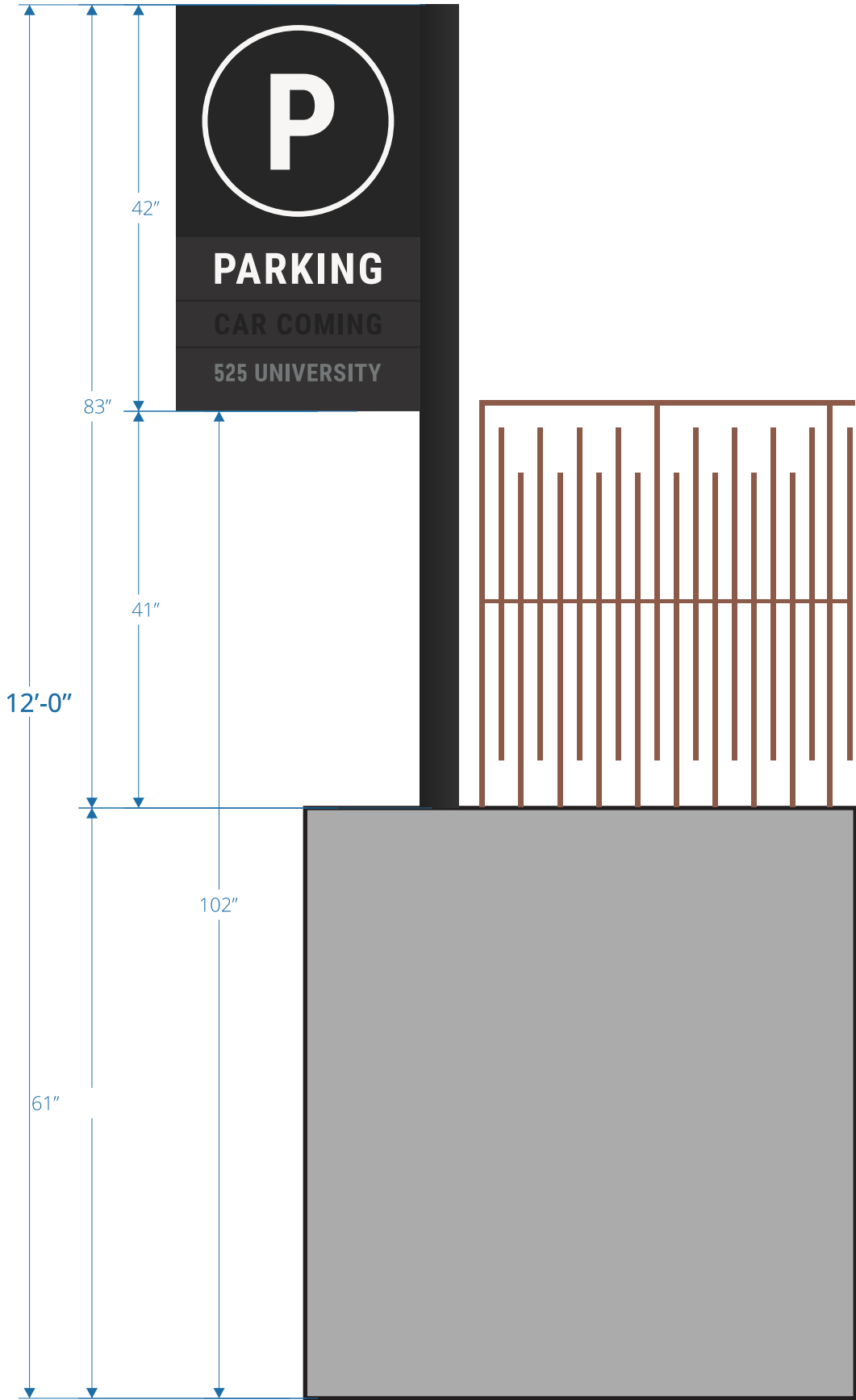
## E

SHEET TITLE  
BLADE PARKING ID

All drawings as well as creative content are the property of Corporate Sign Systems. You must have written consent by a Corporate Sign Systems' Officer prior to disclosure, reproduction, or distribution outside of your organization.

PAGE NUMBER

18



**1** INSTALL ELEVATION  
scale: 3/4" = 1'-0"



**2** RENDERING  
scale: NTS

CLIENT  
525 UNIVERSITY

PROJECT  
**525**  
UNIVERSITY

525 UNIVERSITY AVE, SUITE 200  
PALO ALTO, CA 94301

DRAWING / REVISION DATE  
06/29/23 - YY 02/09/24 - YY  
07/05/23 - YY 02/13/24 - YY  
07/11/23 - YY  
07/17/23 - YY  
07/28/23 - YY  
01/25/24 - YY  
02/06/24 - YY

FILE NAME / LOCATION  
Orchard Commercial\525  
University Ave\\_LUX\Drawings\  
1512 525 University Exterior.cdr

ORDER NUMBER  
**1512**

SIGN TYPE  
**E**

SHEET TITLE  
BLADE PARKING ID

All drawings as well as creative content  
are the property of Corporate Sign  
Systems. You must have written consent  
by a Corporate Sign Systems' Officer prior  
to disclosure, reproduction, or distribution  
outside of your organization.

PAGE NUMBER  
**19**



PROPOSED SIGN



EXISTING SIGN TO BE LIKE FOR LIKE

CLIENT  
525 UNIVERSITY

PROJECT  
**525**  
UNIVERSITY

525 UNIVERSITY AVE, SUITE 200  
PALO ALTO, CA 94301

DRAWING / REVISION DATE  
06/29/23 - YY 02/09/24 - YY  
07/05/23 - YY 02/13/24 - YY  
07/11/23 - YY  
07/17/23 - YY  
07/28/23 - YY  
01/25/24 - YY  
02/06/24 - YY

FILE NAME / LOCATION  
Orchard Commercial\525  
University Ave\\_LUX\Drawings\  
1512 525 University Exterior.cdr

ORDER NUMBER  
**1512**

SIGN TYPE  
**E**

SHEET TITLE  
BLADE PARKING ID

All drawings as well as creative content are the property of Corporate Sign Systems. You must have written consent by a Corporate Sign Systems' Officer prior to disclosure, reproduction, or distribution outside of your organization.

PAGE NUMBER  
**20**

CLIENT  
525 UNIVERSITY

PROJECT  
**525**  
UNIVERSITY

525 UNIVERSITY AVE, SUITE 200  
PALO ALTO, CA 94301

DRAWING / REVISION DATE

06/29/23 - YY 02/09/24 - YY  
07/05/23 - YY 02/13/24 - YY  
07/11/23 - YY  
07/17/23 - YY  
07/28/23 - YY  
01/25/24 - YY  
02/06/24 - YY

FILE NAME / LOCATION

Orchard Commercial\525  
University Ave\\_LUX\Drawings\  
1512 525 University Exterior.cdr

ORDER NUMBER

1512

SIGN TYPE

SHEET TITLE

SPEC SHEET DETAIL

All drawings as well as creative content  
are the property of Corporate Sign  
Systems. You must have written consent  
by a Corporate Sign Systems' Officer prior  
to disclosure, reproduction, or distribution  
outside of your organization.

PAGE NUMBER

21

(1) Pass Signs  
Controller PSC-5  
with 12VDC 6A  
power supply

Vehicle detection  
sensor

Customers Sign

If speaker is inside  
sign use 18AWG/4C,  
if not use 18AWG/2C

---18Awg/4C---

---18Awg/4C---

120VAC circuit  
power in

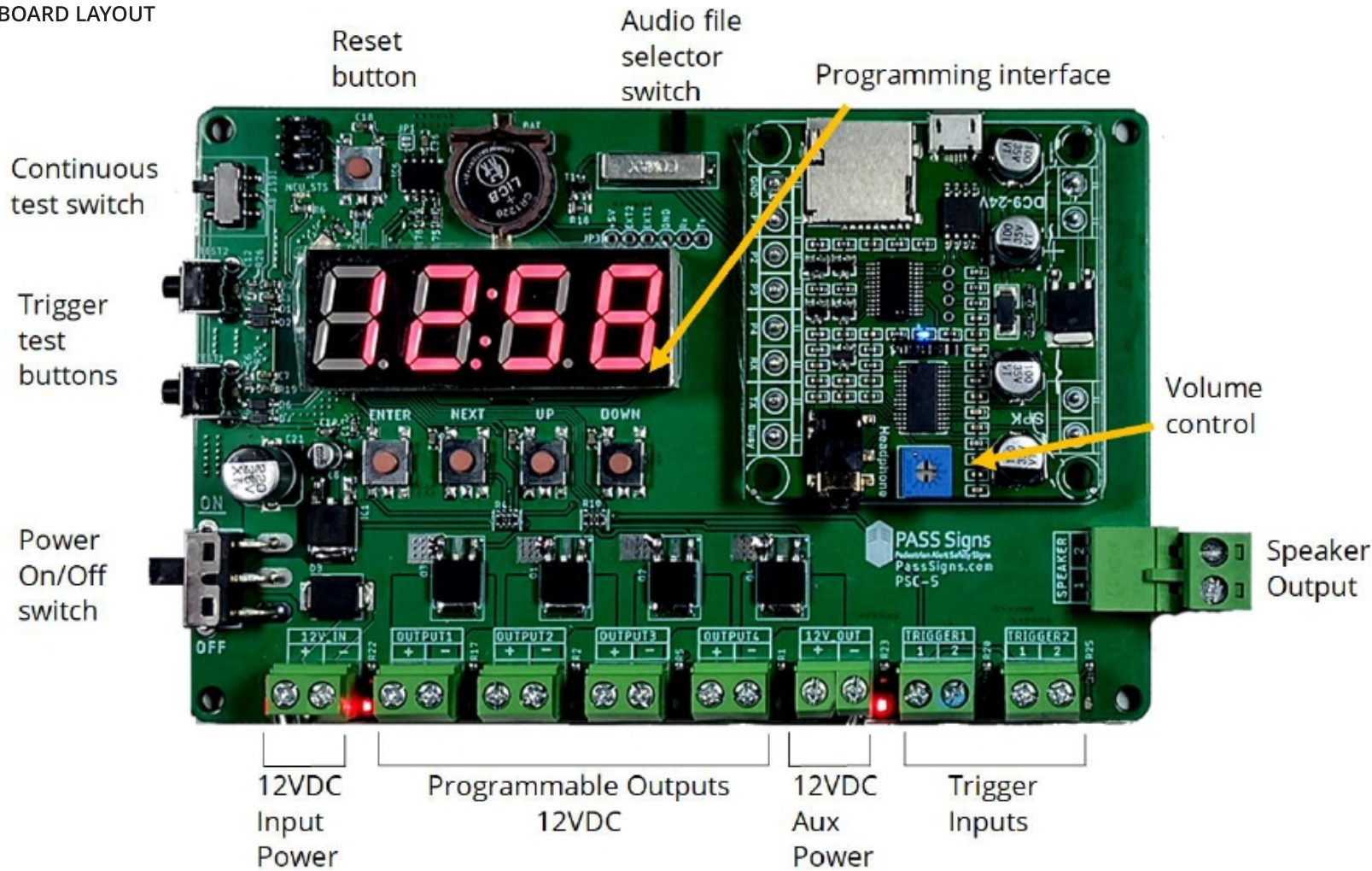
CAR SENSOR

CAR COMING  
CONTROLLER BOX

12'-0"

18"

scale: 3/32" = 1'-0"



Quick Features

- (4) Timed outputs programmed for either flashing or constant output
- (2) Dry inputs programmed to trigger from Normally Open or Normally Closed
- (1) Timed speaker output with volume control and (4) channel selectable audio files
- Nighttime Audio cut-off timer (turn off audio output during designated times; example 8pm to 7am)
- Real-time clock onboard with programmable interface

CLIENT  
525 UNIVERSITY

PROJECT  
**525**  
UNIVERSITY

525 UNIVERSITY AVE, SUITE 200  
PALO ALTO, CA 94301

DRAWING / REVISION DATE

06/29/23 - YY 02/09/24 - YY  
07/05/23 - YY 02/13/24 - YY  
07/11/23 - YY  
07/17/23 - YY  
07/28/23 - YY  
01/25/24 - YY  
02/06/24 - YY

FILE NAME / LOCATION

Orchard Commercial\525  
University Ave\\_LUX\Drawings\  
1512 525 University Exterior.cdr

ORDER NUMBER

1512

SIGN TYPE

SHEET TITLE  
SPEC SHEET DETAIL

All drawings as well as creative content are the property of Corporate Sign Systems. You must have written consent by a Corporate Sign Systems' Officer prior to disclosure, reproduction, or distribution outside of your organization.

PAGE NUMBER

22

VEHICLE MOTION DETECTOR - DIRECTIONAL LOGIC

PART NUMBER: PS-VMD-DL  
USED TO DETECT MOTION IN AN AREA FROM 10'X10' TO 21'X28' IN FRONT OF THE MOTION



Applications:

- ◆ Activating Parking Alert Signs for vehicles
- ◆ Activating roll-up doors, barriers, and gates
- ◆ Activating Parking Alert Signs for pedestrians
- ◆ Activating alarms
- ◆ Activating light control systems
- ◆ Wrong-way vehicle traffic
- ◆ Wrong-way pedestrian traffic

Start up takes 30 seconds  
Green LED - Detection of Vehicle  
Red LED - Detection of Pedestrian

\*\*Ceiling mounting: turn back bracket over, see page 3.

Wiring & Connections to PASS Signs Controller  
(see page 3 for terminations)

		Sensor Wire	Function	Pass Signs Control Board Connection
		Red	V+ (12-36V)	12V+ Out
Vehicle Detection		Black	V- (12-36V)	12V- Out
		White	Relay 1 NO	Trigger1
		Yellow	Relay 1 COM	Trigger1
		Brown	Relay 1 NC	
	Pedestrian Detection	Blue	Relay 2 NO	Trigger1
		Green	Relay 2 COM	Trigger1
		Grey	Relay 2 NC	

Direction Recognition from sensor:	Mode 1: Motion forward Mode 2: Motion backwards Mode 3: Motion in both directions
Mounting Height:	6ft ~ 28ft
Mounting Type:	Wall or Ceiling, 0° to 90°
Detection Area:	Min 10ft(w) x 10ft(d) at 6ft height Max 21ft(w) x 28ft(d) at 28ft height
Relay Info	Holding time - .2, .5, 1, 2, 5 secs 24VDC@1.0A 125VAC@0.5A

**Function 1: Directional Logic Vehicle Motion Detection**  
Detects ONLY cars and ONLY in a single direction. This prevents false detection from pedestrians walking through the area and vehicles traveling in the opposite direction.  
Vehicle Applications:

- Activating vehicle exit signs
- Activating ramp warning signs
- Activating traffic control systems
- Opening garage or roll-up doors

**Function 2: Directional Logic Pedestrian Motion Detection**  
Detects ONLY pedestrians and ONLY in a single direction. This prevents false detection from pedestrians walking opposite direction or crossing the zone.  
Pedestrian Applications:

- Activating pedestrian detection systems
- Activating storefront automatic doors
- Activating crosswalk systems

Application technology	Doppler radar
Transmission frequency	24.125GHz
Transmission power	<20dBm
Detection speed	2.0in/s – 15.5mph
Operation current	<100mA
Power frequency	50Hz
Temperature range	-22 °F ~ + 140 °F
Relative humidity	0% to 95%, no condensation
Protection grade	IP65
Relay output	24VDC@1.0A 125VAC@0.5A
External dimensions	6.46in x 4.37in x 3.72in
Cable length	23ft
Sensor weight	1.5lbs

CLIENT  
525 UNIVERSITY

PROJECT  
**525**  
UNIVERSITY  
  
525 UNIVERSITY AVE, SUITE 200  
PALO ALTO, CA 94301

DRAWING / REVISION DATE  
06/29/23 - YY 02/09/24 - YY  
07/05/23 - YY 02/13/24 - YY  
07/11/23 - YY  
07/17/23 - YY  
07/28/23 - YY  
01/25/24 - YY  
02/06/24 - YY

FILE NAME / LOCATION  
Orchard Commercial\525  
University Ave\\_LUX\Drawings\  
1512 525 University Exterior.cdr

ORDER NUMBER  
1512

SIGN TYPE

SHEET TITLE  
SPEC SHEET DETAIL

All drawings as well as creative content are the property of Corporate Sign Systems. You must have written consent by a Corporate Sign Systems' Officer prior to disclosure, reproduction, or distribution outside of your organization.

PAGE NUMBER  
23

EXISTING SIGN TO BE REMOVED



CLIENT  
525 UNIVERSITY

PROJECT  
**525**  
UNIVERSITY

525 UNIVERSITY AVE, SUITE 200  
PALO ALTO, CA 94301

DRAWING / REVISION DATE  
06/29/23 - YY 02/09/24 - YY  
07/05/23 - YY 02/13/24 - YY  
07/11/23 - YY  
07/17/23 - YY  
07/28/23 - YY  
01/25/24 - YY  
02/06/24 - YY

FILE NAME / LOCATION  
Orchard Commercial\525  
University Ave\\_LUX\Drawings\  
1512 525 University Exterior.cdr

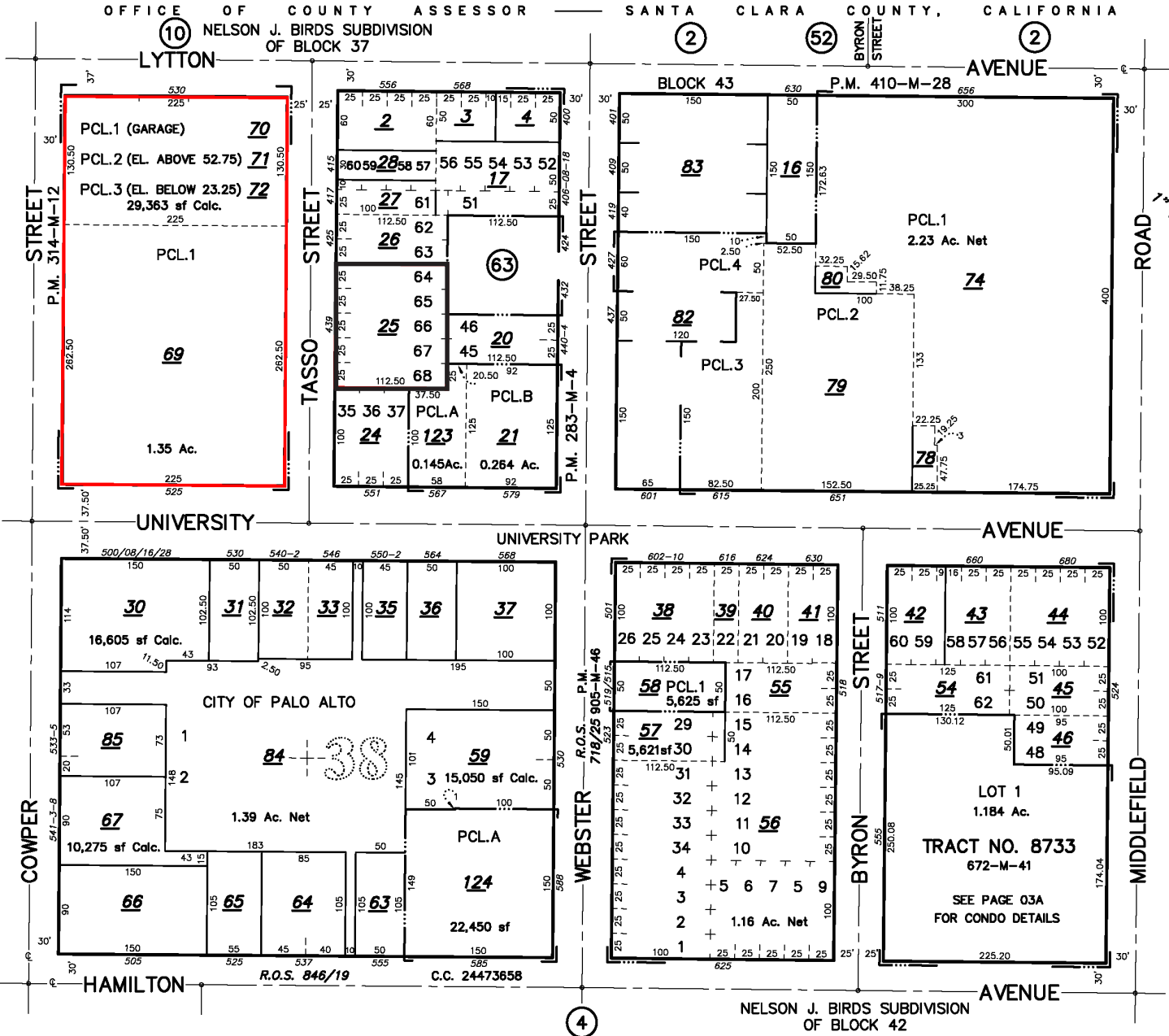
ORDER NUMBER  
**1512**

SIGN TYPE  
**X1**

SHEET TITLE  
EXISTING SIGN

All drawings as well as creative content are the property of Corporate Sign Systems. You must have written consent by a Corporate Sign Systems' Officer prior to disclosure, reproduction, or distribution outside of your organization.

PAGE NUMBER  
**24**



BOOK  
120

PAGE  
3

TRACT NO. 8733  
HAMILTON CONDOS  
CD. 13212391

555 BYRON STREET

UNIT	FLR	APN	SITUS
101	1	87	101
102	1	88	102
103	1	89	103
104	1	90	104
105	1	91	105
106	1	92	106
107	1	93	107
109	1	94	109
201	2	95	201
202	2	96	202
203	2	97	203
204	2	98	204
205	2	99	205
206	2	100	206
207	2	101	207
208	2	102	208
209	2	103	209
210	2	104	210
211	2	105	211
301	3	106	301
302	3	107	302
303	3	108	303
304	3	109	304
305	3	110	305
306	3	111	306
307	3	112	307
308	3	113	308
309	3	114	309
310	3	115	310
311	3	116	311
401	4	117	401
402	4	118	402
403	4	119	403
409	4	120	409
410	4	121	410
411	4	122	411

DET 60-A, 61

LAWRENCE E. STONE - ASSESSOR  
Cadastral map for assessment purposes only.  
Compiled under R. & T. Code, Sec. 327.  
Effective Roll Year 2022-2023

408.292.1600  
2464 De La Cruz Blvd., Santa Clara, CA 95050  
www.corporatesigns.com  
CONTRACTOR'S LIC# 765078  
CLASS C45-ELECTRICAL SIGN CONTRACTOR

CLIENT  
525 UNIVERSITY

PROJECT  
**525**  
UNIVERSITY  
  
525 UNIVERSITY AVE, SUITE 200  
PALO ALTO, CA 94301

DRAWING / REVISION DATE  
06/29/23 - YY 02/09/24 - YY  
07/05/23 - YY 02/13/24 - YY  
07/11/23 - YY  
07/17/23 - YY  
07/28/23 - YY  
01/25/24 - YY  
02/06/24 - YY

FILE NAME / LOCATION  
Orchard Commercial\525  
University Ave\\_LUX\Drawings\  
1512 525 University Exterior.cdr

ORDER NUMBER  
**1512**

SIGN TYPE

SHEET TITLE  
PARCEL MAP

All drawings as well as creative content are the property of Corporate Sign Systems. You must have written consent by a Corporate Sign Systems' Officer prior to disclosure, reproduction, or distribution outside of your organization.

PAGE NUMBER  
**25**