



2022 CALIFORNIA CODE WILL APPLY TO THIS PROJECT

- SIGN TYPE A - PRIMARY MONUMENT
- Fabricate and install (x1) internally illuminated primary monument sign, concrete footing. Connecting to power source (BY OTHERS) with dedicated 20amp circuit, photocell, and timer.
- SIGN TYPE B - CANOPY ADDRESS ID
- Fabricate and install (x1) internally illuminated canopy address id, wall mounting. Connecting to power source (BY OTHERS) with dedicated 20amp circuit, photocell, and timer.
- SIGN TYPE C - PROPERTY ID
- Fabricate and install (x1) internally illuminated property id, wall mounting. Connecting to power source (BY OTHERS) with dedicated 20amp circuit, photocell, and timer.
- SIGN TYPE D - OVERHEAD PARKING ID
- Fabricate and install (x1) fco lettering, and painted existing wall overhead parking id. Applied upward light, wall mounting. Connecting to power source (BY OTHERS) with dedicated 20amp circuit, photocell, and timer.
- SIGN TYPE E - BLADE PARKING ID
- Fabricate and install (x1) internally illuminated parking monument it, concrete footing. Connecting to power source (BY OTHERS) with dedicated 20amp circuit, photocell, and timer.

525

UNIVERSITY

PROJECT:

525 UNIVERSITY AVE, SUITE 200
PALO ALTO, CA 94301
EXTERIOR PACKAGE
02/13/2024
Design + Build.



408.292.1600
2464 De La Cruz Blvd., Santa Clara, CA 95050
www.corporatesigns.com
CONTRACTOR'S LIC# 765078
CLASS C45-ELECTRICAL SIGN CONTRACTOR

TABLE OF CONTENTS:

- 1: COVER PAGE
- 2: TABLE OF CONTENTS
- 3: AREA CALCULATIONS
- 4: SIGN ELEMENTS
- 5: SIGN HIERARCHY
- 6: LOCATION PLAN
- 7: LOCATION PLAN - DEMO
- 8: A PRIMARY MONUMENT
- 9: PRIMARY MONUMENT PHOTO ELEVATION
- 10: B ADDRESS ID
- 11: B ADDRESS ID ATTACHMENT
- 12: B ADDRESS ID RENDERING
- 13: C PROPERTY ID
- 14: C PROPERTY ID RENDERING
- 15: C PROP ID SIZE CHART
- 16: D OVERHEAD PARKING
- 17: D OVERHEAD PARKING RENDERING
- 18: D OVERHEAD PARKING ISOMETRIC
- 19: E BLADE PARKING ID
- 20: E BLADE RENDERING
- 21: E BLADE ELEVATION
- 22: SPEC SHEET DETAIL
- 23: WIRING & PROGRAMMING GUIDE
- 24: MOTION DETECTOR SPEC SHEET
- 25: EXISTING SIGN
- 26: PARCEL MAP



408.292.1600
2464 De La Cruz Blvd., Santa Clara, CA 95050
www.corporatesigns.com
CONTRACTOR'S LIC# 765078
CLASS C45-ELECTRICAL SIGN CONTRACTOR

CLIENT
525 UNIVERSITY

PROJECT
525
UNIVERSITY

525 UNIVERSITY AVE, SUITE 200
PALO ALTO, CA 94301

DRAWING / REVISION DATE
06/29/23 - YY 02/09/24 - YY
07/05/23 - YY 02/13/24 - YY
07/11/23 - YY 04/17/24 - YY
07/17/23 - YY 04/25/24 - YY
07/28/23 - YY
01/25/24 - YY
02/06/24 - YY

FILE NAME / LOCATION
Orchard Commercial\525
University Ave_LUX\Drawings\
1512 525 University Exterior.cdr

ORDER NUMBER
1512

SIGN TYPE

SHEET TITLE
TABLE OF CONTENTS

All drawings as well as creative content are the property of Corporate Sign Systems. You must have written consent by a Corporate Sign Systems' Officer prior to disclosure, reproduction, or distribution outside of your organization.

PAGE NUMBER
2



ALLOWABLE SIGNAGE - CALCULATIONS

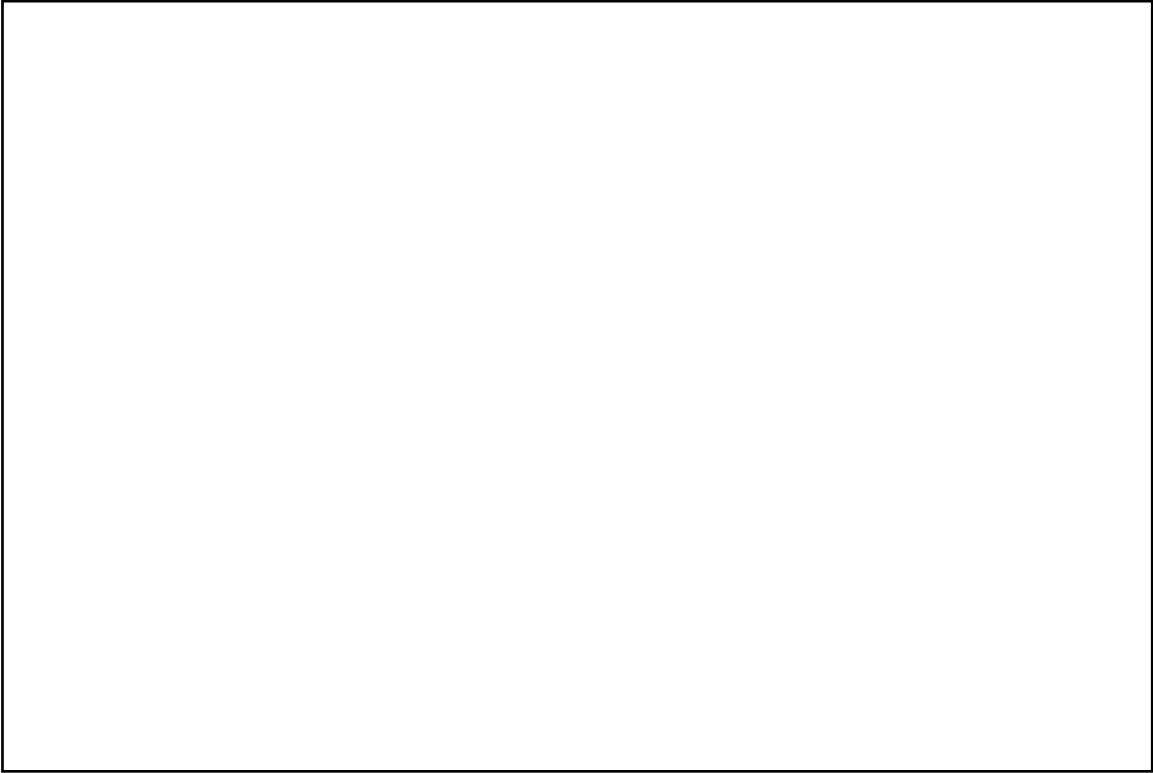
TOTAL SIGN AREA CALCULATIONS

Total Sign Area Calculations in SF

525 UNIVERSITY AVENUE

LOT FRONTAGE	MAXIMUM SIGN AREA	SIGN TYPE	PROPOSED SF	x QTY PROPOSED	x QTY ALLOWED	SIGN AREA ALLOWED	= TOTAL SIGN AREA USED
FT	SF	C. PROPERTY ID (WALL SIGN)	58.5 SF	1	ANY	150 SF (TOTAL AGGREGATE OF ALL WALL SIGNS)	58.5 SF
393 FT		D. OVERHEAD PARKING ID (WALL SIGN)	22.95 SF	1	ANY	150 SF (TOTAL AGGREGATE OF ALL WALL SIGNS)	22.95 SF
						SUBTOTAL =	81.45 SF

SIGN TYPE	PROPOSED SF	x QTY PROPOSED	x QTY ALLOWED	SIGN AREA ALLOWED	= TOTAL SIGN AREA USED
A. PRIMARY MONUMENT ID (DIRECTORY)	20 SF	1	2	REPLACING EXISTING LIKE-FOR-LIKE	20 SF
E. PARKING MONUMENT ID	7.36 SF	1	N/A	N/A	7.36 SF
					SUBTOTAL = 27.36 SF
					TOTAL = 108.81 SF



408.292.1600
2464 De La Cruz Blvd., Santa Clara, CA 95050
www.corporatesigns.com
CONTRACTOR'S LIC# 765078
CLASS C45-ELECTRICAL SIGN CONTRACTOR

CLIENT
525 UNIVERSITY

PROJECT
525
UNIVERSITY

525 UNIVERSITY AVE, SUITE 200
PALO ALTO, CA 94301

DRAWING / REVISION DATE
06/29/23 - YY 02/09/24 - YY
07/05/23 - YY 02/13/24 - YY
07/11/23 - YY 04/17/24 - YY
07/17/23 - YY 04/25/24 - YY
07/28/23 - YY
01/25/24 - YY
02/06/24 - YY

FILE NAME / LOCATION
Orchard Commercial\525
University Ave_LUX\Drawings\
1512 525 University Exterior.cdr

ORDER NUMBER
1512

SIGN TYPE
[Redacted]

SHEET TITLE
CALCULATIONS

All drawings as well as creative content are the property of Corporate Sign Systems. You must have written consent by a Corporate Sign Systems' Officer prior to disclosure, reproduction, or distribution outside of your organization.

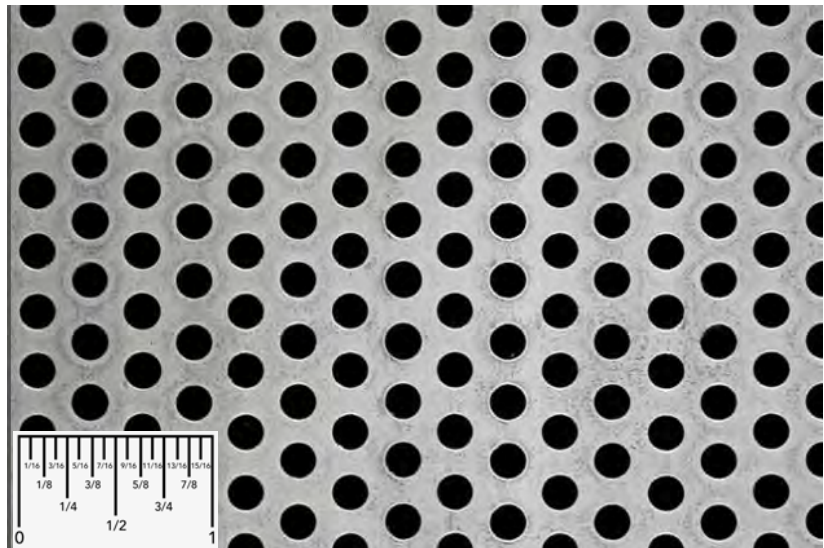
PAGE NUMBER
3

BRAND ARTWORK

525

UNIVERSITY

PATTERN



3/16" ROUND ON 5/16" STAGGER CENTERS
1/8" BAR, 11.95 HPSI, 33% OPEN AREA
ALUMINUM ALLOY 3003-H14

FONTS

Roboto Condensed
ABCDEFGHIJKLMNOPQRSTUVWXYZ
abcdefghijklmnopqrstuvwxyz
1234567890

Roboto Condensed Bold
ABCDEFGHIJKLMNOPQRSTUVWXYZ
abcdefghijklmnopqrstuvwxyz
1234567890

MATERIAL AND COLOR SCHEDULE

M1

aluminum

M2

acrylic

M3

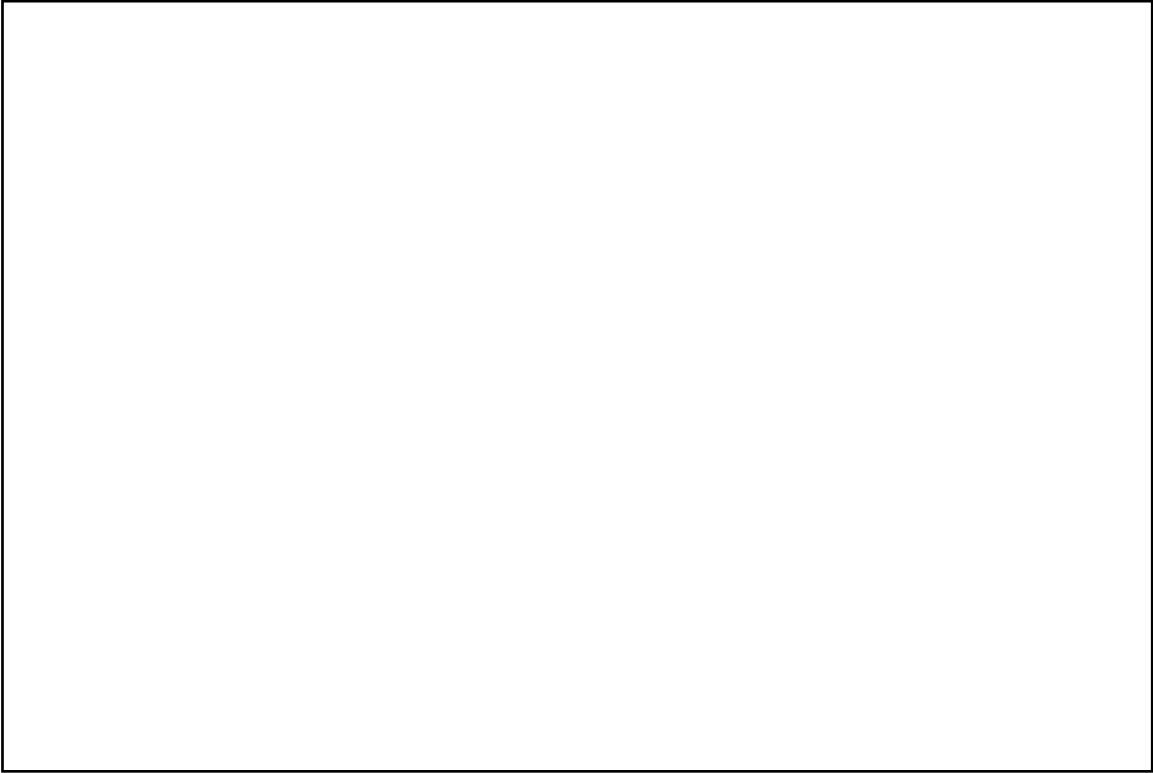
vinyl

C1

Black Umber
MAP30116

C2

White Wonder
MAP 32071



CLIENT
525 UNIVERSITY

PROJECT
525
UNIVERSITY

525 UNIVERSITY AVE, SUITE 200
PALO ALTO, CA 94301

DRAWING / REVISION DATE

06/29/23 - YY 02/09/24 - YY
07/05/23 - YY 02/13/24 - YY
07/11/23 - YY 04/17/24 - YY
07/17/23 - YY 04/25/24 - YY
07/28/23 - YY
01/25/24 - YY
02/06/24 - YY

FILE NAME / LOCATION

Orchard Commercial\525
University Ave_LUX\Drawings\
1512 525 University Exterior.cdr

ORDER NUMBER

1512

SIGN TYPE



SHEET TITLE

SIGN ELEMENTS

All drawings as well as creative content are the property of Corporate Sign Systems. You must have written consent by a Corporate Sign Systems' Officer prior to disclosure, reproduction, or distribution outside of your organization.

PAGE NUMBER

4

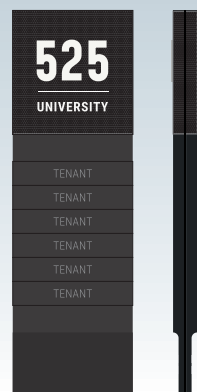
525

EXIT
DO NOT ENTER

WELCOME TO
525 UNIVERSITY

ENTER
MAX. CLEARANCE 6'5"

scale: 3/16" = 1'-0"



scale: 1/4" = 1'-0"

A PRIMARY MONUMENT
B ADDRESS ID

C PROPERTY ID
D OVERHEAD PARKING

E PARKING MONUMENT ID

CLIENT
525 UNIVERSITY

PROJECT
525
UNIVERSITY

525 UNIVERSITY AVE, SUITE 200
PALO ALTO, CA 94301

DRAWING / REVISION DATE

06/29/23 - YY 02/09/24 - YY
07/05/23 - YY 02/13/24 - YY
07/11/23 - YY 04/17/24 - YY
07/17/23 - YY 04/25/24 - YY
07/28/23 - YY
01/25/24 - YY
02/06/24 - YY

FILE NAME / LOCATION

Orchard Commercial\525
University Ave_LUX\Drawings\
1512 525 University Exterior.cdr

ORDER NUMBER

1512

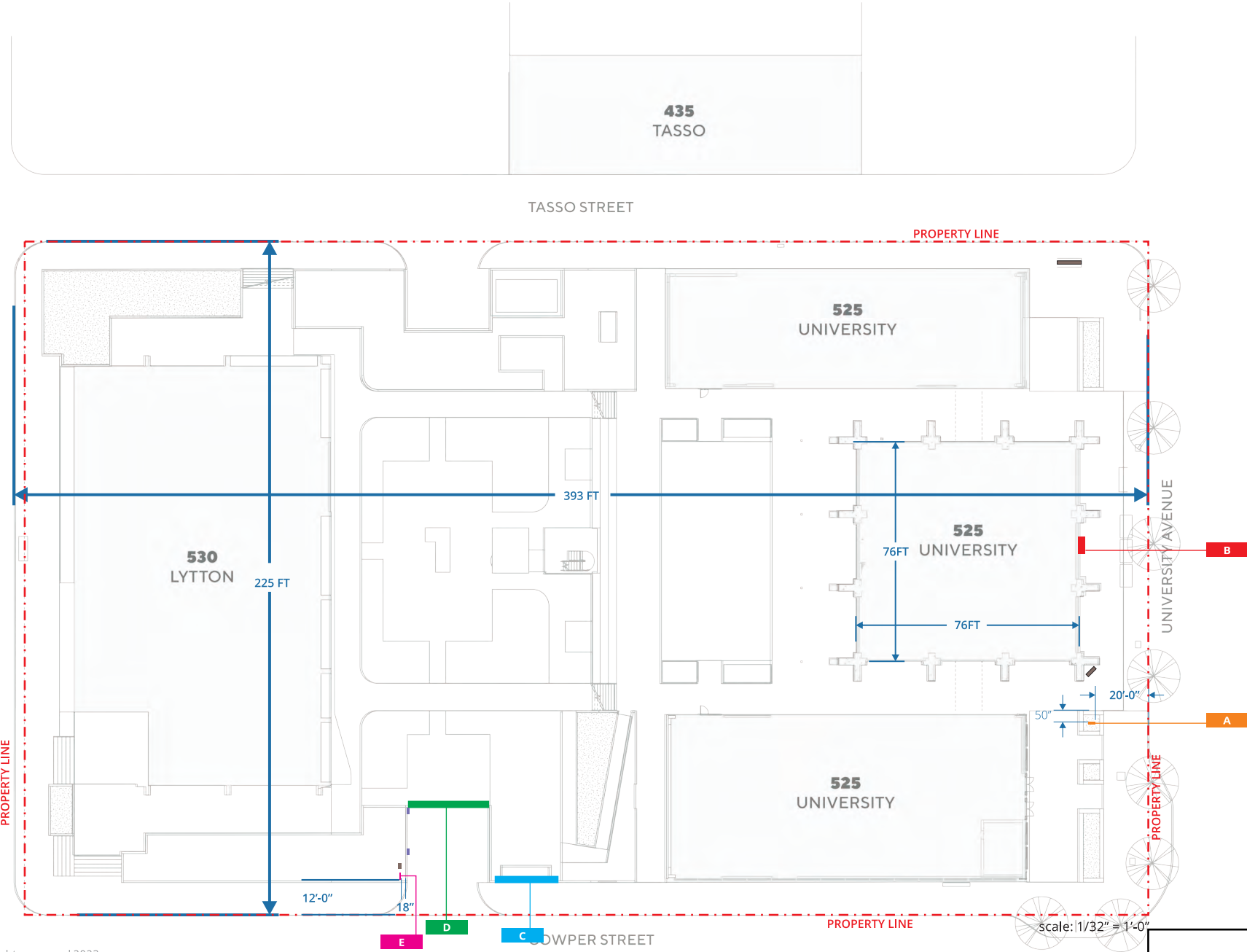
SIGN TYPE

SHEET TITLE
SIGN HIERARCHY

All drawings as well as creative content
are the property of Corporate Sign
Systems. You must have written consent
by a Corporate Sign Systems' Officer prior
to disclosure, reproduction, or distribution
outside of your organization.

PAGE NUMBER

5



© all rights reserved 2023

- A PRIMARY MONUMENT
- B ADDRESS ID
- C PROPERTY ID
- D OVERHEAD PARKING
- E PARKING MONUMENT



408.292.1600
2464 De La Cruz Blvd., Santa Clara, CA 95050
www.corporatesigns.com
CONTRACTOR'S LIC# 765078
CLASS C45-ELECTRICAL SIGN CONTRACTOR

CLIENT
525 UNIVERSITY

PROJECT
525
UNIVERSITY

525 UNIVERSITY AVE, SUITE 200
PALO ALTO, CA 94301

DRAWING / REVISION DATE

06/29/23 - YY 02/09/24 - YY
07/05/23 - YY 02/13/24 - YY
07/11/23 - YY 04/17/24 - YY
07/17/23 - YY 04/25/24 - YY
07/28/23 - YY
01/25/24 - YY
02/06/24 - YY

FILE NAME / LOCATION

Orchard Commercial\525
University Ave_LUX\Drawings\
1512 525 University Exterior.cdr

ORDER NUMBER

1512

SIGN TYPE



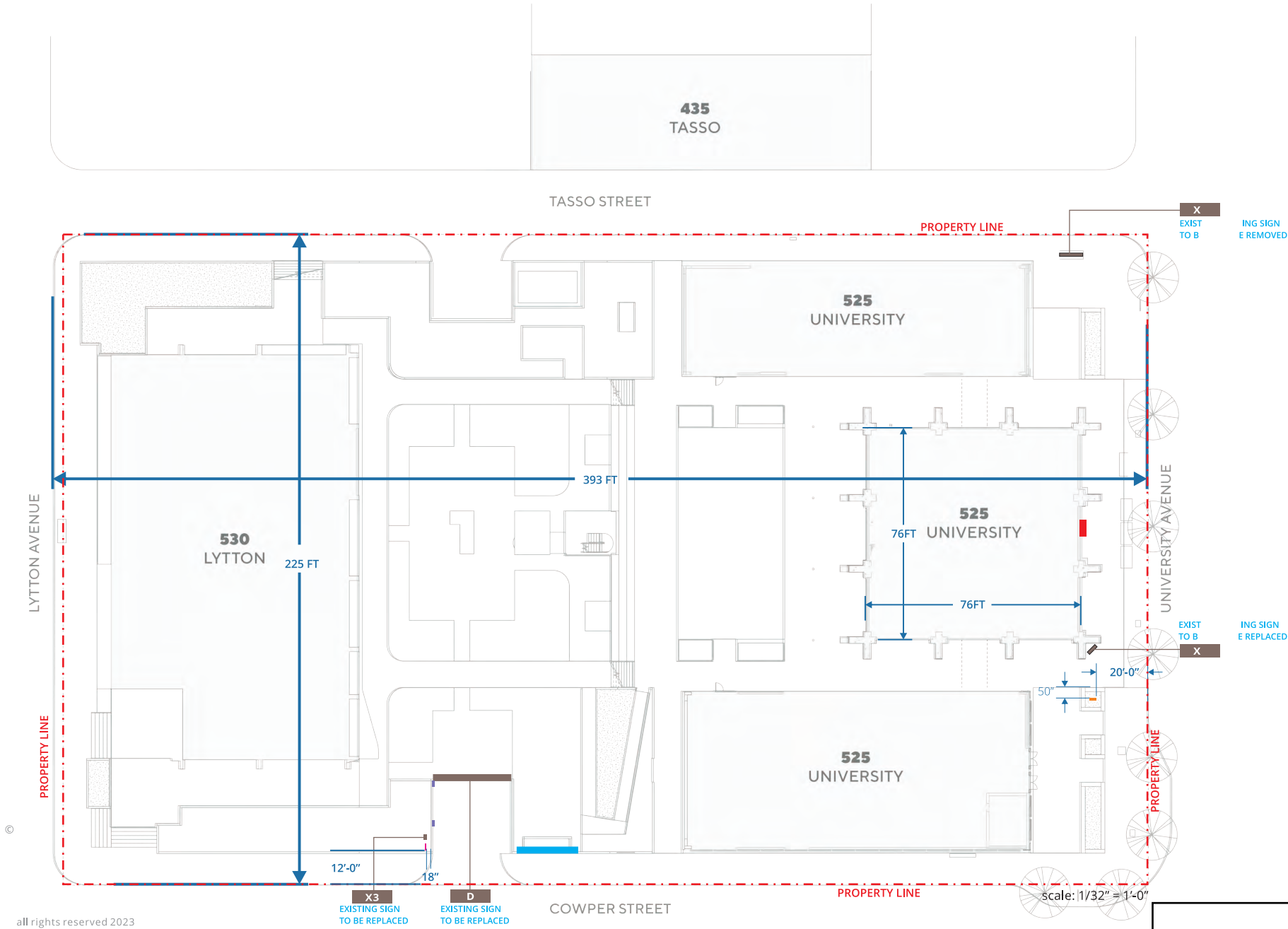
SHEET TITLE

LOCATION PLAN -
PROPOSED

All drawings as well as creative content are the property of Corporate Sign Systems. You must have written consent by a Corporate Sign Systems' Officer prior to disclosure, reproduction, or distribution outside of your organization.

PAGE NUMBER

6



all rights reserved 2023

D	OVERHEAD PARKING
X	EXISTING SIGN

408.292.1600
2464 De La Cruz Blvd., Santa Clara, CA 95050
www.corporatesigns.com
CONTRACTOR'S LIC# 765078
CLASS C45-ELECTRICAL SIGN CONTRACTOR

CLIENT
525 UNIVERSITY

PROJECT
525
UNIVERSITY

525 UNIVERSITY AVE, SUITE 200
PALO ALTO, CA 94301

DRAWING / REVISION DATE
06/29/23 - YY 02/09/24 - YY
07/05/23 - YY 02/13/24 - YY
07/11/23 - YY 04/17/24 - YY
07/17/23 - YY 04/25/24 - YY
07/28/23 - YY
01/25/24 - YY
02/06/24 - YY

FILE NAME / LOCATION
Orchard Commercial\525
University Ave_LUX\Drawings\
1512 525 University Exterior.cdr

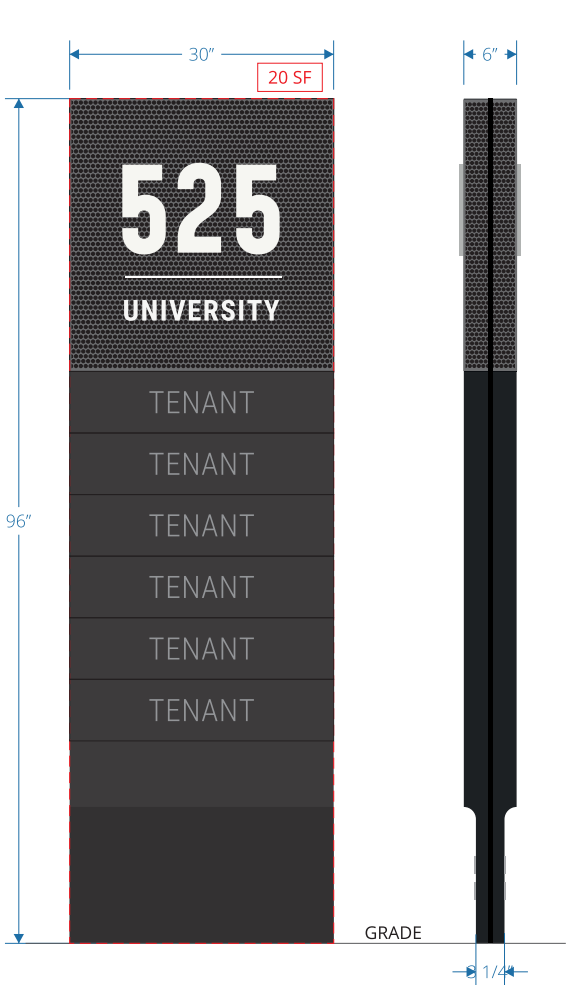
ORDER NUMBER
1512

SIGN TYPE

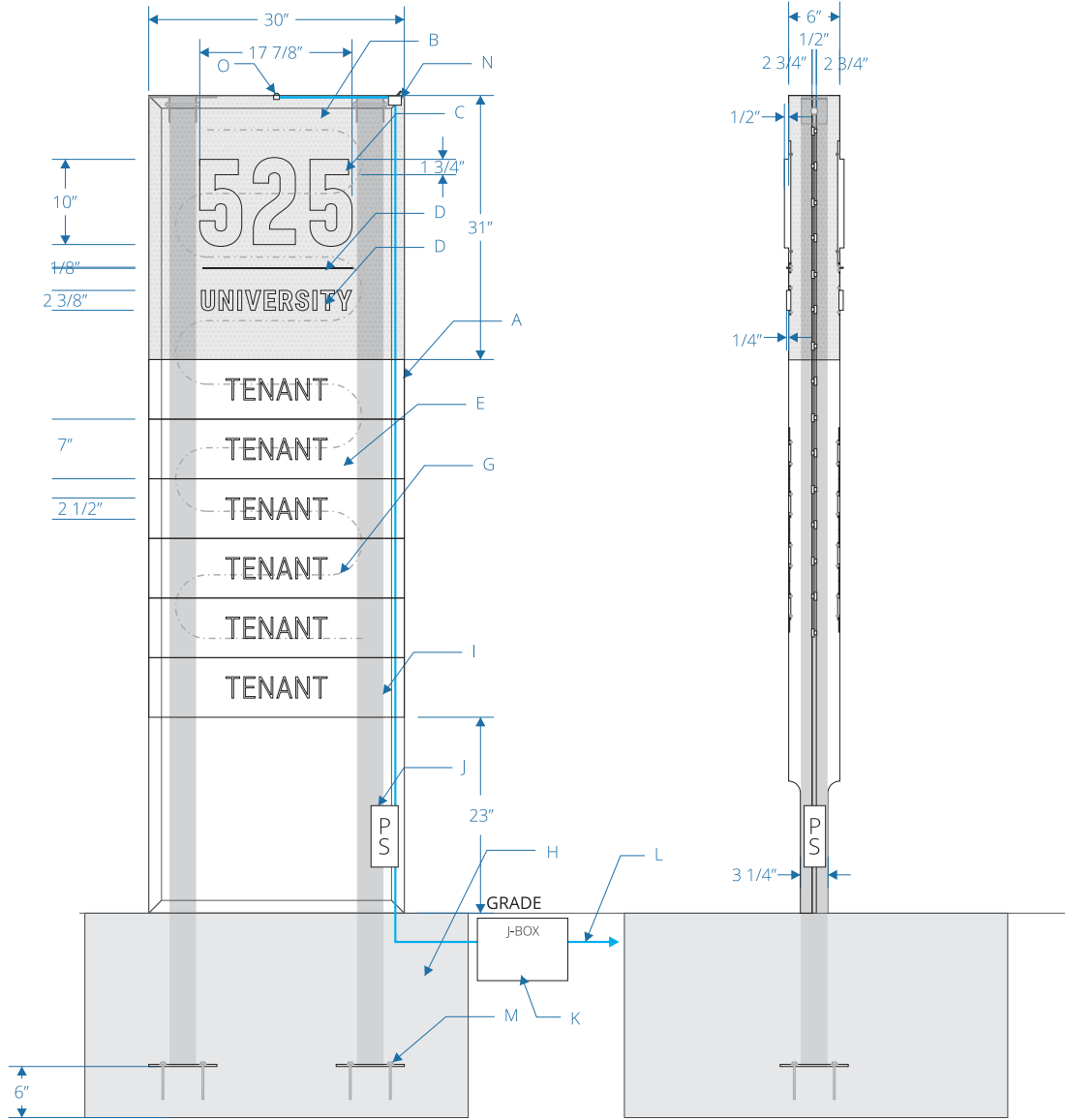
SHEET TITLE
LOCATION PLAN -
DEMO

All drawings as well as creative content are the property of Corporate Sign Systems. You must have written consent by a Corporate Sign Systems' Officer prior to disclosure, reproduction, or distribution outside of your organization.

PAGE NUMBER
7



1 FRONT VIEW
scale: 3/4" = 1'-0"



2 FRONT VIEW - DETAIL
scale: 3/4" = 1'-0"

3 SIDE VIEW - DETAIL
scale: 3/4" = 1'-0"

DESCRIPTION	QTY: 1
A. 96"h x 30"w x 6"d -3 1/4"d fabricated aluminum cabinet, painted C1 black umber	
B. 31"h x 30"w x 6"d fabricated perforated panel on the top portion of sign cabinet	
C. 10"h x 1/2" thick push thru acrylic address number id, painted C2 white wonder	
D. 2 3/8"h x 1/4" thick push thru acrylic lettering and 1/8" rule line, painted C2 white wonder	
E. 7"h x 30"w removable tenant panel, painted C1 black umber; with 2 1/2"h x 1/4"d flush face acrylic push thru tenant name, painted C2 white wonder	
G. LEDs	
H. concrete footing (see engineering page for detail)	
I. 3" x 3" aluminum tube post with 1/2"dia galvanized steel thru bolt	
J. 110v-277v ul listed power supply	
K. christy box by OTHERS	
L. primary line 110-277v on dedicated circuit 20AMP by others	
M. 1/4" thick aluminum plate and expansion bolt mounted with waterproofing by bothers	
N. disconnect switch box	
O. photocell	

CLIENT
525 UNIVERSITY

PROJECT
525
UNIVERSITY

525 UNIVERSITY AVE, SUITE 200
PALO ALTO, CA 94301

DRAWING / REVISION DATE
06/29/23 - YY 02/09/24 - YY
07/05/23 - YY 02/13/24 - YY
07/11/23 - YY 04/17/24 - YY
07/17/23 - YY 04/25/24 - YY
07/28/23 - YY
01/25/24 - YY
02/06/24 - YY

FILE NAME / LOCATION
Orchard Commercial\525
University Ave_LUX\Drawings\
1512 525 University Exterior.cdr

ORDER NUMBER
1512

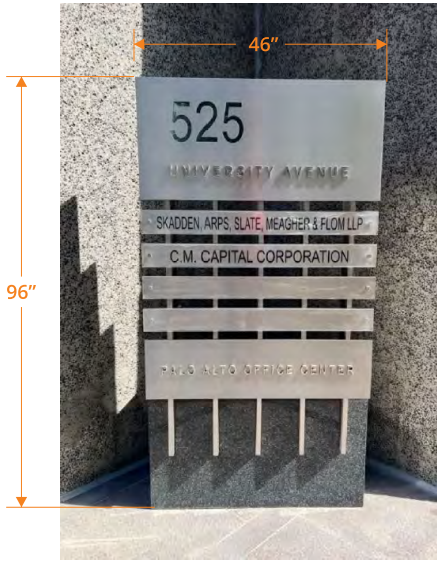
SIGN TYPE
A

SHEET TITLE
PRIMARY MONUMENT

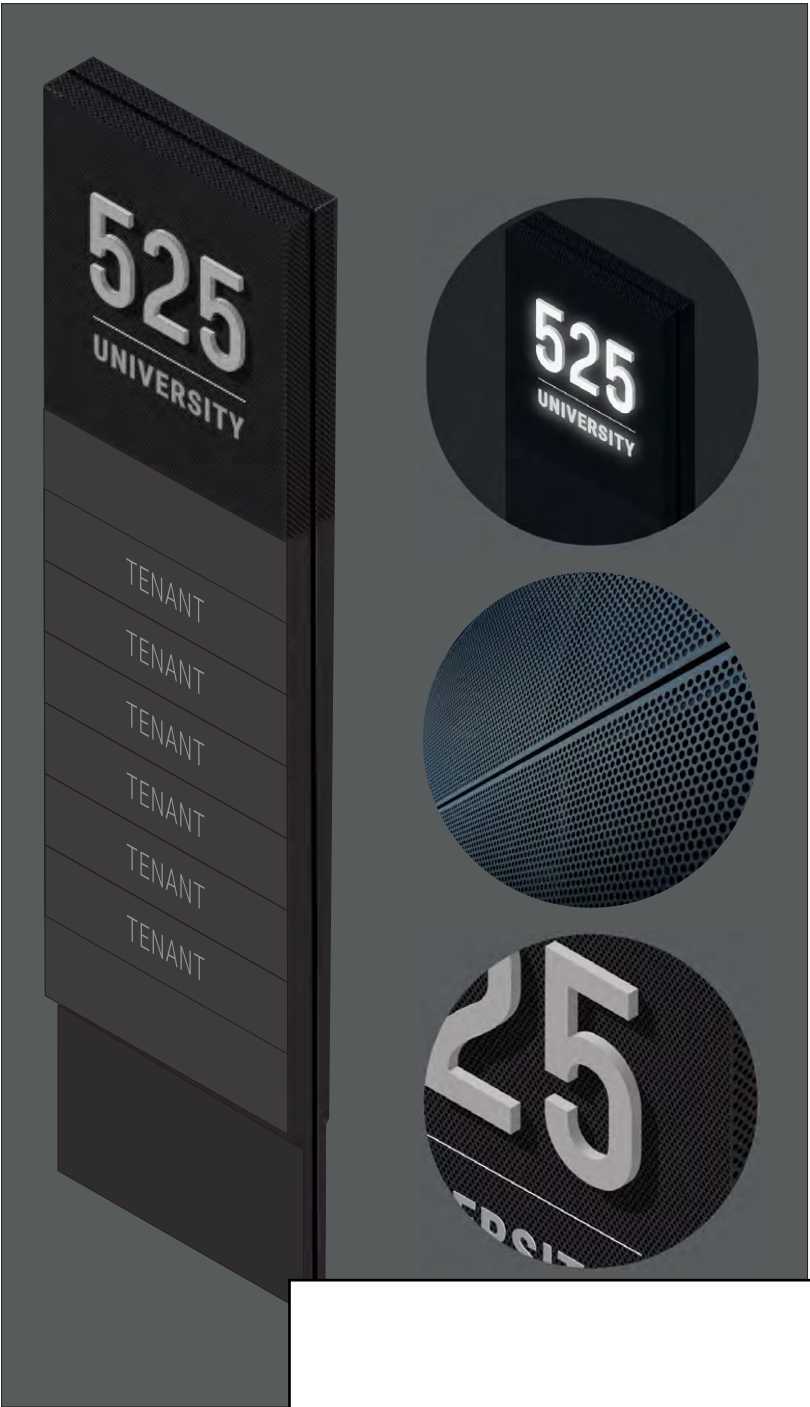
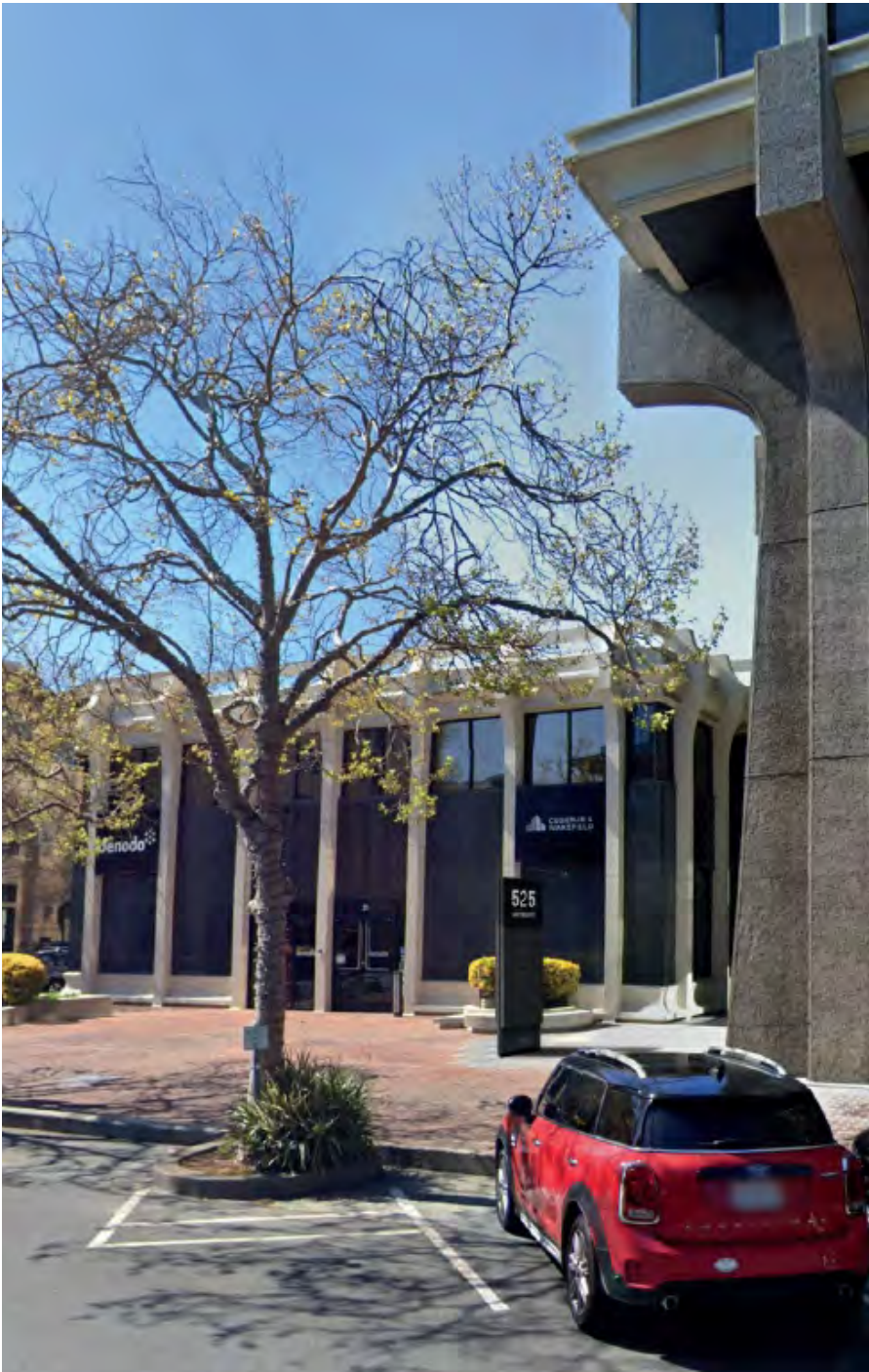
All drawings as well as creative content are the property of Corporate Sign Systems. You must have written consent by a Corporate Sign Systems' Officer prior to disclosure, reproduction, or distribution outside of your organization.

PAGE NUMBER
8

This sign is intended to be installed in accordance with the requirements of Article 600 of the National Electrical Code and/or other applicable local codes. This includes proper grounding and bonding of the sign.



EXISTING SIGN TO BE REPLACED



CLIENT
525 UNIVERSITY

PROJECT
525
UNIVERSITY

525 UNIVERSITY AVE, SUITE 200
PALO ALTO, CA 94301

DRAWING / REVISION DATE
06/29/23 - YY 02/09/24 - YY
07/05/23 - YY 02/13/24 - YY
07/11/23 - YY 04/17/24 - YY
07/17/23 - YY 04/25/24 - YY
07/28/23 - YY
01/25/24 - YY
02/06/24 - YY

FILE NAME / LOCATION
Orchard Commercial\525
University Ave_LUX\Drawings\
1512 525 University Exterior.cdr

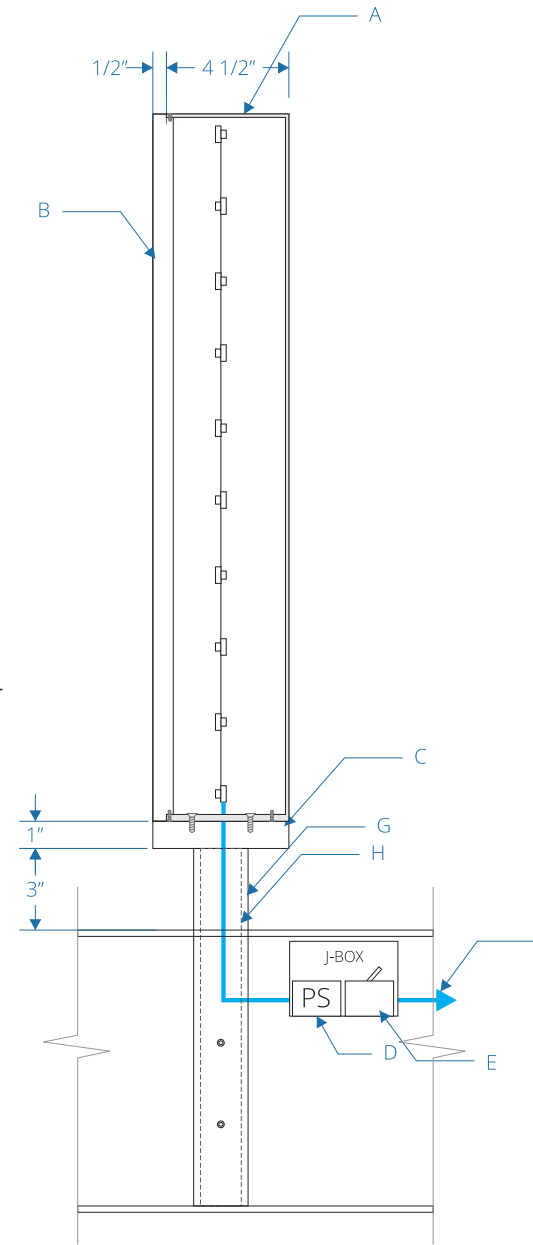
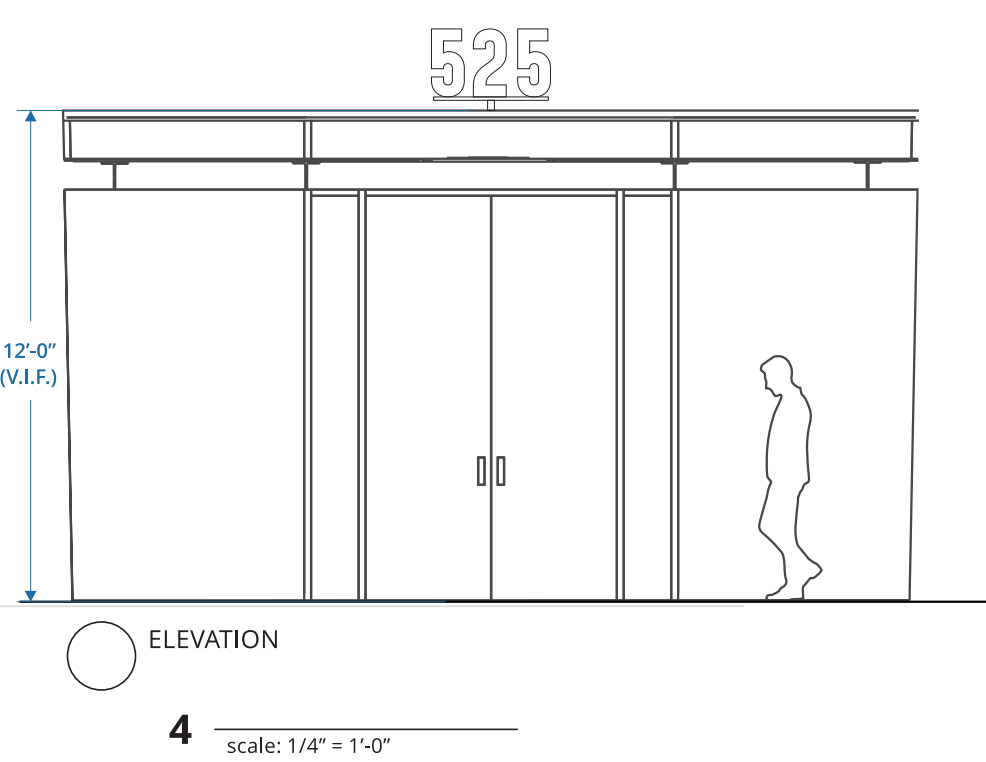
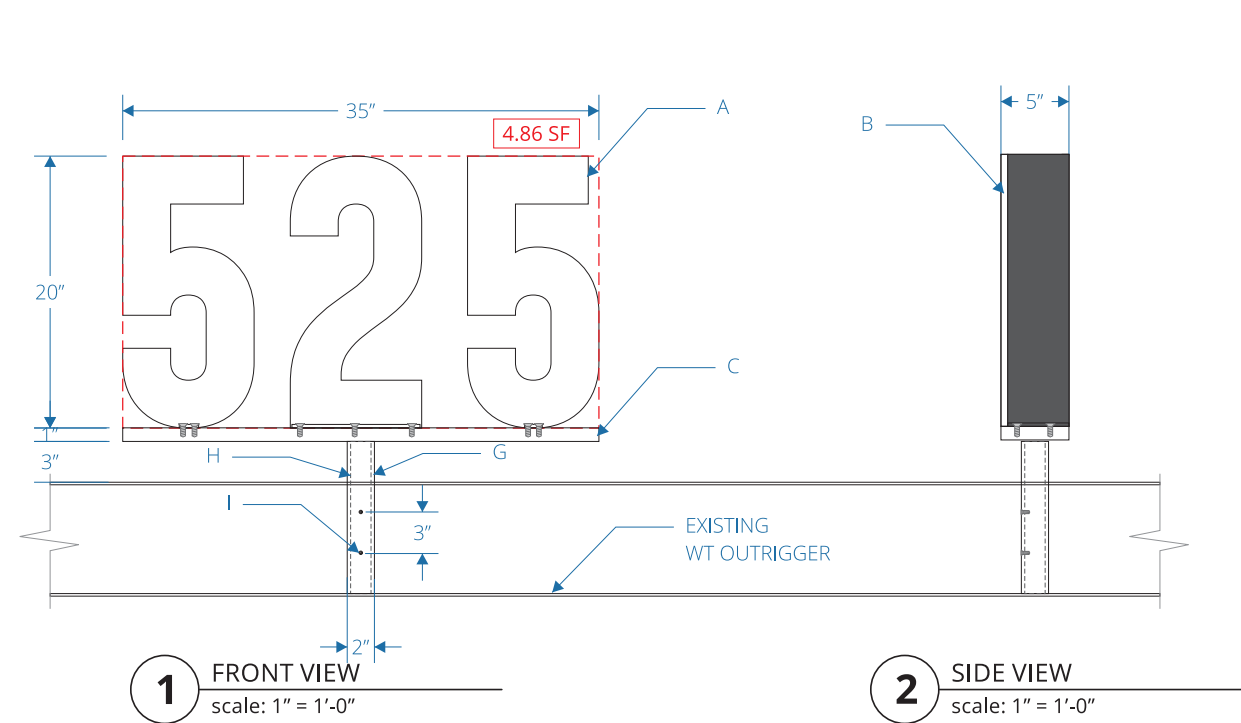
ORDER NUMBER
1512

SIGN TYPE
A

SHEET TITLE
PRIMARY MONUMENT
(PHOTO ELEVATION)

All drawings as well as creative content
are the property of Corporate Sign
Systems. You must have written consent
by a Corporate Sign Systems' Officer prior
to disclosure, reproduction, or distribution
outside of your organization.

PAGE NUMBER
9



3 SIDE VIEW - DETAIL
scale: 2" = 1'-0"

DESCRIPTION	QTY: 1
A. 20"h x 5"d fabricated aluminum lettering, internally illuminated, 4"d aluminum returns painted C1 umber black, and acrylic face and back painted C2 white wonder	
B. 1/2"d face acrylic, painted C2 white wonder	
C. 1/4" thick aluminum plate, painted C2 white wonder, and attached to canopy with 3/8"dia - 16 x 4"L x 18-8 stainless steel hex drive flat head screw with steel spacer	
D. 110v-277v ul listed power supply	
E. j-box and disconnect switch box by others	
F. primary line 110-277v on dedicated circuit 20AMP by others	
G. 2" x 2" x 1/4" steel square aluminum tube, fully welded to top of WT outrigger by GC (see engineering for detail)	
H. 1 1/2" x 1 1/2" x 1/8" steel square aluminum tube sleeves into 2" x 2" x 1/4" aluminum tube (see engineering for detail)	
I. stainless steel counter-sunk drill and tap bolt	

CLIENT
525 UNIVERSITY

PROJECT
525
UNIVERSITY

525 UNIVERSITY AVE, SUITE 200
PALO ALTO, CA 94301

DRAWING / REVISION DATE
06/29/23 - YY 02/09/24 - YY
07/05/23 - YY 02/13/24 - YY
07/11/23 - YY 04/17/24 - YY
07/17/23 - YY 04/25/24 - YY
07/28/23 - YY
01/25/24 - YY
02/06/24 - YY

FILE NAME / LOCATION
Orchard Commercial\525
University Ave_LUX\Drawings\
1512 525 University Exterior.cdr

ORDER NUMBER
1512

SIGN TYPE
B

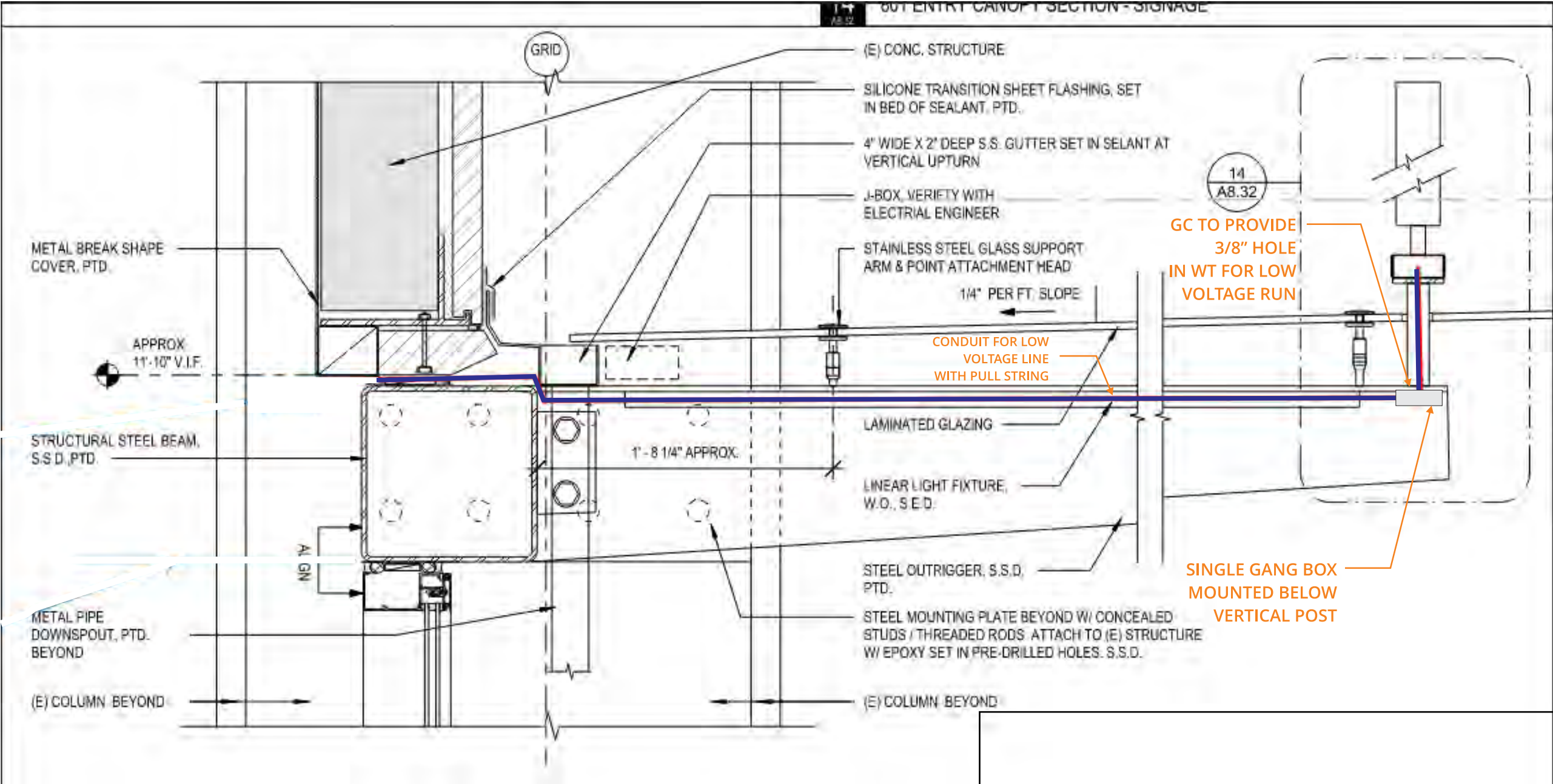
SHEET TITLE
ADDRESS ID

All drawings as well as creative content are the property of Corporate Sign Systems. You must have written consent by a Corporate Sign Systems' Officer prior to disclosure, reproduction, or distribution outside of your organization.

PAGE NUMBER
10

This sign is intended to be installed in accordance with the requirements of Article 600 of the National Electrical Code and/or other applicable local codes. This includes proper grounding and bonding of the sign.

ENTRY CANOPY CONNECTION TO (E) BUILDING - SECTION



CLIENT
525 UNIVERSITY

PROJECT
525
UNIVERSITY

525 UNIVERSITY AVE, SUITE 200
PALO ALTO, CA 94301

DRAWING / REVISION DATE

06/29/23 - YY 02/09/24 - YY
07/05/23 - YY 02/13/24 - YY
07/11/23 - YY 04/17/24 - YY
07/17/23 - YY 04/25/24 - YY
07/28/23 - YY
01/25/24 - YY
02/06/24 - YY

FILE NAME / LOCATION

Orchard Commercial\525
University Ave_LUX\Drawings\
1512 525 University Exterior.cdr

ORDER NUMBER

1512

SIGN TYPE

B

SHEET TITLE
ADDRESS ID

All drawings as well as creative content
are the property of Corporate Sign
Systems. You must have written consent
by a Corporate Sign Systems' Officer prior
to disclosure, reproduction, or distribution
outside of your organization.

PAGE NUMBER

11



CLIENT
525 UNIVERSITY

PROJECT
525
UNIVERSITY

525 UNIVERSITY AVE, SUITE 200
PALO ALTO, CA 94301

DRAWING / REVISION DATE
06/29/23 - YY 02/09/24 - YY
07/05/23 - YY 02/13/24 - YY
07/11/23 - YY 04/17/24 - YY
07/17/23 - YY 04/25/24 - YY
07/28/23 - YY
01/25/24 - YY
02/06/24 - YY

FILE NAME / LOCATION
Orchard Commercial\525
University Ave_LUX\Drawings\
1512 525 University Exterior.cdr

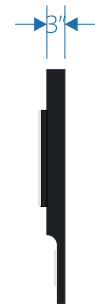
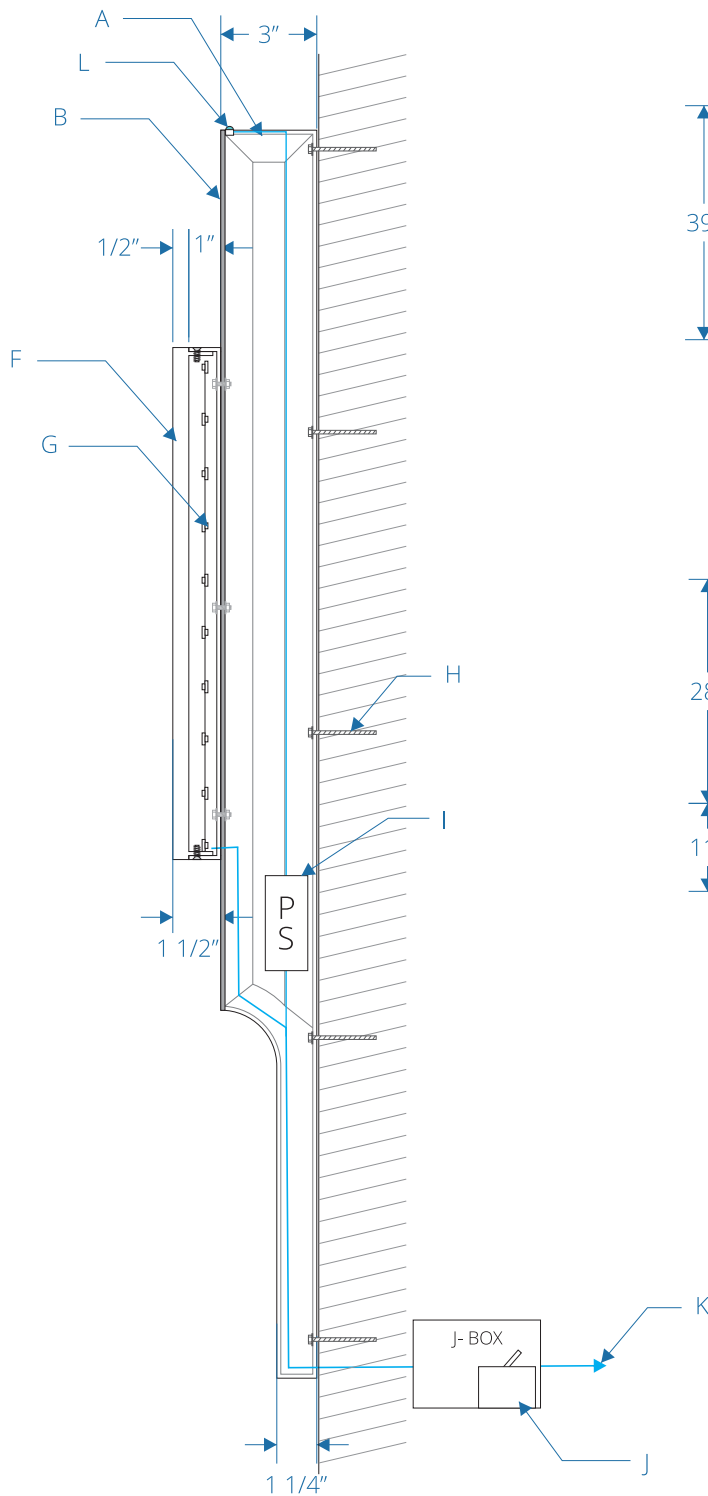
ORDER NUMBER
1512

SIGN TYPE
B

SHEET TITLE
ADDRESS ID

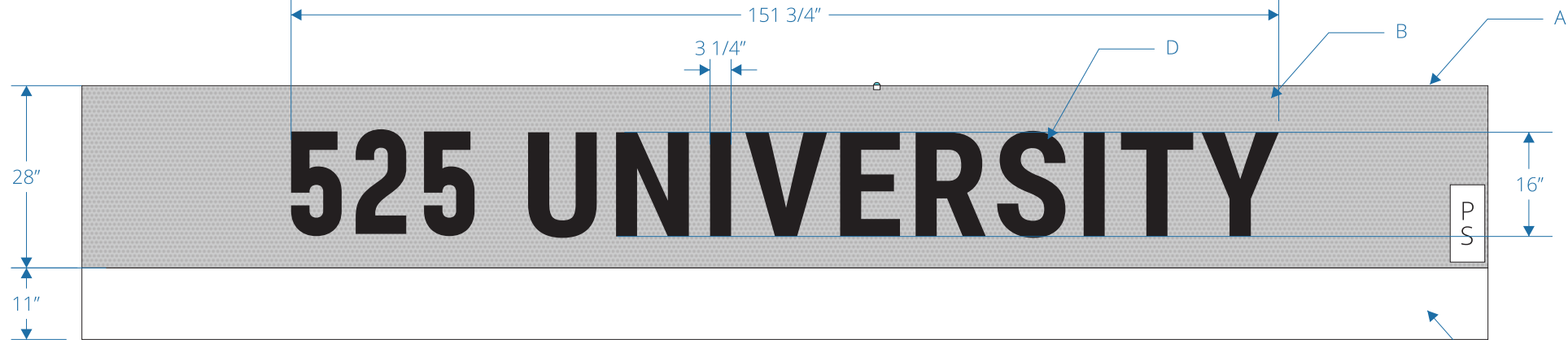
All drawings as well as creative content are the property of Corporate Sign Systems. You must have written consent by a Corporate Sign Systems' Officer prior to disclosure, reproduction, or distribution outside of your organization.

PAGE NUMBER
12



1 FRONT VIEW
scale: 3/8" = 1'-0"

2 SIDE VIEW
scale: 3/8" = 1'-0"



3 FRONT VIEW - DETAIL
scale: 1/2" = 1'-0"

4 SIDE VIEW - DETAIL
scale: 2" = 1'-0"

- DESCRIPTION QTY: 1
- A. 39"h x 216"w x 3"d - 1 1/2"d fabricated aluminum cabinet with face perforated on the top portion, painted C1 umber black
- B. 1/8" thick perforated aluminum face
- C. bottom curved portion of fabricated aluminum sign cabinet at 1 1/2"d, painted C1 umber black
- D. 16"h x 1 1/2"d fabricated aluminum lettering with 1/2" thick acrylic face lit mount to sign face cabinet
- F. 1/2" thick acrylic face, painted C2 white wonder
- G. LEDs
- H. attached to existing wall with tapcon concrete anchor
- I. 110v-277v ul listed power supply
- J. [christy box and disconnect switch box by others](#)
- K. [primary line 110-277v on dedicated circuit 20AMP by others](#)
- L. photocell

This sign is intended to be installed in accordance with the requirements of Article 600 of the National Electrical Code and/or other applicable local codes. This includes proper grounding and bonding of the sign.

CLIENT
525 UNIVERSITY

PROJECT
525
UNIVERSITY

525 UNIVERSITY AVE, SUITE 200
PALO ALTO, CA 94301

DRAWING / REVISION DATE

06/29/23 - YY 02/09/24 - YY
07/05/23 - YY 02/13/24 - YY
07/11/23 - YY 04/17/24 - YY
07/17/23 - YY 04/25/24 - YY
07/28/23 - YY
01/25/24 - YY
02/06/24 - YY

FILE NAME / LOCATION

Orchard Commercial\525
University Ave_LUX\Drawings\
1512 525 University Exterior.cdr

ORDER NUMBER

1512

SIGN TYPE

C

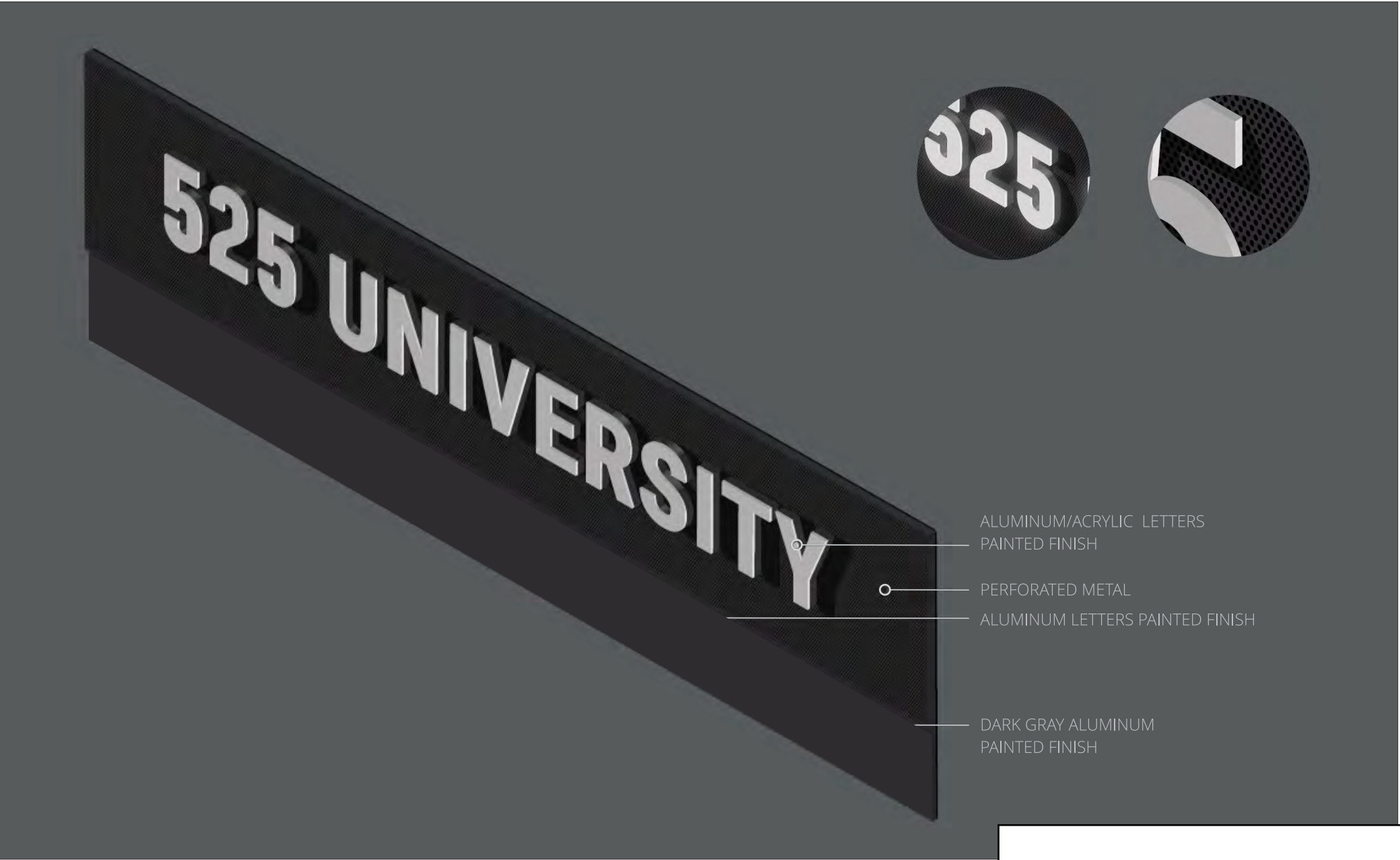
SHEET TITLE

PROPERTY ID

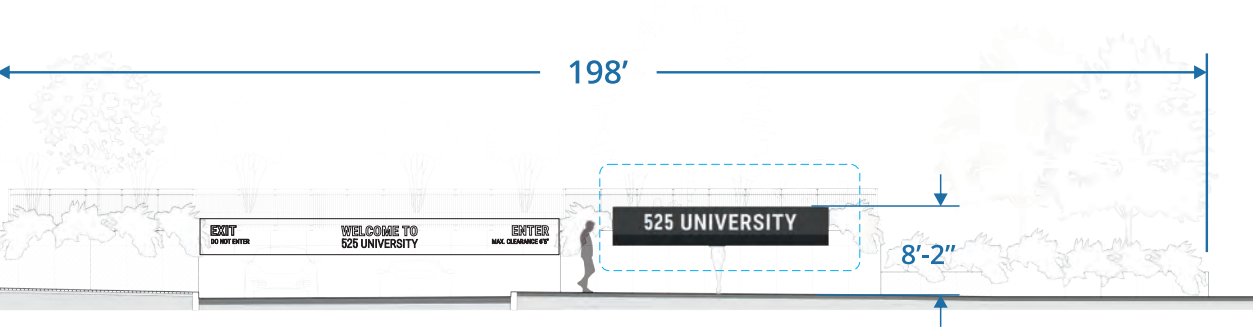
All drawings as well as creative content are the property of Corporate Sign Systems. You must have written consent by a Corporate Sign Systems' Officer prior to disclosure, reproduction, or distribution outside of your organization.

PAGE NUMBER

13



5 RENDERING
scale: NTS



6 ELEVATION
scale: 1/16" = 1'-0"

CLIENT
525 UNIVERSITY

PROJECT
525
UNIVERSITY

525 UNIVERSITY AVE, SUITE 200
PALO ALTO, CA 94301

DRAWING / REVISION DATE
06/29/23 - YY 02/09/24 - YY
07/05/23 - YY 02/13/24 - YY
07/11/23 - YY 04/17/24 - YY
07/17/23 - YY 04/25/24 - YY
07/28/23 - YY
01/25/24 - YY
02/06/24 - YY

FILE NAME / LOCATION
Orchard Commercial\525
University Ave_LUX\Drawings\
1512 525 University Exterior.cdr

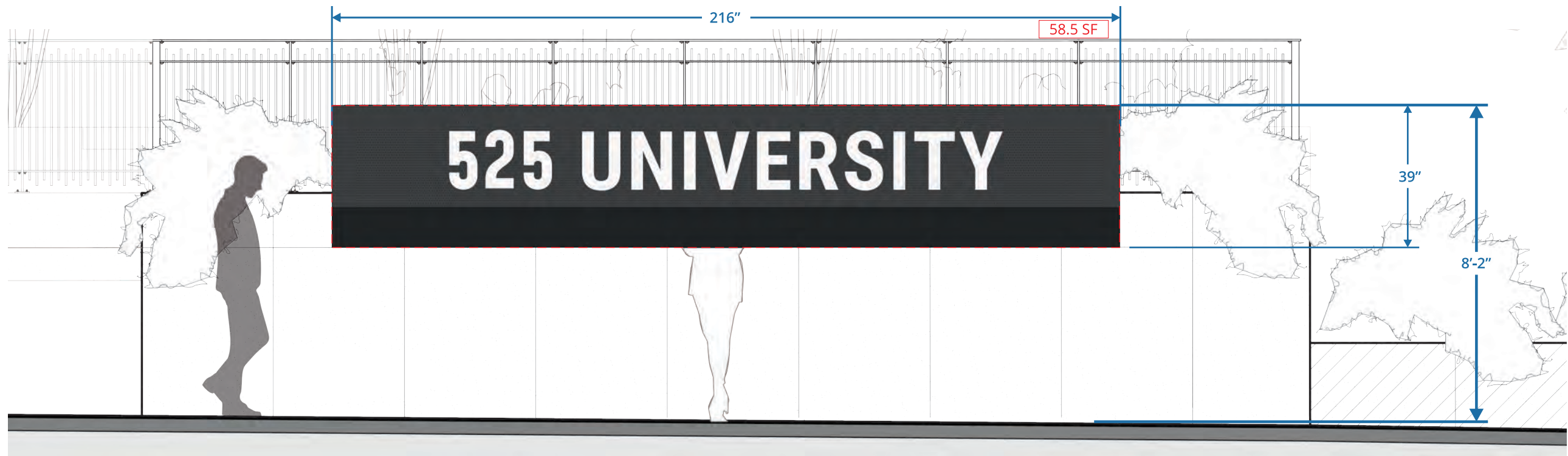
ORDER NUMBER
1512

SIGN TYPE
C

SHEET TITLE
PROPERTY ID

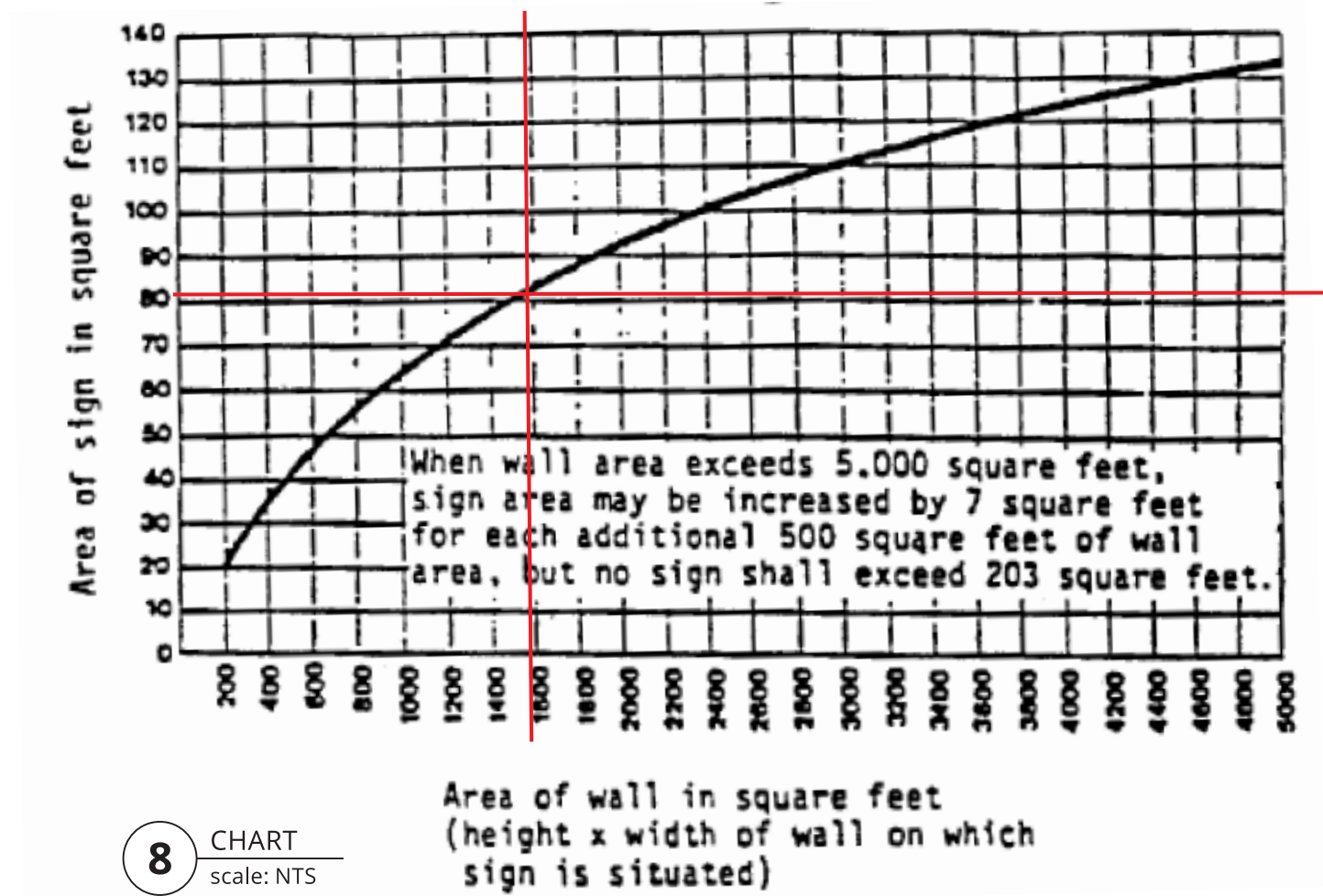
All drawings as well as creative content are the property of Corporate Sign Systems. You must have written consent by a Corporate Sign Systems' Officer prior to disclosure, reproduction, or distribution outside of your organization.

PAGE NUMBER
14



7 ELEVATION - ENLARGED
scale: 3/8" = 1'-0"

WALL SIGNS: COMBINED SIGN TYPE C AND SIGN TYPE D



8 CHART
scale: NTS

CLIENT
525 UNIVERSITY

PROJECT
525
UNIVERSITY

525 UNIVERSITY AVE, SUITE 200
PALO ALTO, CA 94301

DRAWING / REVISION DATE

06/29/23 - YY 02/09/24 - YY
07/05/23 - YY 02/13/24 - YY
07/11/23 - YY 04/17/24 - YY
07/17/23 - YY 04/25/24 - YY
07/28/23 - YY
01/25/24 - YY
02/06/24 - YY

FILE NAME / LOCATION

Orchard Commercial\525
University Ave_LUX\Drawings\
1512 525 University Exterior.cdr

ORDER NUMBER

1512

SIGN TYPE

C

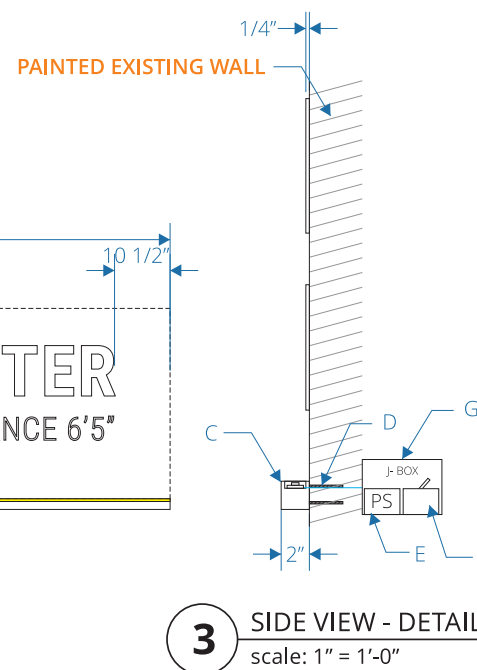
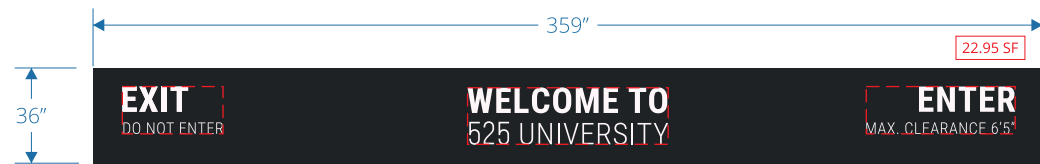
SHEET TITLE

PROPERTY ID

All drawings as well as creative content
are the property of Corporate Sign
Systems. You must have written consent
by a Corporate Sign Systems' Officer prior
to disclosure, reproduction, or distribution
outside of your organization.

PAGE NUMBER

15



EXISTING SIGN
TO BE REPLACED

DESCRIPTION	QTY: 1
A. existing concrete wall, painted C1 umber black	
B. 1/4" thick fco acrylic lettering, painted C2 white	
C. fabricated aluminum race box with upward light mounted to base of sign, painted C1 umber black	
D. attached to wall with stud mounting	
E. 110v-277v ul listed power supply	
F. J-box and disconnect switch box by others	
G. primary line 110-277v on dedicated circuit 20AMP by others	

0
corporate™
SIGN SYSTEMS

408.292.1600
2464 De La Cruz Blvd., Santa Clara, CA 95050
www.corporatesigns.com
CONTRACTOR'S LIC# 765078
CLASS C45-ELECTRICAL SIGN CONTRACTOR

CLIENT
525 UNIVERSITY

PROJECT
525
UNIVERSITY

525 UNIVERSITY AVE, SUITE 200
PALO ALTO, CA 94301

DRAWING / REVISION DATE

06/29/23 - YY 02/09/24 - YY
07/05/23 - YY 02/13/24 - YY
07/11/23 - YY 04/17/24 - YY
07/17/23 - YY 04/25/24 - YY
07/28/23 - YY
01/25/24 - YY
02/06/24 - YY

FILE NAME / LOCATION

Orchard Commercial\525
University Ave_LUX\Drawings\
1512 525 University Exterior.cdr

ORDER NUMBER

1512

SIGN TYPE

D

SHEET TITLE

OVERHEAD PARKING ID

All drawings as well as creative content are the property of Corporate Sign Systems. You must have written consent by a Corporate Sign Systems' Officer prior to disclosure, reproduction, or distribution outside of your organization.

PAGE NUMBER

16

CLIENT
525 UNIVERSITY

PROJECT
525
UNIVERSITY

525 UNIVERSITY AVE, SUITE 200
PALO ALTO, CA 94301

DRAWING / REVISION DATE
06/29/23 - YY 02/09/24 - YY
07/05/23 - YY 02/13/24 - YY
07/11/23 - YY 04/17/24 - YY
07/17/23 - YY 04/25/24 - YY
07/28/23 - YY
01/25/24 - YY
02/06/24 - YY

FILE NAME / LOCATION
Orchard Commercial\525
University Ave_LUX\Drawings\
1512 525 University Exterior.cdr

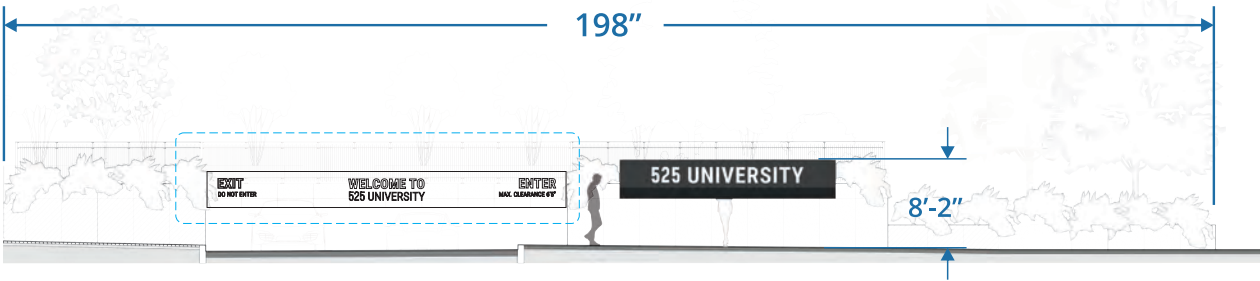
ORDER NUMBER
1512

SIGN TYPE
D

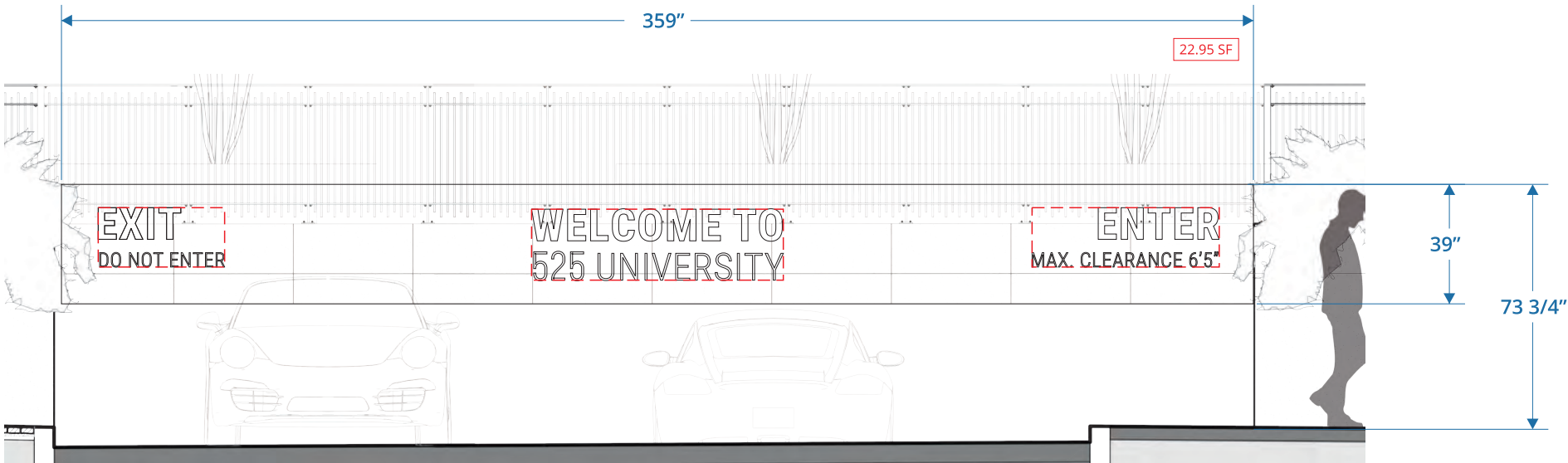
SHEET TITLE
OVERHEAD PARKING ID

All drawings as well as creative content are the property of Corporate Sign Systems. You must have written consent by a Corporate Sign Systems' Officer prior to disclosure, reproduction, or distribution outside of your organization.

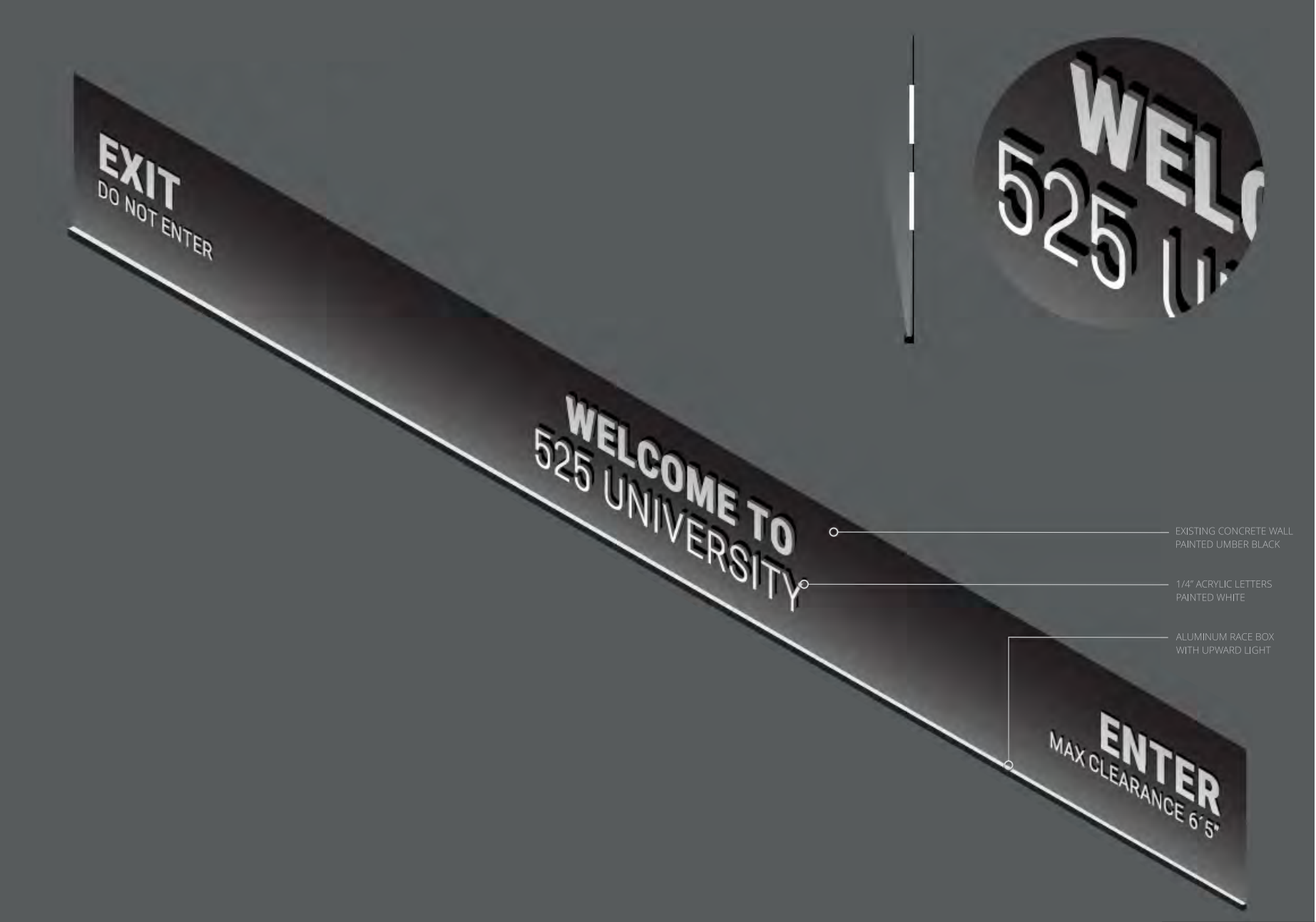
PAGE NUMBER
17



5 ELEVATION
scale: 1/16" = 1'-0"



6 ELEVATION - ENLARGED
scale: 1/4" = 1'-0"



CLIENT
525 UNIVERSITY

PROJECT
525
UNIVERSITY

525 UNIVERSITY AVE, SUITE 200
PALO ALTO, CA 94301

DRAWING / REVISION DATE

06/29/23 - YY 02/09/24 - YY
07/05/23 - YY 02/13/24 - YY
07/11/23 - YY 04/17/24 - YY
07/17/23 - YY 04/25/24 - YY
07/28/23 - YY
01/25/24 - YY
02/06/24 - YY

FILE NAME / LOCATION

Orchard Commercial\525
University Ave_LUX\Drawings\
1512 525 University Exterior.cdr

ORDER NUMBER

1512

SIGN TYPE

D

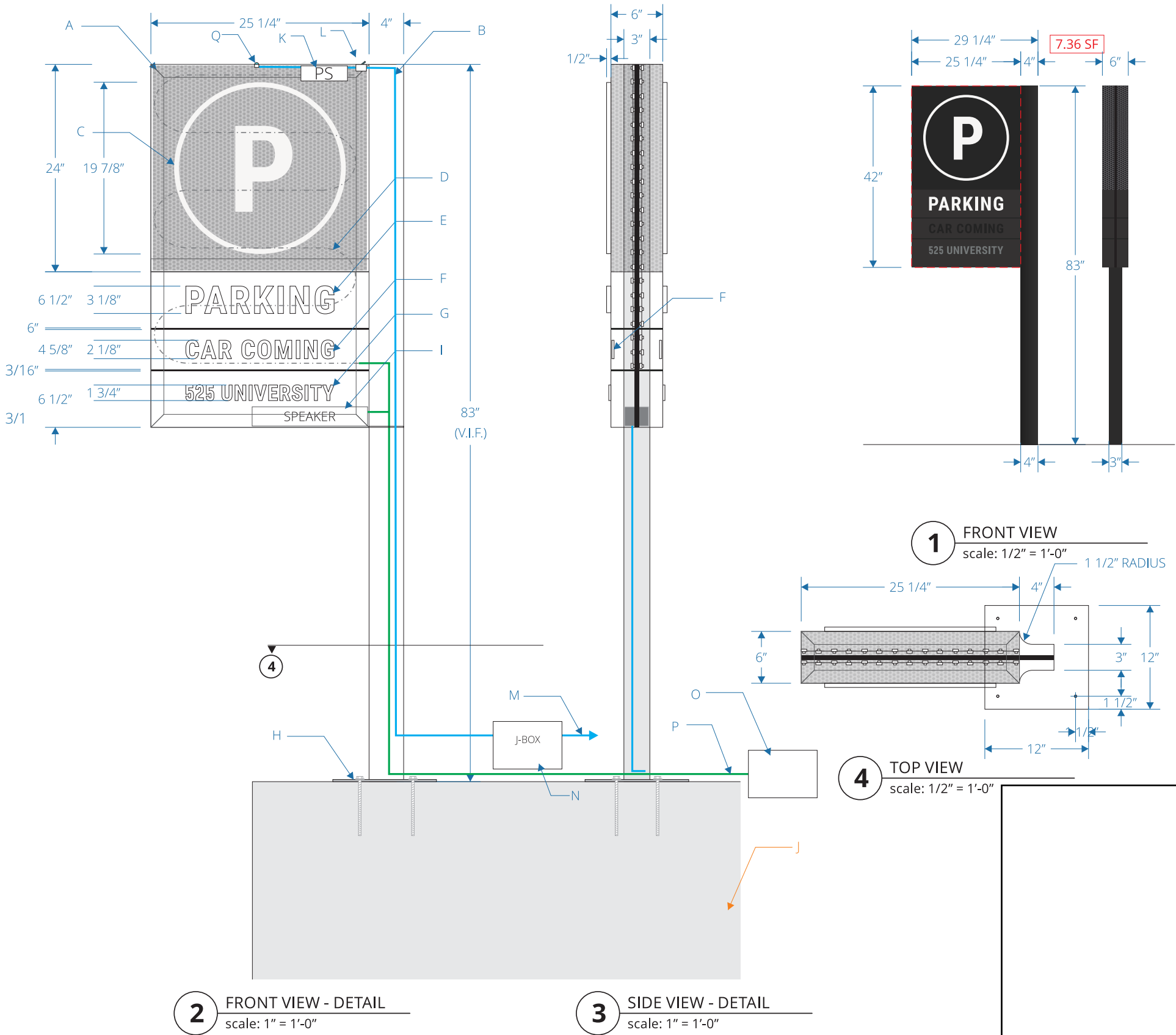
SHEET TITLE

OVERHEAD PARKING ID

All drawings as well as creative content are the property of Corporate Sign Systems. You must have written consent by a Corporate Sign Systems' Officer prior to disclosure, reproduction, or distribution outside of your organization.

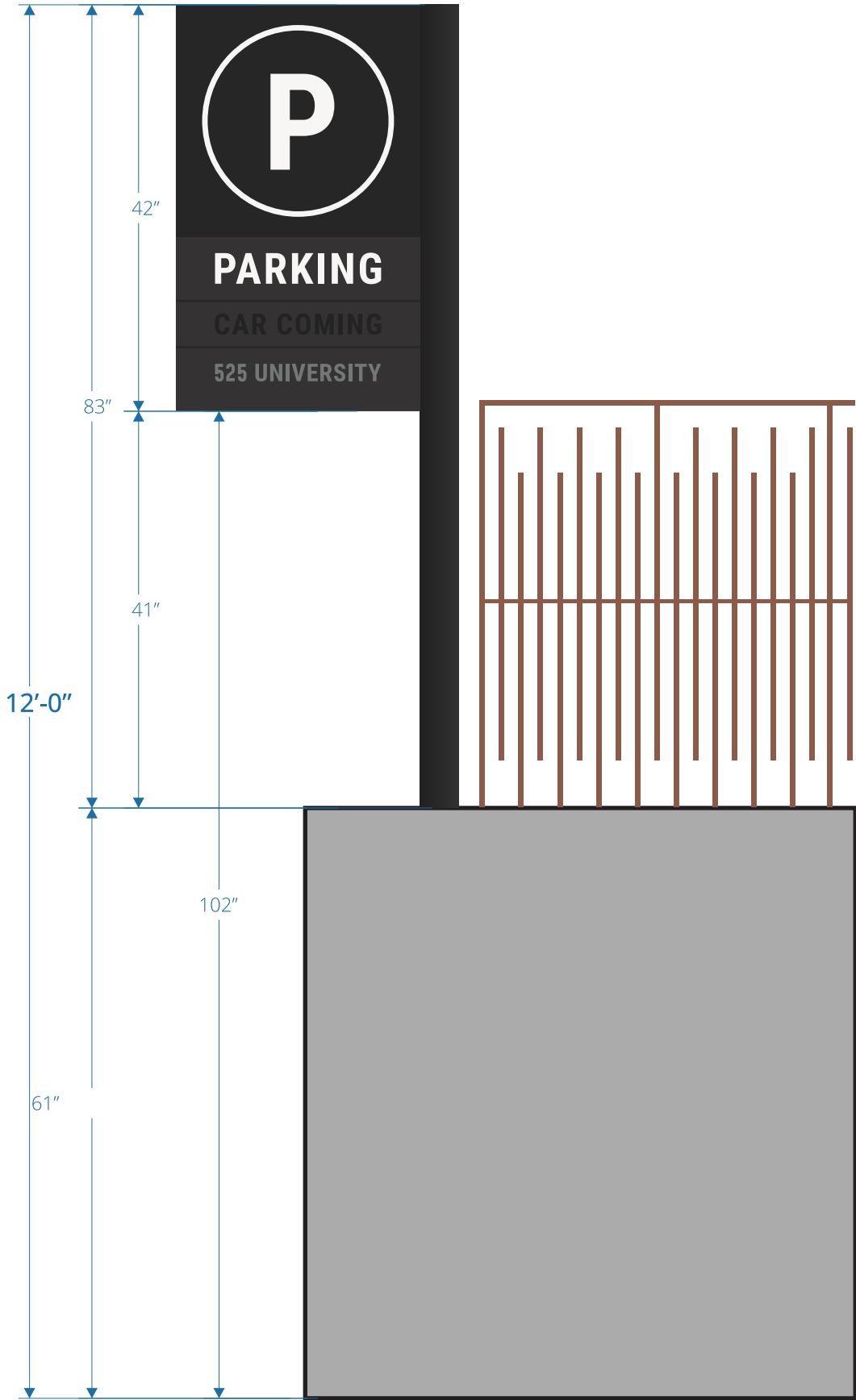
PAGE NUMBER

18



This sign is intended to be installed in accordance with the requirements of Article 600 of the National Electrical Code and/or other applicable local codes. This includes proper grounding and bonding of the sign.

DESCRIPTION	QTY: 1
A. 42"h x 25 1/4"w x 6"d fabricated aluminum cabinet with partially 24"h x 25 1/4"w perforated panel at the top part and internally illuminated, painted C1dark gray	
B. 4"w x 3"thick aluminum post, painted C2 dark gray	
C. 1/2" thick acrylic graphic and lettering push thru, painted C2 white	
D. LEDs	
E. 3 1/8"h x 1/2" thick push thru acrylic "Parking " lettering, painted C2 white	
F. cutout lettering with vehicle detection sensor program to lit, applied red LEDs and day night acrylic.	
G. 1 3/4"h x 1/4" thick FCO address lettering stainless steel	
H. 1/4" thick aluminum plate attached with steel thru bolt to existing base	
I. installed speaker inside the sign cabinet (see spec sheet for programming and installation detail)	
J. EXISTING base by Others	
K. 110v-277v ul listed power supply	
L. Disconnect switch box	
M. primary line 110-277v on dedicated circuit 20AMP by others	
N. J-box by others	
O. "Car Coming" controller box supplier by sign contractor installed and programmed by OTHERS	
P. 12v line brought to the sign by OTHERS. Connection made by sign contractor.	
Q. Photocell	
Notes: Programming and wiring of the "car coming" sensor and controller by OTHERS	



1 INSTALL ELEVATION
scale: 3/4" = 1'-0"



2 RENDERING
scale: NTS

CLIENT
525 UNIVERSITY

PROJECT
525
UNIVERSITY

525 UNIVERSITY AVE, SUITE 200
PALO ALTO, CA 94301

DRAWING / REVISION DATE
06/29/23 - YY 02/09/24 - YY
07/05/23 - YY 02/13/24 - YY
07/11/23 - YY 04/17/24 - YY
07/17/23 - YY 04/25/24 - YY
07/28/23 - YY
01/25/24 - YY
02/06/24 - YY

FILE NAME / LOCATION
Orchard Commercial\525
University Ave_LUX\Drawings\
1512 525 University Exterior.cdr

ORDER NUMBER
1512

SIGN TYPE
E

SHEET TITLE
BLADE PARKING ID

All drawings as well as creative content
are the property of Corporate Sign
Systems. You must have written consent
by a Corporate Sign Systems' Officer prior
to disclosure, reproduction, or distribution
outside of your organization.

PAGE NUMBER
20



PROPOSED SIGN



EXISTING SIGN TO BE REPLACED

CLIENT
525 UNIVERSITY

PROJECT
525
UNIVERSITY

525 UNIVERSITY AVE, SUITE 200
PALO ALTO, CA 94301

DRAWING / REVISION DATE
06/29/23 - YY 02/09/24 - YY
07/05/23 - YY 02/13/24 - YY
07/11/23 - YY 04/17/24 - YY
07/17/23 - YY 04/25/24 - YY
07/28/23 - YY
01/25/24 - YY
02/06/24 - YY

FILE NAME / LOCATION
Orchard Commercial\525
University Ave_LUX\Drawings\
1512 525 University Exterior.cdr

ORDER NUMBER
1512

SIGN TYPE
E

SHEET TITLE
BLADE PARKING ID

All drawings as well as creative content are the property of Corporate Sign Systems. You must have written consent by a Corporate Sign Systems' Officer prior to disclosure, reproduction, or distribution outside of your organization.

PAGE NUMBER
21

CLIENT
525 UNIVERSITY

PROJECT
525
UNIVERSITY

525 UNIVERSITY AVE, SUITE 200
PALO ALTO, CA 94301

DRAWING / REVISION DATE
06/29/23 - YY 02/09/24 - YY
07/05/23 - YY 02/13/24 - YY
07/11/23 - YY 04/17/24 - YY
07/17/23 - YY 04/25/24 - YY
07/28/23 - YY
01/25/24 - YY
02/06/24 - YY

FILE NAME / LOCATION
Orchard Commercial\525
University Ave_LUX\Drawings\
1512 525 University Exterior.cdr

ORDER NUMBER
1512

SIGN TYPE
[Redacted]

SHEET TITLE
SPEC SHEET DETAIL

All drawings as well as creative content are the property of Corporate Sign Systems. You must have written consent by a Corporate Sign Systems' Officer prior to disclosure, reproduction, or distribution outside of your organization.

PAGE NUMBER
22

(1) Pass Signs
Controller PSC-5
with 12VDC 6A
power supply

Vehicle detection
sensor

Customers Sign
If speaker is inside
sign use 18AWG/4C,
if not use 18AWG/2C



120VAC circuit
power in

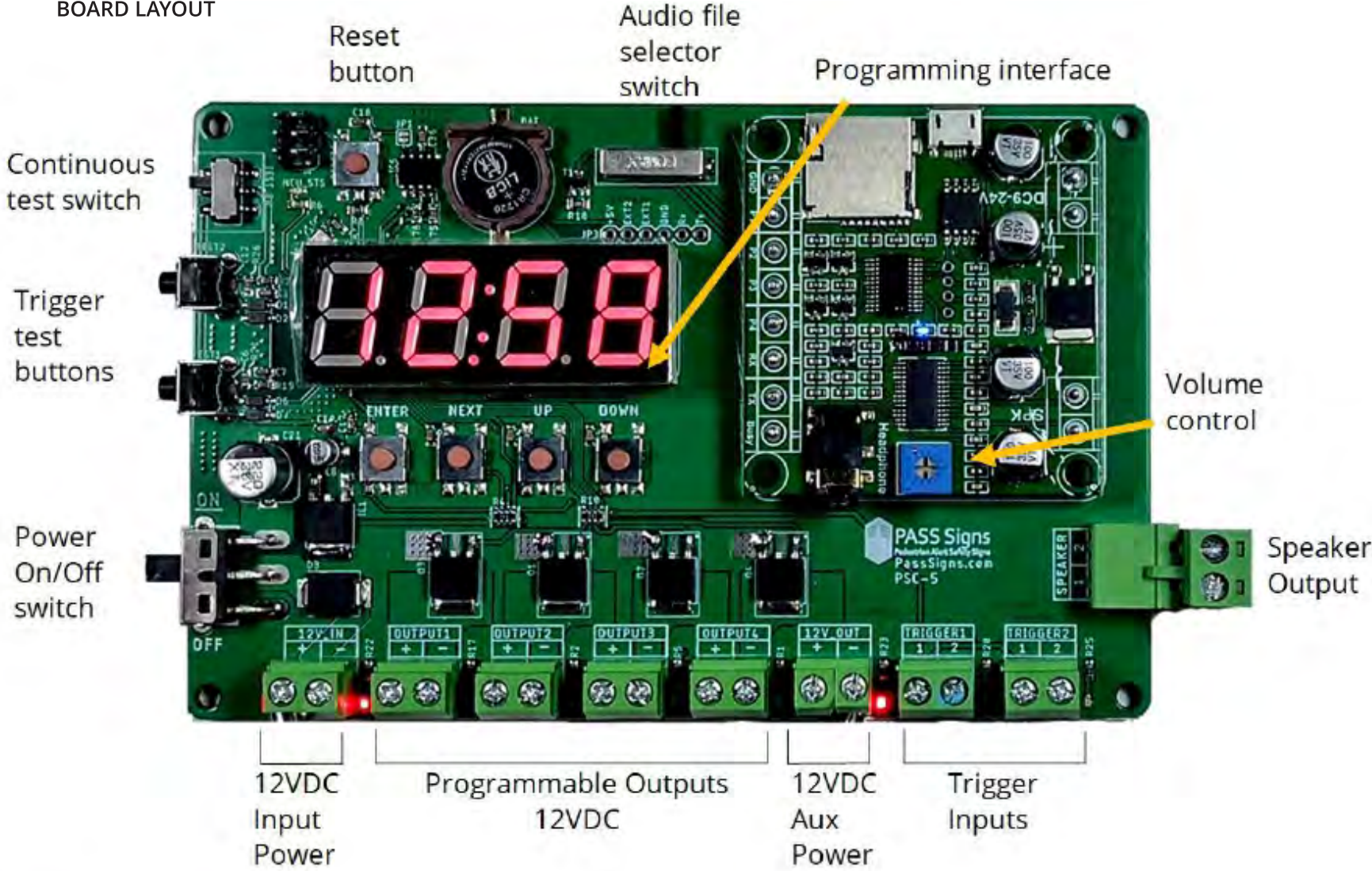
CAR SENSOR

CAR COMING
CONTROLLER BOX

12'-0"

18"

scale: 3/32" = 1'-0"



Quick Features

- (4) Timed outputs programmed for either flashing or constant output
- (2) Dry inputs programmed to trigger from Normally Open or Normally Closed
- (1) Timed speaker output with volume control and (4) channel selectable audio files
- Nighttime Audio cut-off timer (turn off audio output during designated times; example 8pm to 7am)
- Real-time clock onboard with programmable interface

CLIENT
525 UNIVERSITY

PROJECT
525
UNIVERSITY

525 UNIVERSITY AVE, SUITE 200
PALO ALTO, CA 94301

DRAWING / REVISION DATE

06/29/23 - YY 02/09/24 - YY
07/05/23 - YY 02/13/24 - YY
07/11/23 - YY 04/17/24 - YY
07/17/23 - YY 04/25/24 - YY
07/28/23 - YY
01/25/24 - YY
02/06/24 - YY

FILE NAME / LOCATION

Orchard Commercial\525
University Ave_LUX\Drawings\
1512 525 University Exterior.cdr

ORDER NUMBER

1512

SIGN TYPE

SHEET TITLE

SPEC SHEET DETAIL

All drawings as well as creative content are the property of Corporate Sign Systems. You must have written consent by a Corporate Sign Systems' Officer prior to disclosure, reproduction, or distribution outside of your organization.

PAGE NUMBER

23

VEHICLE MOTION DETECTOR - DIRECTIONAL LOGIC

PART NUMBER: PS-VMD-DL
USED TO DETECT MOTION IN AN AREA FROM 10'X10' TO 21'X28' IN FRONT OF THE MOTION



Applications:

- ◆ Activating Parking Alert Signs for vehicles
- ◆ Activating roll-up doors, barriers, and gates
- ◆ Activating Parking Alert Signs for pedestrians
- ◆ Activating alarms
- ◆ Activating light control systems
- ◆ Wrong-way vehicle traffic
- ◆ Wrong-way pedestrian traffic

Start up takes 30 seconds

Green LED - Detection of Vehicle

Red LED - Detection of Pedestrian

**Ceiling mounting: turn back bracket over, see page 3.

Wiring & Connections to PASS Signs Controller
(see page 3 for terminations)

	Sensor Wire	Function	Pass Signs Control Board Connection
Vehicle Detection	Red	V+ (12-36V)	12V+ Out
	Black	V- (12-36V)	12V- Out
	White	Relay 1 NO	Trigger1
	Yellow	Relay 1 COM	Trigger1
	Brown	Relay 1 NC	
Pedestrian Detection	Blue	Relay 2 NO	Trigger1
	Green	Relay 2 COM	Trigger1
	Grey	Relay 2 NC	

Direction Recognition from sensor:	Mode 1: Motion forward Mode 2: Motion backwards Mode 3: Motion in both directions
Mounting Height:	6ft ~ 28ft
Mounting Type:	Wall or Ceiling, 0° to 90°
Detection Area:	Min 10ft(w) x 10ft(d) at 6ft height Max 21ft(w) x 28ft(d) at 28ft height
Relay Info	Holding time - .2, .5, 1, 2, 5 secs 24VDC@1.0A 125VAC@0.5A

Function 1: Directional Logic Vehicle Motion Detection

Detects ONLY cars and ONLY in a single direction. This prevents false detection from pedestrians walking through the area and vehicles traveling in the opposite direction.

Vehicle Applications:

- Activating vehicle exit signs
- Activating ramp warning signs
- Activating traffic control systems
- Opening garage or roll-up doors

Function 2: Directional Logic Pedestrian Motion Detection

Detects ONLY pedestrians and ONLY in a single direction. This prevents false detection from pedestrians walking opposite direction or crossing the zone.

Pedestrian Applications:

- Activating pedestrian detection systems
- Activating storefront automatic doors
- Activating crosswalk systems

Application technology	Doppler radar
Transmission frequency	24.125GHz
Transmission power	<20dBm
Detection speed	2.0in/s – 15.5mph
Operation current	<100mA
Power frequency	50Hz
Temperature range	-22 °F ~ + 140 °F
Relative humidity	0% to 95%, no condensation
Protection grade	IP65
Relay output	24VDC@1.0A 125VAC@0.5A
External dimensions	6.46in x 4.37in x 3.72in
Cable length	23ft
Sensor weight	1.5lbs



408.292.1600
2464 De La Cruz Blvd., Santa Clara, CA 95050
www.corporatesigns.com
CONTRACTOR'S LIC# 765078
CLASS C45-ELECTRICAL SIGN CONTRACTOR

CLIENT
525 UNIVERSITY

PROJECT
525
UNIVERSITY

525 UNIVERSITY AVE, SUITE 200
PALO ALTO, CA 94301

DRAWING / REVISION DATE

06/29/23 - YY 02/09/24 - YY
07/05/23 - YY 02/13/24 - YY
07/11/23 - YY 04/17/24 - YY
07/17/23 - YY 04/25/24 - YY
07/28/23 - YY
01/25/24 - YY
02/06/24 - YY

FILE NAME / LOCATION

Orchard Commercial\525
University Ave_LUX\Drawings\
1512 525 University Exterior.cdr

ORDER NUMBER
1512

SIGN TYPE

SHEET TITLE
SPEC SHEET DETAIL

All drawings as well as creative content are the property of Corporate Sign Systems. You must have written consent by a Corporate Sign Systems' Officer prior to disclosure, reproduction, or distribution outside of your organization.

PAGE NUMBER
24

EXISTING SIGN TO BE REMOVED



CLIENT
525 UNIVERSITY

PROJECT
525
UNIVERSITY

525 UNIVERSITY AVE, SUITE 200
PALO ALTO, CA 94301

DRAWING / REVISION DATE

06/29/23 - YY 02/09/24 - YY
07/05/23 - YY 02/13/24 - YY
07/11/23 - YY 04/17/24 - YY
07/17/23 - YY 04/25/24 - YY
07/28/23 - YY
01/25/24 - YY
02/06/24 - YY

FILE NAME / LOCATION

Orchard Commercial\525
University Ave_LUX\Drawings\
1512 525 University Exterior.cdr

ORDER NUMBER

1512

SIGN TYPE

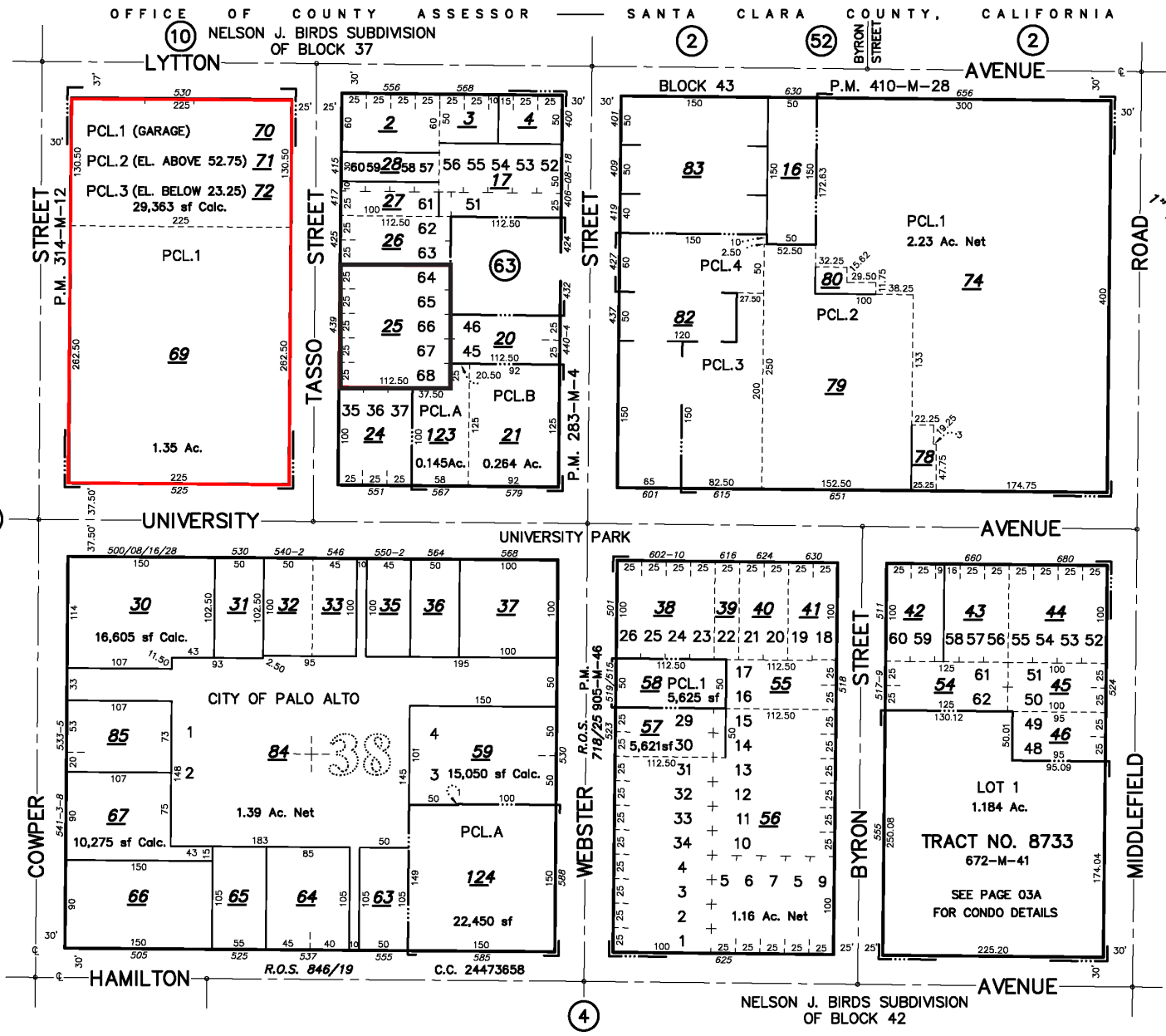
X1

SHEET TITLE
EXISTING SIGN

All drawings as well as creative content are the property of Corporate Sign Systems. You must have written consent by a Corporate Sign Systems' Officer prior to disclosure, reproduction, or distribution outside of your organization.

PAGE NUMBER

25



BOOK	PAGE
120	3

TRACT NO. 8733 HAMILTON CONDOS CD. 13212391				
555 BYRON STREET				
UNIT	FLR	APN	SITUS	
101	1	87	101	
102	1	88	102	
103	1	89	103	
104	1	90	104	
105	1	91	105	
106	1	92	106	
107	1	93	107	
109	1	94	109	
201	2	95	201	
202	2	96	202	
203	2	97	203	
204	2	98	204	
205	2	99	205	
206	2	100	206	
207	2	101	207	
208	2	102	208	
209	2	103	209	
210	2	104	210	
211	2	105	211	
301	3	106	301	
302	3	107	302	
303	3	108	303	
304	3	109	304	
305	3	110	305	
306	3	111	306	
307	3	112	307	
308	3	113	308	
309	3	114	309	
310	3	115	310	
311	3	116	311	
401	4	117	401	
402	4	118	402	
403	4	119	403	
409	4	120	409	
410	4	121	410	
411	4	122	411	

DET 80-A, 61

LAWRENCE E. STONE - ASSESSOR
Cadastral map for assessment purposes only.
Compiled under R. & T. Code, Sec. 327.
Effective Roll Year 2022-2023

408.292.1600
2464 De La Cruz Blvd., Santa Clara, CA 95050
www.corporatesigns.com
CONTRACTOR'S LIC# 765078
CLASS C45-ELECTRICAL SIGN CONTRACTOR

CLIENT
525 UNIVERSITY

PROJECT
525
UNIVERSITY

525 UNIVERSITY AVE, SUITE 200
PALO ALTO, CA 94301

DRAWING / REVISION DATE

06/29/23 - YY 02/09/24 - YY
07/05/23 - YY 02/13/24 - YY
07/11/23 - YY 04/17/24 - YY
07/17/23 - YY 04/25/24 - YY
07/28/23 - YY
01/25/24 - YY
02/06/24 - YY

FILE NAME / LOCATION

Orchard Commercial\525
University Ave_LUX\Drawings\
1512 525 University Exterior.cdr

ORDER NUMBER

1512

SIGN TYPE

SHEET TITLE
PARCEL MAP

All drawings as well as creative content are the property of Corporate Sign Systems. You must have written consent by a Corporate Sign Systems' Officer prior to disclosure, reproduction, or distribution outside of your organization.

PAGE NUMBER

26