



2022 CALIFORNIA CODE WILL APPLY TO THIS PROJECT

SIGN TYPE A - PRIMARY MONUMENT  
- Fabricate and install (x1) internally illuminated primary monument sign, concrete footing. Connecting to power source ( BY OTHERS) with dedicated 20amp circuit, photocell, and timer.

SIGN TYPE C - PROPERTY ID  
- Fabricate and install (x1) internally illuminated property id, wall mounting. Connecting to power source ( BY OTHERS) with dedicated 20amp circuit, photocell, and timer.

SIGN TYPE D - OVERHEAD PARKING ID  
- Fabricate and install (x1) fco lettering, and painted existing wall overhead parking id. Applied upward light, wall mounting. Connecting to power source ( BY OTHERS) with dedicated 20amp circuit, photocell, and timer.

SIGN TYPE E - BLADE PARKING ID  
- Fabricate and install (x1) internally illuminated blade parking it, wall mounting. Connecting to power source ( BY OTHERS) with dedicated 20amp circuit, photocell, and timer.

530

LYTTON

PROJECT:

530 LYTTON AVENUE  
PALO ALTO, CA 94301  
EXTERIOR PACKAGE  
02/13/2024

Design + Build.



408.292.1600  
2464 De La Cruz Blvd., Santa Clara, CA 95050  
[www.corporatesigns.com](http://www.corporatesigns.com)  
CONTRACTOR'S LIC# 765078  
CLASS C45-ELECTRICAL SIGN CONTRACTOR

TABLE OF CONTENTS:

- 1: COVER PAGE
- 2: TABLE OF CONTENTS
- 3: AREA CALCULATIONS
- 4: SIGN ELEMENTS
- 5: HIERARCHY
- 6: LOCATION PLAN
- 7: A - PRIMARY MONUMENT
- 8: A - PRIMARY MONUMENT PHOTO ELEVATION
- 9: A - EXISTING SIGN
- 10: C - PROPERTY ID
- 11: C - PROPERTY ID RENDERING
- 12: C - PROPERTY ID SIZE CHART
- 13: D - OVERHEAD PARKING
- 14: D - OVERHEAD PARKING RENDERING
- 15: D - OVERHEAD PARKING ISOMETRIC
- 16: E - BLADE PARKING ID
- 17: E - BLADE RENDERING
- 18: E - BLADE ELEVATION
- 19: SPEC SHEET DETAIL
- 20: WIRING & PROGRAMMING GUIDE
- 21: MOTION DETECTOR SPEC SHEET
- 22: EXISTING SIGN
- 23 PARCEL MAP



408.292.1600  
2464 De La Cruz Blvd., Santa Clara, CA 95050  
www.corporatesigns.com  
CONTRACTOR'S LIC# 765078  
CLASS C45-ELECTRICAL SIGN CONTRACTOR

CLIENT  
525 UNIVERSITY

PROJECT  
**530**  
LYTTON  
  
530 LYTTON AVE  
PALO ALTO, CA 94301

DRAWING / REVISION DATE  
06/29/23 - YY 02/06/24 - YY  
07/05/23 - YY 02/09/24 - YY  
07/11/23 - YY 02/13/24 - YY  
07/26/23 - YY  
07/28/23 - YY  
08/24/23 - YY  
01/25/24 - YY

FILE NAME / LOCATION  
Orchard Commercial\525  
University Ave\\_LUX\Drawings\  
1514 530 LYTTON Exterior.cdr

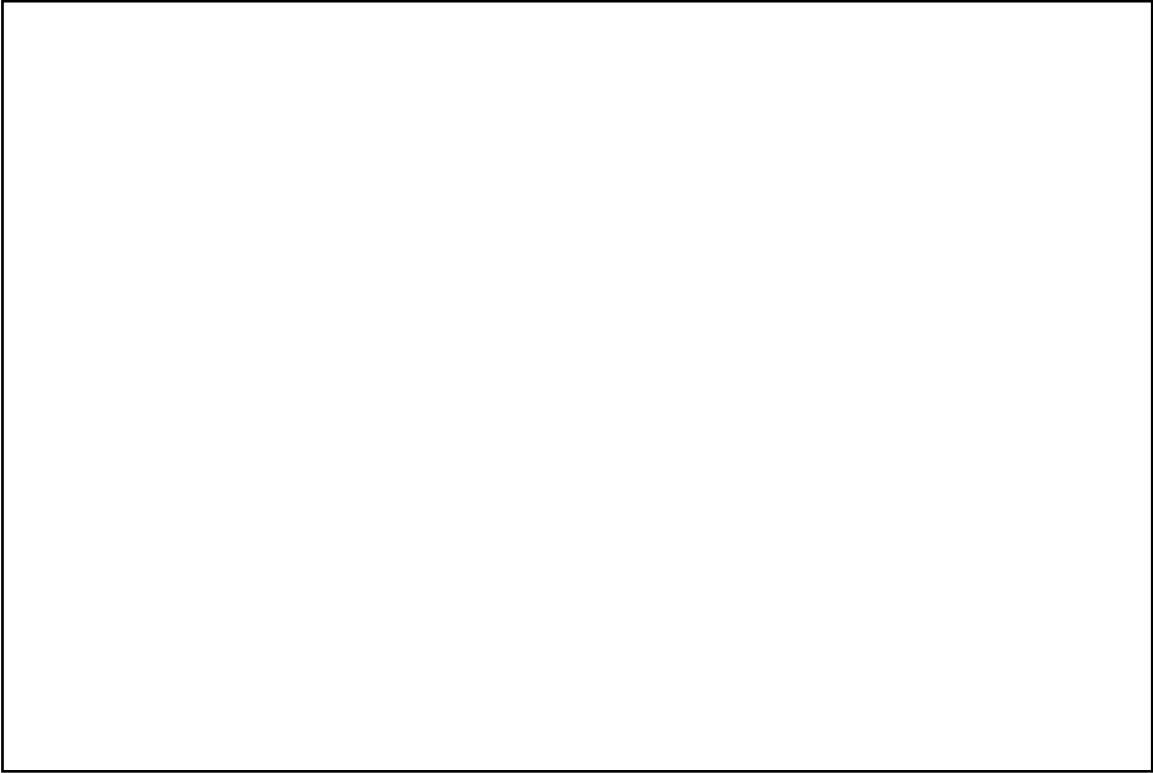
ORDER NUMBER  
**1514**

SIGN TYPE

SHEET TITLE  
TABLE OF CONTENTS

All drawings as well as creative content are the property of Corporate Sign Systems. You must have written consent by a Corporate Sign Systems’ Officer prior to disclosure, reproduction, or distribution outside of your organization.

PAGE NUMBER  
**2**





ALLOWABLE SIGNAGE - CALCULATIONS

TOTAL SIGN AREA CALCULATIONS

Total Sign Area Calculations in SF

530 LYTTON AVENUE

LOT FRONTAGE	MAXIMUM SIGN AREA	SIGN TYPE	PROPOSED SF	x QTY PROPOSED	x QTY ALLOWED	SIGN AREA ALLOWED	= TOTAL SIGN AREA USED
FT	SF	C. PROPERTY ID (WALL SIGN)	56.33 SF	1	ANY	150 SF (TOTAL AGGREGATE OF ALL WALL SIGNS)	56.33 SF
393 FT		D. OVERHEAD PARKING ID (WALL SIGN)	22.95 SF	1	ANY	150 SF (TOTAL AGGREGATE OF ALL WALL SIGNS)	22.95 SF
						SUBTOTAL =	79.28 SF

SIGN TYPE	PROPOSED SF	x QTY PROPOSED	x QTY ALLOWED	SIGN AREA ALLOWED	= TOTAL SIGN AREA USED
A. PRIMARY MONUMENT ID (DIRECTORY)	14.79 SF	1	2	REPLACING EXISTING LIKE-FOR-LIKE	14.79 SF
E. PARKING MONUMENT ID	7.36 SF	1	N/A	N/A	7.36 SF
					SUBTOTAL = 22.15 SF
					TOTAL = 101.43 SF



408.292.1600  
2464 De La Cruz Blvd., Santa Clara, CA 95050  
www.corporatesigns.com  
CONTRACTOR'S LIC# 765078  
CLASS C45-ELECTRICAL SIGN CONTRACTOR

CLIENT  
525 UNIVERSITY

PROJECT  
530  
LYTTON

530 LYTTON AVE  
PALO ALTO, CA 94301

DRAWING / REVISION DATE  
06/29/23 - YY 02/06/24 - YY  
07/05/23 - YY 02/09/24 - YY  
07/11/23 - YY 02/13/24 - YY  
07/26/23 - YY  
07/28/23 - YY  
08/24/23 - YY  
01/25/24 - YY

FILE NAME / LOCATION  
Orchard Commercial\525  
University Ave\\_LUX\Drawings\  
1514 530 LYTTON Exterior.cdr

ORDER NUMBER  
1514

SIGN TYPE

SHEET TITLE  
CALCULATIONS

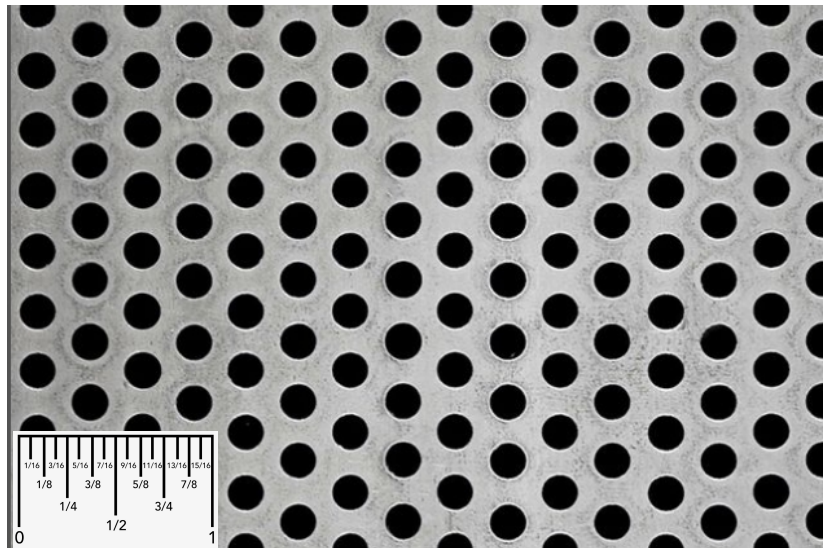
All drawings as well as creative content are the property of Corporate Sign Systems. You must have written consent by a Corporate Sign Systems’ Officer prior to disclosure, reproduction, or distribution outside of your organization.

PAGE NUMBER  
3

BRAND ARTWORK



ICON/SYMBOLS



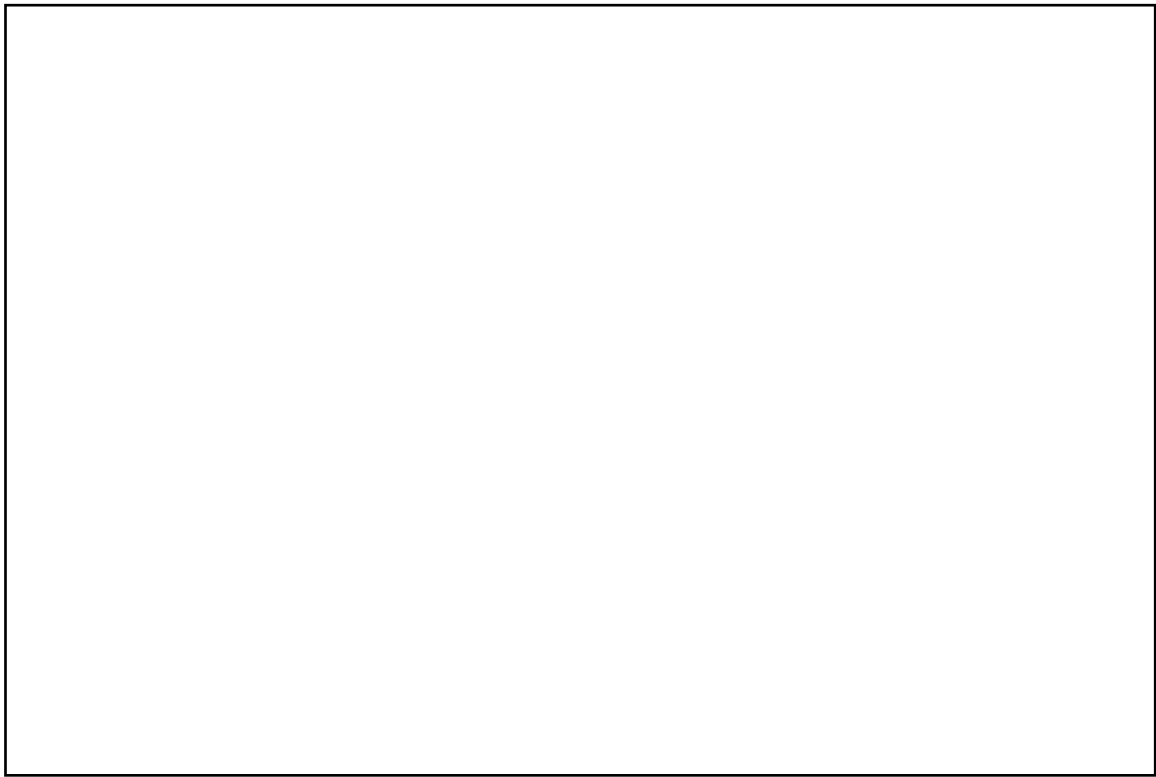
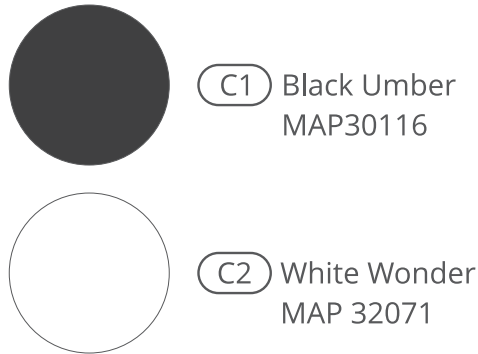
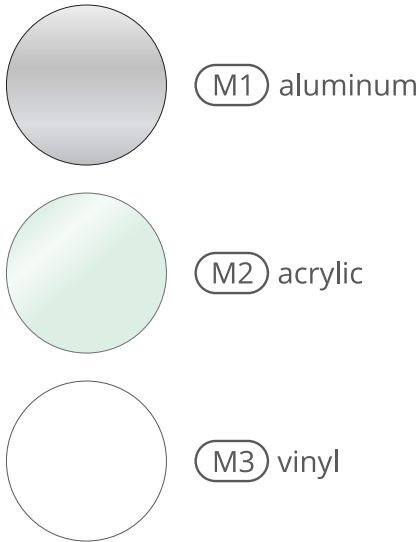
3/16" ROUND ON 5/16" STAGGER CENTERS  
1/8" BAR, 11.95 HPSI, 33% OPEN AREA  
ALUMINUM ALLOY 3003-H14

FONTS

**Roboto Condensed**      ABCDEFGHIJKLMNOPQRSTUVWXYZ  
abcdefghijklmnopqrstuvwxyz  
1234567890

**Roboto Condensed Bold**      ABCDEFGHIJKLMNOPQRSTUVWXYZ  
abcdefghijklmnopqrstuvwxyz  
1234567890

MATERIAL AND COLOR SCHEDULE



408.292.1600  
2464 De La Cruz Blvd., Santa Clara, CA 95050  
[www.corporatesigns.com](http://www.corporatesigns.com)  
CONTRACTOR'S LIC# 765078  
CLASS C45-ELECTRICAL SIGN CONTRACTOR

CLIENT  
525 UNIVERSITY

PROJECT  
**530**  
LYTTON

530 LYTTON AVE  
PALO ALTO, CA 94301

DRAWING / REVISION DATE

06/29/23 - YY 02/06/24 - YY  
07/05/23 - YY 02/09/24 - YY  
07/11/23 - YY 02/13/24 - YY  
07/26/23 - YY  
07/28/23 - YY  
08/24/23 - YY  
01/25/24 - YY

FILE NAME / LOCATION

Orchard Commercial\525  
University Ave\\_LUX\Drawings\  
1514 530 LYTTON Exterior.cdr

ORDER NUMBER

1514

SIGN TYPE



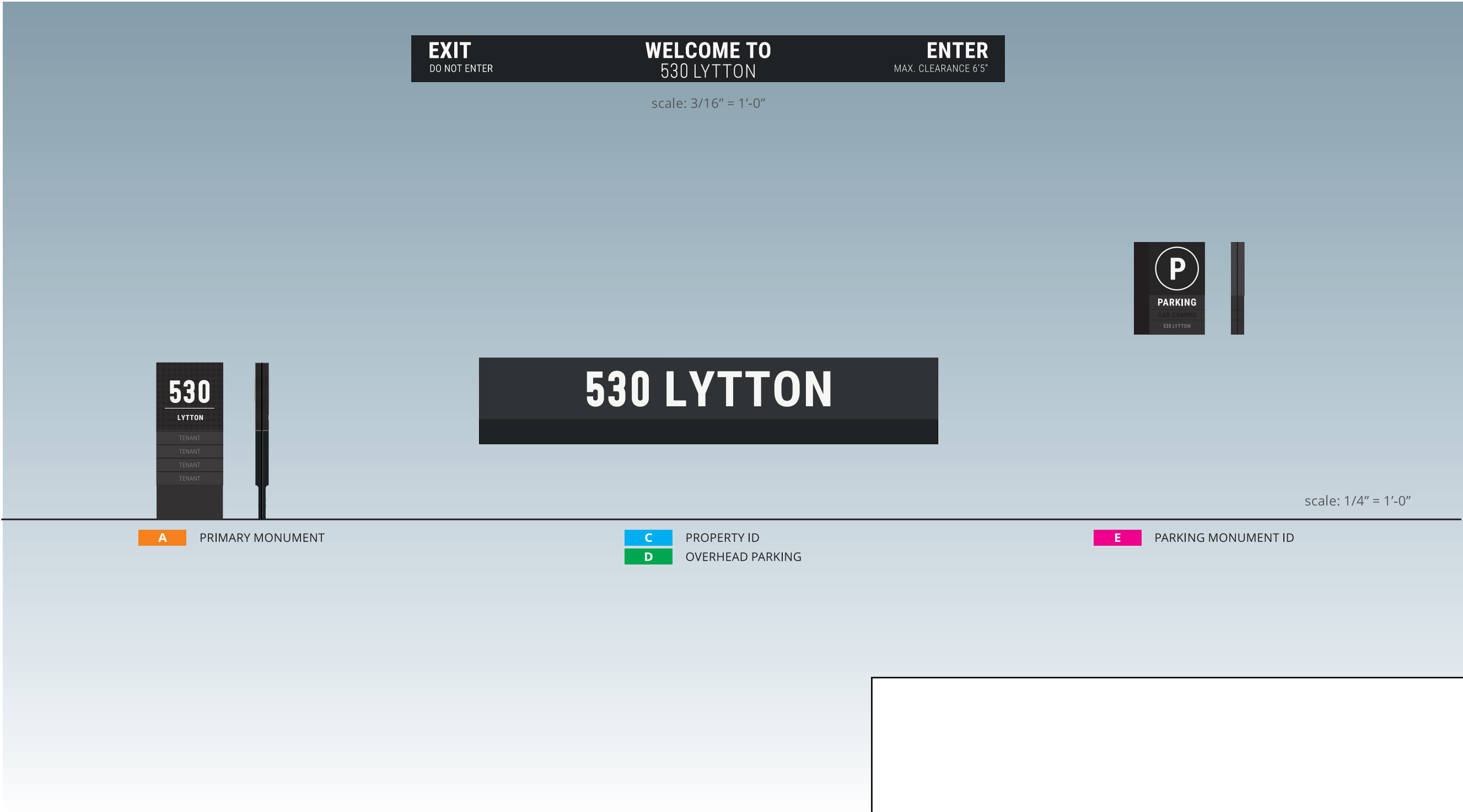
SHEET TITLE

SIGN ELEMENTS

All drawings as well as creative content are the property of Corporate Sign Systems. You must have written consent by a Corporate Sign Systems' Officer prior to disclosure, reproduction, or distribution outside of your organization.

PAGE NUMBER

4



408.292.1600  
2464 De La Cruz Blvd., Santa Clara, CA 95050  
www.corporatesigns.com  
CONTRACTOR'S LIC# 765078  
CLASS C45-ELECTRICAL SIGN CONTRACTOR

CLIENT  
525 UNIVERSITY

PROJECT  
**530**  
LYTTON

530 LYTTON AVE  
PALO ALTO, CA 94301

DRAWING / REVISION DATE

06/29/23 - YY 02/06/24 - YY  
07/05/23 - YY 02/09/24 - YY  
07/11/23 - YY 02/13/24 - YY  
07/26/23 - YY  
07/28/23 - YY  
08/24/23 - YY  
01/25/24 - YY

FILE NAME / LOCATION

Orchard Commercial\525  
University Ave\\_LUX\Drawings\  
1514 530 LYTTON Exterior.cdr

ORDER NUMBER

1514

SIGN TYPE

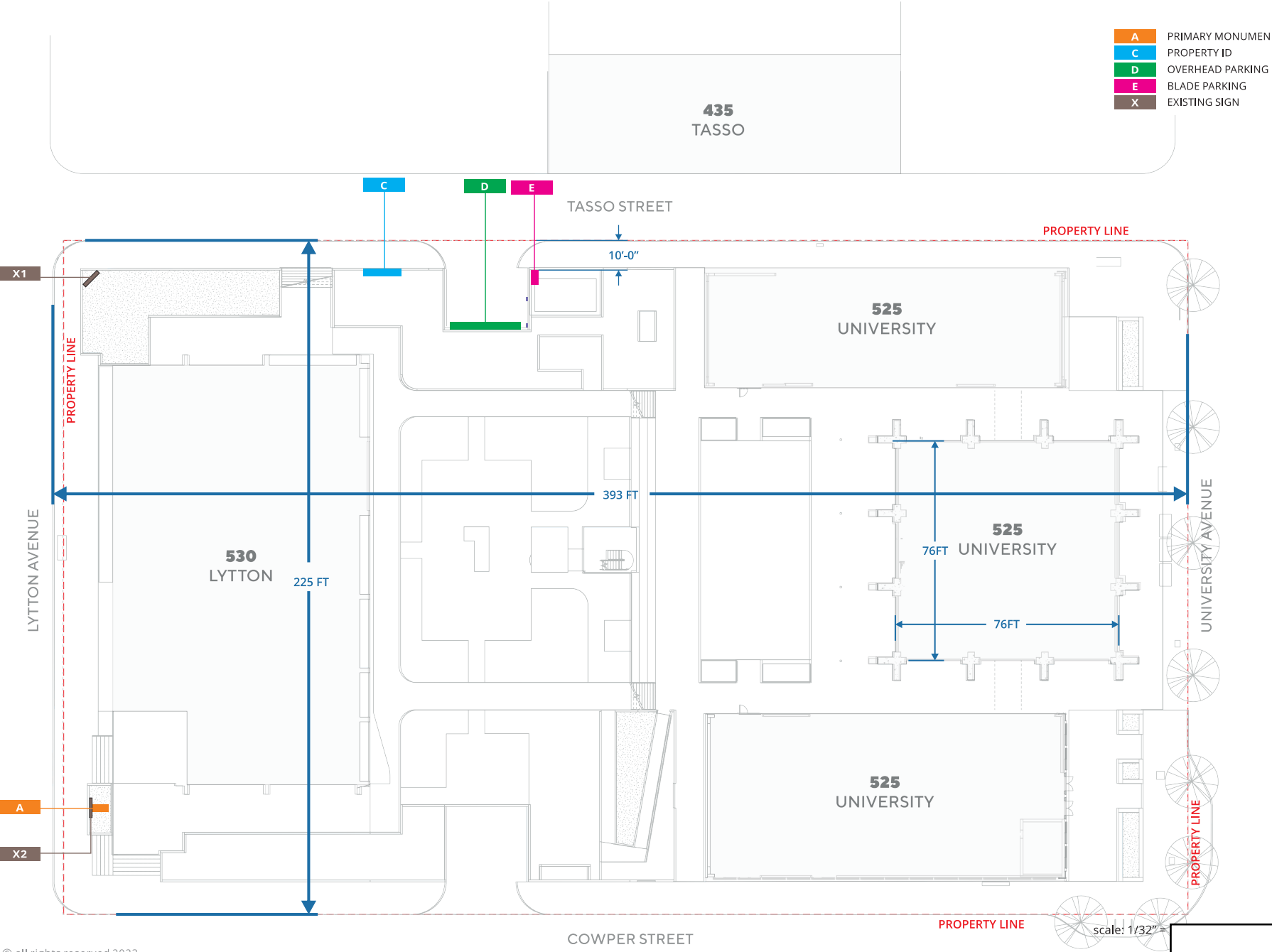
SHEET TITLE

SIGN HIERARCHY

All drawings as well as creative content are the property of Corporate Sign Systems. You must have written consent by a Corporate Sign Systems' Officer prior to disclosure, reproduction, or distribution outside of your organization.

PAGE NUMBER

5



© all rights reserved 2023

408.292.1600  
2464 De La Cruz Blvd., Santa Clara, CA 95050  
[www.corporatesigns.com](http://www.corporatesigns.com)  
CONTRACTOR'S LIC# 765078  
CLASS C45-ELECTRICAL SIGN CONTRACTOR

CLIENT  
525 UNIVERSITY

PROJECT  
**530**  
LYTTON

530 LYTTON AVE  
PALO ALTO, CA 94301

DRAWING / REVISION DATE  
06/29/23 - YY 02/06/24 - YY  
07/05/23 - YY 02/09/24 - YY  
07/11/23 - YY 02/13/24 - YY  
07/26/23 - YY  
07/28/23 - YY  
08/24/23 - YY  
01/25/24 - YY

FILE NAME / LOCATION  
Orchard Commercial\525  
University Ave\\_LUX\Drawings\  
1514 530 LYTTON Exterior.cdr

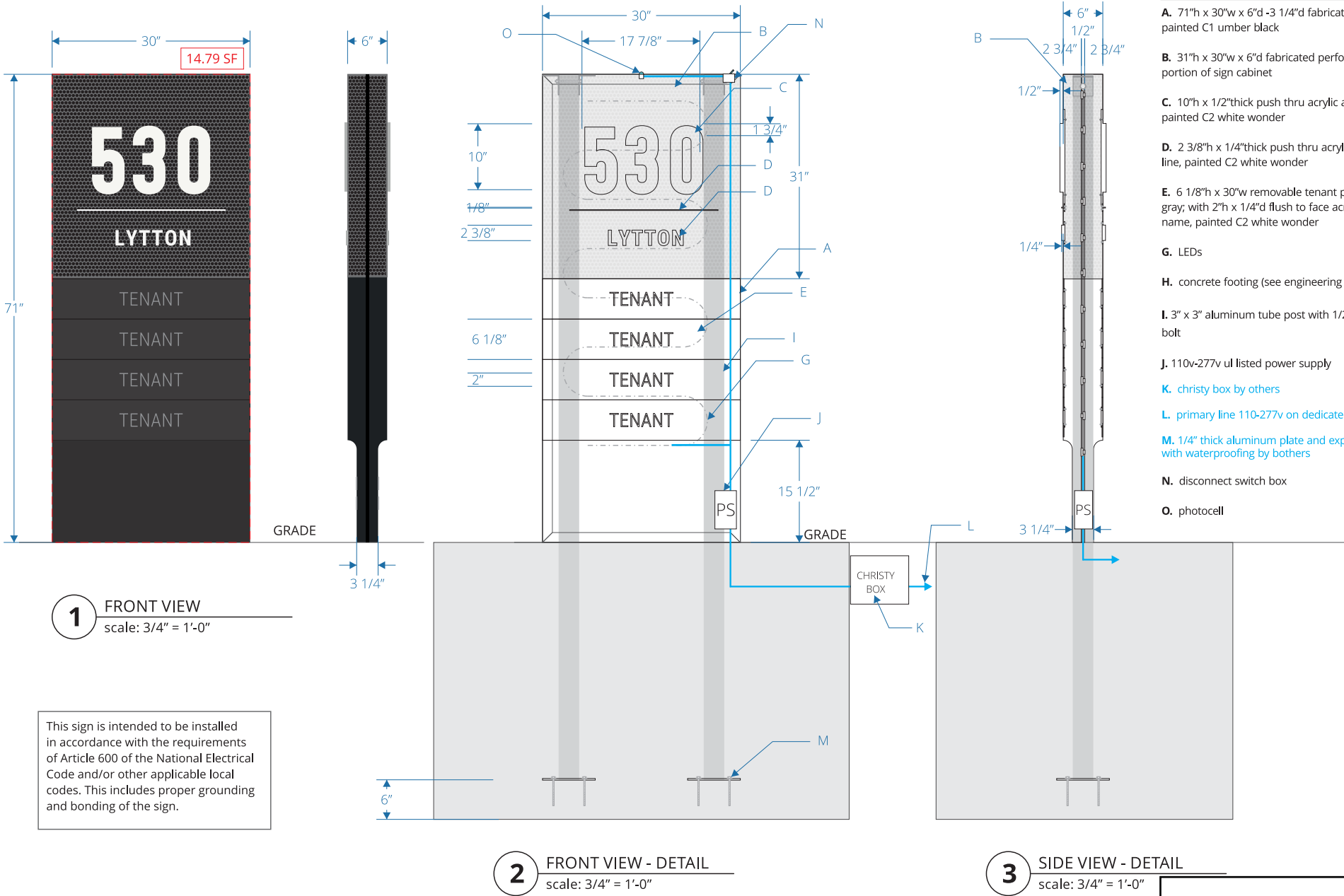
ORDER NUMBER  
**1514**

SIGN TYPE

SHEET TITLE  
LOCATION PLAN

All drawings as well as creative content are the property of Corporate Sign Systems. You must have written consent by a Corporate Sign Systems' Officer prior to disclosure, reproduction, or distribution outside of your organization.

PAGE NUMBER  
**6**



- DOUBLE SIDED SIGN** QTY: 1
- DESCRIPTION**
- A.** 71”h x 30”w x 6”d -3 1/4”d fabricated aluminum cabinet, painted C1 umber black
  - B.** 31”h x 30”w x 6”d fabricated perforated panel on the top portion of sign cabinet
  - C.** 10”h x 1/2”thick push thru acrylic address number id, painted C2 white wonder
  - D.** 2 3/8”h x 1/4”thick push thru acrylic lettering and 1/8” rule line, painted C2 white wonder
  - E.** 6 1/8”h x 30”w removable tenant panel, painted C1 dark gray; with 2”h x 1/4”d flush to face acrylic push thru tenant name, painted C2 white wonder
  - G.** LEDs
  - H.** concrete footing (see engineering page for detail)
  - I.** 3” x 3” aluminum tube post with 1/2”dia galvanized steel thru bolt
  - J.** 110v-277v ul listed power supply
  - K.** christy box by others
  - L.** primary line 110-277v on dedicated circuit 20AMP by others
  - M.** 1/4” thick aluminum plate and expansion bolt mounted with waterproofing by bothers
  - N.** disconnect switch box
  - O.** photocell

**CLIENT**  
525 UNIVERSITY

**PROJECT**

**530**  
LYTTON

530 LYTTON AVE  
PALO ALTO, CA 94301

**DRAWING / REVISION DATE**

06/29/23 - YY 02/06/24 - YY  
07/05/23 - YY 02/09/24 - YY  
07/11/23 - YY 02/13/24 - YY  
07/26/23 - YY  
07/28/23 - YY  
08/24/23 - YY  
01/25/24 - YY

**FILE NAME / LOCATION**

Orchard Commercial\525  
University Ave\\_LUX\Drawings\  
1514 530 LYTTON Exterior.cdr

**ORDER NUMBER**

1514

**SIGN TYPE**

A

**SHEET TITLE**

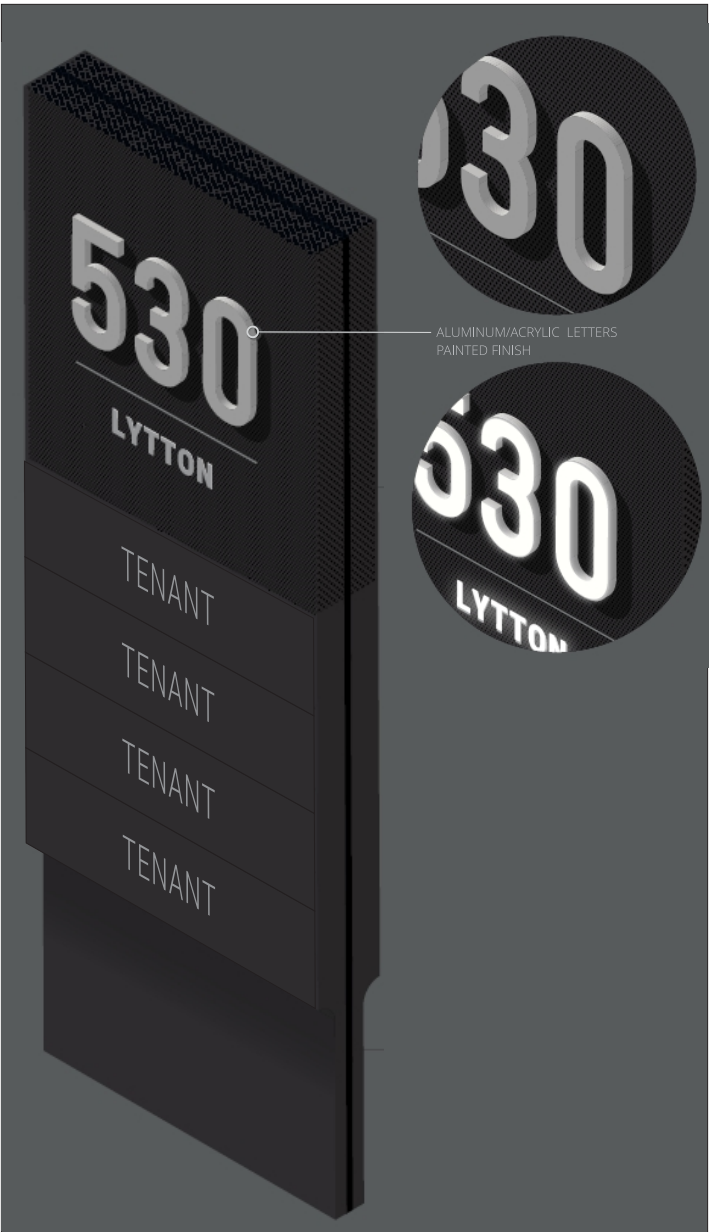
PRIMARY MONUMENT

All drawings as well as creative content are the property of Corporate Sign Systems. You must have written consent by a Corporate Sign Systems’ Officer prior to disclosure, reproduction, or distribution outside of your organization.

**PAGE NUMBER**

7





CLIENT  
525 UNIVERSITY

PROJECT  
**530**  
LYTTON

530 LYTTON AVE  
PALO ALTO, CA 94301

DRAWING / REVISION DATE  
06/29/23 - YY 02/06/24 - YY  
07/05/23 - YY 02/09/24 - YY  
07/11/23 - YY 02/13/24 - YY  
07/26/23 - YY  
07/28/23 - YY  
08/24/23 - YY  
01/25/24 - YY

FILE NAME / LOCATION  
Orchard Commercial\525  
University Ave\\_LUX\Drawings\  
1514 530 LYTTON Exterior.cdr

ORDER NUMBER  
**1514**

SIGN TYPE  
**A**

SHEET TITLE  
PRIMARY MONUMENT  
(PHOTO ELEVATION)

All drawings as well as creative content are the property of Corporate Sign Systems. You must have written consent by a Corporate Sign Systems' Officer prior to disclosure, reproduction, or distribution outside of your organization.

PAGE NUMBER  
**8**

EXISTING SIGN TO BE REPLACED (18.6 SF)



X2

CLIENT  
525 UNIVERSITY

PROJECT  
**530**  
LYTTON  
  
530 LYTTON AVE  
PALO ALTO, CA 94301

DRAWING / REVISION DATE  
06/29/23 - YY 02/06/24 - YY  
07/05/23 - YY 02/09/24 - YY  
07/11/23 - YY 02/13/24 - YY  
07/26/23 - YY  
07/28/23 - YY  
08/24/23 - YY  
01/25/24 - YY

FILE NAME / LOCATION  
Orchard Commercial\525  
University Ave\\_LUX\Drawings\  
1514 530 LYTTON Exterior.cdr

ORDER NUMBER  
**1514**

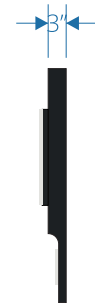
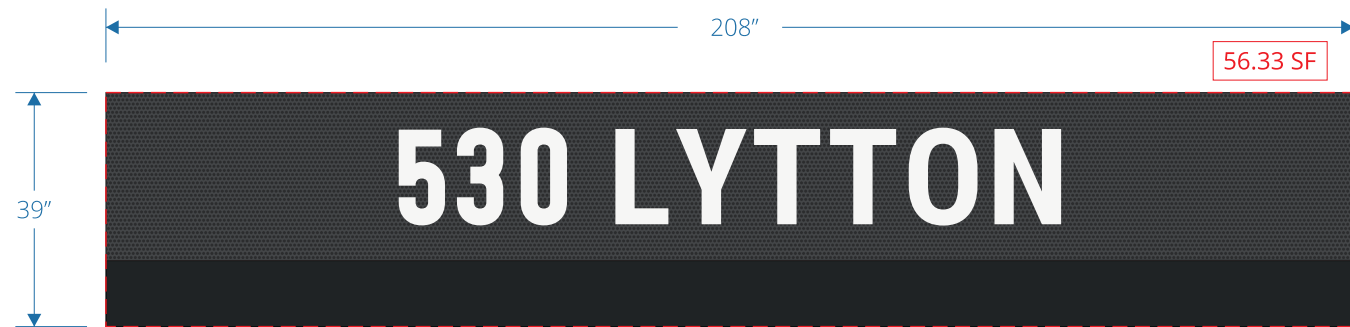
SIGN TYPE  
**A**

SHEET TITLE  
PRIMARY MONUMENT  
(PHOTO ELEVATION)

All drawings as well as creative content are the property of Corporate Sign Systems. You must have written consent by a Corporate Sign Systems' Officer prior to disclosure, reproduction, or distribution outside of your organization.

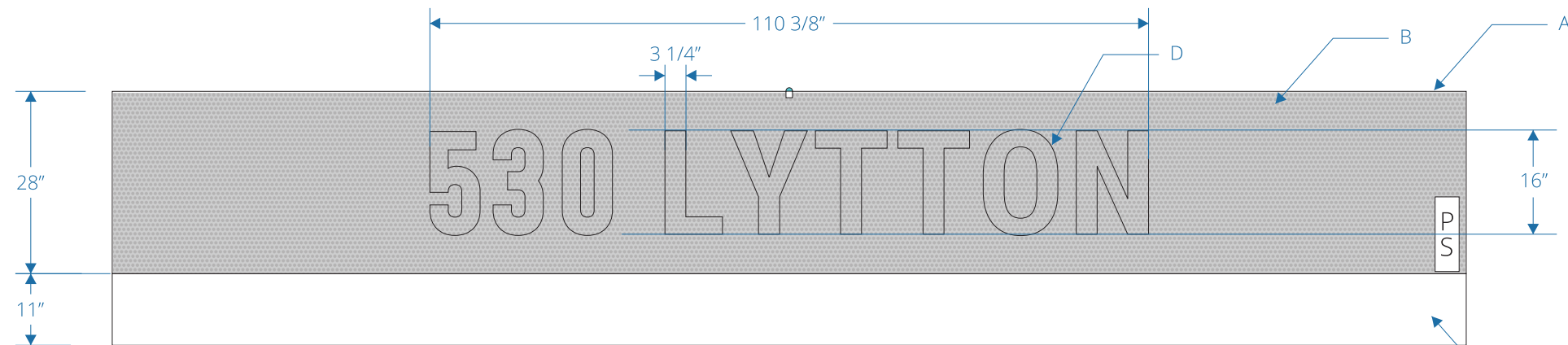
PAGE NUMBER  
**9**





1 FRONT VIEW  
scale: 3/8" = 1'-0"

2 SIDE VIEW  
scale: 3/8" = 1'-0"



3 FRONT VIEW - DETAIL  
scale: 1/2" = 1'-0"

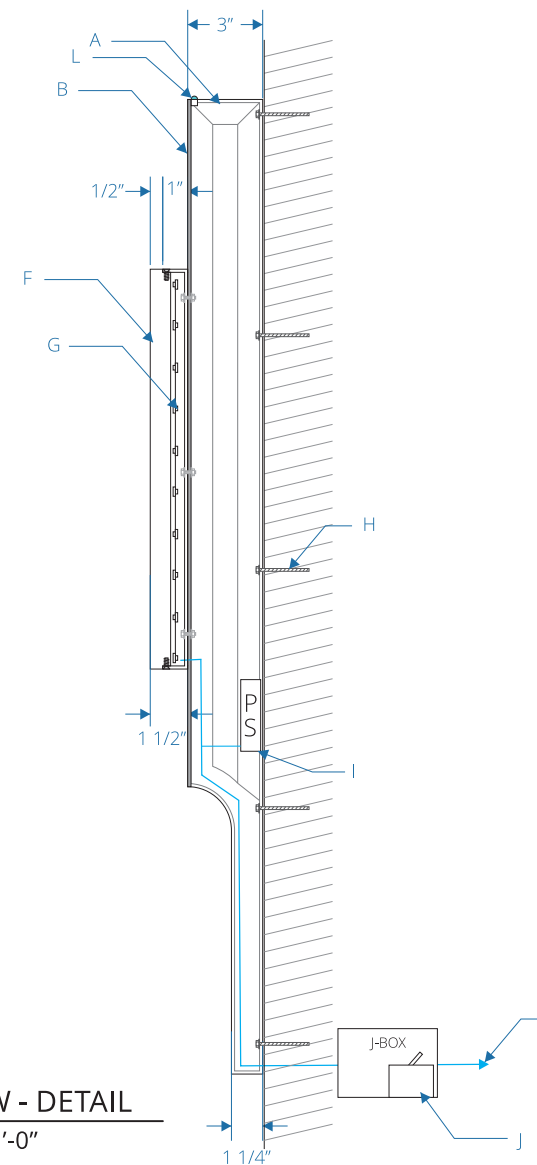
DESCRIPTION

QTY: 1

- A. 39"h x 208"w x 3" - 1 1/2"d fabricated aluminum cabinet with face perforated on the top portion, painted C1 umber black
- B. 28"h x 1/8" thick perforated aluminum face
- C. bottom curved portion of fabricated aluminum sign cabinet at 1 1/2"d, painted C1 umber black
- D. 16"h x 1 1/2"d fabricated aluminum lettering with 1/2" thick acrylic face lit mount to sign face cabinet
- F. 1/2" thick acrylic face, painted C2 white wonder
- G. LEDs
- H. attached to existing wall with tapcon concrete anchor
- I. 110v-277v ul listed power supply
- J. j-box and disconnect switch box by others
- K. primary line 110-277v on dedicated circuit 20AMP by others
- L. photocell

This sign is intended to be installed in accordance with the requirements of Article 600 of the National Electrical Code and/or other applicable local codes. This includes proper grounding and bonding of the sign.

4 SIDE VIEW - DETAIL  
scale: 2" = 1'-0"



CLIENT  
525 UNIVERSITY

PROJECT  
**530**  
LYTTON

530 LYTTON AVE  
PALO ALTO, CA 94301

DRAWING / REVISION DATE

06/29/23 - YY 02/06/24 - YY  
07/05/23 - YY 02/09/24 - YY  
07/11/23 - YY 02/13/24 - YY  
07/26/23 - YY  
07/28/23 - YY  
08/24/23 - YY  
01/25/24 - YY

FILE NAME / LOCATION

Orchard Commercial\525  
University Ave\\_LUX\Drawings\  
1514 530 LYTTON Exterior.cdr

ORDER NUMBER

1514

SIGN TYPE

C

SHEET TITLE

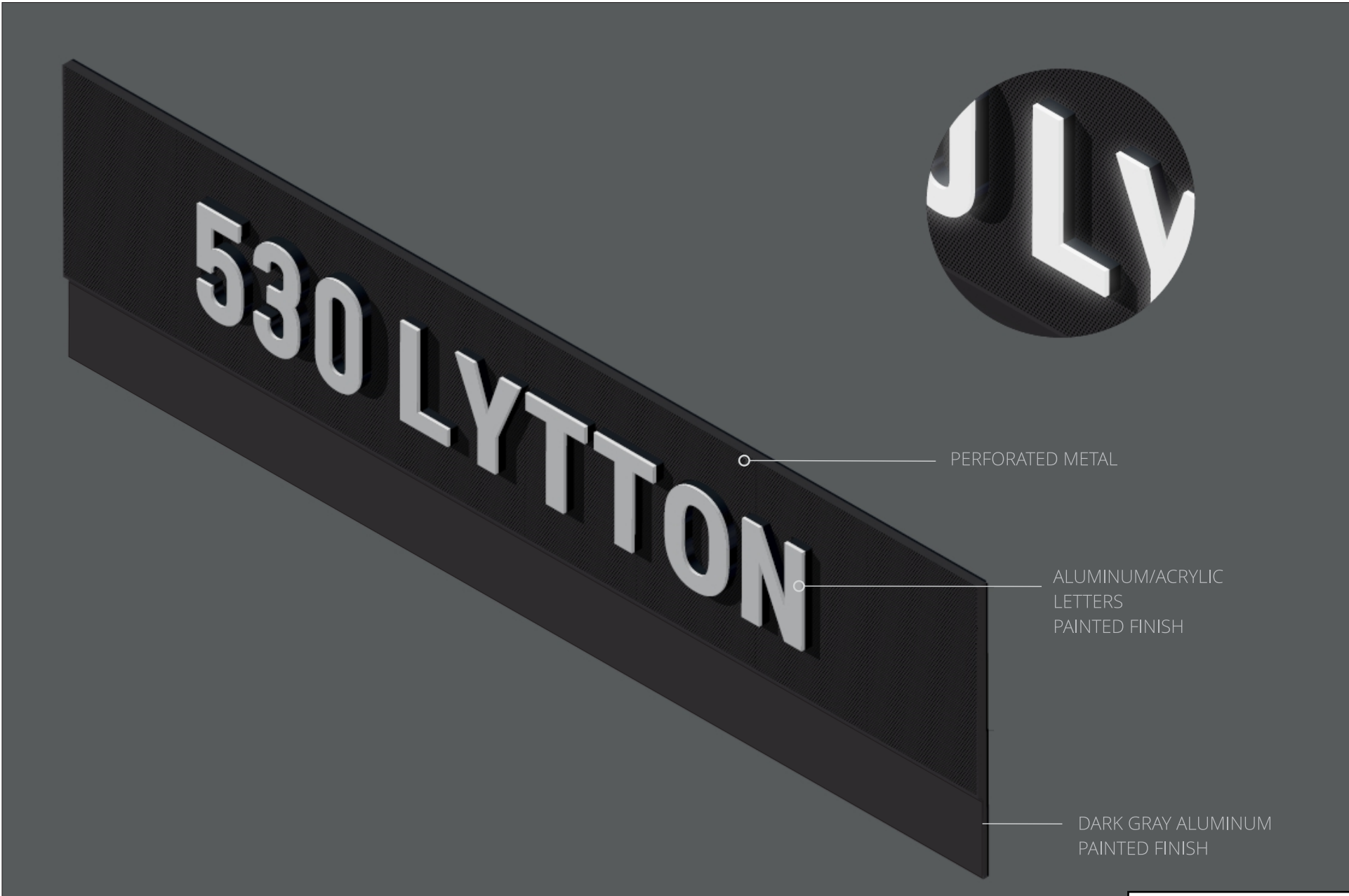
PROPERTY ID

All drawings as well as creative content are the property of Corporate Sign Systems. You must have written consent by a Corporate Sign Systems' Officer prior to disclosure, reproduction, or distribution outside of your organization.

PAGE NUMBER

10





5 RENDERING  
scale: NTS

CLIENT  
525 UNIVERSITY

PROJECT  
**530**  
LYTTON

530 LYTTON AVE  
PALO ALTO, CA 94301

DRAWING / REVISION DATE

06/29/23 - YY 02/06/24 - YY  
07/05/23 - YY 02/09/24 - YY  
07/11/23 - YY 02/13/24 - YY  
07/26/23 - YY  
07/28/23 - YY  
08/24/23 - YY  
01/25/24 - YY

FILE NAME / LOCATION

Orchard Commercial\525  
University Ave\\_LUX\Drawings\  
1514 530 LYTTON Exterior.cdr

ORDER NUMBER

1514

SIGN TYPE

C

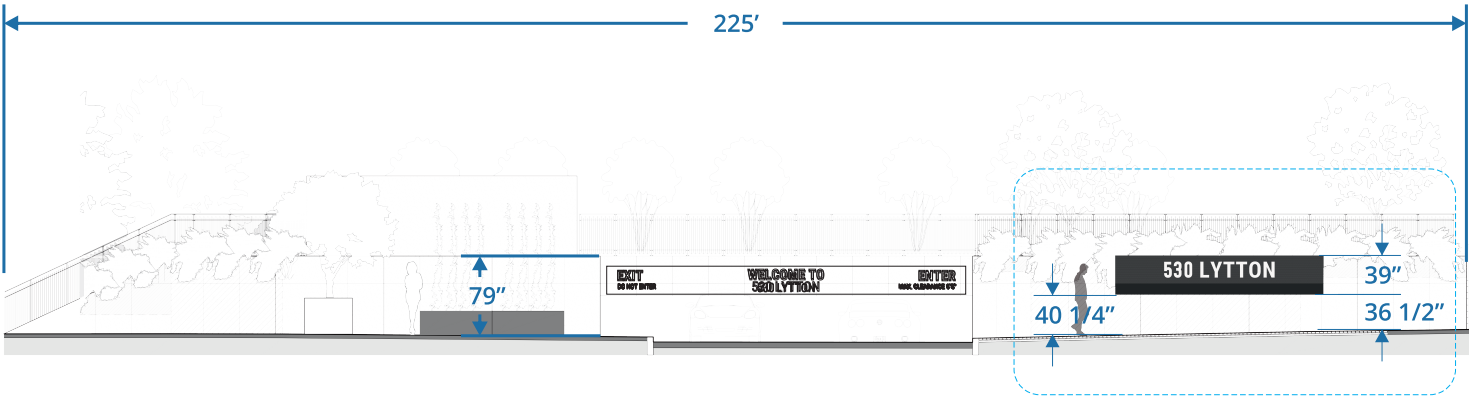
SHEET TITLE

PROPERTY ID

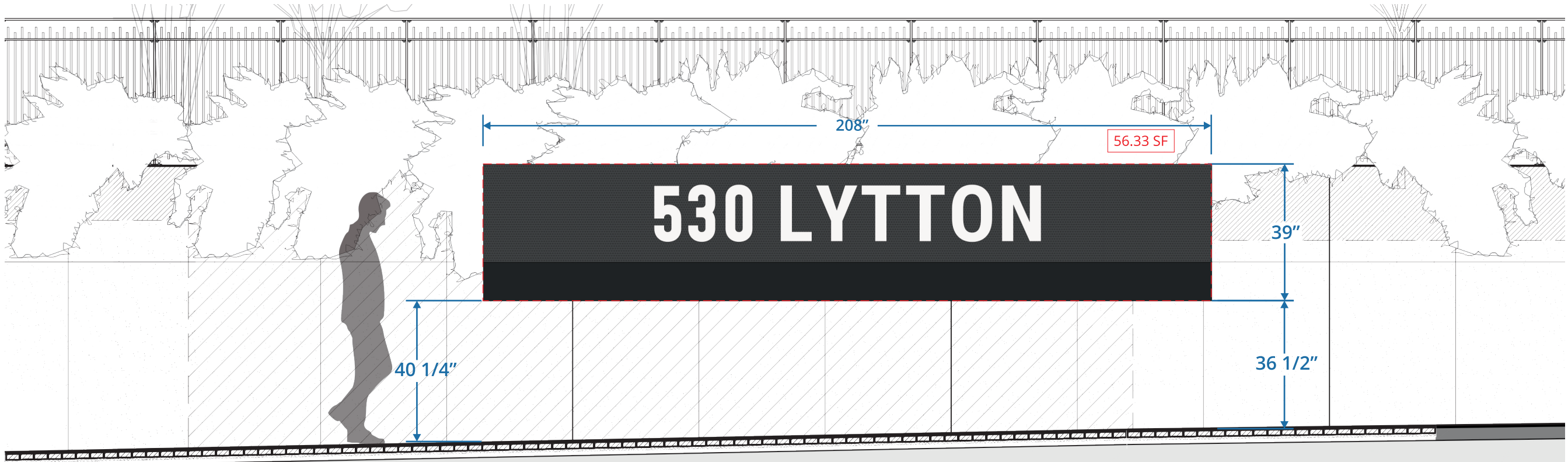
All drawings as well as creative content are the property of Corporate Sign Systems. You must have written consent by a Corporate Sign Systems' Officer prior to disclosure, reproduction, or distribution outside of your organization.

PAGE NUMBER

11

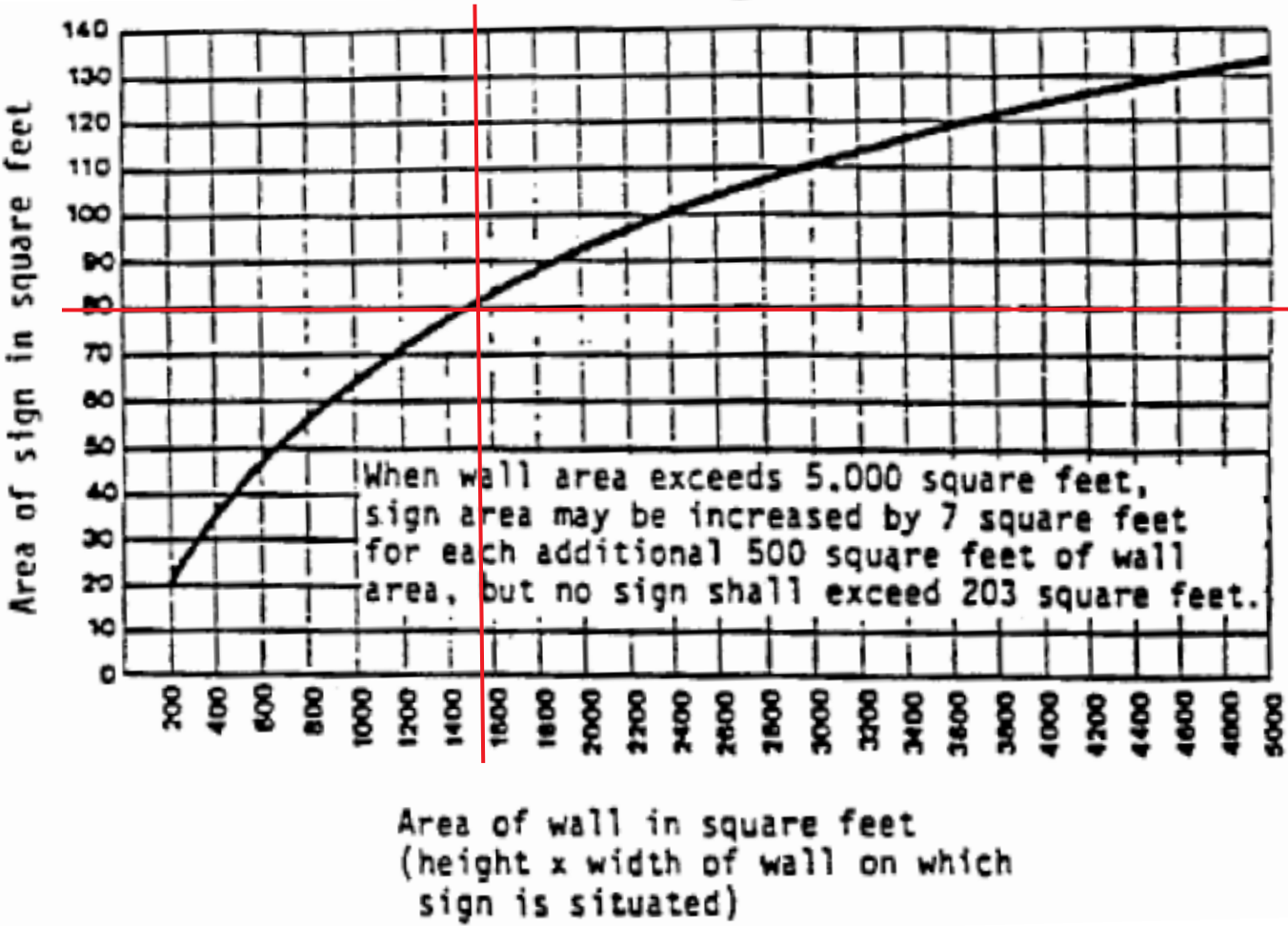


6 ELEVATION  
scale: 1/16" = 1'-0"



7 ELEVATION - ENLARGED  
scale: 3/16" = 1'-0"

WALL SIGNS: COMBINED SIGN TYPE C AND SIGN TYPE D



8 CHART  
scale: NTS

CLIENT  
525 UNIVERSITY

PROJECT  
**530**  
LYTTON

530 LYTTON AVE  
PALO ALTO, CA 94301

DRAWING / REVISION DATE

06/29/23 - YY 02/06/24 - YY  
07/05/23 - YY 02/09/24 - YY  
07/11/23 - YY 02/13/24 - YY  
07/26/23 - YY  
07/28/23 - YY  
08/24/23 - YY  
01/25/24 - YY

FILE NAME / LOCATION

Orchard Commercial\525  
University Ave\\_LUX\Drawings\  
1514 530 LYTTON Exterior.cdr

ORDER NUMBER

1514

SIGN TYPE

C

SHEET TITLE

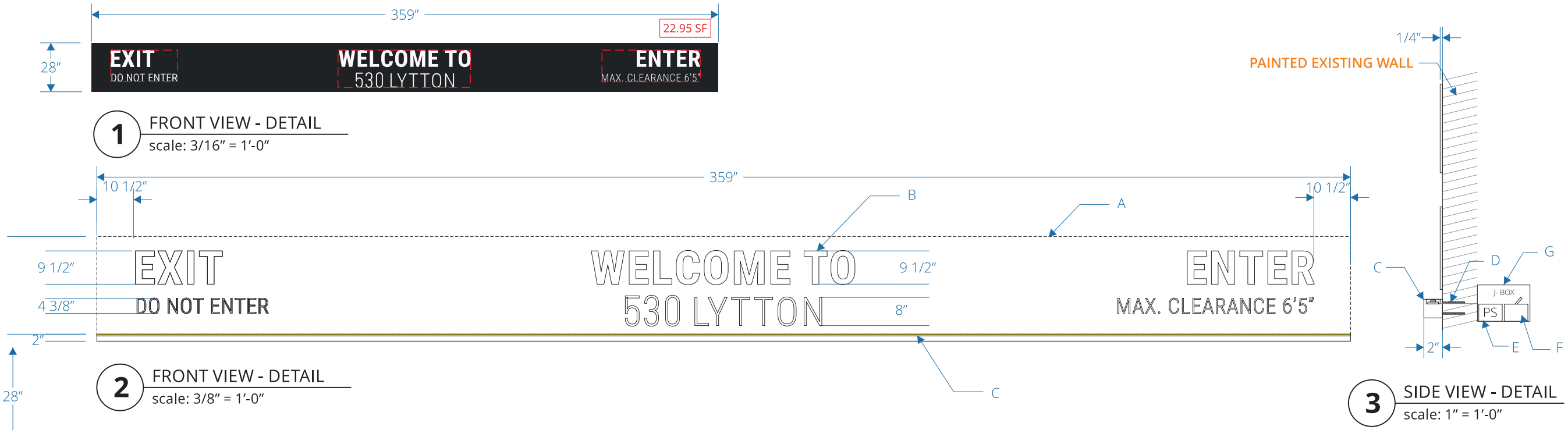
PROPERTY ID

All drawings as well as creative content  
are the property of Corporate Sign  
Systems. You must have written consent  
by a Corporate Sign Systems' Officer prior  
to disclosure, reproduction, or distribution  
outside of your organization.

PAGE NUMBER

12





**CLIENT**  
525 UNIVERSITY

**PROJECT**  
**530**  
LYTTON

530 LYTTON AVE  
PALO ALTO, CA 94301

**DRAWING / REVISION DATE**  
06/29/23 - YY 02/06/24 - YY  
07/05/23 - YY 02/09/24 - YY  
07/11/23 - YY 02/13/24 - YY  
07/26/23 - YY  
07/28/23 - YY  
08/24/23 - YY  
01/25/24 - YY

**FILE NAME / LOCATION**  
Orchard Commercial\525  
University Ave\LUX\Drawings\  
1514 530 LYTTON Exterior.cdr

**ORDER NUMBER**  
**1514**

**SIGN TYPE**  
**D**

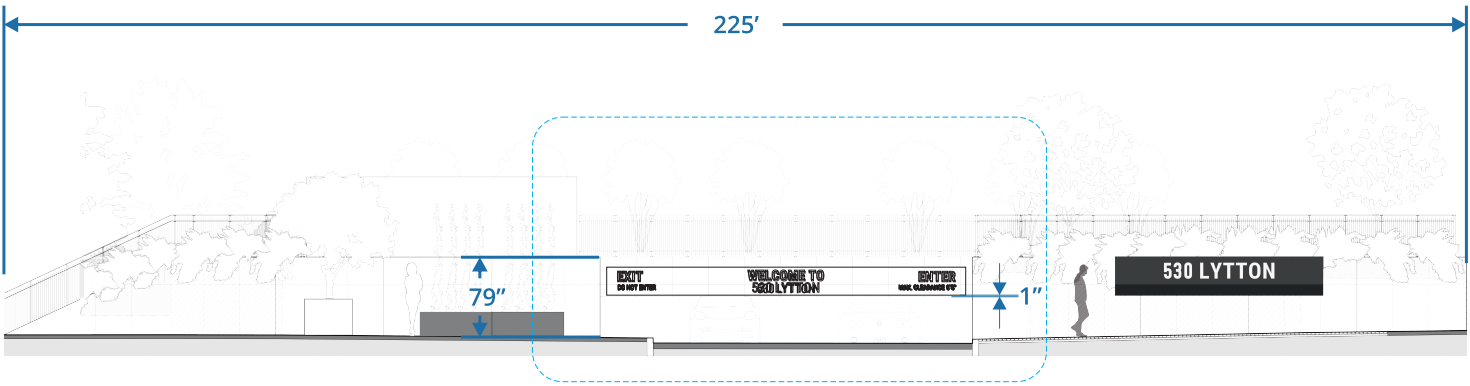
**SHEET TITLE**  
OVERHEAD PARKING ID

All drawings as well as creative content are the property of Corporate Sign Systems. You must have written consent by a Corporate Sign Systems' Officer prior to disclosure, reproduction, or distribution outside of your organization.

**PAGE NUMBER**  
**13**



**4 ELEVATION**  
scale: 1/4" = 1'-0"



**5** ELEVATION  
scale: 1/16" = 1'-0"



**6** ELEVATION - ENLARGED  
scale: 1/4" = 1'-0"

CLIENT  
525 UNIVERSITY

PROJECT  
**530**  
LYTTON  
530 LYTTON AVE  
PALO ALTO, CA 94301

DRAWING / REVISION DATE  
06/29/23 - YY 02/06/24 - YY  
07/05/23 - YY 02/09/24 - YY  
07/11/23 - YY 02/13/24 - YY  
07/26/23 - YY  
07/28/23 - YY  
08/24/23 - YY  
01/25/24 - YY

FILE NAME / LOCATION  
Orchard Commercial\525  
University Ave\\_LUX\Drawings\  
1514 530 LYTTON Exterior.cdr

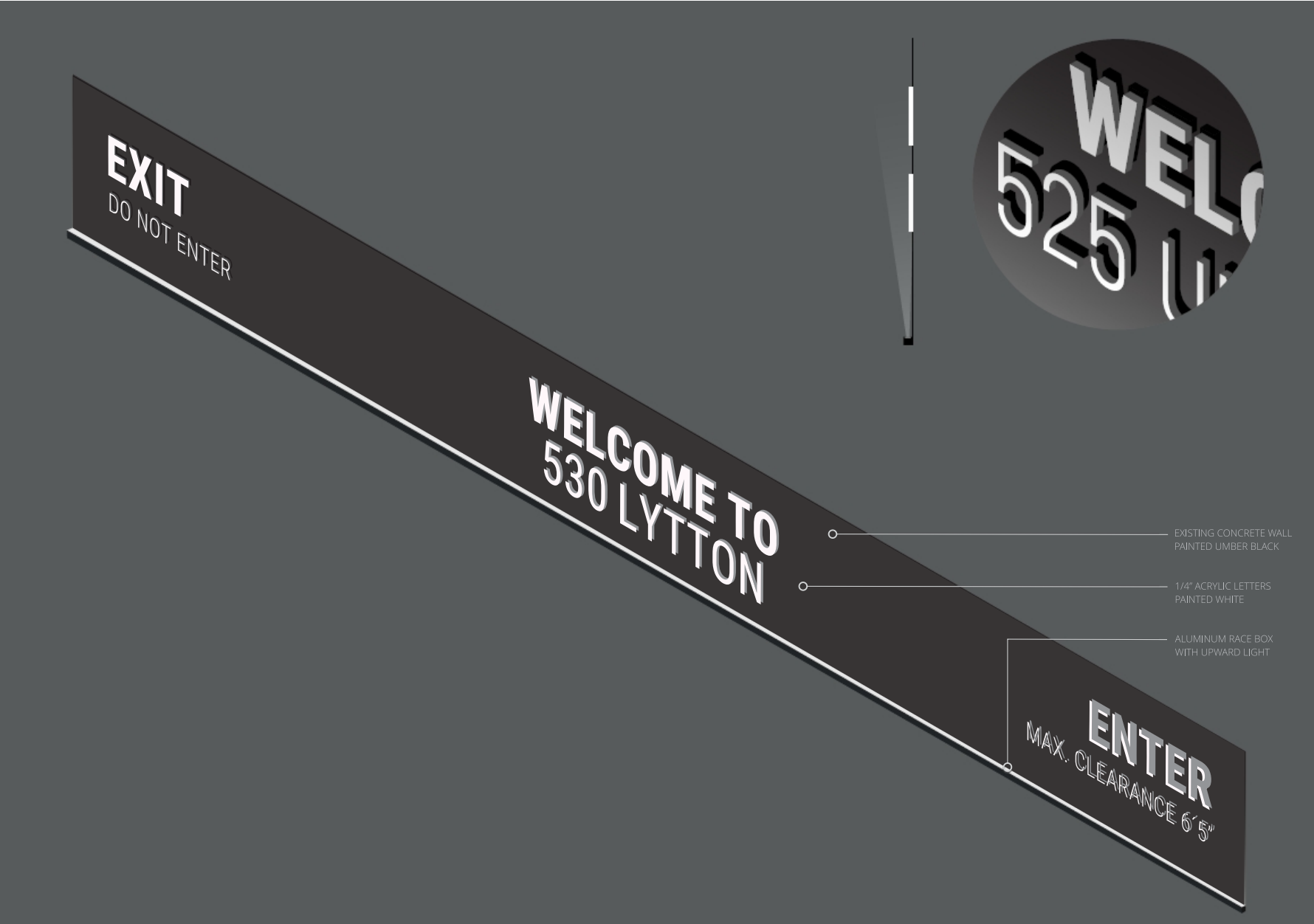
ORDER NUMBER  
**1514**

SIGN TYPE  
**D**

SHEET TITLE  
OVERHEAD PARKING ID

All drawings as well as creative content are the property of Corporate Sign Systems. You must have written consent by a Corporate Sign Systems' Officer prior to disclosure, reproduction, or distribution outside of your organization.

PAGE NUMBER  
**14**



CLIENT  
525 UNIVERSITY

PROJECT

530  
LYTTON

530 LYTTON AVE  
PALO ALTO, CA 94301

DRAWING / REVISION DATE

06/29/23 - YY 02/06/24 - YY  
07/05/23 - YY 02/09/24 - YY  
07/11/23 - YY 02/13/24 - YY  
07/26/23 - YY  
07/28/23 - YY  
08/24/23 - YY  
01/25/24 - YY

FILE NAME / LOCATION

Orchard Commercial\525  
University Ave\\_LUX\Drawings\  
1514 530 LYTTON Exterior.cdr

ORDER NUMBER

1514

SIGN TYPE

D

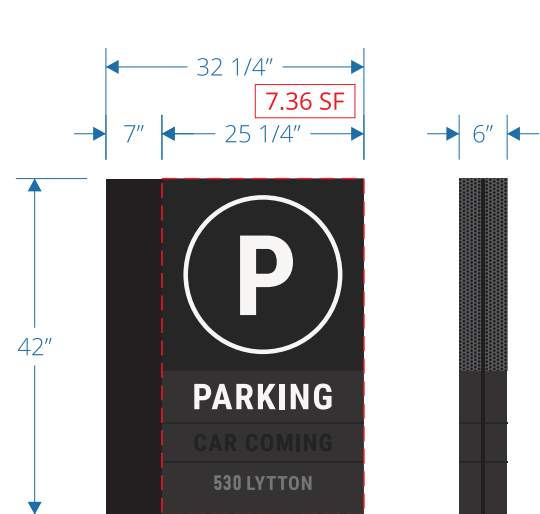
SHEET TITLE

OVERHEAD PARKING ID

All drawings as well as creative content are the property of Corporate Sign Systems. You must have written consent by a Corporate Sign Systems’ Officer prior to disclosure, reproduction, or distribution outside of your organization.

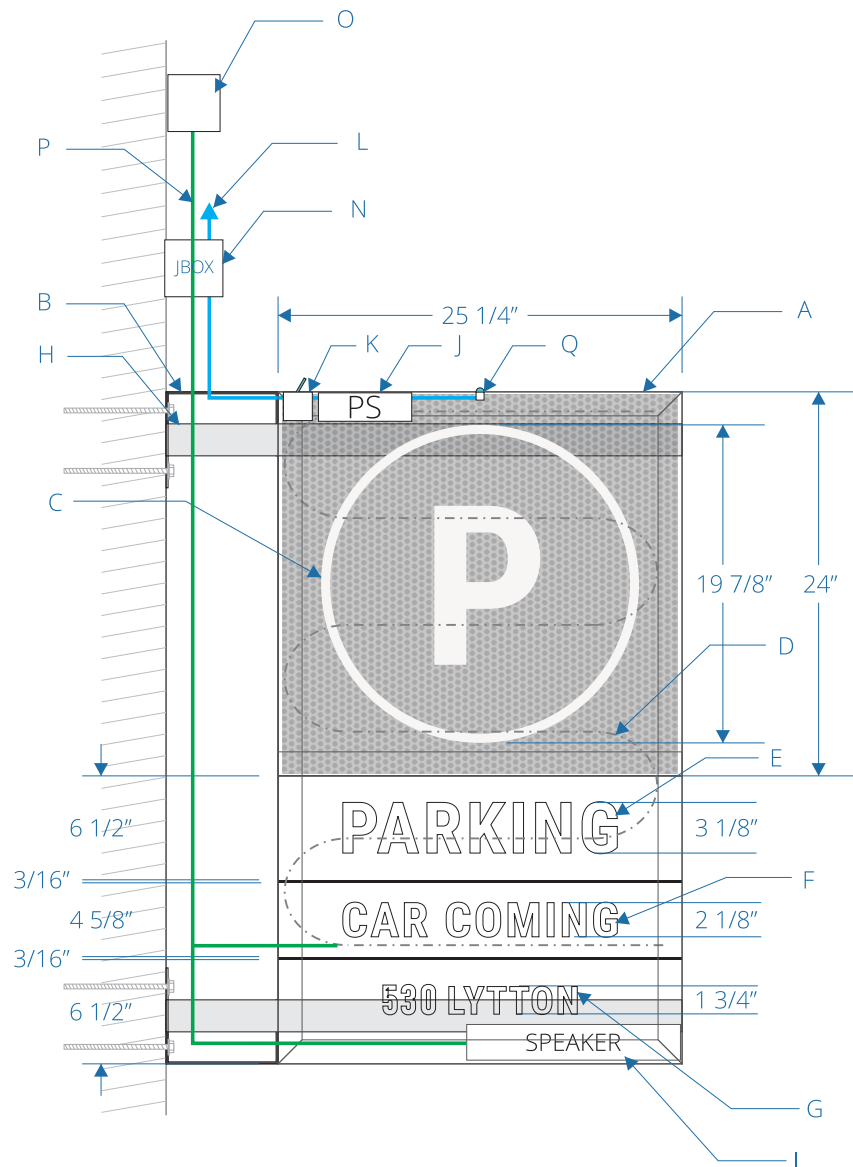
PAGE NUMBER

15

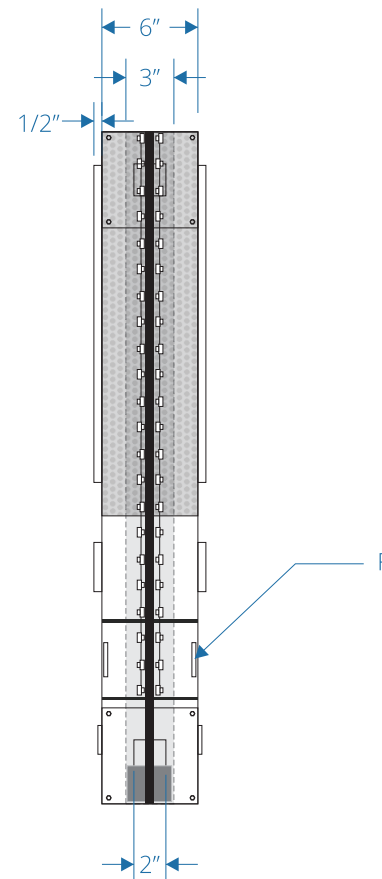


1 FRONT VIEW  
scale: 1/2" = 1'-0"

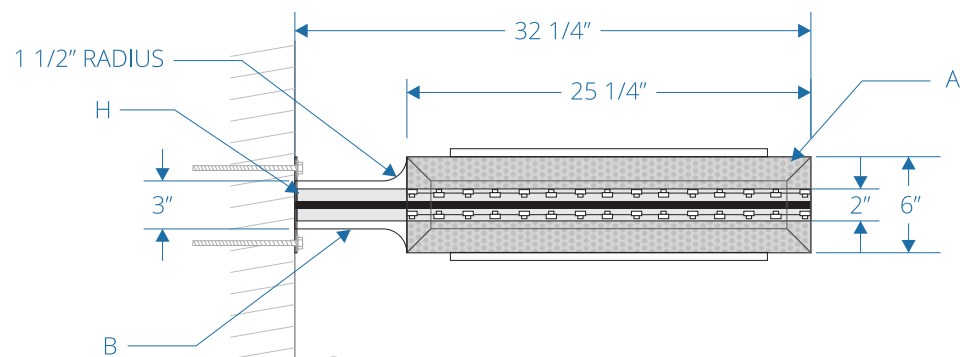
This sign is intended to be installed in accordance with the requirements of Article 600 of the National Electrical Code and/or other applicable local codes. This includes proper grounding and bonding of the sign.



2 FRONT VIEW - DETAIL  
scale: 1" = 1'-0"



3 SIDE VIEW - DETAIL  
scale: 1" = 1'-0"



4 TOP VIEW  
scale: 1" = 1'-0"

- DESCRIPTION QTY: 1
- A. 42"h x 25 1/4"w x 6"d fabricated aluminum cabinet with partially 24"h x 25 1/4"w perforated panel at the top part and internally illuminated, painted C1dark gray
  - B. 42"h x 7"w x 3"d fabricated aluminum structure, painted C1 dark gray
  - C. 1/2" thick acrylic graphic and lettering push thru, painted C2 white
  - D. LEDs
  - E. 3 1/8"h x 1/2" thick push thru acrylic "Parking " lettering, painted C2 white
  - F. cutout lettering with vehicle detection sensor program to lit, applied red LEDs and day night acrylic.
  - G. 1 3/4"h x 1/4" thick FCO address lettering stainless steel
  - H. 2" x 2" aluminum tube post with 1/4" thick aluminum plate attached with tapcon concrete anchor bolt to wall
  - I. installed speaker inside the sign cabinet (see spec sheet for programming and installation detail)
  - J. 110v-277v ul listed power supply
  - K. disconnect switch box
  - L. primary line 110-277v on dedicated circuit 20AMP by others
  - N. J-box by others
  - O. "Car Coming" controller box supplier by sign contractor installed and programmed by OTHERS
  - P. 12v line brought to the sign by OTHERS. Connection made by sign contractor.
  - Q. Photocell
- Notes: Programming and wiring of the "car coming" sensor and controller by OTHERS

CLIENT  
525 UNIVERSITY

PROJECT  
530  
LYTTON

530 LYTTON AVE  
PALO ALTO, CA 94301

DRAWING / REVISION DATE  
06/29/23 - YY 02/06/24 - YY  
07/05/23 - YY 02/09/24 - YY  
07/11/23 - YY 02/13/24 - YY  
07/26/23 - YY  
07/28/23 - YY  
08/24/23 - YY  
01/25/24 - YY

FILE NAME / LOCATION  
Orchard Commercial\525  
University Ave\\_LUX\Drawings\  
1514 530 LYTTON Exterior.cdr

ORDER NUMBER  
1514

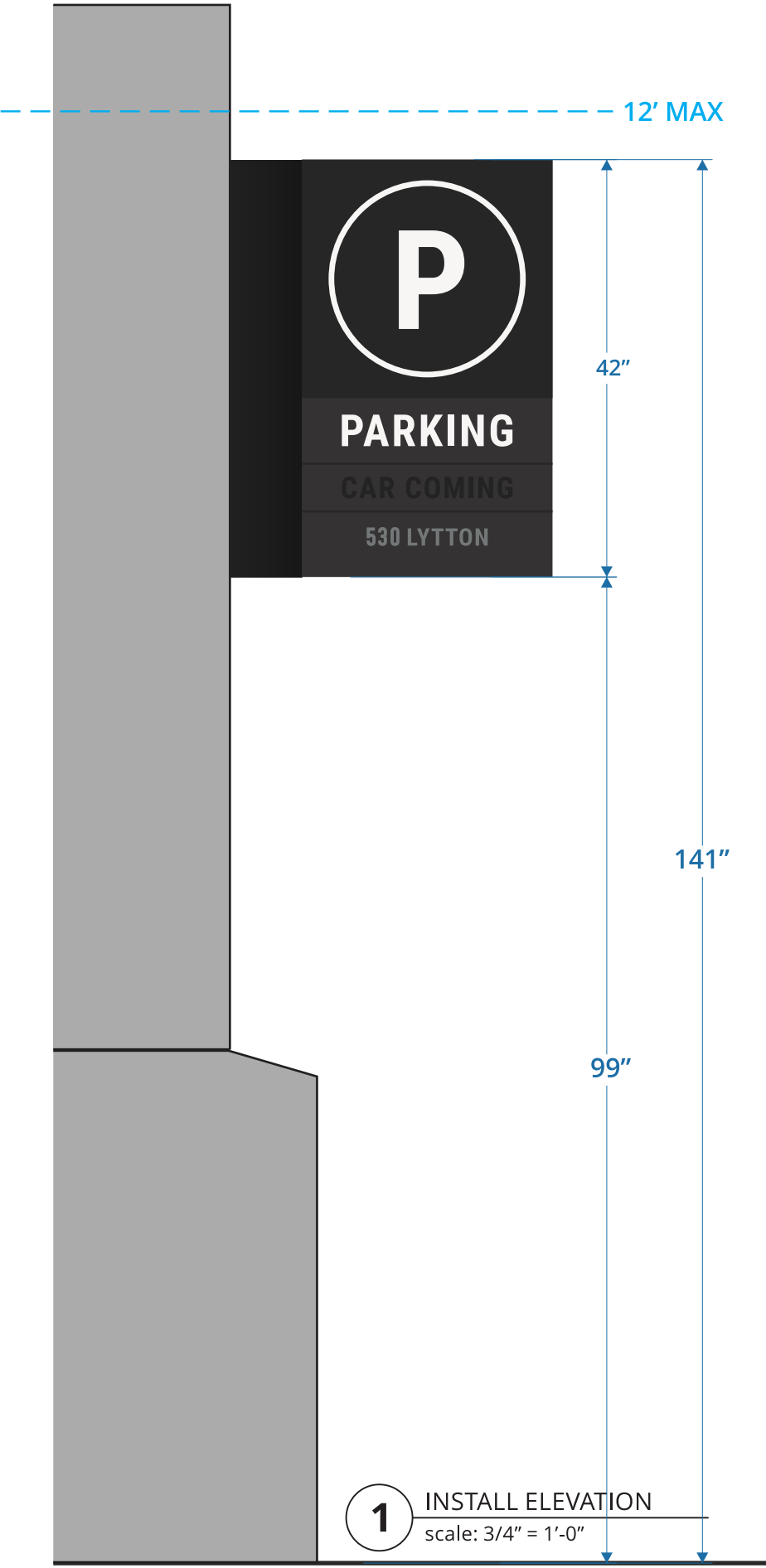
SIGN TYPE  
E

SHEET TITLE  
BLADE PARKING ID

All drawings as well as creative content are the property of Corporate Sign Systems. You must have written consent by a Corporate Sign Systems' Officer prior to disclosure, reproduction, or distribution outside of your organization.

PAGE NUMBER  
16





**1** INSTALL ELEVATION  
scale: 3/4" = 1'-0"



**2** RENDERING  
scale: NTS

CLIENT  
525 UNIVERSITY

PROJECT  
**530**  
LYTTON

530 LYTTON AVE  
PALO ALTO, CA 94301

DRAWING / REVISION DATE  
06/29/23 - YY 02/06/24 - YY  
07/05/23 - YY 02/09/24 - YY  
07/11/23 - YY 02/13/24 - YY  
07/26/23 - YY  
07/28/23 - YY  
08/24/23 - YY  
01/25/24 - YY

FILE NAME / LOCATION  
Orchard Commercial\525  
University Ave\\_LUX\Drawings\  
1514 530 LYTTON Exterior.cdr

ORDER NUMBER  
**1514**

SIGN TYPE  
**E**

SHEET TITLE  
BLADE PARKING ID

All drawings as well as creative content are the property of Corporate Sign Systems. You must have written consent by a Corporate Sign Systems' Officer prior to disclosure, reproduction, or distribution outside of your organization.

PAGE NUMBER  
**17**



CLIENT  
525 UNIVERSITY

PROJECT  
**530**  
LYTTON

530 LYTTON AVE  
PALO ALTO, CA 94301

DRAWING / REVISION DATE

06/29/23 - YY 02/06/24 - YY  
07/05/23 - YY 02/09/24 - YY  
07/11/23 - YY 02/13/24 - YY  
07/26/23 - YY  
07/28/23 - YY  
08/24/23 - YY  
01/25/24 - YY

FILE NAME / LOCATION

Orchard Commercial\525  
University Ave\\_LUX\Drawings\  
1514 530 LYTTON Exterior.cdr

ORDER NUMBER

1514

SIGN TYPE

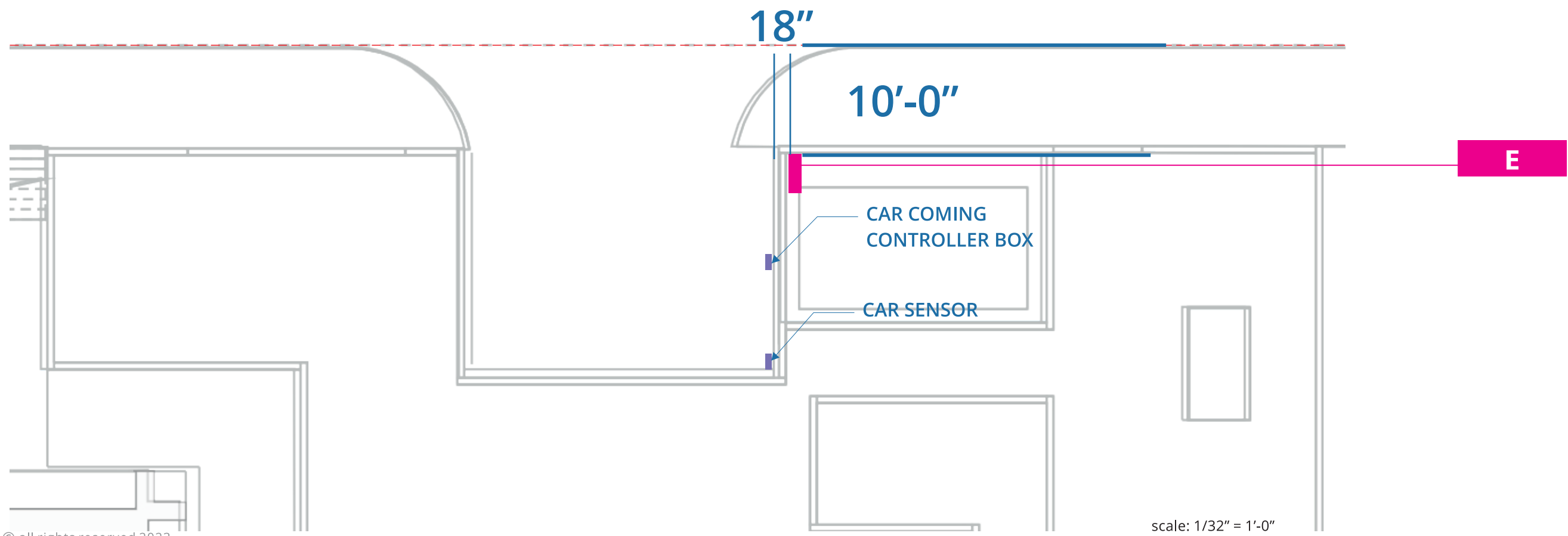
SHEET TITLE  
ELEVATION

All drawings as well as creative content are the property of Corporate Sign Systems. You must have written consent by a Corporate Sign Systems' Officer prior to disclosure, reproduction, or distribution outside of your organization.

PAGE NUMBER

18



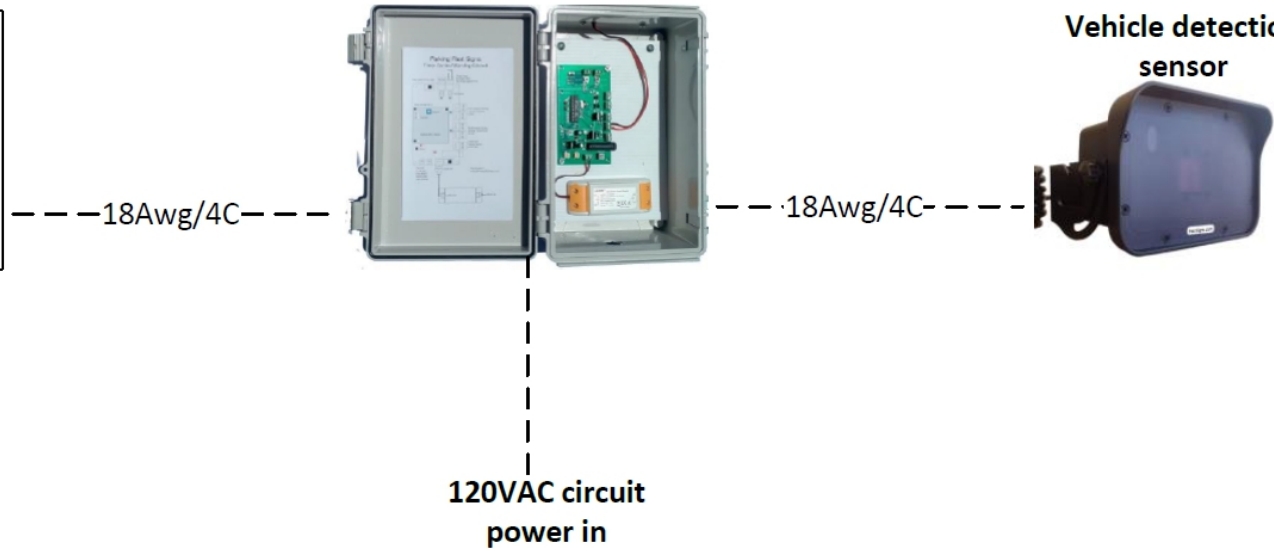


© all rights reserved 2023

(1) Pass Signs  
Controller PSC-5  
with 12VDC 6A  
power supply

Vehicle detection  
sensor

Customers Sign  
If speaker is inside  
sign use 18AWG/4C,  
if not use 18AWG/2C



CLIENT  
525 UNIVERSITY

PROJECT  
**530**  
LYTTON  
530 LYTTON AVE  
PALO ALTO, CA 94301

DRAWING / REVISION DATE  
06/29/23 - YY 02/06/24 - YY  
07/05/23 - YY 02/09/24 - YY  
07/11/23 - YY 02/13/24 - YY  
07/26/23 - YY  
07/28/23 - YY  
08/24/23 - YY  
01/25/24 - YY

FILE NAME / LOCATION  
Orchard Commercial\525  
University Ave\\_LUX\Drawings\  
1514 530 LYTTON Exterior.cdr

ORDER NUMBER  
**1514**

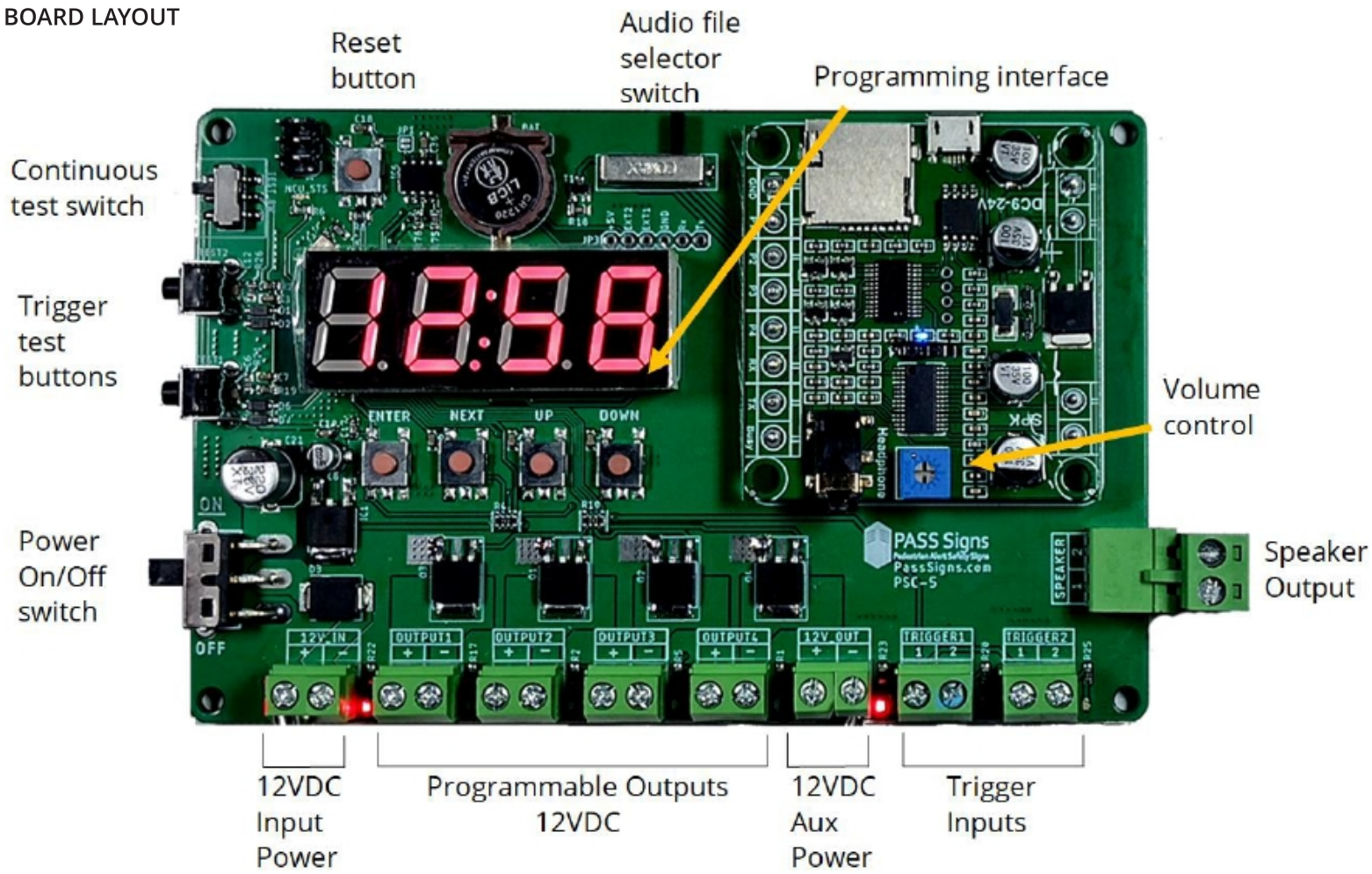
SIGN TYPE

SHEET TITLE  
SPEC SHEET DETAIL

All drawings as well as creative content  
are the property of Corporate Sign  
Systems. You must have written consent  
by a Corporate Sign Systems' Officer prior  
to disclosure, reproduction, or distribution  
outside of your organization.

PAGE NUMBER  
**19**

BOARD LAYOUT



Quick Features

- (4) Timed outputs programmed for either flashing or constant output
- (2) Dry inputs programmed to trigger from Normally Open or Normally Closed
- (1) Timed speaker output with volume control and (4) channel selectable audio files
- Nighttime Audio cut-off timer (turn off audio output during designated times; example 8pm to 7am)
- Real-time clock onboard with programmable interface

CLIENT  
525 UNIVERSITY

PROJECT  
**530**  
LYTTON

530 LYTTON AVE  
PALO ALTO, CA 94301

DRAWING / REVISION DATE

06/29/23 - YY 02/06/24 - YY  
07/05/23 - YY 02/09/24 - YY  
07/11/23 - YY 02/13/24 - YY  
07/26/23 - YY  
07/28/23 - YY  
08/24/23 - YY  
01/25/24 - YY

FILE NAME / LOCATION

Orchard Commercial\525  
University Ave\\_LUX\Drawings\  
1514 530 LYTTON Exterior.cdr

ORDER NUMBER

**1514**

SIGN TYPE

SHEET TITLE

SPEC SHEET DETAIL

All drawings as well as creative content are the property of Corporate Sign Systems. You must have written consent by a Corporate Sign Systems' Officer prior to disclosure, reproduction, or distribution outside of your organization.

PAGE NUMBER

**20**



VEHICLE MOTION DETECTOR - DIRECTIONAL LOGIC

PART NUMBER: PS-VMD-DL  
USED TO DETECT MOTION IN AN AREA FROM 10'X10' TO 21'X28' IN FRONT OF THE MOTION



Applications:

- ◆ Activating Parking Alert Signs for vehicles
- ◆ Activating roll-up doors, barriers, and gates
- ◆ Activating Parking Alert Signs for pedestrians
- ◆ Activating alarms
- ◆ Activating light control systems
- ◆ Wrong-way vehicle traffic
- ◆ Wrong-way pedestrian traffic

Start up takes 30 seconds

Green LED - Detection of Vehicle  
Red LED - Detection of Pedestrian

\*\*Ceiling mounting: turn back bracket over, see page 3.

Wiring & Connections to PASS Signs Controller  
(see page 3 for terminations)

	Sensor Wire	Function	Pass Signs Control Board Connection
Vehicle Detection	Red	V+ (12-36V)	12V+ Out
	Black	V- (12-36V)	12V- Out
	White	Relay 1 NO	Trigger1
	Yellow	Relay 1 COM	Trigger1
	Brown	Relay 1 NC	
Pedestrian Detection	Blue	Relay 2 NO	Trigger1
	Green	Relay 2 COM	Trigger1
	Grey	Relay 2 NC	

Direction Recognition from sensor:	Mode 1: Motion forward Mode 2: Motion backwards Mode 3: Motion in both directions
Mounting Height:	6ft ~ 28ft
Mounting Type:	Wall or Ceiling, 0° to 90°
Detection Area:	Min 10ft(w) x 10ft(d) at 6ft height Max 21ft(w) x 28ft(d) at 28ft height
Relay Info	Holding time - .2, .5, 1, 2, 5 secs 24VDC@1.0A 125VAC@0.5A

Function 1: Directional Logic Vehicle Motion Detection

Detects ONLY cars and ONLY in a single direction. This prevents false detection from pedestrians walking through the area and vehicles traveling in the opposite direction.

Vehicle Applications:

- Activating vehicle exit signs
- Activating ramp warning signs
- Activating traffic control systems
- Opening garage or roll-up doors

Function 2: Directional Logic Pedestrian Motion Detection

Detects ONLY pedestrians and ONLY in a single direction. This prevents false detection from pedestrians walking opposite direction or crossing the zone.

Pedestrian Applications:

- Activating pedestrian detection systems
- Activating storefront automatic doors
- Activating crosswalk systems

Application technology	Doppler radar
Transmission frequency	24.125GHz
Transmission power	<20dBm
Detection speed	2.0in/s – 15.5mph
Operation current	<100mA
Power frequency	50Hz
Temperature range	-22 °F ~ + 140 °F
Relative humidity	0% to 95%, no condensation
Protection grade	IP65
Relay output	24VDC@1.0A 125VAC@0.5A
External dimensions	6.46in x 4.37in x 3.72in
Cable length	23ft
Sensor weight	1.5lbs

CLIENT  
525 UNIVERSITY

PROJECT

530

LYTTON

530 LYTTON AVE  
PALO ALTO, CA 94301

DRAWING / REVISION DATE

06/29/23 - YY 02/06/24 - YY  
07/05/23 - YY 02/09/24 - YY  
07/11/23 - YY 02/13/24 - YY  
07/26/23 - YY  
07/28/23 - YY  
08/24/23 - YY  
01/25/24 - YY

FILE NAME / LOCATION

Orchard Commercial\525  
University Ave\\_LUX\Drawings\  
1514 530 LYTTON Exterior.cdr

ORDER NUMBER

1514

SIGN TYPE

SHEET TITLE  
SPEC SHEET DETAIL

All drawings as well as creative content are the property of Corporate Sign Systems. You must have written consent by a Corporate Sign Systems' Officer prior to disclosure, reproduction, or distribution outside of your organization.

PAGE NUMBER

21

EXISTING SIGN TO BE REMOVED (38.5 SF)



X1

CLIENT  
525 UNIVERSITY

PROJECT  
**530**  
LYTTON

530 LYTTON AVE  
PALO ALTO, CA 94301

DRAWING / REVISION DATE  
06/29/23 - YY 02/06/24 - YY  
07/05/23 - YY 02/09/24 - YY  
07/11/23 - YY 02/13/24 - YY  
07/26/23 - YY  
07/28/23 - YY  
08/24/23 - YY  
01/25/24 - YY

FILE NAME / LOCATION  
Orchard Commercial\525  
University Ave\\_LUX\Drawings\  
1514 530 LYTTON Exterior.cdr

ORDER NUMBER  
**1514**

SIGN TYPE  
[Redacted]

SHEET TITLE  
EXISTING SIGN

All drawings as well as creative content are the property of Corporate Sign Systems. You must have written consent by a Corporate Sign Systems' Officer prior to disclosure, reproduction, or distribution outside of your organization.

PAGE NUMBER  
**22**



PROJECT

530 LYTTON AVE  
PALO ALTO, CA 94301

DRAWING / REVISION DATE

06/29/23 - YY 02/06/24 - YY  
07/05/23 - YY 02/09/24 - YY  
07/11/23 - YY 02/13/24 - YY  
07/26/23 - YY  
07/28/23 - YY  
08/24/23 - YY  
01/25/24 - YY

FILE NAME / LOCATION

Orchard Commercial\525  
University Ave\\_LUX\Drawings\  
1514 530 LYTTON Exterior.cdr

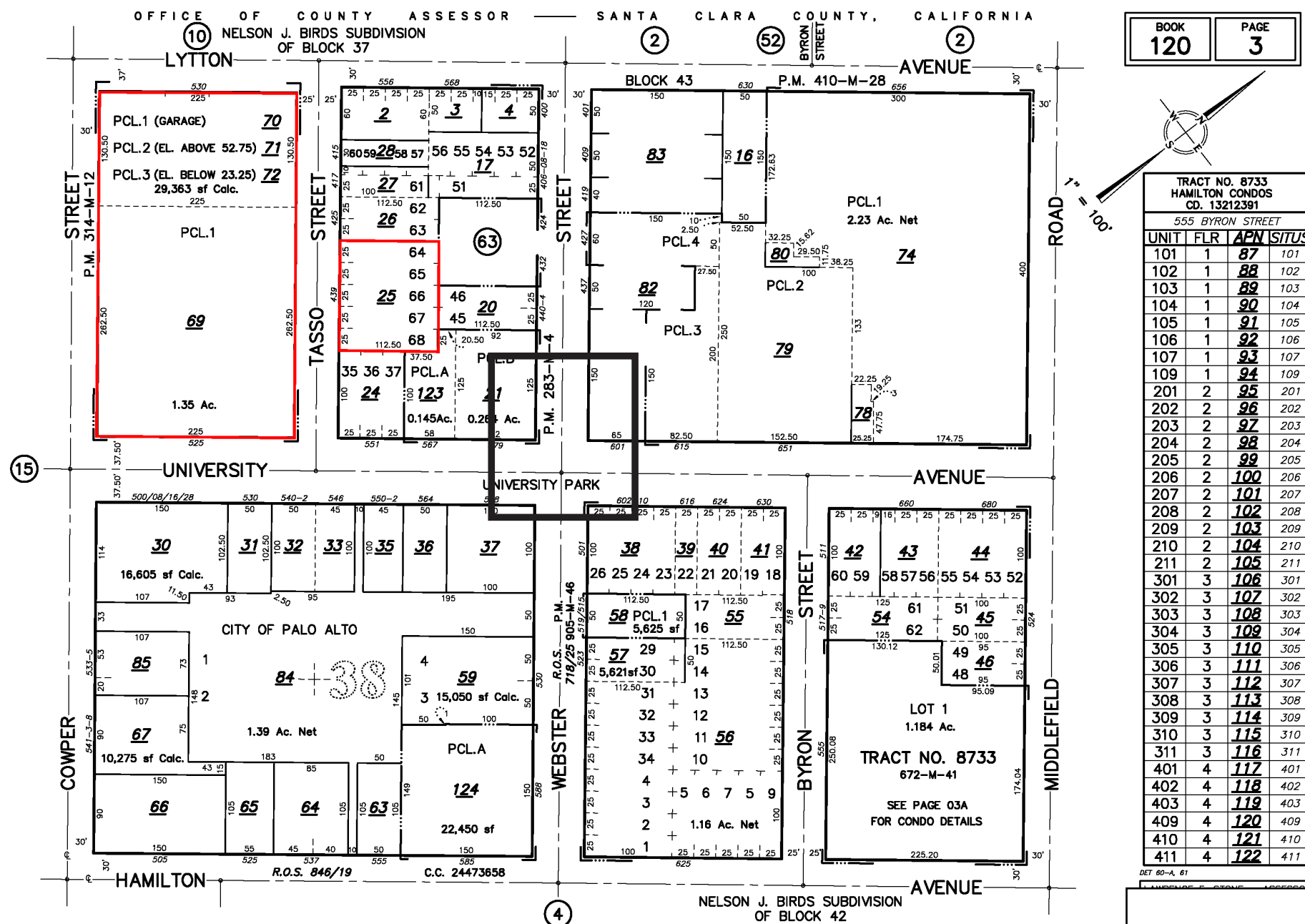
ORDER NUMBER

SIGN TYPE

SHEET TITLE  
PARCEL MAP

All drawings as well as creative content are the property of Corporate Sign Systems. You must have written consent by a Corporate Sign Systems' Officer prior to disclosure, reproduction, or distribution outside of your organization.

PAGE NUMBER



CLIENT  
525 UNIVERSITY

PROJECT  
**530**  
LYTTON

530 LYTTON AVE  
PALO ALTO, CA 94301

DRAWING / REVISION DATE  
06/29/23 - YY 02/06/24 - YY  
07/05/23 - YY 02/09/24 - YY  
07/11/23 - YY 02/13/24 - YY  
07/26/23 - YY  
07/28/23 - YY  
08/24/23 - YY  
01/25/24 - YY

FILE NAME / LOCATION  
Orchard Commercial\525  
University Ave\\_LUX\Drawings\  
1514 530 LYTTON Exterior.cdr

ORDER NUMBER  
1514

SIGN TYPE

SHEET TITLE  
T24 CERTIFICATE

All drawings as well as creative content are the property of Corporate Sign Systems. You must have written consent by a Corporate Sign Systems’ Officer prior to disclosure, reproduction, or distribution outside of your organization.

PAGE NUMBER  
24



408.292.1600  
2464 De La Cruz Blvd., Santa Clara, CA 95050  
www.corporatesigns.com  
CONTRACTOR'S LIC# 765078  
CLASS C45-ELECTRICAL SIGN CONTRACTOR

CLIENT  
525 UNIVERSITY

PROJECT  
**530**  
LYTTON

530 LYTTON AVE  
PALO ALTO, CA 94301

DRAWING / REVISION DATE

06/29/23 - YY 02/06/24 - YY  
07/05/23 - YY 02/09/24 - YY  
07/11/23 - YY 02/13/24 - YY  
07/26/23 - YY  
07/28/23 - YY  
08/24/23 - YY  
01/25/24 - YY

FILE NAME / LOCATION

Orchard Commercial\525  
University Ave\\_LUX\Drawings\  
1514 530 LYTTON Exterior.cdr

ORDER NUMBER

1514

SIGN TYPE



SHEET TITLE  
T24 CERTIFICATE

All drawings as well as creative content are the property of Corporate Sign Systems. You must have written consent by a Corporate Sign Systems' Officer prior to disclosure, reproduction, or distribution outside of your organization.

PAGE NUMBER

25

CLIENT  
525 UNIVERSITY

PROJECT  
**530**  
LYTTON

530 LYTTON AVE  
PALO ALTO, CA 94301

DRAWING / REVISION DATE

06/29/23 - YY 02/06/24 - YY  
07/05/23 - YY 02/09/24 - YY  
07/11/23 - YY 02/13/24 - YY  
07/26/23 - YY  
07/28/23 - YY  
08/24/23 - YY  
01/25/24 - YY

FILE NAME / LOCATION

Orchard Commercial\525  
University Ave\\_LUX\Drawings\  
1514 530 LYTTON Exterior.cdr

ORDER NUMBER

1514

SIGN TYPE



SHEET TITLE  
T24 CERTIFICATE

All drawings as well as creative content are the property of Corporate Sign Systems. You must have written consent by a Corporate Sign Systems' Officer prior to disclosure, reproduction, or distribution outside of your organization.

PAGE NUMBER

26



CLIENT  
525 UNIVERSITY

PROJECT  
530  
LYTTON

530 LYTTON AVE  
PALO ALTO, CA 94301

DRAWING / REVISION DATE

06/29/23 - YY 02/06/24 - YY  
07/05/23 - YY 02/09/24 - YY  
07/11/23 - YY 02/13/24 - YY  
07/26/23 - YY  
07/28/23 - YY  
08/24/23 - YY  
01/25/24 - YY

FILE NAME / LOCATION

Orchard Commercial\525  
University Ave\\_LUX\Drawings\  
1514 530 LYTTON Exterior.cdr

ORDER NUMBER

1514

SIGN TYPE



SHEET TITLE  
T24 CERTIFICATE

All drawings as well as creative content are the property of Corporate Sign Systems. You must have written consent by a Corporate Sign Systems’ Officer prior to disclosure, reproduction, or distribution outside of your organization.

PAGE NUMBER

27