



NORTH VENTURA

COORDINATED AREA PLAN



Working Group Meeting #2

Thursday November 15, 2018

5:30 pm – 7:30 pm

El Camino Room

Downtown Public Library

Palo Alto

THIS PAGE INTENTIONALLY LEFT BLANK

TABLE OF CONTENTS

1.	NVCAP WORKING GROUP MEETING SCHEDULE.....	1
2.	NVCAP WORKING GROUP WALKING TOUR REPORTING	3
3.	NVCAP WORKING GROUP MEETING #1 PUBLIC COMMENTS.....	5
4.	NVCAP WORKING GROUP MEETING #1MINUTES LINK	7

THIS PAGE INTENTIONALLY LEFT BLANK



NORTH VENTURA COORDINATED AREA PLAN WORKING GROUP MEETING SCHEDULE

Working Group Meeting Dates*	Topics
October 17, 2018	Introduction
November 15, 2018	Background Conditions
January 16, 2019	Visioning Workshop
February 2019 (Date TBD)	Joint Session with City Council
April 17, 2019	Evaluation of Draft Design Options
May 15, 2019	Review of Preferred Option
June 19, 2019	Draft Plan Components
August 21, 2019	Draft Plan
TBD	

- * Working Group Meetings will be held on the 3rd Wednesday of every month unless otherwise specified.
1. Community Workshop I to be held in January/February 2019.
 2. Community Workshop II to be held in May 2019.
 3. Public hearings to be held throughout timeline.

THIS PAGE INTENTIONALLY LEFT BLANK

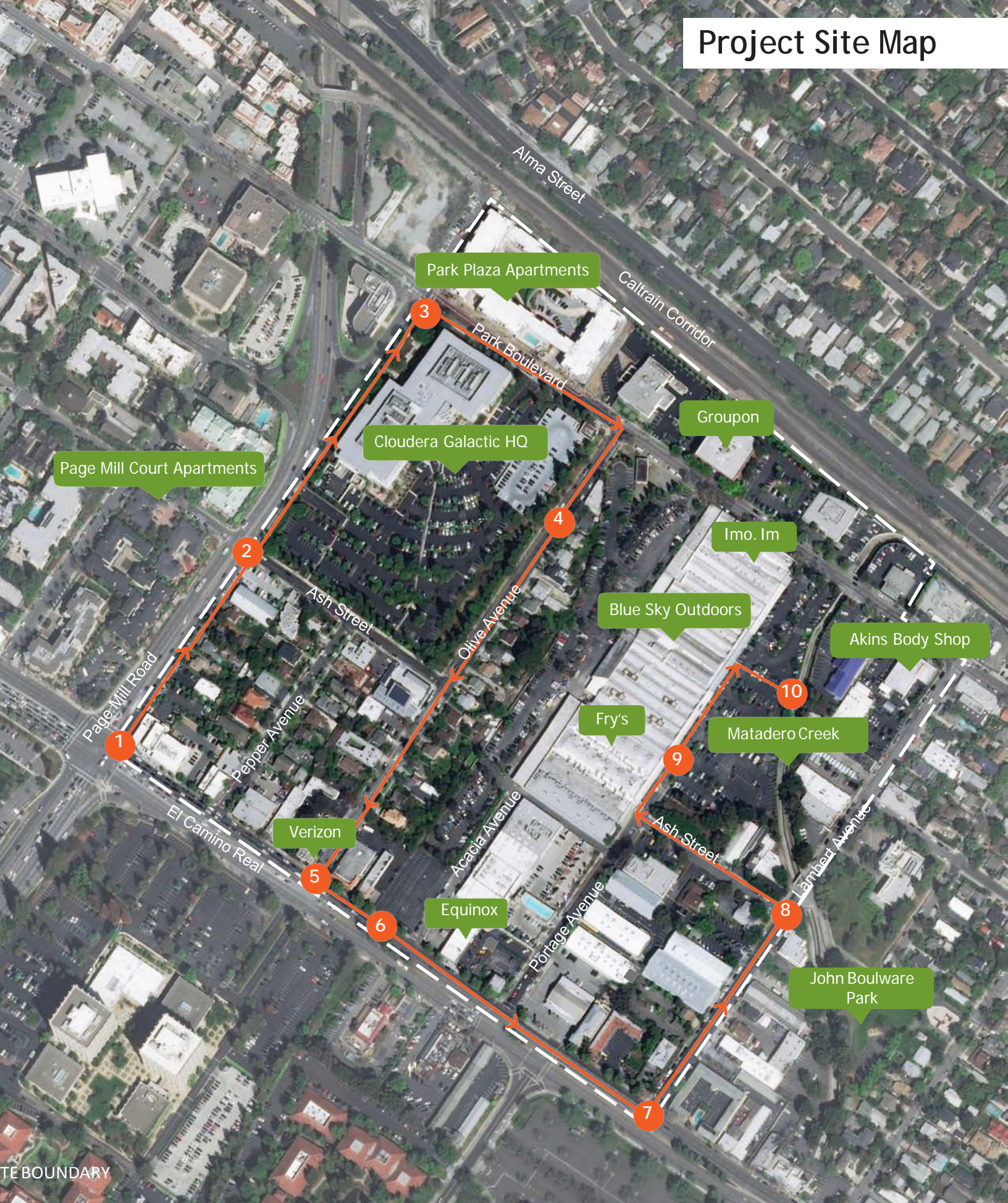


NORTH VENTURA COORDINATED AREA PLAN WALKING TOUR REPORTING

The following are the North Ventura neighborhood area walking tour questions from the NVCAP Working Group Booklet shared with you in the October 17th meeting. Please consider responding to the following questions while sharing your feedback at the November 15, 2018 meeting.

1. **Page Mill Road and El Camino Real:** As a potential gateway to the site, what public realm improvements would you like to see? This might include wider sidewalks, street trees, signage, improved pedestrian crossings etc.
2. **Page Mill Road and Ash Street:** For the surface parking lot at the corner of Ash Street and Page Mill Road, do you have any suggestions for improvements or other uses that you would like to see here? Notice the Page Mill Court Apartments across the street (outside project boundary); do you have any observations about the development scale in view of planning context applicable to NVCAP site?
3. **Page Mill Road and Park Boulevard:** What are your observations about the plaza at the southeast corner of Page Mill Road and Park Plaza? Do you have any suggestions for how the plaza use may be further enhanced? How does the experience of this street and open space compare the street and entry plaza across Page Mill Road? Notice the Park Plaza Apartments across Park Boulevard; how does the building and the ground floor retail impact the street? What other public benefits would you like to see with new development?
Park Boulevard: What would you consider as successful pedestrian-bike components of Park Boulevard? What improvements would you like to see?
4. **Olive Avenue:** How would you describe the experience of the street as it moves along various frontages from small business, to surface parking lot, to single-family residential? Are there ways to further improve the pedestrian experience along the street?
5. **Olive Avenue and El Camino Real:** Notice how Olive Avenue meets El Camino Real; could there be improvements made to this intersection? This might include wider sidewalks, street trees, signage, improved pedestrian crossings etc.
6. **El Camino Real:** Notice the surface parking lot to the west of Acacia Avenue; are there improvements or other uses you would like to see here?
7. **El Camino Real and Lambert Avenue:** How would you describe your experience as you've walked along El Camino Real from Olive Avenue to Lambert Avenue? How might this experience be improved? This might include wider sidewalks, street trees, signage, improved pedestrian crossings etc.
8. **Lambert Avenue and Ash Street:** Notice the small plaza and culverted creek at the southeast corner of Lambert Avenue and Ash Street? Are there any creeks and open space improvements that could be considered as part of the CAP?
9. **Ash Avenue and Portage Avenue:** What do you like about the Fry's Electronics building? Are there other uses that you would like to see here? Do you have suggestions for improvements or uses for the adjoining surface parking lot?
10. **Matadero Creek:** How would you like to see the condition of and access to the creek improved?

Project Site Map



TE BOUNDARY





**NORTH VENTURA COORDINATED AREA PLAN
WORKING GROUP Meeting #2
PUBLIC COMMENTS
Thursday, November 15, 2018**

The following public comment was received on 10/17/2018

From: Claire Elliott [<mailto:clairee44@gmail.com>]
Sent: Wednesday, October 17, 2018 12:13 PM
To: North Ventura Coordinated Area Plan
Cc: Doug Kent; Elaine Johnson
Subject: Meeting tonight

Hi NVCAP team,

My husband and I are coming a bit late tonight. We hope to be there by 6 latest. We have received a list of concerns from a neighbor to share and added to it. They include:

1. Increased traffic with higher density
2. Parking (and lack of.) Business traffic already spilling into neighborhood.
3. Safety of the bike boulevard along Park Blvd and potential for bike path along the train tracks
4. Homeless vehicle parking in the neighborhood—city should offer safe space for these vehicles.
5. Need for an additional park/open space in the Fry's development area—include making the creek a natural asset not an drainage channel.
6. Basements and underground parking that are sealed even before construction so they don't need to drain the local groundwater table with sump pumps.

Thanks,

Claire Elliott

Doug Kent

Elaine Johnson

THIS PAGE INTENTIONALLY LEFT BLANK



**NORTH VENTURA COORDINATED AREA PLAN
WORKING GROUP Meeting #2
PUBLIC COMMENTS
Thursday, November 15, 2018**

The following is the link to October 17, 2018 meeting minutes:

<https://www.cityofpaloalto.org/civicax/filebank/blobdload.aspx?t=52421.32&BlobID=67634>

THIS PAGE INTENTIONALLY LEFT BLANK