



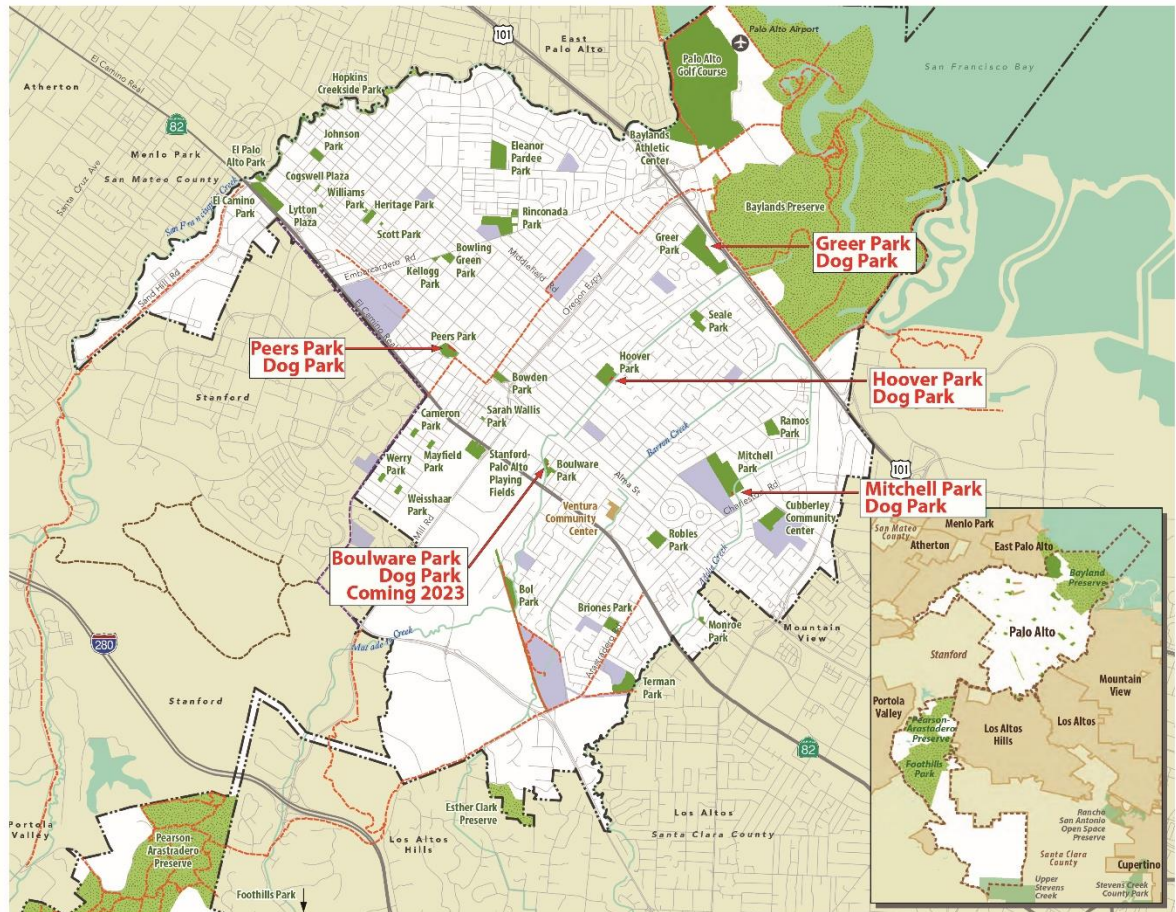
Mitchell Park Dog Park Renovation Project

Palo Alto Dog Park System Overview

Dog Parks in Palo Alto

- Current Dog Park System - 4 existing Dog Parks
 - Mitchell Park (.56 acres)
 - Peers Park (.84 acres)
 - Greer Park (.06 acres)
 - Hoover Park (.14 acres)

Palo Alto Dog Park Locations

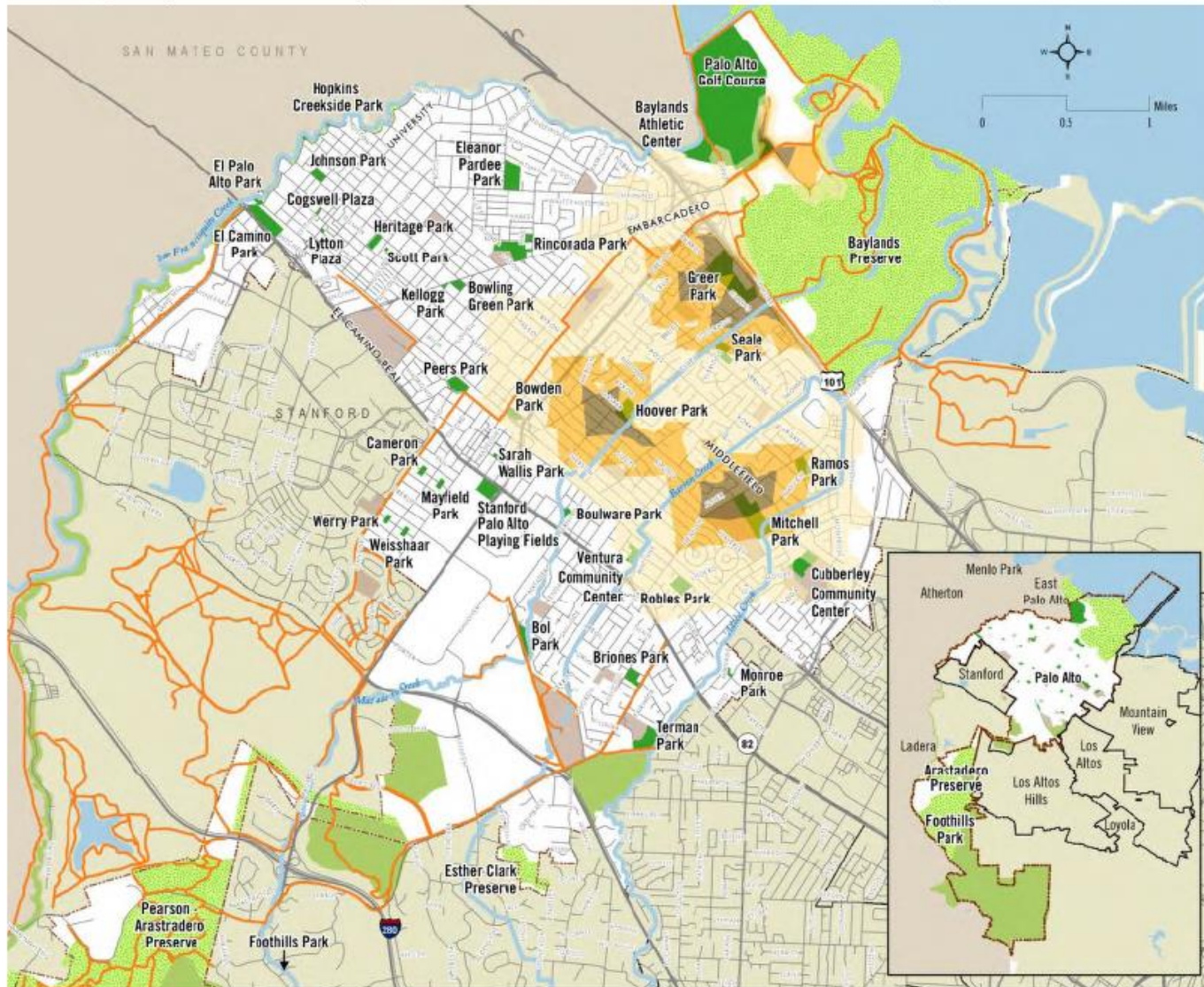


Palo Alto Off Leash Dog Policy

- Current Palo Alto Dog Policy in Park
 - No off-leash dog activity is currently permitted in any Palo Alto Parks; unless in a fenced designated dog park area
 - A citation and fine can be issued to dog owners if the dog is off-leash in park
 - City actively trying to expand dog park system to provide areas for off-leash dog activity in underserved areas

Dog Parks in Palo Alto

Geographic Analysis: Access to Off-Leash Dog Facilities



Palo Alto Dog Park Expansion and Enhancement

- Palo Alto Dog Park Expansion Project History
 - City has been actively trying to expand the dog park system in Palo Alto since 2010 and prior
 - City Council Prioritized the expansion of dog parks as a city goal in 2017 (Adoption of Parks Master Plan)
 - An on-going Capital Improvement Project was established for the expansion and enhancement of dog parks in 2018 provides funding of \$150,000 per project – funded by park impact fees
 - An additional of a dog park in North Palo Alto was prioritized as the 3 existing dog parks all existed in the south
- Recent Projects
 - The construction of the Peers Park Dog Park in 2018
 - The construction of the Boulware Park (coming spring of 2023)
- Future Projects
 - Expansion and Enhancement of the Mitchell Park Dog Park
 - Exploring off-leash dog use areas in park (Pilot Program)

Mitchell Park Dog Park Renovation Project

Mitchell Park Dog Park Renovation Project



Existing Mitchell Dog Park Area

Existing Dog Park Size:

24,263 sq.ft. or .56 acre

Current Amenities:

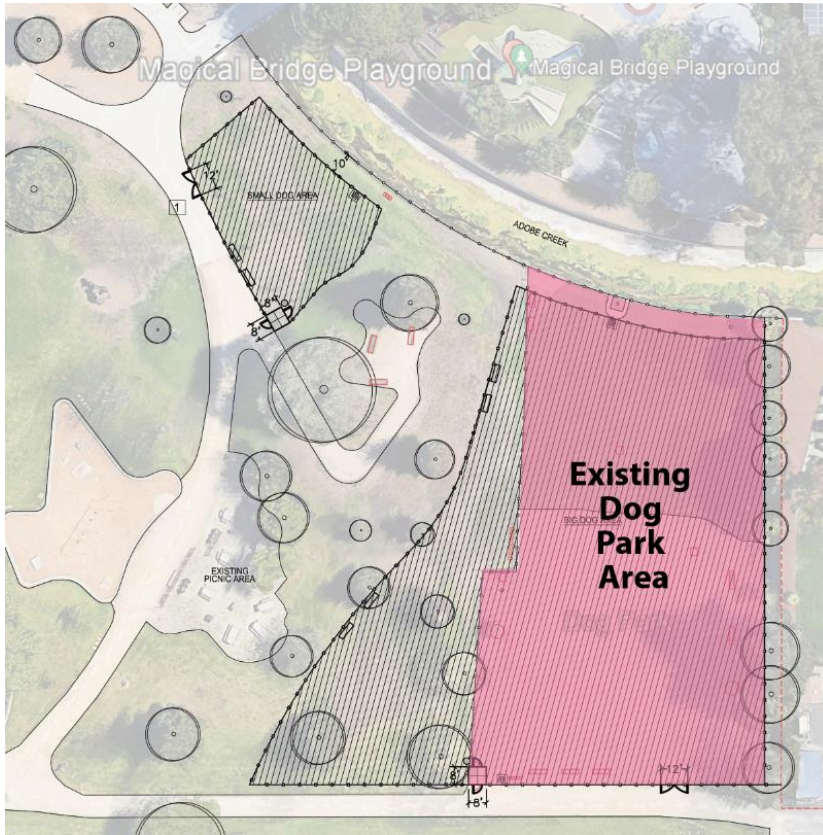
- (2) Hose Bibs
- (7) Benches
- (2) Picnic Tables
- (1) Waste Receptacle



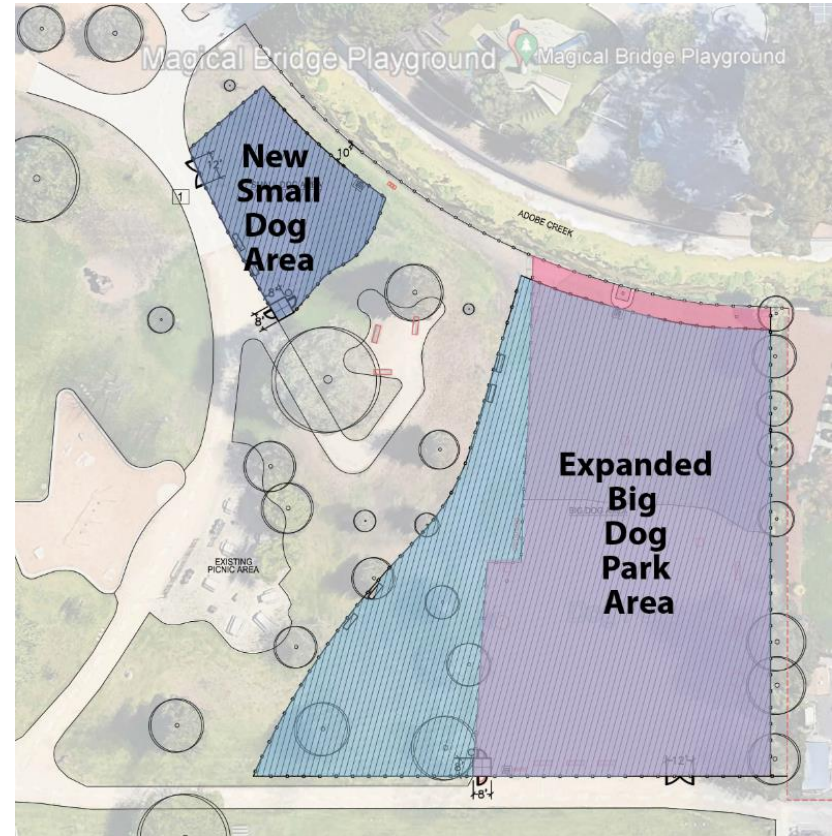
Proposed Scope of Project

- Expand the size of the current dog park
- Create a separate small dog park
- Replace the existing fencing with 5' tall black vinyl clad chain link fencing
- Replace double gate entry with larger entry for service vehicles to use
- Add additional seating
- Relocate hose bibs in big dog park and provide one in small dog park area
- Reconfigure irrigation to maintain grass in expanded dog park area
- Move the dog park out of the 10' wide creek easement
- Keep the picnic area and hilltop separate from the dog park area
- Replace hilltop slope grass with a no mow variety to reduce maintenance

Proposed Expansion Plan



Existing Dog Park Area



Expanded Big Dog Park Area &
Added New Small Dog Area

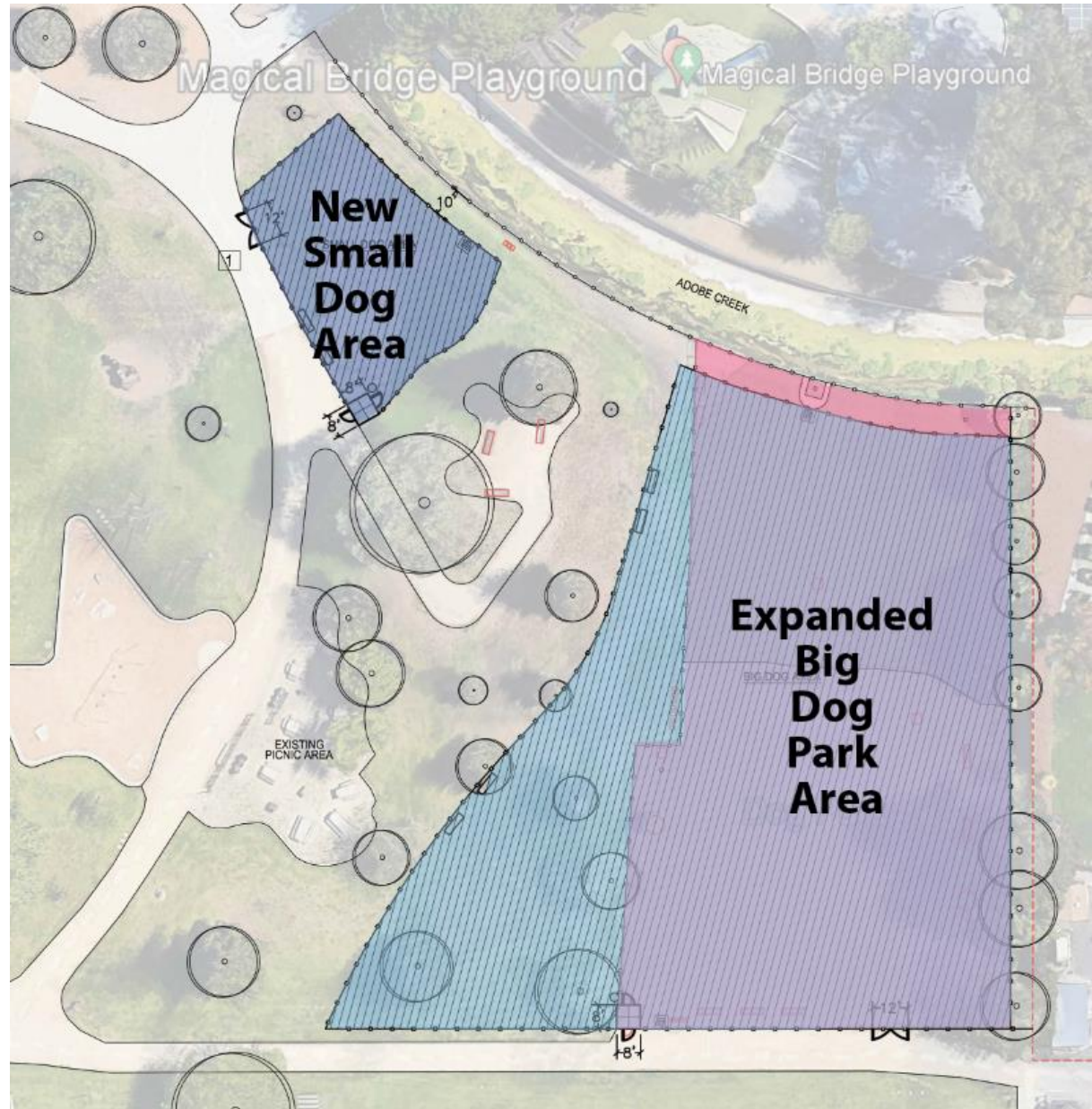
Proposed Expansion Plan

Existing Dog Park Size:
24,263 sq.ft. or .56 acre

New Big Dog Park Size:
34,244 sq.ft. or .79 acre
(increase of .23 acres)

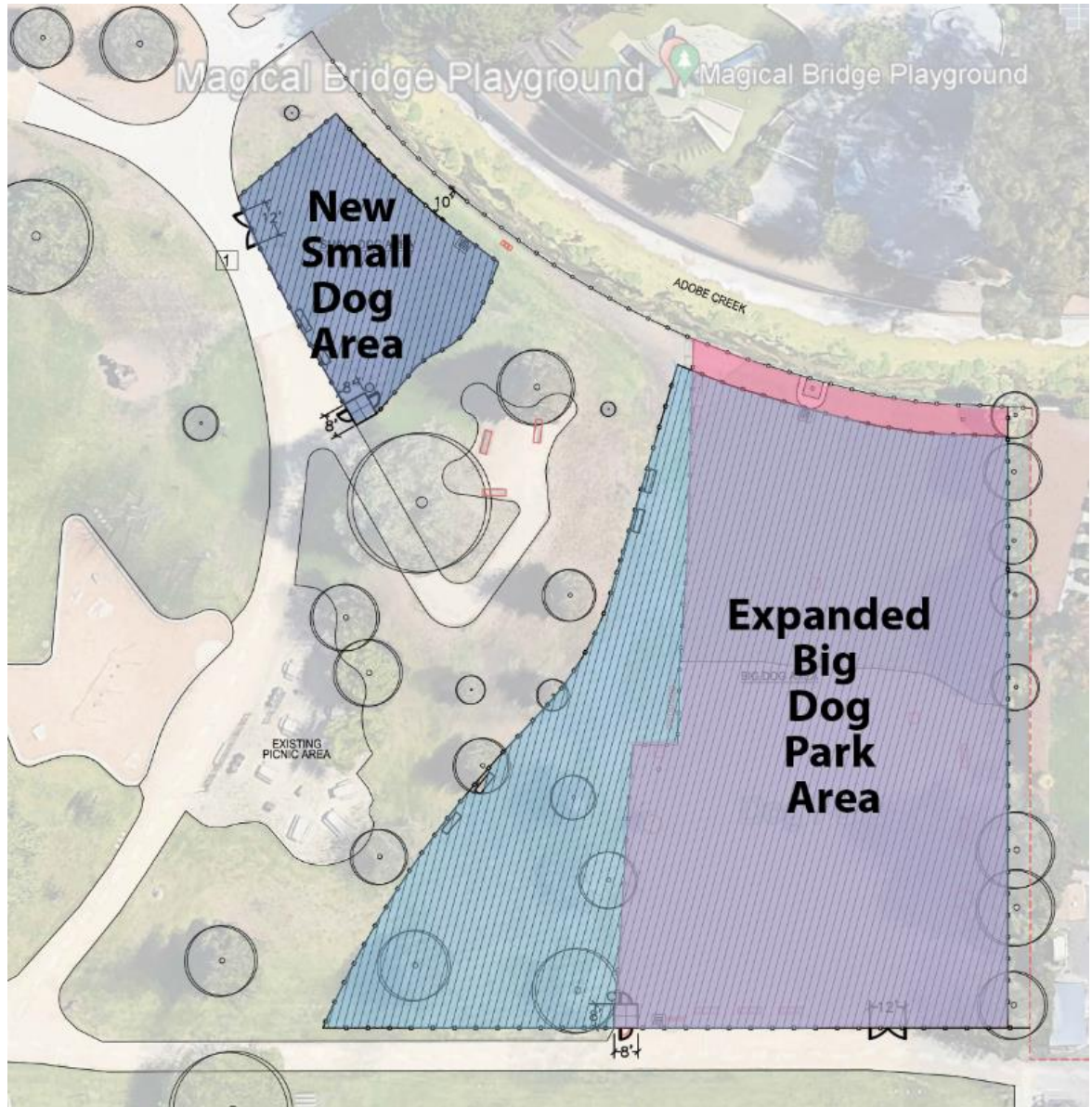
New Small Dog Park Size:
4,700 sq.ft. or .11 acre

Overall New Dog Park Size:
.90 acre (increase of .34 acres)



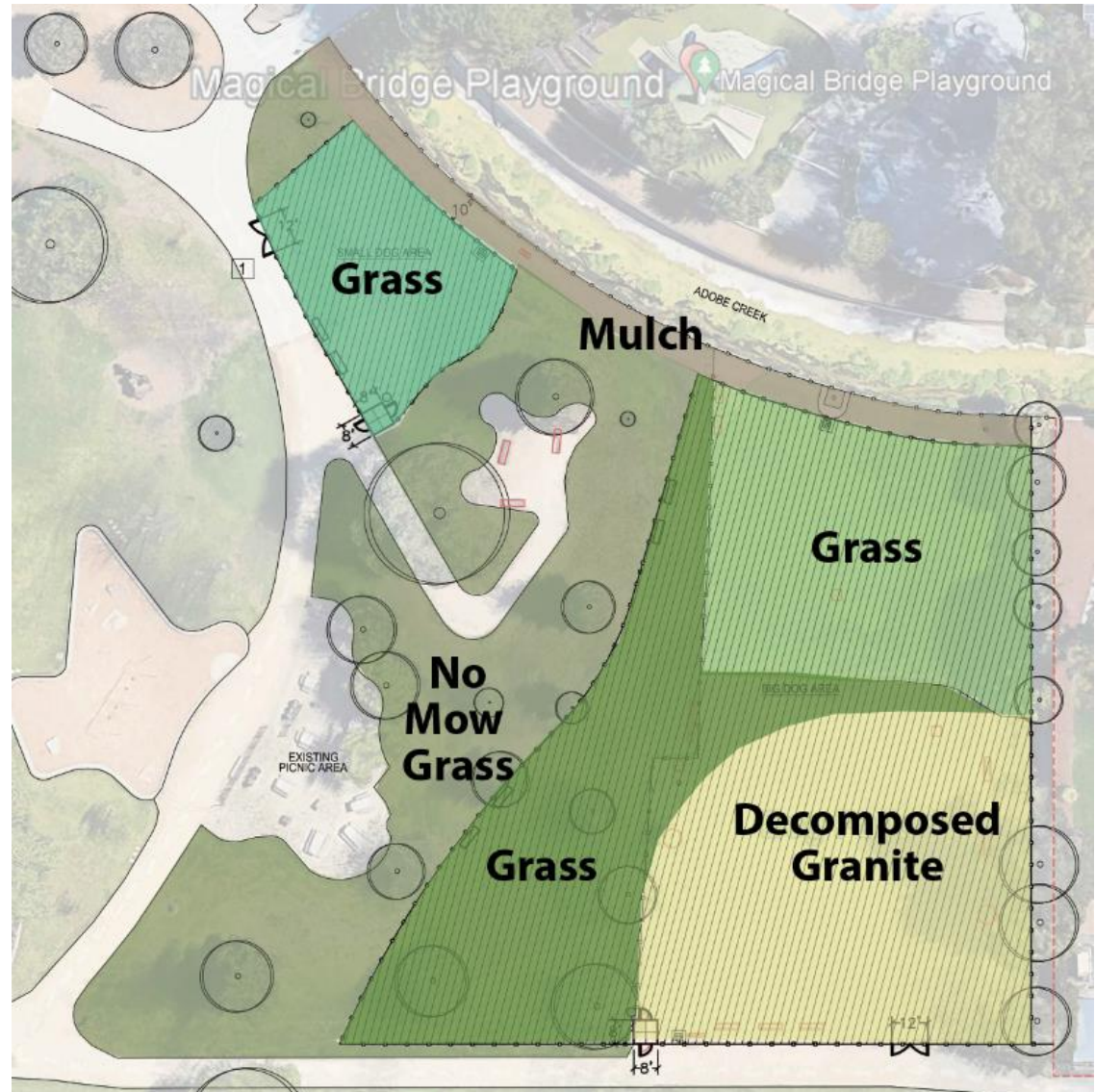
Proposed Plan

- Expand the size of the current dog park
- Create a separate small dog park
- Replace the existing fencing with 5' tall black vinyl clad chain link fencing
- Replace double gate entry with larger entry for service vehicles to use
- Add additional seating
 - (2) New Benches Big Dog
 - (3) New Benches Small Dog
- Relocate (2) hose bibs in big dog park and provide one in small dog park area
- Reconfigure irrigation to maintain grass in expanded dog park area
- Move the dog park out of the 10' wide creek easement
- Keep the picnic area and hilltop separate from the dog park area
- Replace hilltop slope grass with a no mow variety to reduce maintenance



Proposed Dog Park Surfacing

- **Large Dog Park**
 - Existing area of dog park to remain as is with Decomposed granite and grass
 - New area will be maintained as grass
- **Small Dog Park**
 - Maintain existing turf
 - If turf fails replace with mulch



Project Schedule

- Community Outreach – On going
- Complete Bid Package Spring 2022
- Project Bidding Summer 2022
- Construction of Dog Park Fall 2022



Questions and Comments