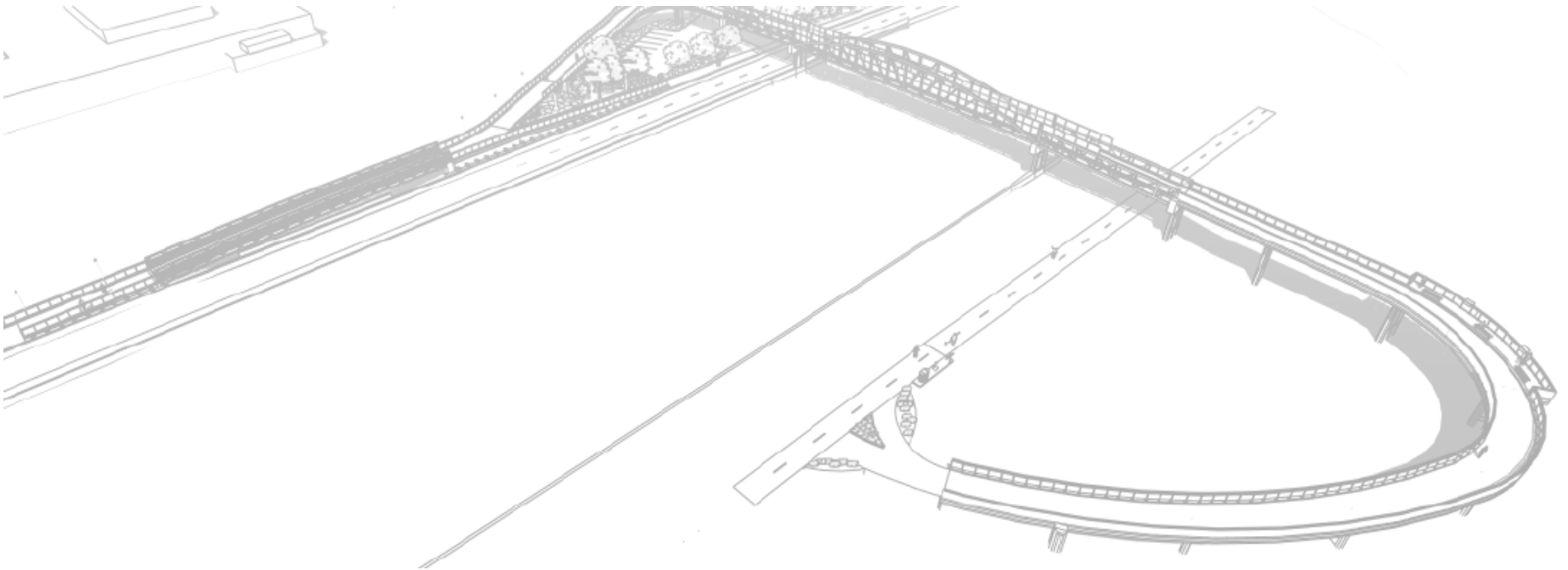


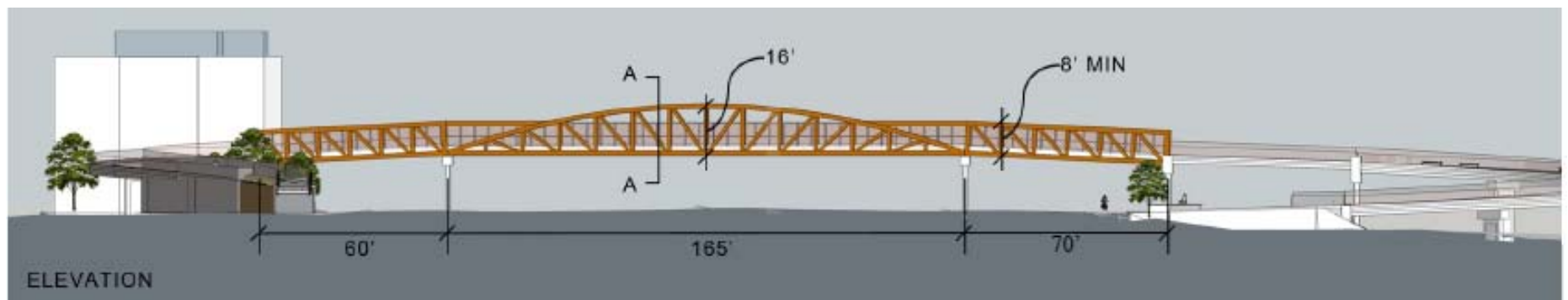
Highway 101 Bicycle/Pedestrian Overpass and Adobe Reach Trail

May 4, 2017



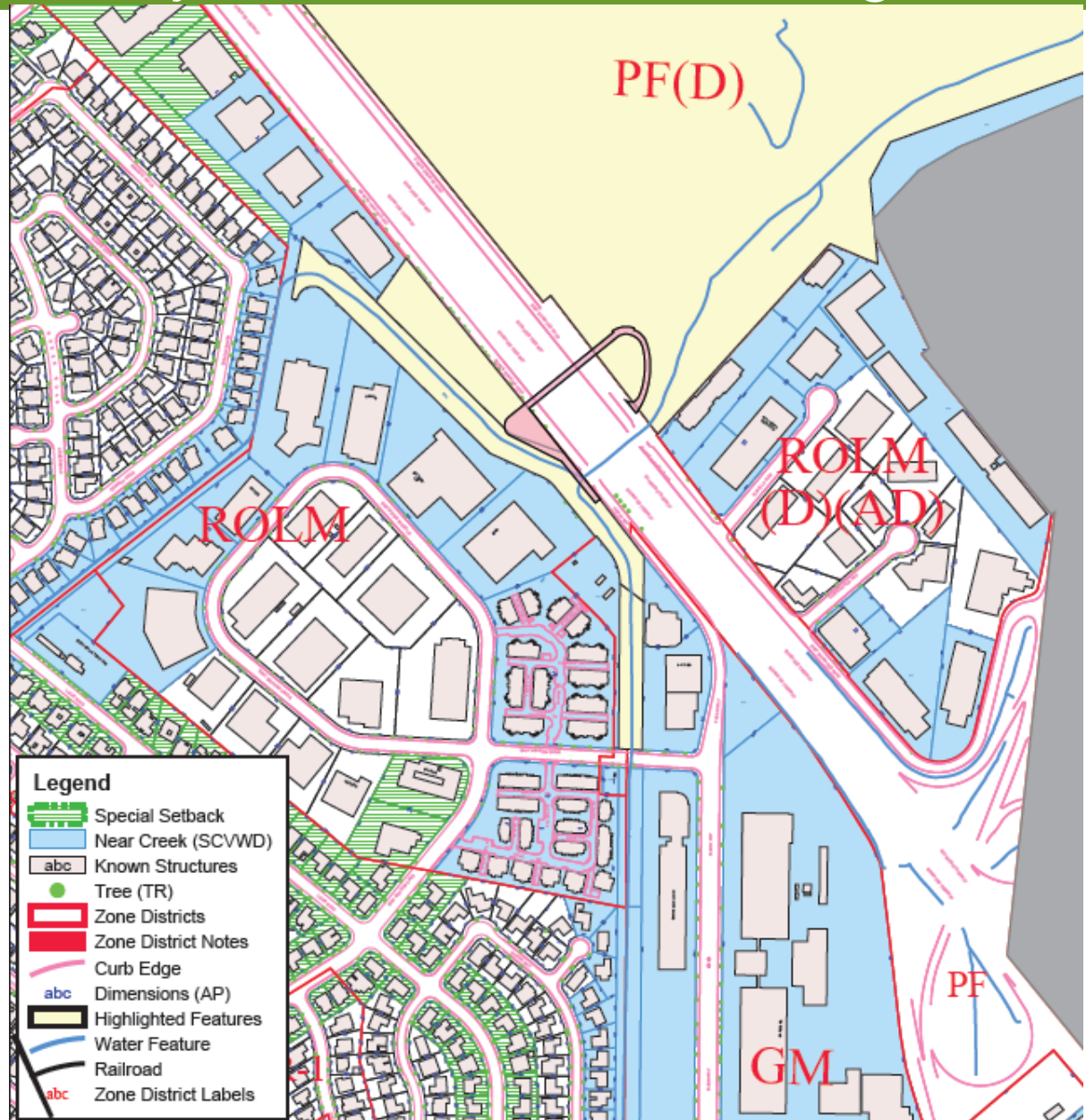
Project Overview: Location and Purpose

- Crosses Highway 101 between the East Oregon Expressway and San Antonio Road overcrossings
- Provides a year-round bicycle/pedestrian connection between commercial/residential uses west of Highway 101 and the walking/biking trails in the Baylands east of Highway 101
- Completes the Adobe Creek Reach Trail



Project Overview: Project Parcels With Zoning

- The project crosses four separate parcels within four distinct zoning districts
- The project site is zoned PF; PF(D); ROLM; and GM



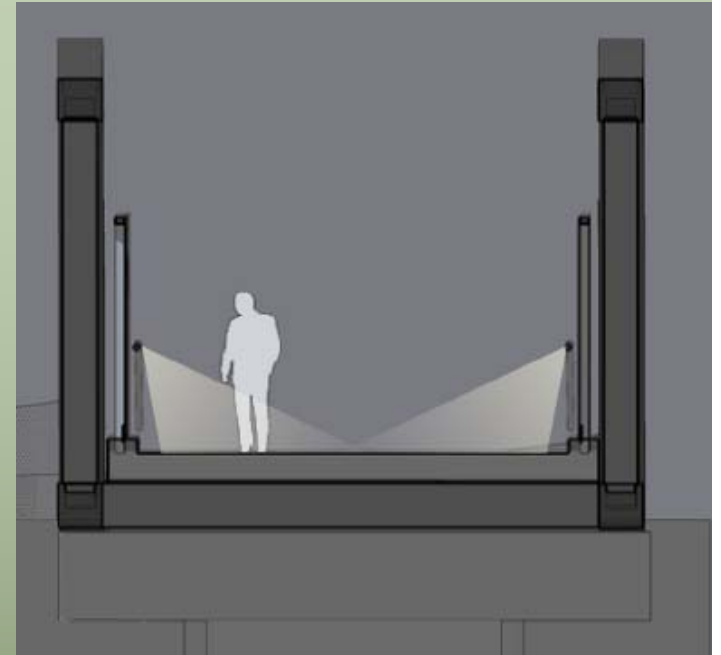
Process

- Through previous meetings/hearings Council has selected the alignment of the bridge, the type of structure, and budget
- The City's Public Works Engineering Division will apply for Site and Design review following this preliminary study session with the ARB and a study session with the PTC.



Requested Input from ARB

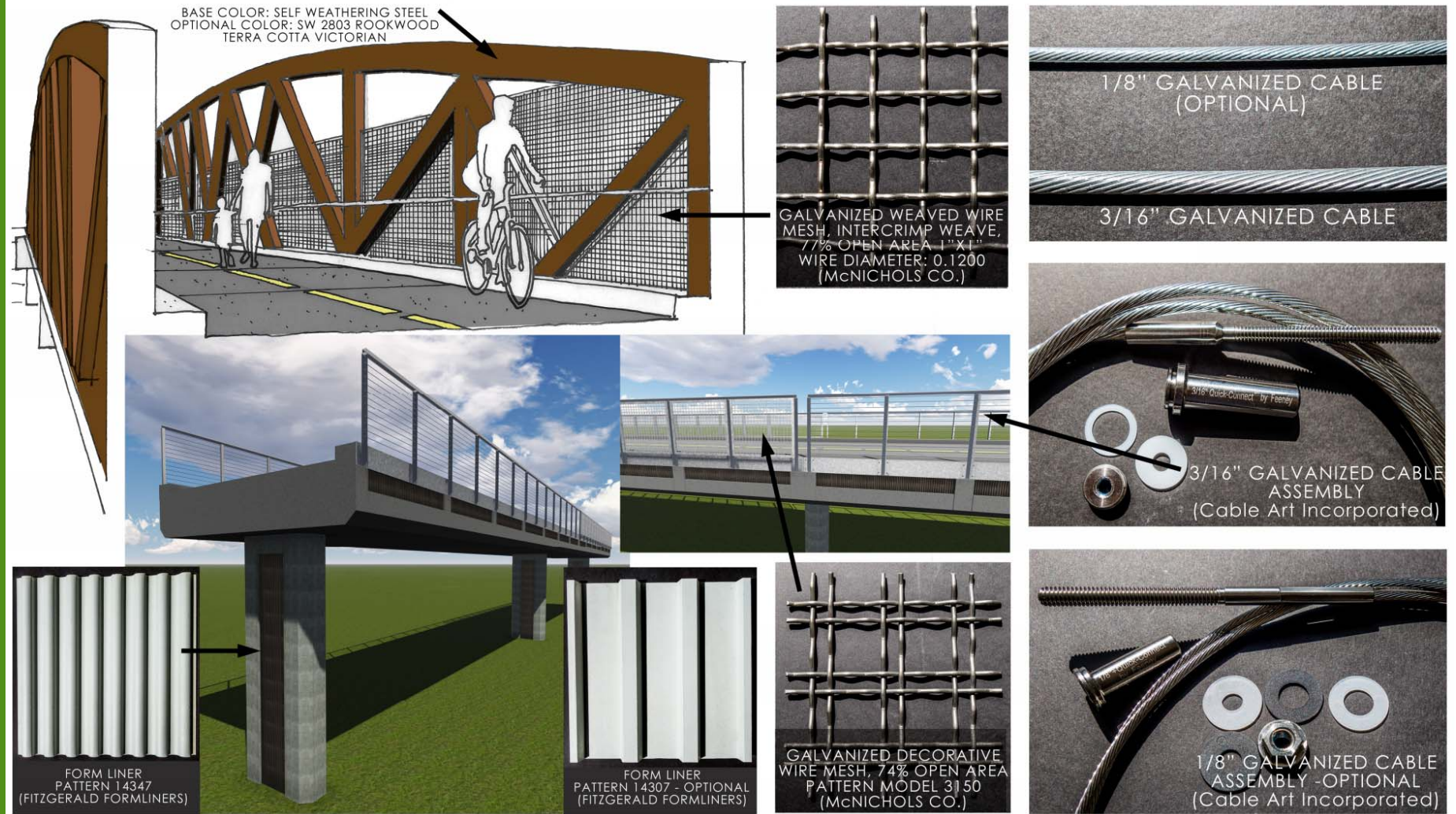
- Finish of the bridge (painted or self-weathering)
- Trail head refinements
- Addition/design of the overlook
- Landscaping
- Lighting
- Style and type of signage
- West approach ramp retaining wall finish
- Location of amenities



Base Architecture - Context



Base Architecture



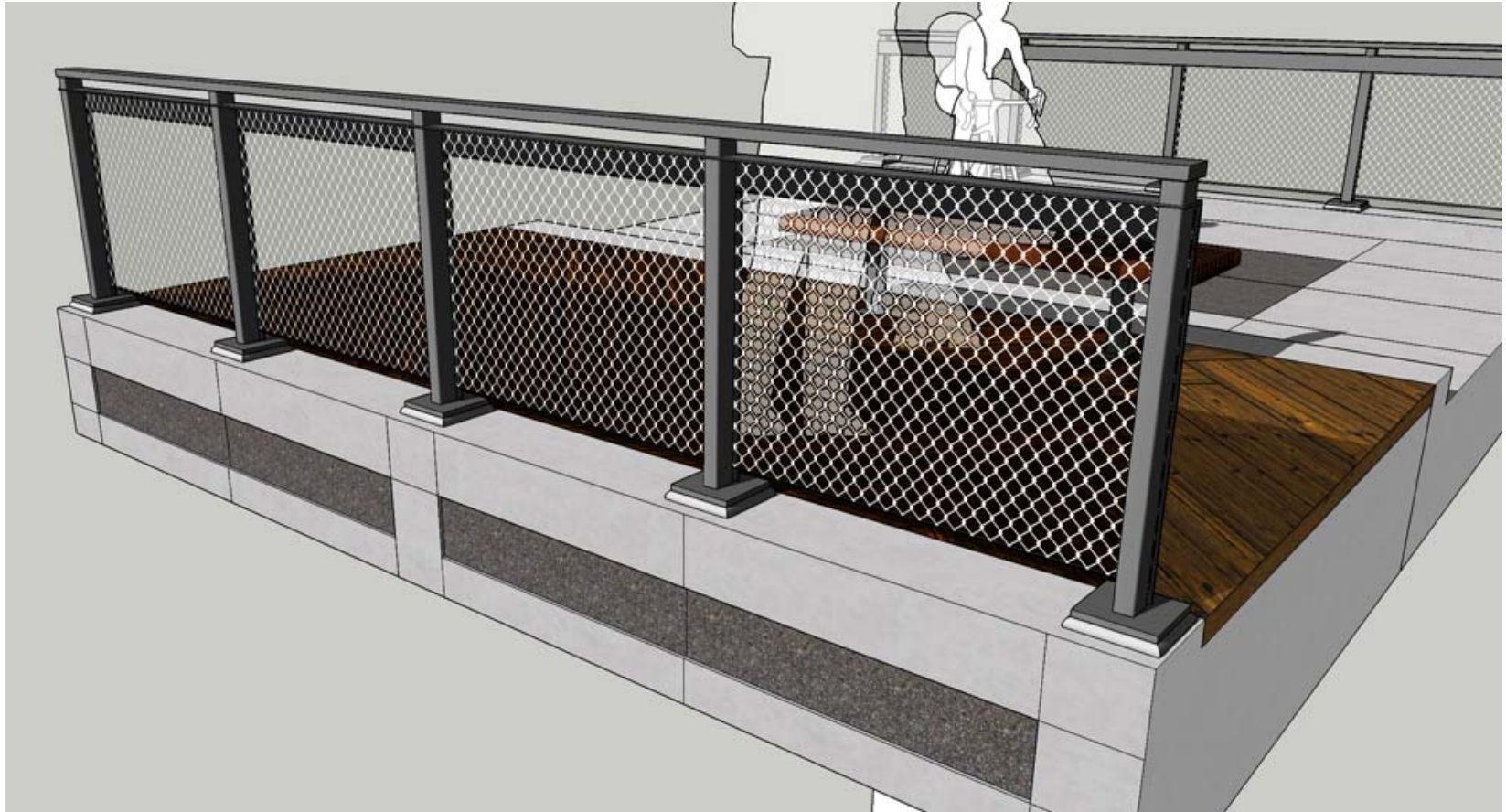
Base Architecture

Alternative Railing Materials



Base Architecture

Baseline Chain Link Railing



Eastern Approach Overlook

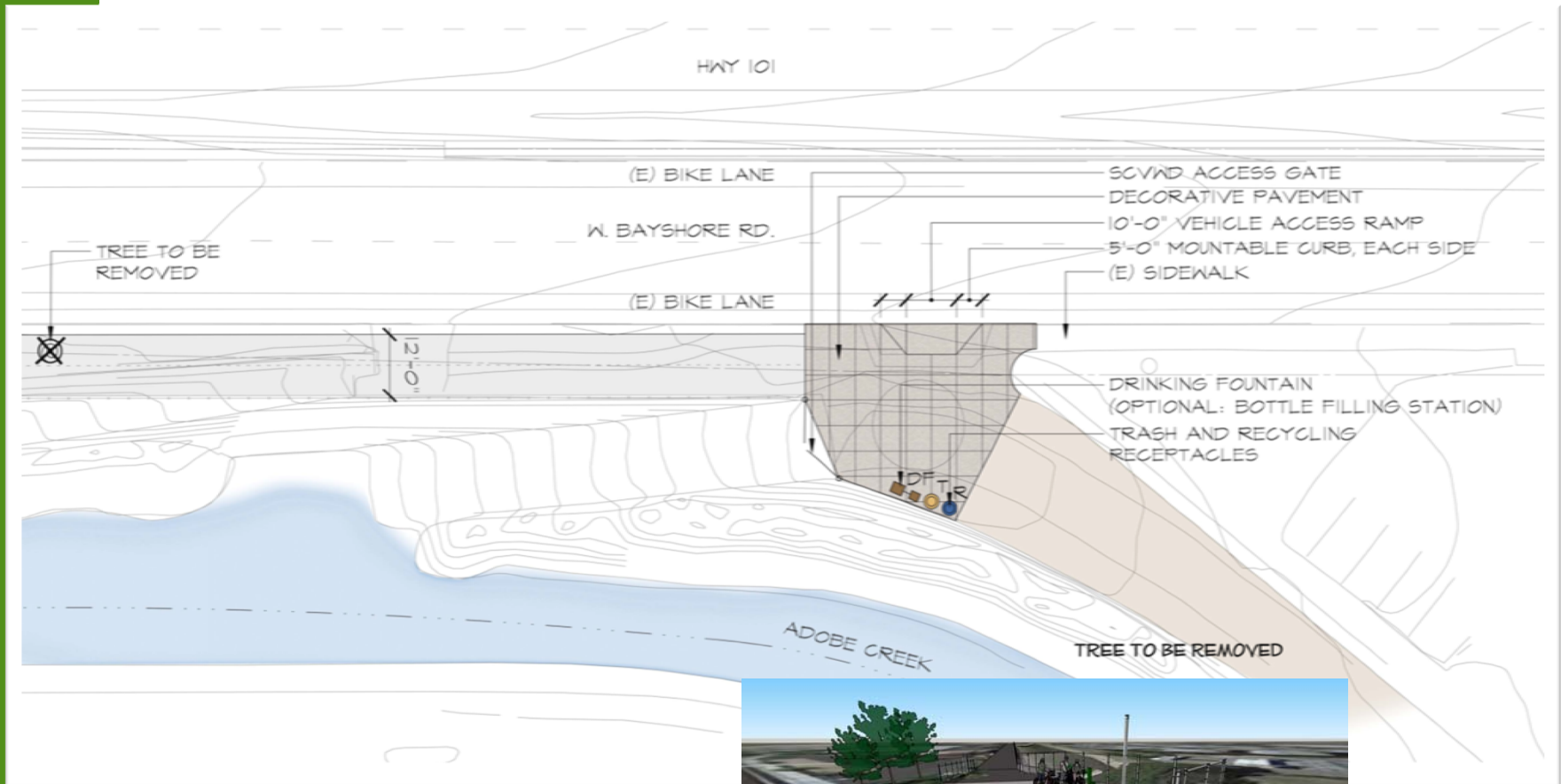


The site plan shows a proposed sidewalk and curb layout along Adobe Creek. The proposed sidewalk is 10' wide and is shown in a light gray color. The proposed curb is 10' wide and is shown in a dark gray color. The existing sidewalk is 10' wide and is shown in a light gray color. The existing curb is 10' wide and is shown in a dark gray color. The plan includes a north arrow and a scale bar.

- 
- CITY OF
PALO ALTO

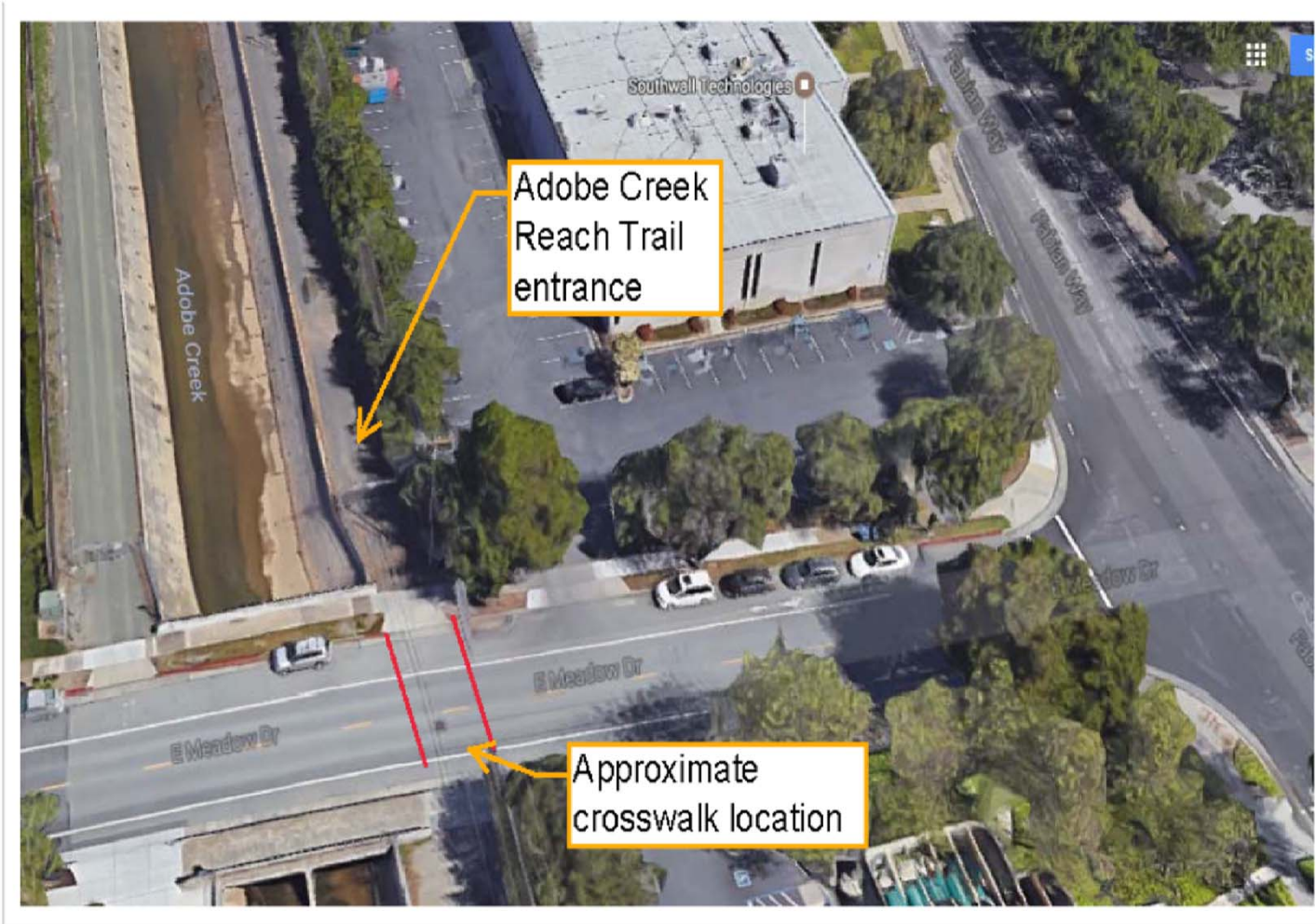
Connection Points / Trailheads

TRAILHEAD AT ADOBE CREEK REACH TRAIL – W Bayshore

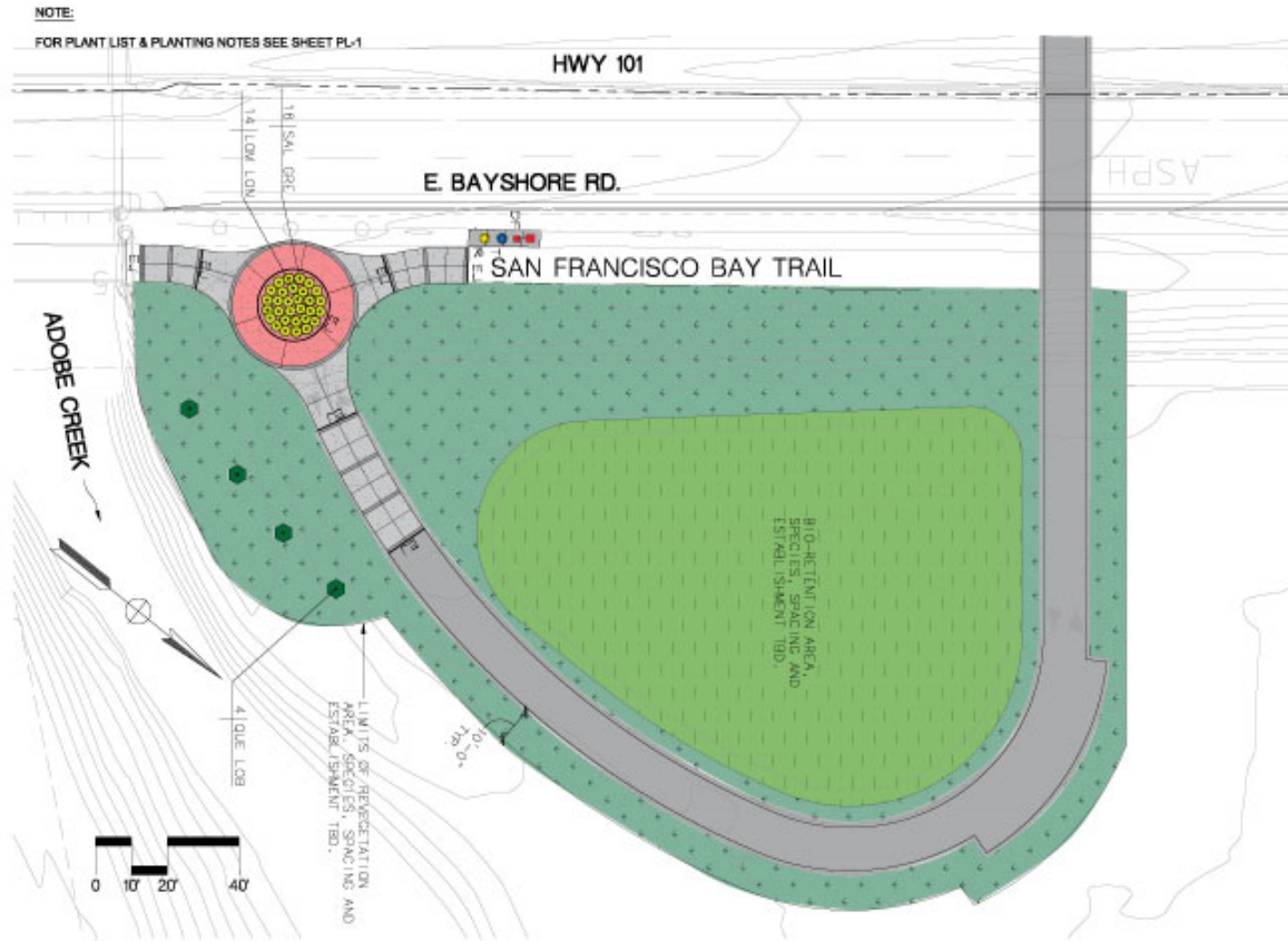


Connection Points / Trailheads

TRAILHEAD AT ADOBE CREEK REACH TRAIL – Meadow Dr



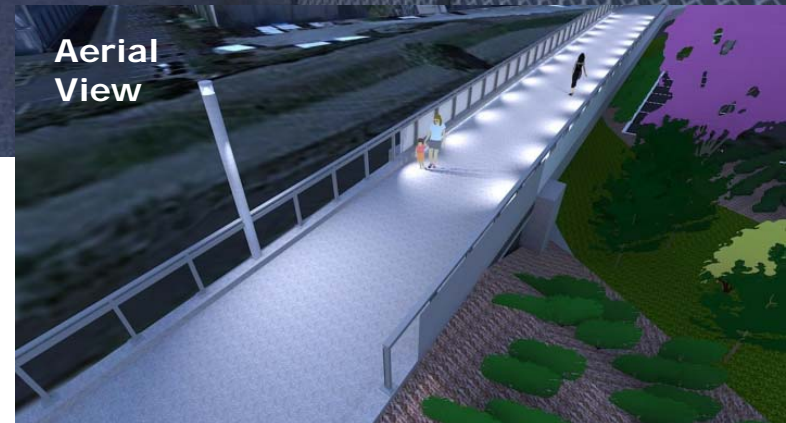
Bio-retention/Landscape Areas



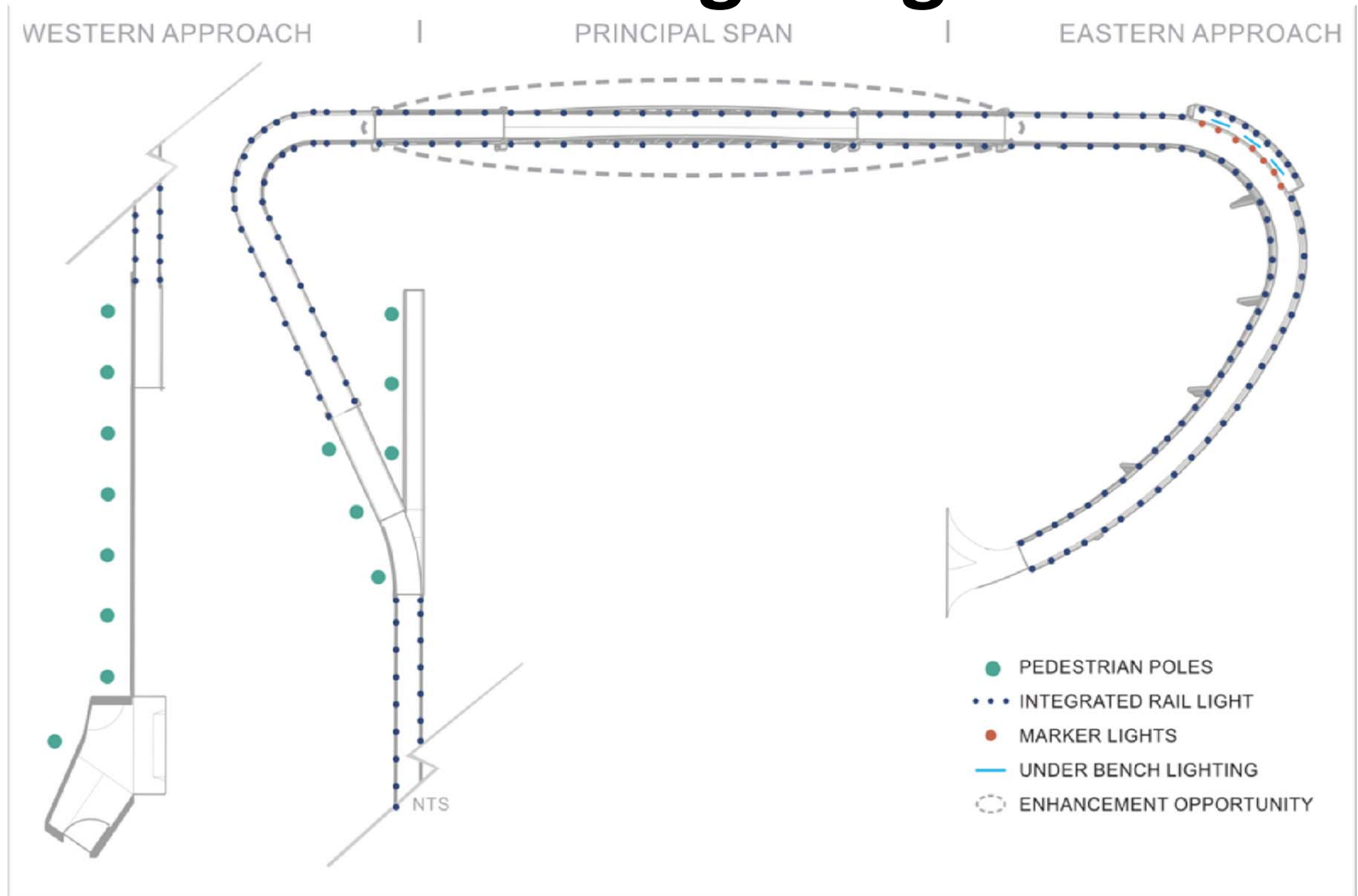
Landscape Areas



Path Lighting



Enhanced Lighting



Enhanced Amenities

Drinking
Fountain



Bike Racks



Trash Receptacle



Interpretive Signage



QUESTIONS