



# Alma Street/ Charleston Road Safety Improvements

Community Meeting #1  
October 28, 2025



# AGENDA

- — **Introductions**
- — **Purpose**
- — **Background**
- — **Preliminary Concept**
- — **Next Steps**
- — **Q & A**



# Purpose

- Addresses immediate safety concerns
- **Project Limits:** Alma Street/ Charleston Road intersection



# Background - Funding

---

## Funded by Section 130

- Project initiated by CPUC
- Federal program for the elimination of hazards at at-grade rail crossings
- Partnership between Caltrain, Caltrans, and City
- Adhere to CPUC requirements and guidelines
- Limited to specific scope of work



# Background - Railroad Crossing Constraints

---

- Caltrans Section 130 Funding Scope
- Multiple Stakeholders
  - Caltrans
  - Caltrain
  - California Public Utilities Commission (CPUC)
- Design Considerations
  - Right-of-Way (no property impacts)
  - Existing Utilities
  - Visibility
  - Sidewalk grades and elevation

# Background – Other Project in the Vicinity

## Railroad Grade Separation Project

- Major long term infrastructure project
- Alternatives are being refined to 15% design
- Rail Committee review scheduled for November 18, 2025
- Final Design is expected to begin in 2028/2029



Hybrid Concept

Project Website: [www.paloalto.gov/gradeseparation](http://www.paloalto.gov/gradeseparation)



# Background – Other Project in the Vicinity

## Railroad Grade Separation Project



Underpass & Direct Access Ramp Alternative

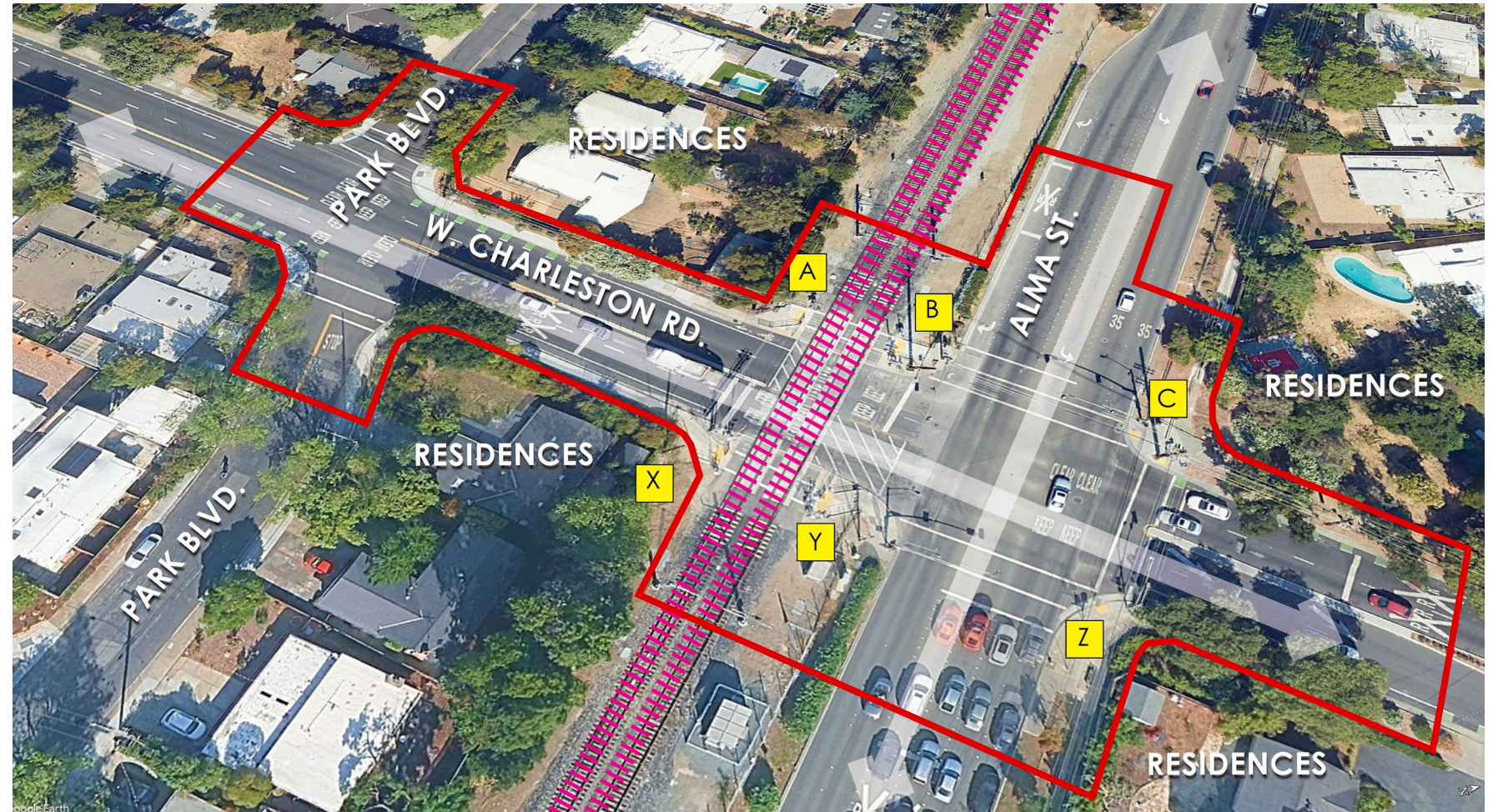


Underpass and Roundabout Alternative



## LEGEND

- PROJECT LIMITS
- A CURB RAMPS
- CALTRAIN TRACKS



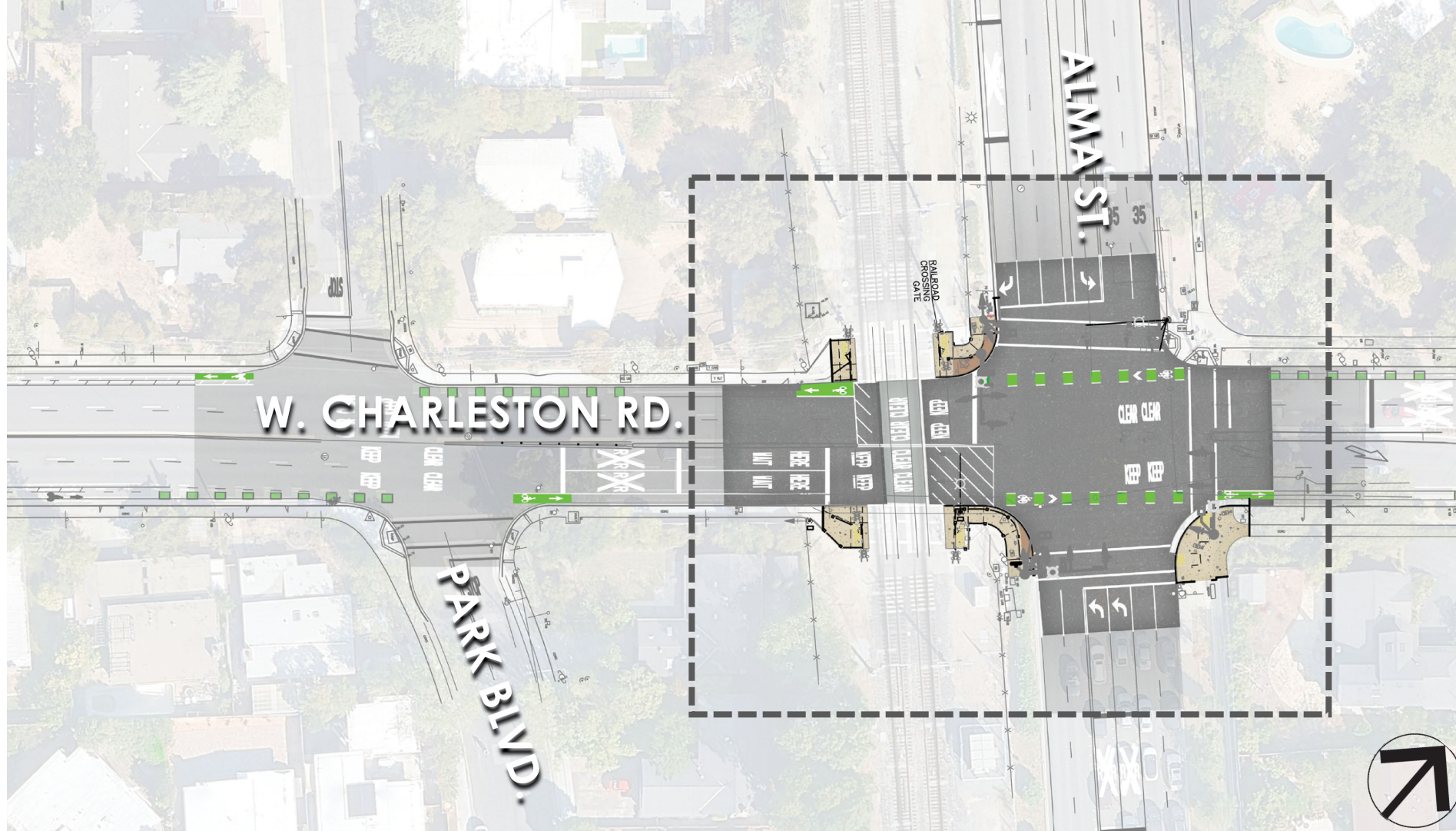




# Preliminary Concept

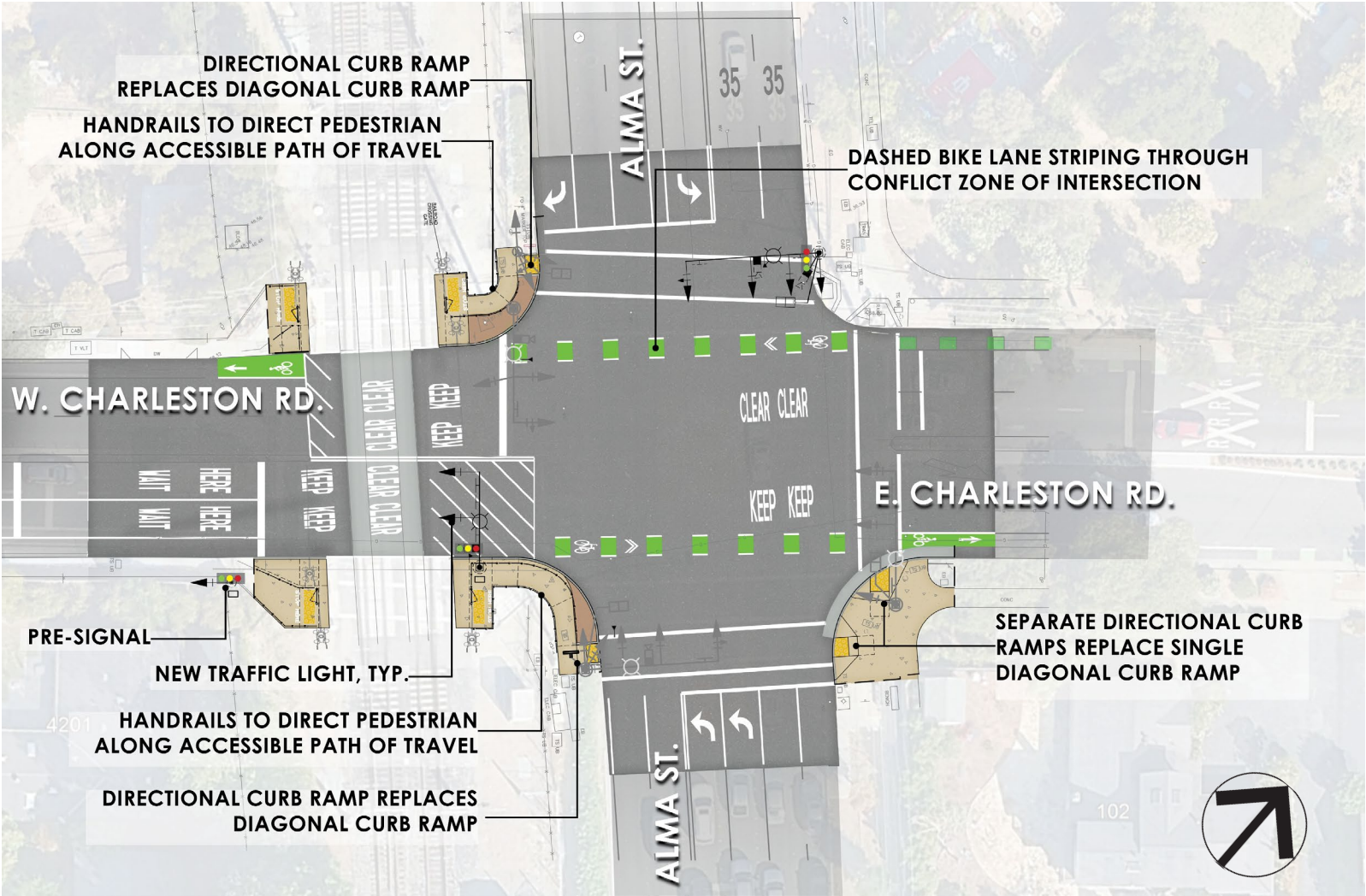
---

# Proposed Improvements





# Alma Street/ Charleston Road Intersection





# Alma St/ Charleston Rd Intersection – Directional Curb Ramps





# Alma St/ Charleston Rd Intersection – Handrails



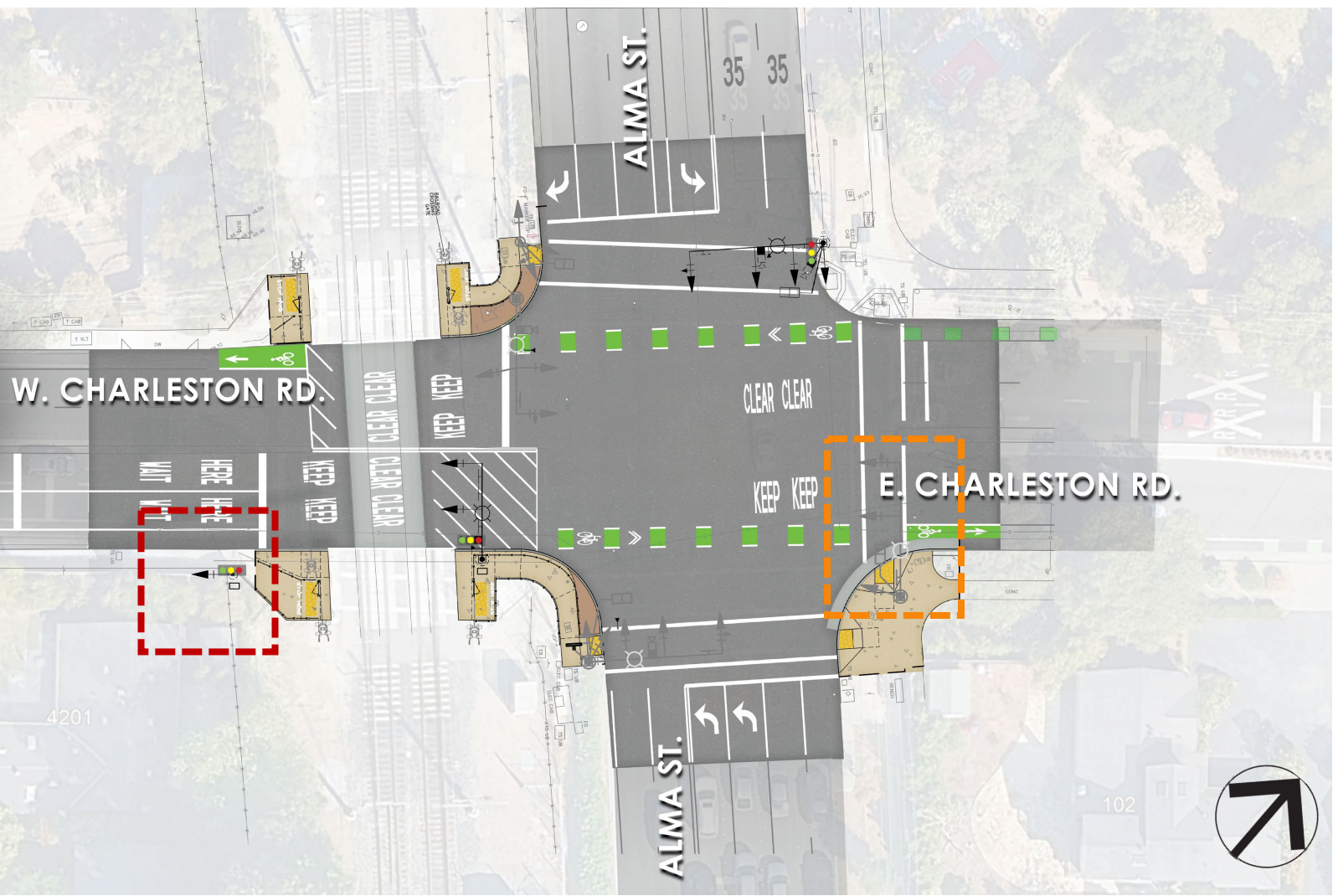


# Alma St/ Charleston Rd Intersection – Bike Lane Improvements





# Alma St/ Charleston Rd Intersection – Pre-Signal





# What is a pre-signal?

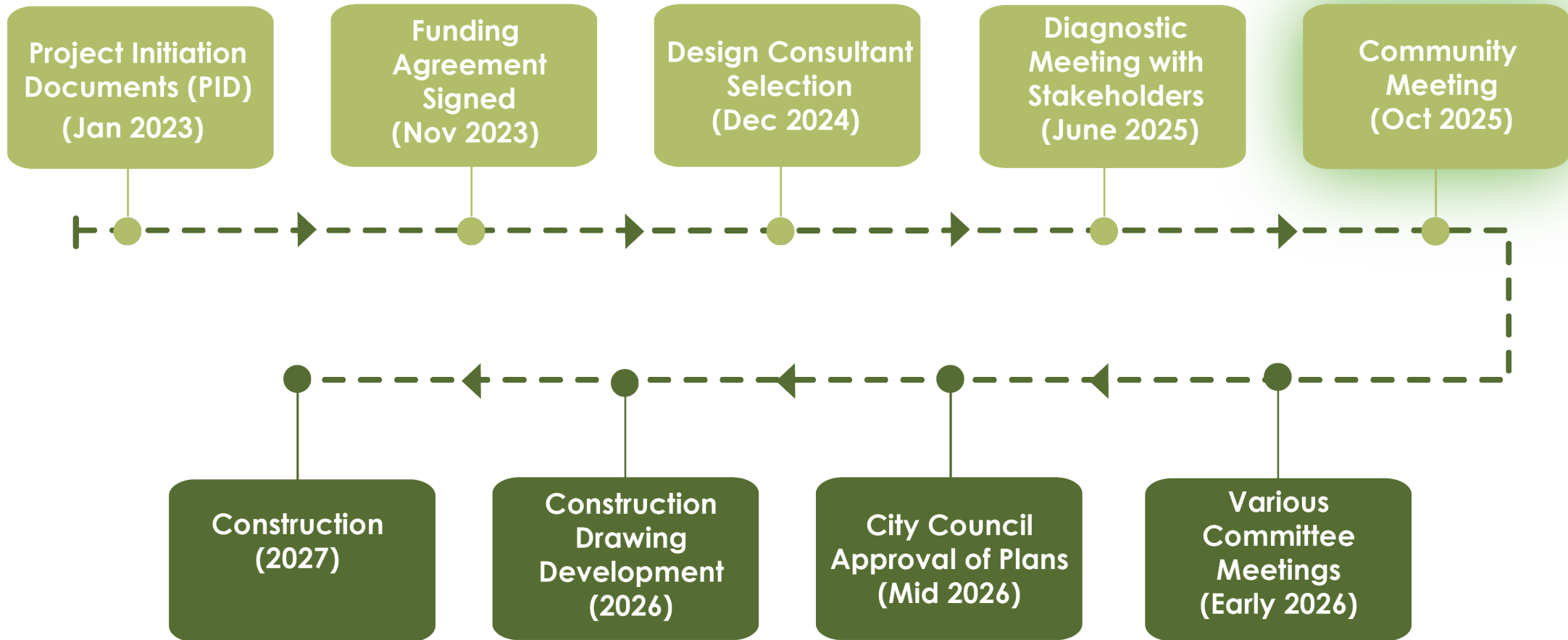
- Installed before the railroad tracks (EB Charleston)
- Improves safety by preventing vehicles from being stranded on the tracks
- Coordinated with the signal to ensure tracks are cleared



Recently installed pre-signal at Alma St. /Churchill Ave.



# Next Steps







CITY OF  
**PALO  
ALTO**

## **CITY OF PALO ALTO**

Ruchika Aggarwal  
[ruchika.aggarwal@paloalto.gov](mailto:ruchika.aggarwal@paloalto.gov)

Rafael Rius  
[rafael.rius@paloalto.gov](mailto:rafael.rius@paloalto.gov)  
**[PaloAlto.gov/AlmaCharleston](https://PaloAlto.gov/AlmaCharleston)**