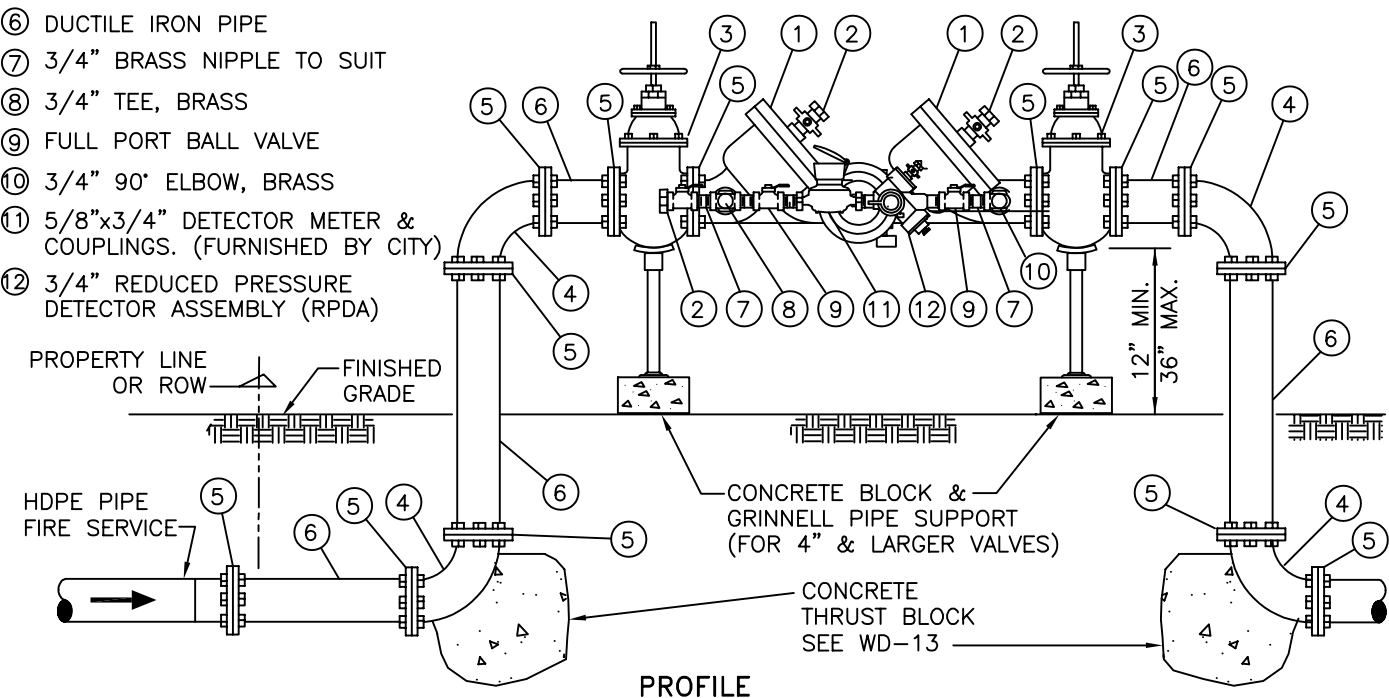


- ① REDUCED PRESSURE DETECTOR ASSEMBLY (RPDA) OR DOUBLE CHECK DETECTOR ASSEMBLY (DCDA)
- ② TEST COCK W/CAP, 4 REQD
- ③ INDICATING VALVE WITH RISING STEM OR INDICATOR FLAG
- ④ 90° BEND, FL
- ⑤ FLANGE
- ⑥ DUCTILE IRON PIPE
- ⑦ 3/4" BRASS NIPPLE TO SUIT
- ⑧ 3/4" TEE, BRASS
- ⑨ FULL PORT BALL VALVE
- ⑩ 3/4" 90° ELBOW, BRASS
- ⑪ 5/8"x3/4" DETECTOR METER & COUPLINGS. (FURNISHED BY CITY)
- ⑫ 3/4" REDUCED PRESSURE DETECTOR ASSEMBLY (RPDA)



NOTES:

1. BACKFLOW DEVICES AND PIPING SIZE SHALL BE THE SAME SIZE AS THE WATER SERVICE SUPPLY PIPE. IT'S THE OWNER RESPONSIBILITY TO PROPERLY SIZE THE WATER SYSTEM AS THESE DEVICES REDUCE THE INLET WATER PRESSURE TO THE BUILDING.
2. THE DEVICE SHOULD BE INSTALLED ON THE OWNER'S PROPERTY DIRECTLY BEHIND THE METER WITHIN 5' OF THE PROPERTY LINE, AND EASILY ACCESSIBLE TO FACILITATE ANNUAL TESTING AND MAINTENANCE.
3. ALL DEVICES AND COMPONENTS MUST BE CERTIFIED LEAD FREE IN COMPLIANCE WITH AB 1953 AND ON THE LIST APPROVED BY USCFCCHR.
4. NEW, UPGRADED OR RELOCATED DEVICES REQUIRE A BUILDING INSPECTION. ALL DEVICES MUST BE TESTED BY A CPAU-REGISTERED TESTER IMMEDIATELY AFTER INSTALLATION, RELOCATION, OR REPAIR AND PRIOR TO CONTINUOUS SERVICE. TEST REPORTS TO BE SENT TO backflow@PaloAlto.gov OR TO BE MAILED TO WGW UTILITIES OPERATIONS, CROSS SECTION CONTROL PROGRAM, 3201 E. BAYSHORE RD, PALO ALTO, CA94303.
5. ALL BURIED METALLIC PIPE AND JOINTS INCLUDING CORTEN BOLTS AND MEGALUGS SHALL BE ENCASED IN BLUE PE TUBING 8MIL THICK MIN WRAPPING.

BY	DATE	3" OR LARGER REDUCED PRESSURE DETECTOR ASSEMBLY (RPDA) OR DOUBLE CHECK DETECTOR ASSEMBLY (DCDA) FOR FIRE SERVICES AND SPRINKLERS STANDARD DETAIL	APPROVED:	SCALE:
DRAWN	J.J. 09/92		JULY 28, 2025	NONE
CHECKED	J.J. 02/20		<i>Nelson Schlater</i>	66547 R.E. NO.
REVIEWED	P.L. 07/25		NELSON SCHLATER ENGINEERING MANAGER	
		CITY OF PALO ALTO, CALIFORNIA	REVISION:	APPENDIX B
			JULY 28, 2025	
				DWG. NO. STD. WD-12A